

Ashland Tidings
 Established 1876
 Published Every Evening Except Sunday by
THE ASHLAND PRINTING CO.
 Bert R. Greer Editor
OFFICIAL CITY AND COUNTY PAPER.
 TELEPHONE 39

Subscription Rates Delivered in City
 One Month, Delivered.....\$ 5.00
 Six Months by mail..... 2.75
 Three months by mail..... 1.50
 No out of town subscriptions taken for less than three months.
By Mail Outside of United States
 One Year.....\$8.12
 Six Months..... 4.31
 No subscription for less than six months.

ADVERTISING RATES
 Display Advertising—
 Single insertion, each inch, 30c
YEARLY CONTRACTS
 Display Advertising—
 One time a week, each inch, each time..... 27 1/2c
 Two times a week, each inch, each time..... 25c
 Every other day, each inch, each time..... 20c
 Every issue, each inch, each time..... 17 1/2c

Local Readers
 Each line each time (6 words to line)..... 10c
 To run every other day for one month, each line each time..... 7c
 To run every issue for one month, or more, each line each time 5c
Classified Column
 One cent the word each time.
 To run every issue for one month, or more, 1/2c the word each time.
 Cards of Thanks, \$1.00.
 Obituaries, 2 1/2 cents the line.
Fraternal Orders and Societies
 Advertising for fraternal orders or societies charging a regular initiation fee and dues, no discount. Religious and benevolent orders will be charged for all advertising when an admission or other charge is made, at the regular rate.

The Tidings has a greater circulation in Ashland and its trade territory than all other newspapers combined.
 Entered at the Ashland, Oregon, Postoffice as Second Class Mail Matter.

THANKSGIVING

Are we thankful? Yes, in a thousand ways—
 For peaceful nights and wonderful days.
 We'll see but the good—we find that it pays.
 As the ugly cocoon has much beauty inside,
 So looks oft receive and much good may hide—
 In God's perfect love only right may abide.
 Then we'll count our blessings,—
 they are many and great,—
 Say we're sailing right on in the big ship of State—
 And we'll see much good we may emulate.
 We may have had trials and troubles galore,
 Give thanks to thy God that they were no more,
 And for the faith that whispers
 "they'll soon all be o'er."
 Yes, we're thankful, more than we can express,
 For bounteous good, each one to bless,—
 And prospective world peace brings thankfulness.
 —Elizabeth Yockey,
 Ashland, Ore., November, 1919.

Hotel Austin
 DAN CONNER, Proprietor.
 Headquarters for Commercial Men and Tourists.
 European Plan. Excellent Grill.
 Merchants' Lunch.
 Two Blocks from Lithia Park.

Thanksgiving Is Here!
 The day we ought to Celebrate.
 The best way of celebrating is to have something good to eat.
 You will find that in the Lithia Bakery.
 We carry a full line of pastry.
 Be sure and buy one of our Celebrated Fruit Cakes.
 P. S.—Put in your order early as they are going fast.
The Lithia Bakery
 R. C. JORGENSEN, Prop.
 150 E. Main.

The Social Realm

Thanksgiving Dance
 The Ashland Elks have issued invitations to their annual Thanksgiving ball which will be held in the hall Friday evening, November 28. This is one of the fine social events of every season and participants are looking forward to an especially charming affair this year.

Civic Club Elects Officers
 The annual meeting of the Civic club was held yesterday and the ladies who attended felt well repaid by the splendid lecture given by Mrs. M. K. Goldney. Mrs. Goldney has spent 33 years in the Argentina and she talked interestingly upon her experiences there and exhibited many curios from that country. The election of officers resulted in the election of Mrs. Otto Winter, vice-president; Mrs. Mary Willshire, secretary; and Mrs. C. B. Banta, treasurer. The election of president was held over until next meeting. The report of the treasurer and secretary was read and ordered published in the daily paper. Delicious refreshments were served and all went home delighted and confident that this was a very successful meeting.

FURS!

Ladies of Ashland
 We are now ready to do your fur repairing or sell you a new set of furs.
 F. W. BARTLETT,
 Taxidermist and Furrier,
 115 W. Main St. Medford, Oregon.

Star--Cut--Glass

Has Arrived
Come Quick While This Assortment Is Complete
H. P. HOLMES GROCERY

ASHLAND ELKS HOLD SESSION IN YREKA

Ashland Elks lodge No. 944 will upset a precedent in Elkdom by holding a regular meeting next Saturday evening in another state. Through a special dispensation of the grand lodge the Ashland lodge will hold its meeting in Yreka. Several hundred members of the local lodge reside in northern California, and it

Ashland Iron Works

(Incorporated)
 Office and Works No. 248 Helman St., Ashland, Ore.
Manufacturing Engineers, General Repair Work
 We manufacture Paving Plant Equipment, Sawmill, Mining and Ship Machinery, Steam and Gas Engines, Boilers and Heavy Steel Work; Grey Iron, Semi-Steel, Brass and Bronze Castings of every kind. Having thoroughly equipped our plant for the manufacture and repairs of heavy and all classes of machine and foundry work, we solicit your orders and inquiries. Estimates and quotations furnished on application.

PEIL'S

Corner by the Park.
CEDAR FENCE POSTS
 New and used sewing machines for sale or rent. A new Singer for half price. P. and O. famous Sticky Plows. Fencing in all styles. And don't forget Hiedes Tractor.

ORRES TAILORS FOR MEN AND WOMEN

Best Woolens; Latest Fashions Always.
 Satisfaction Guaranteed

New Auto Tops

The season is here when the auto top should be looked after. I make new ones or fix the old one. Let me look at it.

Ashland Furniture Hospital
 89 North Main

SPECIAL

Fresh Eastern Oysters
 Fresh Crabs
 Kipped Salmon
 Finnan Haddies

White House Grocery
 NININGER & ROBERTSON, Props.
 We close at 5:30 P. M., every day except Saturday.

No Cure for the "Flu"

Altho this dreaded Disease ravaged the Country last year yet a cure has really not been found for it, and Medical Authorities say another Epidemic will occur.
 We urge everybody, the minute you feel a cold coming on, have fever or chills, dull aches or constipation, to take a **THORO, CLEANSING, PURIFYING LAXATIVE.**
 Bathe your feet in hot salt water, take a good big cup of **HOLLISTER'S ROCKY MOUNTAIN TEA** (warm), and go to bed for the night—chances are you will feel fine the next morning and it won't be so easy for the "Flu" or Grippe to get you.
 Buy a package today, have it in the House and use it at the very first warning. Mothers should closely watch the children and treat them without delay.
POLEY'S DRUG STORE

is in compliment to these that the session will be held in the Siskiyou county seat. A big delegation is planning to go from here.

The fourteenth decennial census is to be taken during the month of January, 1920.

C. B. LAMKIN

Bargains in **REAL ESTATE**
 City and Ranch Properties, Houses to Rent.
 Citizens' Bank Building.

HEMSTITCHING and PICOTING

Mrs. Hevner and Miss Ewan, balcony floor, Vaupel's Store.

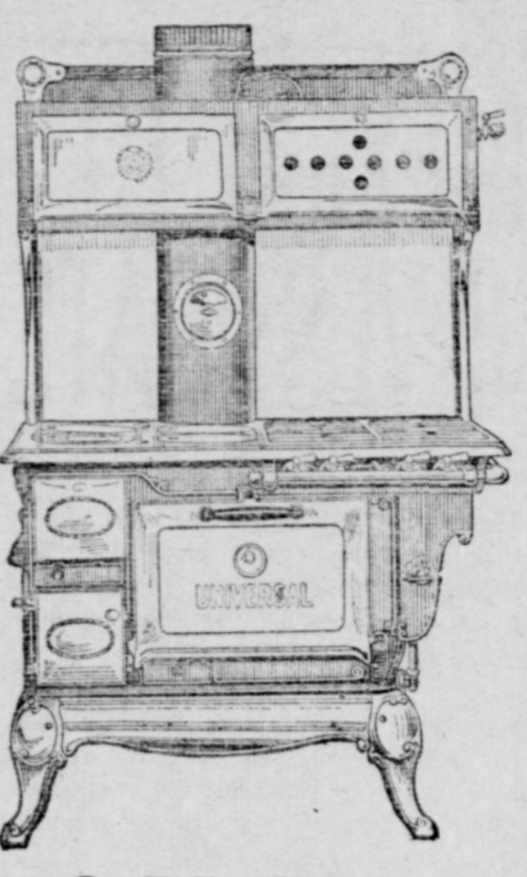
SEND us your family washing and we will give you ideal service and freedom from wash-day drudgery.

Ashland Laundry Co.
 Phone 165
 F. E. FRENCH & SON, Props.

Coal and Wood Heaters Economical, Durable

Try a **Simplex Universal Combination Range**

You can use it for gas in the summer and when the weather gets cold use wood or coal for fuel all in the same stove. There are no parts to change in turning from one fuel to the other. It is simple enough for a child.



Three Ranges in One and but One to Buy

A twist of the key in one direction elevates the gas burner flush with the bottom of the oven, opens the exit in the top, turns on the gas—all automatically. A turn of the key in the opposite direction and the gas is turned off, the burner lowered, the exit closed and the range ready for coal or wood.

Come in and take a look at the Best Combination range on earth. We will take pleasure in showing you.

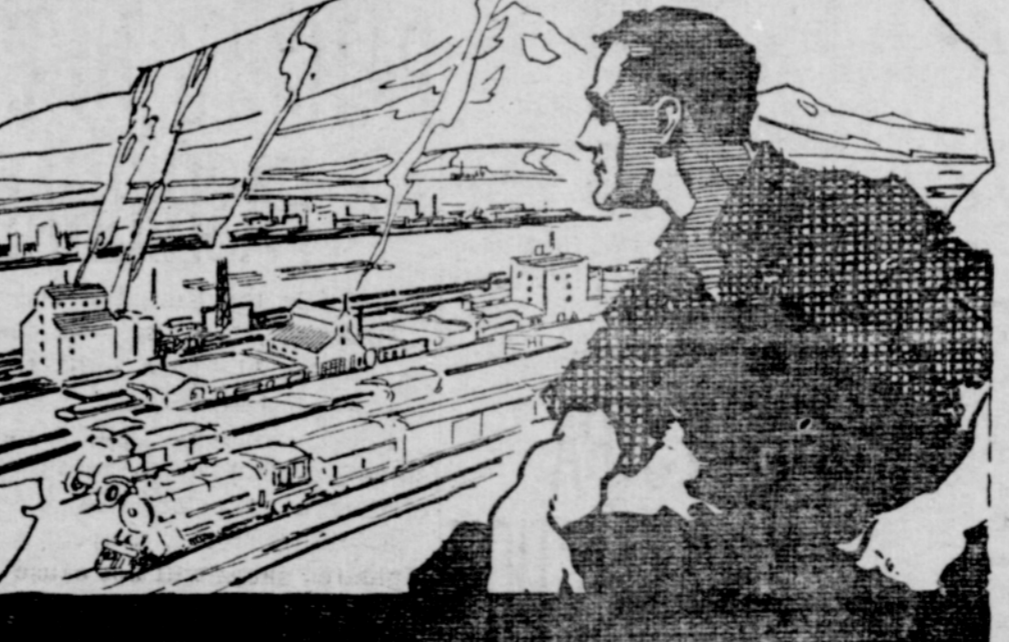
Swenson & McRae
 Economical House Furnishers

We have on hand a quantity of

CEDAR POSTS

4x5--7 ft.
 at the Same Old Price
CARSON-FOWLER LUMBER CO.
 IN THE HEART OF TOWN

Oregon Has Great Natural Resources



APPROXIMATELY one-third of all the water power in the United States is within the Columbia River Basin. The water power resources of Oregon are roughly estimated to be 3,500,000 horsepower. This is a great asset. It means that Oregon will eventually become a great manufacturing center. Nature has done much. But you must do your bit. Encourage the rapid growth of Oregon industries by purchasing Oregon products.
Associated Industries of Oregon



TOPIITE
 The Dependable Top Dressing for Automobiles
 COMPOUNDED & GUARANTEED BY THE WOODTITE LABORATORIES, MODESTO, CALIFORNIA

STRIKE VS. MERIT
 Trained workers GET MORE because they're WORTH MORE by the 100 PER CENT AMERICAN STANDARD. Strike demands often fail, while INDIVIDUAL MERIT ALWAYS WINS.
I CAN plus I WILL equals OPPORTUNITY
Medford Business College
 INDIVIDUAL INSTRUCTION DAY OR EVENING LEARN MORE EARN MORE
 Special Rates on Incurban—Two Free Scholarships.

The Hit of the Season in San Francisco and Los Angeles
The American Syncopated Orchestra
 Will Appear at the **ASHLAND ARMORY**
Friday Evening Dec. 5

The American Syncopated Orchestra is a company of Thirty Negro Musicians, probably the first organization of this character in the world—All Singers—Banjo Players—String and Wood Instruments
WONDERFUL UNIQUE UNEXCELLED

Popular Prices



UTZ & DUNN'S
 "STYLE SHOES OF QUALITY"

New Boots of Grace and Individuality

With the war only a memory footwear for milady again reflects the skill of the boot-maker's art.

Tops are once more tall and graceful and materials are in a pleasing variety.

Difficult to find a worthy parallel to our Utz & Dunn "Style Shoes of Quality."

You'll find a welcome and a visit will pay you well.



No. 90274.
 Filbert Brown Kids \$12.00

C. H. VAUPEL
 Quality Store
 68-72 E. Main St., Ashland.

Simpsons' Hardware
Ashland, Oregon
 The Home of Dependable Tools, Cutlery, Kitchen ware Stoves and Ranges
 One quart fruit cans 90c Two quart fruit cans \$1.25