

The Boardman Mirror
Boardman, Oregon

PUBLISHED EVERY FRIDAY

Mrs. Claire P. Harter, Local Editor

MARK A. CLEVELAND, Publisher

\$2.00 PER YEAR IN ADVANCE

Entered as second-class matter Feb. 11, 1921, at the post office at Boardman, Ore., under act of Mar. 3, 1879.

1921	JULY							1921
Sun	Mon	Tue	Wed	Thu	Fri	Sat		
						1	2	
3	4	5	6	7	8	9		
10	11	12	13	14	15	16		
17	18	19	20	21	22	23		
24	25	26	27	28	29	30		

ON HOME TRADING

John S. McMillan of Seattle, president of the Tacoma and Roche Harbor Lime company, has the following boost for trading at home printed on the back of his business card:

I remember that upon one occasion a certain Farmers' Union lecturer was telling the farmers of Texas of the mistake they were making. He said: "The great mistake with the Texas farmer is that he doesn't live at home; he depends on selling cotton too much. You are continually buying something, and you don't ever sell anything." To illustrate what I mean, I need but call your attention to the fact that when you awake in the morning, it is to the alarm of a Connecticut clock. You get up and button on Chicago suspenders to your Detroit overalls. You go out and wash your face with Cincinnati soap in an Indianapolis washbasin. You sit down to your breakfast and eat from a table made in Grand Rapids, Michigan, and you eat Chicago meat. And your bread is made of Tennessee flour, cooked on a St. Louis stove. You go out and put a New York bridle on a Kentucky mule, fed on Iowa corn, and plow your farm all day, which is covered with a Massachusetts mortgage. And at night when you get home, you read a Bible printed in Boston, and you say a prayer that was written in Jerusalem. And you crawl under a blanket manufactured in New Jersey, to be kept awake all night by a damned dog—the only home product you have on the farm."

FARM LOANS AND THE BANKS

The federal farm loan banks have again been in operation for about two months, and in some states considerable money is being put out.

In the Spokane farm loan bank applications have been piled up for over seven millions of loans, and a few small state farm loans are made.

To get federal farm loans farmers must take stock in the farm loan bank and the expense of making the investigation falls on the applicant.

These loans were originally made on low rate bond issues but the rate of interest on government bonds has gone to practically six per cent.

So the state and federal farm loans are not going to give relief to the farmers at any lower rate of interest than private farm loan banks make.

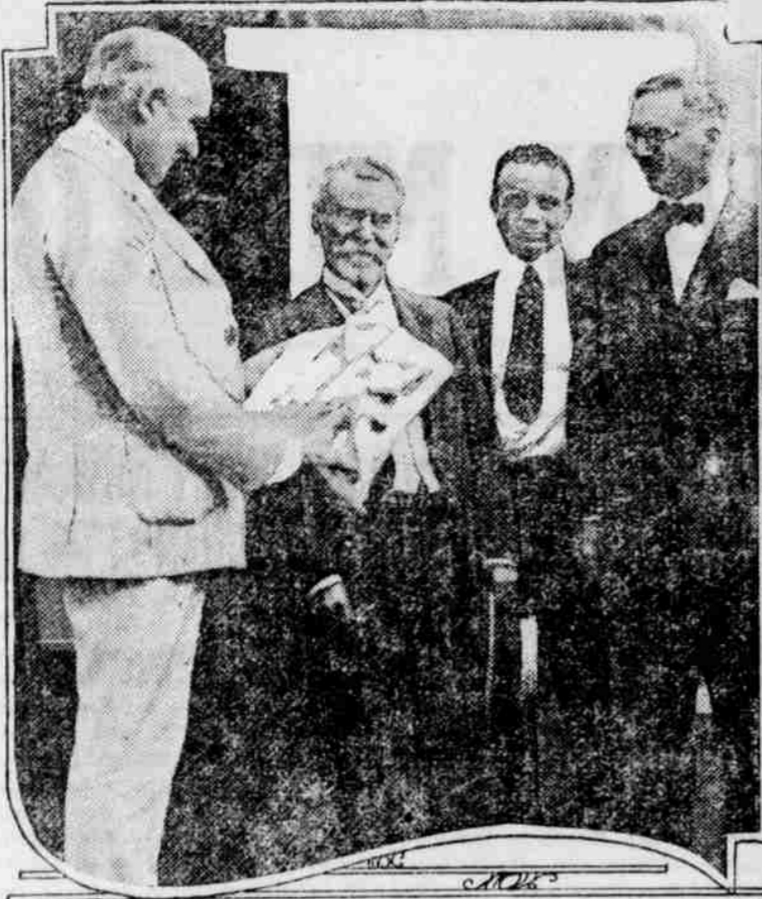
The competition between the two systems will eventually benefit the farmers as the inequitable difference in interest rates has been wiped out.

As imports of gold increase money is becoming cheaper and good farm loans will probably be made for some time at lower rates of interest.

LUMBER LEADS IN DROP

Further reductions in building costs have been recorded in the last 30 days, according to builders and contractors in various sections of the

AMERICAN LEGION GOING BACK TO FRANCE



The American Legion is sending a pilgrimage back to France. The delegation will sail from New York, Aug. 3. More than two hundred representatives of the various posts will make the trip, guests of the French nation, to be present at the unveiling of the Flirey Monument. With the new national commander, John G. Emery, present, Ambassador Jusserand presented the first replica of the monument to President Harding then extended an official invitation to the American Legion to be the guest of the French nation at the unveiling. In the picture, left to right, are: President Harding, Ambassador Jusserand, Ass't Sec'y of Navy Theo. Roosevelt and Commander John G. Emery.

west. Lumber, which has made the biggest slump of all building materials, is now selling in the Northwest at prices representing approximately a 50 per cent reduction over 1920 prices. Labor costs have likewise been materially reduced.

Plumbing, plastering, brick and concrete work, excavating, paints and painting, heating and all other major items entering into the cost of home building show a decided drop ranging from 10 to 50 per cent, material men and builders say.

Real estate in many sections is lower than it has been for some years.

SOUND FINANCIAL POLICIES

For several years there will be large issues and large investments in bonds and securities on account of high taxes making other investments more or less undesirable.

Banking and sound business conditions generally demand that bond issues be at a fair rate of interest to reduce speculation and selling bonds at a large discount to a minimum.

Sound state policy should be along the line of inducing people in the state to become investors in home securities, and western states have well managed public utilities, that issue fine securities.

State, county and municipal bonds should be sold as largely as possible to the people in the district where they are issued, and this is being done in counties that issue market road bonds.

Altogether too many outside and even European securities are unloaded on the people, including worthless oil stock and other speculative securities, when people would do much better to buy home securities, from their home people.

TAXATION REFORM POSSIBLE

Predatory politicians tell the people that taxation must go higher and higher and that retrenchment and reduction of taxes is a dream.

The political machine that is usually bi-partisan in each state fights injection of business principles in public affairs.

The machine wants more public plunder, more offices, nepotism, extravagance and multiplication of the functions of government.

Governor Miller of New York won a great victory over the machine when he cut appropriations \$86,000,000 below the budget and abolished 3,000 state jobs.

Two western state treasurers are running their departments without increased salaries and making their offices earn more than they cost the people—in Oregon and California.

Taxation reform is possible on one basis—make all offices earn their own support from those who get the services rendered instead of taxing the general public.

THIRTY-SEVEN RED CROSS NURSES AT WORK IN PUEBLO

If Pueblo (Colo.) rebuilt ever erects a Hall of Fame to commemorate its salvation from flood, fire and pestilence, high on the roster of her benefactors will shine the names of thirty-seven Red Cross nurses.

On the sites of the improvised relief stations and hospitals scattered through this Colorado city bronze tablets may perhaps at some future

tion. The book, which contains 200 pages, is profusely illustrated with 50 reproductions of Round-Up photographs. It was recently reviewed by the New York Times.

NOTICE FOR PUBLICATION

DEPARTMENT OF THE INTERIOR
U. S. LAND OFFICE AT THE
DALLEES, ORE., July 1st, 1921.

NOTICE is hereby given that William Albert Price, of Boardman, Oregon, who, on August 2nd, 1916, made homestead entry, No. 016233, for W 1/2 SE 1/4 NW 1/4, W 1/2 NE 1/4 NW 1/4 (Unit B), section 20, township 4N, range 25E, Willamette Meridian, has filed notice of intention to make five year Proof, to establish claim to the land above described, before C. G. Blayden, U. S. Commissioner, at Boardman, Oregon, on the 12th day of August, 1921.

Claimant names as witnesses:
Sam Boardman, of Boardman, Ore.
W. N. Hatch, of Boardman, Ore.
Frank Partlow, of Boardman, Ore.
Paul Partlow, of Boardman, Ore.
H. FRANK WOODCOCK,
37-41 Register.

BULLETIN OF BOARDMAN COMMUNITY CHURCH SERVICE

Every Sunday
Sunday School 10:30 a. m.
Church Service 11:30 a. m.
Christian Endeavor 7:30 p. m.
Prayer Meeting, every Thursday at 8 p. m.
All are welcome.
J. W. HOOD, Pastor.

BIDS FOR TRANSPORTATION OF PUPILS

Bids will be received for transportation of pupils from Willows, Ore., to Boardman, Ore., at the office of the Clerk of District No. 39, up to and including August 20, 1921.

MARY LUNDELL,
Clerk of District No. 39.

LOCAL OPINION DEPARTMENT

Everyone is invited to contribute news and current opinions to the MIRROR. It is your paper, and is an organ through which our citizens, you and I, can express ourselves. Kindly hand or send them to the editor, written plainly, and only on one side of the paper.

INSTALLS X-RAY MACHINE

A new machine for securing X-ray pictures is being installed in the dental offices of Dr. R. B. Robbins of Pendleton. The machine is of the latest type of Victor manufacture.

Let us print your butter wrappers.

WOODSON & SWECK
ATTORNEYS-AT-LAW
Masonic Building
Heppner, Oregon.

ASSIST US IN SECURING MORE SUBSCRIBERS FOR THE BOARDMAN MIRROR. THE KIND ACT WILL BE APPRECIATED.

SAY SNOWFLAKE
WHEN YOU WANT BREAD.

There's no better bread on the market today than

Arlington Made Bread

Baked in the sanitary electric ovens of the

The Arlington Bakery
W. A. Eggmann, Prop.
ARLINGTON - OREGON

R. N. Stanfield, President
Ralph A. Holte, Cashier
Frank Sloan, 1st Vice-President
M. R. Ling, 2nd Vice-President

Bank of Stanfield
CAPITAL STOCK \$25,000.00
Four Per Cent Interest Paid on Time Certificates of Deposit.

DR. W. W. ILLSLEY
Osteopathic
PHYSICIAN AND SURGEON
Phone Res. 711 Office 551
Office over Bank Bldg., Horniston.
Calls answered at all hours.

DR. F. V. PRIME
DENTISTRY
HELMISTON, ORE.
Bank Building
Phones: Office 93. Residence 751.
Hours: 8 a. m. to 5 p. m.

Fresh Meat Delivered Every Wednesday
I will be in Boardman and on the Project every Wednesday with fresh meat. Watch for the Dodge delivery wagon, and when you hear the horn flag us. I have much territory to cover and can't tarry long, so watch for the Dodge on Wednesday.
J. L. CALKINS

The Only Restaurant in Pendleton Employing a full crew of white help.
THE FRENCH RESTAURANT
HOBBACH BROS., PROPS.
Elegant Furnished Rooms in Connection.

BOARDMAN:

The Hub of 33,000 fertile acres under U. S. Reclamation Service. The Gateway to the Great John Day with its 110,000 acres to be made abundantly productive by your governments unequalled engineering skill.

BOARDMAN:—A progressive town of progressive people in a wonderfully progressive community, where everybodys slogan is "DO IT," is situated 170 miles east of Portland, Ore., on the Columbia River, the Columbia Highway and the main line of the Union Pacific Transcontinental Railway.

Have you surveyed our community? If you dream of sunshine, flowers, fertile fields and a comfortable home, "DO IT."

BOARDMAN

Townsite Co.

E. P. DODD, Pres.

City Lots for Sale at Proper Prices

Boardman is a New Town But Not a Boom Town

Ideally located on railroad and Columbia river, far enough away from any large town to naturally become the trading center of a wonderful growing country.

Uncle Johns Ash

WHEN YOU SEE CONCENT, YOU SPOT WEAKNESS AT THE SAME TIME.