

BOARDMAN TRADING CO.

"West Extension Supply Store"

Our line is now complete for the Farmer. We have:

Groceries
Drygoods
Shoes
Hardware
Implements
Tires
Feed

When they ask where you got it, SAY
Boardman Trading Co.
"WEST EXTENSION SUPPLY STORE"

PEARLS

Symbolic of purity. Exemplified in the lily of Eastertide.

The most appropriate gift at this, the glad time of the year.

Sawtelle's, Inc.

Pendleton, *Jewelers* Oregon
The Largest Diamond Dealers in Eastern Oregon

Diamond Tires and Tubes

Mighty Easy Riding

Gas Oils Accessories

Expert Guaranteed Repair Work
At Reasonable Prices

Service Car Any
Time Any Where

If your Ford is sick We can cure it.
No cure, no pay

Boardman Garage

DAIRY FACTS

HIGH COST OF PRODUCTION

Illinois Experiment Station Secured Reliable Figures From 680 Dairy Farms.

There are various estimates on milk production costs and they are likely to be different under different circumstances. Moreover, there is considerable variation in milk quality, also, as it ranges from barely three per cent butterfat test to nearly five per cent. However, none of the figures available show that the producer of milk is "profiteering."

In Illinois the state experiment station secured accurate figures on milk production costs from 680 dairy farms with a total of 18,902 cows. Those figures showed the cost of all items entering into the production of 100 pounds of milk as follows:

Grain, 44 pounds at \$55 per ton	\$1.21
Silage, 188 pounds at \$3 per ton	.58
Hay, 50 pounds at \$30 per ton	.75
Other roughage, 39 pounds, at \$10 per ton	.19
Labor, 2½ hours at 30 cents per hour	.75

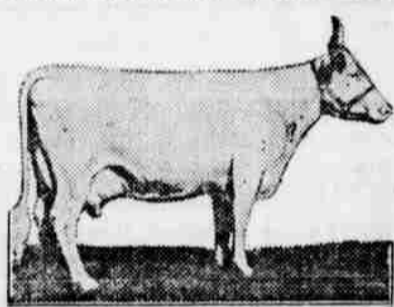
Total cost per 100 pounds...\$3.46
The cost is 3.46 cents per pound, or, taking 2.15 pounds per quart, 7.44 cents per quart.

EYE TEST FOR TUBERCULOSIS

Used as Check Upon Older Methods, as It Happens Occasionally Reactors Escape.

The eye test for detecting tuberculosis in cattle has the approval of the scientists of the bureau of animal industry, United States Department of Agriculture. The ophthalmic or eye test is used as a check upon the older methods, as it happens occasionally that an animal that will not react to the subcutaneous injection or intradermal test will react to the eye test.

Two tuberculin tablets are placed in the conjunctival sac beneath the lower lid of the left eye and observations are taken at approximately the third hour



Eye Test for Tuberculosis Has Its Best Use on Dairy Farm, Where Conditions Are Best Suited.

following and at frequent intervals up to 24 hours. Reaction to the test is indicated by discharge and swelling.

The bureau of animal industry is not prepared to accept the evidence of the eye test alone where cattle are intended for interstate shipment. The test, however, furnishes an additional safeguard when used with the older method.

The eye test is not well adapted for use upon range cattle or cattle in transit, because of the possibility for dust setting up an irritation not related to tuberculosis. It has its best use on the dairy farm, where conditions are such as to give sure results.

The experts have observed that in herds which are frequently tested by the subcutaneous method it is advisable to apply the intradermal and the eye test. The combined test sometimes detects reactors which have escaped detection by other means.

CRUSHED GRAIN IS FAVORED

Any Aid Given Cow in Digestion of Food Will Show in Increased Flow of Milk.

There is no animal harder worked than the dairy cow giving a large flow of milk, and any aid given her in digestion will show decided increase in milk and in her condition. Some grains are easy of mastication and digestion, but the usual ration of the corn belt is comprised mainly of wheat, corn, oats, rye and barley. All of these grains will show up in the feces if fed whole and unless the cattle are followed by hogs it is entirely lost.

Crushing grain is better than grinding it fine, for the digestibility may be decreased due to failure to mix properly with the saliva. Beware of dairy feeds too finely ground, for they may contain filler and cannot be properly digested.

BEETS ARE EXCELLENT FEED

Because of Labor in Harvesting and Cost of Handling Are Not as Cheap as Silage.

Sugar beets are an excellent feed for dairy cows, but because of the labor in harvesting and the expense of handling, are not as economical as corn silage. They have a larger amount of nutriment than mangels or rutabagas, but it is generally held that the latter will yield somewhat more per acre and are less difficult to handle. Sugar beets are not hard on the kidneys, but if fed in too large quantities there is a tendency to scour the animals. This is due to the high sugar content of the beet.

Automobiles using the state highway for the transportation of freight or passengers are placed under the supervision and control of the state public service commission.

The co-operative marketing association measure was amended so as to make it more effective. It will require a couple of years to determine how it will work out with respect to the producers, the middlemen and the consumers. Much, however, was expected of it.

The fish and game matters have been divorced and the commercial fishing laws been put into the hands of the fish commission, while the game fish and game propagation and regulation have been put in the hands of the game commission. The administrative law under which these two commissions must operate has been separated into a distinct and separate fish code and a game code.

Women of Oregon will be permitted to serve on juries. The privilege of jury service, however, is only optional with the members of the gentler sex who may refuse to serve in this capacity if they so choose, giving only their sex as the reason for such refusal.

The conferees on the agricultural appropriation bill allowed three strictly Oregon items, put in by Senator McNary, to stand, with a little reduction in two cases. An appropriation of \$15,000 to fight the pine beetle in the forests of Klamath county was agreed to, along with \$15,000 for the irrigation experiment station at Hermiston and \$9000 for a frost service in the Rogue river valley, with headquarters at Medford.

The personnel of the new fish commission for Oregon and the new state game commission, as provided for in the segregation bills which were passed at the recent session of the legislature and which have been signed by Governor Olcott, have been announced by the governor. Members of the fish commission are: Frank M. Warren, Portland, appointment to June 1, 1925; Christian F. Schmidt, Astoria, appointment to June 1, 1924; Al H. Powers, Powers, Coos county, appointment to June 1, 1923. The state game commission personnel follows: State at large—George H. Kelly, Portland, five-year term; game district No. 1 (counties west of the Cascade mountains), I. N. Fleischner, Portland, four-year term; Bert Anderson, Medford, two-year term. Game district No. 2 (counties east of the Cascade mountains), M. A. Lynch, Redmond, three-year term; Blaine Hallock, Baker, one-year term. Under the new laws, the jurisdiction over commercial fishing and over the administration of affairs of the wild game life of the state are completely divorced and placed under two separate commissions.

One of the cheapest and best winter rations for the dairy heifer, according to the Missouri station, is an average daily of about six pounds of alfalfa hay, two pounds of corn, and slage at free will (this means on the average about twenty pounds daily). This kind of ration has kept the heifers growing at just about the right rate to make the best kind of mature cows, and yet the expense has not been unduly great.

To Weigh and Measure Children.

To establish a standard table of the heights and weights of children a conference of representatives of the United States children's bureau, the United States bureau of education, the United States public health service and various educational and private organizations working for the betterment of children has just been held in New York city. At the present time various tables of measurement are in use by the different organizations engaged in weighing and measuring children. The results of the tests are not comparable; also considerable confusion has arisen because of apparent differences in the standards of normal development as given out by the various organizations.

A complete standard table will be prepared by a committee, and all future weighing and measuring of children can then be in accordance with their uniform table. The findings of the tests will be comparable and much greater use can be made of the facts revealed.

Falling Manna.

Nobody had ever seen the laziest man in the Texas oil fields do a stroke of work, yet he already had a few deep holes bored in his hand and was confidently predicting that some day he would strike oil.

"How d'ye do it, Billy?" asked a neighbor. "Ye sit around yer pi-sizzy all day and next mornin' ye got a new hole as deep as any of us?"

"It's by the grace of God and the Wright brothers," the laziest man confided. "The air passenger route to Mexico passes right over my place and pretty near every day they throw a bum of the aerial express."—American Legion Weekly.

Egg Made Monster Omelet.

An ostrich's egg from the New York zoological garden has sufficed for an omelet for 30 people. The food value and flavor are about the same as those of the egg of the domestic hen. The ostrich egg has less protein and more fat than meat, and its useful constituents include iron and phosphorus.

Columbia Trading Co.

General Merchandise
Boardman, Oregon

Confections Gasoline
Lunch Goods Oils
Fruits Vegetables Hay

FLOUR and FEED

W. M. HATCH

Real Estate Insurance

Legal Conveyances Made

BOARDMAN

OREGON

We are Now Prepared to Exchange Your Temporary Liberty Bonds, First to Fourth Inclusive, for Permanent Bonds, with all Interest Coupons Attached

First National Bank

of Hermiston

INSURANCE

Surety Bonds

Safety Deposit Boxes

Travelers' Checks

BUILD THE NATIONAL WAY

\$30,000 WORTH of BUILDING
ADVICE FOR THE ASKING

The final test of efficiency in home building is proven by the satisfaction which follows the completed home, itself.

The preliminary planning and designing is of vital importance to you.

Guesswork in connection with the arrangement, construction and cost is sure to cause dissatisfaction and regret.

Build right—you will probably build but once.

Call at our office and make the selection of your new home from a collection of over 500 modern designs.

Let us assume your building worries. You'll secure a home of beauty, comfort and convenience.

CALL AND TALK IT OVER

W. A. MURCHIE

Successor to

J. C. BALLENGER
LUMBER CO.