

## BOARDMAN TRADING CO.

"West Extension Supply Store"

Our line is now complete for the Farmer. We have:

Groceries  
Drygoods  
Shoes  
Hardware  
Implements  
Tires  
Feed

When they ask where you got it, say  
**Boardman Trading Co.**  
"WEST EXTENSION SUPPLY STORE"

## Silver

useful, enduring, beautiful—silently suggestive of the cozy warmth of perfect hospitality; always appropriate for any occasion.

"Sterling or Plate"

**Sawtelle's, Inc.**

Pendleton, *Jewelers* Oregon  
The Largest Diamond Dealers in  
Eastern Oregon

## Diamond Tires and Tubes

Mighty Easy Riding

Gas Oils Accessories

Expert Guaranteed Repair Work  
At Reasonable Prices

Service Car Any  
Time Any Where

If your Ford is sick We can cure it.  
No cure, no pay

**Boardman Garage**

## Local News

John Koski was a passenger for Portland Sunday.

W. A. Goodwin has been visiting in Portl and for the past two weeks.

Mumps and measles are the rage now and lemons are selling at a premium.

Mrs. Ballenger was hostess to Miss Crawford of New York City Monday and Tuesday.

Walt Coalhoon and the Miles brothers played for a dance at Cecil last Saturday night.

Mr. Gilbreath purchased one of the estrays sold at the Ray Brown ranch last week.

Lee Mead, agent at Messner, is moving on his homestead a mile or so south of Messner.

Edna Rhineheart and Catherine Brown are "enjoying" the measles, so is little Francine King.

If you have any fancy trading stock see Tom Miller and Glen Brown, they're loaded for all comers.

Archie Cummins has purchased the hay baler from H. L. Pearson and is baling to capacity daily.

The tree planting spirit is backed by the entire community and we bid fair to lead other localities in this movement.

L. V. Woodard is resigning as coal chute foreman at Messner and will soon be located on his ranch south of Boardman.

Captain Lamley of Astoria was a recent caller on Boardman inspecting his ranch which he is having leveled and seeded.

C. D. Albright has started building a house on his ranch south of Messner which will be occupied by the renter, G. B. Mitchell.

Mr. Humphrey has purchased a team, harness and wagon from Mr. Reese, the contractor, who built the viaduct over the cutoff

Mrs. Harter and the Misses McNeil and Leonard spent Sunday at Gradatim homestead as the guests of Mr. and Mrs. Larsen.

Joe Healey and wife have returned from their winter sojourn in Portland. It looks good to see signs of activity on their place again.

Glen Brown is digging him a well. It sounds like a paradox but his greatest difficulty so far in getting a well is due to a surplus of water.

Mrs. Alice Dingmon has established a hand laundry in keeping with the growth of our city, which she intends to develop as requirements demand.

Mr. and Mrs. Ballenger attended the invitation ball for married couples in Hermiston Saturday evening, Feb. 12th and report a very pleasant time.

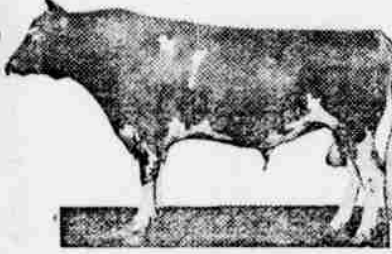
A. L. Larsen has purchased a registered Jersey bull from A. W. Agnew of Hermiston. It looks good to see this class of stuff coming to the community.

## DAIRY POINTS

### BULL ASSOCIATIONS GAINING

In Count-Up for Last Fiscal Year an Increase of 57 Per Cent is Noted—More in South.

In the count-up of bull associations for the last fiscal year made by the dairy division of the United States Department of Agriculture, associations are found all over the country. There are now 123, where there were only 78 the year before. This is an increase of 57 per cent. Thirty of the 48 states in the union are on the list. Associations are not equally numerous in all states, however, for four—Alabama, Pennsylvania, Mississippi



A Bull Should Be Selected to Improve the Dairy Qualities of the Herd He Is to Head.

and South Carolina—furnish nearly half of the total. The number of associations found in each of these four states is as follows: Alabama, 7; Pennsylvania, 21; Mississippi, 11; and South Carolina, 17. Three of these leading states are in the cotton belt. Dairying is comparatively new in that part of the country, and the men going into the business are building on the right foundations from the start. One of the important foundations of effective and lucrative dairying is cooperation, and the extension work carried on by the dairy division and by the various state agricultural colleges has been the means of introducing efficient methods at the outset wherever dairying is taken up in the South.

Pennsylvania is an old-established dairy state, but has taken to the bull-association idea in a remarkable manner, and has in fact the largest number of all.

### MOLASSES FOR DAIRY STOCK

Especially Valuable Where Cows Are Not Permitted to Exercise—Replaces Green Feed.

One of the helps of the livestock feeder which is being used more generally every day is the crude, or low grade, molasses from a sugar mill. The value of the feed has been found to be not only in the actual nutrition content, as indicated by the analysis, but because of its quality—not exactly succulency, but akin to that—which makes it an appetizer. Especially is it valuable where the cows are not permitted to run on pasture or where they are not permitted to exercise. The molasses acts both as a digester and tonic and takes the place of green feed which tends to keep the cows healthy and increases all their normal functions such as the milk producing powers. Then, too, dairy cows which are confined in small areas often lose their appetites, and when they do milk production naturally drops off. By adding a little molasses to the ration they will regain their appetites and besides eat more than they did without the molasses, which of course increases their milk production.

### LIBERAL FEEDING URGED

Dairy extensionists and authorities at University farm, St. Paul, Minn., are agreed that a policy of liberal feeding with dairy cattle is profitable and should be pursued wherever circumstances make it possible. The importance of adequate feeding has been shown time and time again. In one instance which may now be cited, feeding costs were increased in a year from \$53 per cow to \$83, but the income from each cow increased from \$120 to \$218 in the same interval, so that for an extra expenditure of \$30 profits were increased \$89 per cow.

### WINTER ATTENTION TO MILK

Unusual Care Should Be Exercised in Washing All Tin Utensils Used in Dairy.

The winter care of milk calls for unusual care in washing all tin things used. In summer it is easier to keep clean; we have the sunshine to help—the world's greatest purifier. So much the more reason why we should place extra stress on using hot water and soap, with good pure cold water for rinsing.

### HAVE GOOD PUREBREDS ONLY

Pedigrees Don't Amount to Much Unless Daughters Are Better Than Their Dams.

No stock-raiser should be satisfied until he has the services of purebred sires for his farm; not merely a purebred, but a productive purebred. Pedigrees don't amount to anything unless a sire can produce daughters better than their dams.

## Columbia Trading Co.

General Merchandise  
Boardman, Oregon

Confections Gasoline  
Lunch Goods Oils  
Fruits Vegetables Hay

FLOUR and FEED

## W. M. HATCH

Real Estate Insurance

Legal Conveyances Made

BOARDMAN

OREGON

We are Now Prepared to Exchange Your Temporary Liberty Bonds, First to Fourth Inclusive, for Permanent Bonds, with all . . . . Interest Coupons Attached . . . .

**First National Bank**  
of Hermiston

INSURANCE

Surety Bonds

Safety Deposit Boxes

Travelers' Checks

**DO NOT**

**Procrastinate  
BUILD  
NOW!**

**The Time is Right**

We Furnish Every-  
thing to Build With

WITH

**Quality---Service---  
Price!**

**J. C. BALLENGER  
LUMBER CO.**