

**WE INVITE YOU**

It will be our pleasure to have our patrons come at will and inspect the interesting things at Sawtelle's at perfect leisure—without obligation to buy. Everything is within reach, where it may be examined and compared. Our prices are all in plain figures and we are glad to explain the making of the various articles.

We Want You to Feel That This is Your Store

**Sawtelle's, Inc.**

Pendleton, *Jewelers* Oregon

The Largest Diamond Dealers in Eastern Oregon

**BOARDMAN TRADING CO.**  
"West Extension Supply Store"

Our line is now complete for the Farmer. We have:

Groceries  
Drygoods  
Shoes  
Hardware  
Implements  
Tires  
Feed

When they ask where you got it, say  
**Boardman Trading Co.**  
"WEST EXTENSION SUPPLY STORE"

**Diamond Tires  
and Tubes**

Mighty Easy Riding

Gas Oils Accessories

**Expert Guaranteed Repair Work**  
At Reasonable Prices

Service Car Any  
Time Any Where

If your Ford is sick We can cure it.  
No cure, no pay

**Boardman Garage**

**UMATILLA RAPIDS POWER  
SITE MEETING GOOD ONE**

Far and away the most influential, enthusiastic and promising meeting of the kind ever held in the northwest was the organization meeting of the Umatilla Rapids Power Site association in Pendleton Saturday.

Engineers who knew their subject explained the feasibility and ease of construction of the dam. Legislators voiced their approval and assured their help.

Railroads were represented and offered encouragement for the use of the power for transportation.

Bankers suggested means of financing the stupendous undertaking.

Prominent men from all sections were there and gave approval and manifested their eagerness to start with a rush and bring this wonderful proposition to a head.

The organization was affected without hitch and was made a strong one.

Judge G. W. Phelps, the temporary chairman, was made permanent president and Oregon and Washington are equally represented in the officers and committees.

Another meeting is to be held in Walla Walla Saturday, Feb. 19th. A large attendance is anticipated, for the project is in good, live hands—men who have and can do big things and the enthusiasm will not be allowed to die.

Let all attend who can. Here is a wonderful opportunity for the present, right now, if we strike while the iron is hot.

It means lower rates for electricity, more water for arid lands, economical fuel for transportation and factories—and can be obtained right now if we use judgment and concerted action.

**Will Plant Trees**

The Boardman schools are not going to wait for eastern Oregon Arbor Day but will have tree planting exercises in connection with the Lincoln Day program next Friday. Lines have been run along the east and west property lines of the school grounds where the trees will be planted. Each grade in the school will dedicate a tree. The Boardman garage donates the use of a truck to make a trip to Irrigon and Hermiston to collect trees for planting. The district will deed to the townsite a 60 foot street along the front of the school property.

**Think It Over**

The posting of a notice on the fence corner may have its virtues, but few people have the inclination to get out of their automobiles or tie up their teams to read a poorly composed ad tacked up on a fencepost. The same notice, perhaps at a cost not to exceed 25 to 50 cents, might be placed before a thousand farmers who would be permitted to read it while spending the evening around the parlor table, with plenty of time to think it over.

W. A. Goodwin has been spending the week in Portland.

To-night is the regular meeting of the Farm Bureau. A special communication from Mr. Hunt is at hand, and it is time the organization for the coming year should be completed. Ladies are requested to bring sandwiches and cake.

Saturday is the regular meeting of the Grange.

The monthly meeting of the school board will be held in the school office Saturday afternoon at 2.

Valentine social at the church Monday night, Feb. 14th. Miss Crawford, field secretary of New York will be present.

**DAIRY**

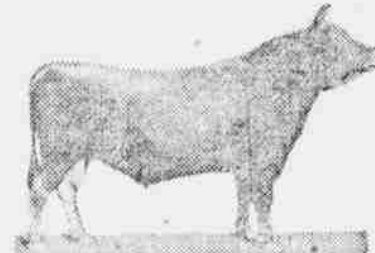
**WORK OF BULL ASSOCIATION**

Missouri Organization Doubled in Membership in Two Years Because of Its Usefulness.

Two years ago the United States Department of Agriculture and co-operating agencies organized a bull association in Webster county, Mo., with 31 members. Now there are twice that many members, due to the success and usefulness of the association.

Before the association was formed there were 18 bulls owned by the men who afterwards joined it. Upon the formation of the organization the number of bulls was reduced by two-thirds, because after the members had been arranged into blocks, it was found that six bulls were enough. These were much finer animals, however. Judging them by their money value, the new ones were three or four times as good as the ones they replaced, since the average investment per bull was \$75 before organization, and \$275 after.

Yet, owing to the smaller number of bulls needed under the co-operative arrangement, the cost per farmer was but little more. The members had on the average \$43.71 invested in their inferior bulls, while the superior bulls owned by the association cost each member only \$53.45. This \$10 increase of cost per member meant a \$200 increase of value in the individual bulls from which they now



Jersey Bull—A Sire is "More Than Half the Herd."

have service—one thing which accounts for the doubling of the membership of the association after running two years. The value of the calf crop will probably show a very much greater increase.

**FARMERS MIXING OWN FEEDS**

Dairymen Dissatisfied With Commercial Materials Are Turning to Co-operative Buying.

"Farmers are almost universally dissatisfied with mixed commercial feeds and are depending more on mixing their own rations," says Henry McGough, chairman of the dairy committee of the Illinois Agricultural association. He adds: "They are all interested in the co-operative buying of mill feeds such as bran, cottonseed meal and gluten and at times when there is a shortage in rangeland in the purchase of alfalfa hay."

Commercial mixed feeds ought to give more satisfactory results because the manufacturers with their improved machinery for mixing, large capital and ability to purchase feeds and grains in large quantities should be able to supply a satisfactory feed at a reasonable price. Out hulls, weed seeds, chaff and cheap molasses do not make a nourishing or satisfactory feed and their extensive use by some mixers has brought these disparaging remarks from Mr. McGough.

**SUCCESS IN DAIRY FARMING**

Carelessness in Breeding and Calf Raising is Sure to Result Disastrously to Herd.

Success in dairy farming depends to a great extent upon the careful rearing of the calves. Carelessness in breeding and calf raising is bound to result disastrously to a herd, or at least keep it at a standstill, as far as improvement is concerned. Without raising calves from which to replace discarded animals it is almost impossible to raise the average production of the herd. Purchasing cows for this purpose is a very unsatisfactory method. Cows placed on the market are almost certain to be of very ordinary grade, since a good cow whose value as a milk producer is known is not offered for sale at market price. Therefore, the dairy farmer should take every precaution in handling the young calves which are to be placed in the herd.

**PRODUCTION OF DAIRY COW**

Animal May Be Considered Profitable if She Yields 6,000 Pounds of Milk Each Year.

A cow may be considered profitable if she produces 6,000 pounds of milk or 200 pounds of butterfat per year. A good dairy cow should produce 8,000 pounds or more of milk or 400 pounds or more of butterfat.

**BEST TYPE OF DAIRY COW**

Must Be Capable of Producing Large Quantity of Milk and Butterfat Economically.

A dairy cow is one of distinct dairy type and dairy breed capable of producing a large quantity of milk and butterfat economically or at a profit, and to produce calves regularly as good or better than herself.

**Columbia Trading Co.**

General Merchandise  
Boardman, Oregon

Confections                      Gasoline  
Lunch Goods                      Oils  
Fruits Vegetables                      Hay

**FLOUR and FEED**

**W. M. HATCH**  
Real Estate Insurance  
Legal Conveyances Made  
BOARDMAN                      OREGON

We are Now Prepared to Exchange Your Temporary Liberty Bonds, First to Fourth Inclusive, for Permanent Bonds, with all . . . . Interest Coupons Attached . . . .

**First National Bank**  
of Hermiston

INSURANCE  
Surety Bonds      Safety Deposit Boxes      Travelers' Checks

**OREGON PRUNE WEEK**  
FEBRUARY 14TH TO 19TH

Everybody in the Northwest should eat  
**OREGON PRUNES**  
During Prune Week. This is your opportunity to buy Average Orchard Run of Oregon Italian Prunes 1920 Crop  
At the following wholesale prices:

Take advantage of this offer.  
By freight prepaid, 100 lbs. or over, 10c per lb  
By Parcel Post, prepaid, 25, 50 or 75 lbs., or over, 11c per lb

Packed only in 25 and 50 Pound Boxes  
**QUALITY GUARANTEED**

Orders mailed up to Feb. 19th will be accepted

Send Remittance with order to  
**Oregon Prune Campaign Committee**  
732 MORGAN BUILDING  
Portland                      -                      -                      -                      Oregon

References: U. S. National Bank, Portland, Oregon.  
Ladd & Bush, Bankers, Salem, Oregon.  
U. S. National Bank, Salem, Oregon.