

The Daily Astorian. ASTORIA, OREGON. FRIDAY, JANUARY 19, 1893.

The Beef Boom.

A Nevada cattle man has been telling the Chronicle that thousands of cattle perished in Nevada and Oregon last winter and that the weather prospects at present give ground for fears of equal loss this year.

SEEK

health and avoid sickness. Instead of feeling tired and worn out, instead of aches and pains, wouldn't you rather feel fresh and strong?

You can continue feeling miserable and good for nothing, and no one but yourself can find fault, but if you are tired of that kind of life, you can change it if you choose.

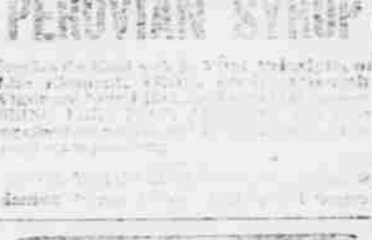
How? By getting one bottle of Brown's Iron Bitters, and taking it regularly according to directions.

BROWN'S IRON BITTERS is composed of iron in soluble form; Cinchona the great tonic, together with other standard remedies, making a remarkable non-alcoholic tonic, which will cure Dyspepsia, Indigestion, Malaria, Weakness, and relieve all Lung and Kidney diseases.



PERUVIAN SYRUP

Wholesale and Retail Dealers. Cures all kinds of coughs, colds, and bronchitis. It is a most valuable remedy for all ailments of the throat and lungs.



CENTAUR LINIMENT

Always cures and never disappoints. This wonderful liniment is the best for all kinds of rheumatism, neuralgia, and other painful conditions.

BANKING AND INSURANCE. I. W. CASE.

BROKER BANKER AND INSURANCE AGENT. OFFICE HOURS: FROM 9 O'CLOCK A. M. UNTIL 5 O'CLOCK P. M.

Home Mutual Insurance Co. OF CALIFORNIA. CAPITAL \$67,000,000. LIVERPOOL AND LONDON AND GLOBE.

PARKER'S HAIR BALSAM. Restores the Natural Color to Gray or Faded Hair. It is a most valuable preparation for all ailments of the hair.

PARKER'S GINGER TONIC. A Superior Health and Strength Restorer. It is a most valuable preparation for all ailments of the system.

ROBESON. A most valuable preparation for all ailments of the system. It is a most valuable preparation for all ailments of the system.

30 DAYS TRIAL. DR. DYER'S VOLTIC BELT. A most valuable preparation for all ailments of the system.

CANNERY FOR SALE. THE MOST COMPLETELY FITTED Cannery on the Columbia River is for sale.

PLUMBING, GAS & STEAM FITTING. All Work Warranted. Till further arrangements, can be found at the New Old Fellows Building.

\$3,700 Farm For Sale. 160 ACRES LYING WITHIN EIGHT miles of Astoria. 99 acres in meadow, 15 acres cleared, good frame house with 2 rooms, well finished, 2 barns, one 22 x 30 feet, and one 16 x 20 feet, with wagon shed and stables extra.

HOTELS AND RESTAURANTS.

PARKER HOUSE. H. B. PARKER, Prop. ASTORIA, OREGON.

FIRST CLASS HOTEL. ALL MODERN IMPROVEMENTS. HOT AND COLD BATHS.

ASTOR HOUSE. TREGG, BROESEN, Prop. ASTORIA, OREGON.

Hotel New & Newly Furnished. From \$1.00 to \$2.00 per day, according to room.

Best of Wines, Liquors and Cigar AT THE BAR.

ROSCOE'S FIRST CLASS Oyster Saloon. CENNAHUS STREET, ASTORIA.

GERMANIA BEER HALL. BOTTLE BEER DEPOT. CENNAHUS STREET, ASTORIA.

The Best of Lager 5 Cts. a Glass. Celebrated Columbia Brewery BEER.

ASTORIA Brewery Beer Saloon. The Best Beer 5 cts a Glass.

The Olympic Saloon. Opposite the Parker House.

Stenhans Varieties GRAND OPENING. A LIVELY ENTERTAINMENT.

\$500 Reward FOR A CURABLE CASE. HEALTH. DISEASE.

Le Ricchan's Golden Balsam No. 1 Cures Cancers, first and second stages; Sores on the Legs and Body; Syphilitic Catarrh, diseased Sculp, and all primary forms of the disease.

Le Ricchan's Golden Balsam No. 2 Cures Tertiary, Mercurial, Syphilitic Rheumatism, Pains in the Bones, Ulcerated Throat, Syphilitic Rash, Lumps, etc., and eradicates all diseases from the system, whether caused by bad treatment or abuse of mercury, leaving the blood pure and healthy.

Le Ricchan's Golden Spanish Antidote for the cure of Gonorrhoea, Gleet, etc. Price, \$2.50 per Bottle.

Le Ricchan's Golden Spanish Injection, a wash for cure of Gleet, Stricture, Discharge of the Urinary and Bladder, etc. Price, \$1.50 per Bottle.

Le Ricchan's Golden Ointment for the effective healing of Syphilitic Sores and Eruptions. Price, \$1.00 per Bottle.

Le Ricchan's Golden Pills for Weakness, loss of physical power, and all diseases arising from abuse and excess of over-work. Price, \$3.00 per Box.

C. F. RICHARDSON & CO. Agents. 427 & 429 Sansome Street, corner Clay. S. F. CALIF.

Notice. THE SCHOOL TAXES FOR SCHOOL District No. 2 are now due and payable at my office, in The Fisherman's Packing Company's building. These taxes become delinquent thirty days from date.

Upper Astoria, Jan. 5, 1893. ROBERT HAMILTON, School Clerk.

SHIPPING NOTICES.

Columbia Transportation Co. FOR PORTLAND. (FAST TIME) The popular steamer FLEETWOOD.

Monday, Wednesday and Friday at 6 A.M. arriving at Portland at 7 P.M. Returning leaves Portland every Tuesday and Thursday at 6 A.M.

Arriving at Astoria at 1 P.M. An additional trip will be made on Sunday of Each Week. Leaving Portland at 9 o'clock Sunday Morning.

Astoria and Portland. Str. WESTPORT, F. R. TURNER, MASTER.

New Vessel. M. NEWSTEAM YACHT RELIC.

MARKETS. CENTRAL MARKET. General assortment of table stock constantly on hand, such as

Canned Fruits and Jelly. Bacon, Hams, Shoulders, Lard, EGGS, BUTTER, CHEESE.

Fresh Fruits and Vegetables, FISH, POULTRY AND GAME. In the season.

CIGARS AND TOBACCO. Best of WINES AND LIQUORS. All cheap for CASH. Goods sold on commission. Opposite I. W. Case's.

ASTORIA MARKET. D. K. WARREN, COR. CENNAHUS AND HAMILTON STS.

FRESH AND CURED MEATS, Vegetables, Butter, Eggs. And a full line of

CHOICE FAMILY GROCERIES. Constantly on hand. SHIPS SUPPLIED AT LOWEST RATES.

Washington Market, Main Street, - Astoria Oregon. BERGMAN & BERRY.

RESPECTFULLY CALL THE ATTENTION of the public to the fact that the above Market will always be supplied with a FULL VARIETY BEST QUALITY

FRESH AND CURED MEATS! Which will be sold at lowest rates, wholesale and retail. Special attention given to supplying ships.

STAR MARKET. WHERRY & COMPANY, Fresh and Cured Meats, Vegetables, FRUITS, BUTTER, and EGGS.

OPPOSITE OCCIDENT HOTEL. CENNAHUS Street, Astoria, Oreg.

Piles! Piles! Piles! A Sure Cure Found at Last! No One Need Suffer!

A sure Cure for Blind, Bleeding, Itching and Ulcerated Piles has been discovered by Dr. Williams (an Indian Remedy), called Dr. Williams' Indian Ointment. A single box has cured the worst chronic case of 25 or 30 years standing. No one need suffer five minutes after applying this wonderful soothing medicine. Lotions, instruments and electricity do more harm than good. Williams' Ointment absorbs the tumors, always the intense itching, particularly at night after getting warm in bed, acts as a poultice, gives instant relief, and is prepared only for Piles, itching of the private parts, and for nothing else.

Send what the Hon. J. M. Coffinbury of Cleveland, says about Dr. Williams' Indian Pile Ointment: I have used scores of Pile Cures, and it affords me pleasure to say that I have never found anything which gave such immediate and permanent relief as Dr. Williams' Indian Ointment.

For sale by all druggists or mailed on receipt of price, \$1.00. HENRY & CO. Prop. of the Ointment. Wholesale Agents, Portland, Oregon.

TRANSPORTATION LINES.

Oregon Railway & Navigation COMPANY. OCEAN DIVISION.

Steamers sail from Portland for San Francisco twice a week, on Tuesdays and Fridays, at midnight.

Returning, leave San Francisco for Astoria and Portland Wednesdays and Saturdays at 10 A.M.

Through Tickets sold to all principal cities in the United States, Canada and Europe.

River and Rail Division. On and After Nov. 20, 1892. RAIL DIVISION. Trains leave Portland for Dalles 4:00 P.M. Sundays excepted.

RIVER DIVISION (Middle Columbia). Boats leave Portland for Dalles at 7:00 A.M.

Ilwaco Steam Navigation Co. WINTER SCHEDULE. Astoria to Forts Stevens, Canby, and Ilwaco.

Connecting by Stages for Astoria and Olympia. On Mondays, and Thursdays, at 7 A.M.

Fort Stevens, Fort Canby, and Ilwaco ON TUESDAYS, WEDNESDAYS, FRIDAYS and SATURDAYS.

The steamer will leave Astoria at 9 A.M. as formerly, not being confined strictly to schedule time.

Fare to Fort Stevens.....50cts Canby and Ilwaco.....\$1.00

Ilwaco freight, by the ton, in lots of one ton or over, \$2.00 per ton.

For Tickets, Tows or Charter apply at the office of the Company, Gray's wharf, foot of Benton street.

J. H. D. GRAY, Agent.

Oregon & California R.R. Co. On an after Sept. 24, 1892, trains will run as follows, DAILY (except Sundays).

Between PORTLAND and BIDDLE'S. MAIL TRAIN ARRIVE. LEAVE. PORTLAND.....7:30 A.M. BIDDLE'S.....8:30 P.M. BIDDLE'S.....3:30 A.M. PORTLAND.....4:35 P.M.

ALGANY EXPRESS TRAIN. LEAVE. PORTLAND.....4:50 P.M. BIDDLE'S.....5:30 P.M. BIDDLE'S.....4:45 A.M. PORTLAND.....10:45 A.M.

WESTSIDE DIVISION. Between Portland and Corvallis. MAIL TRAIN ARRIVE. LEAVE. PORTLAND.....8:50 A.M. CORVALLIS.....3:50 P.M. CORVALLIS.....8:50 A.M. PORTLAND.....3:50 P.M.

Close connections made at Biddle's with the Stages of the Oregon and California Stage Company.

For Tickets for sale at all the principal points in California and the East, at Company's Office.

Corner F and Front Sts., Portland, Or. Storage will be charged on freight remaining at Company's Warehouse over 24 hours. Freight will not be received for shipment after 5 o'clock P.M. on either the East or West side Division.

E. P. ROGERS, Gen'l Freight and Passenger Agent, R. KOEHLER, Vice President and Manager.

Shoalwater Bay Transportation Co. SUMMER ROUTE. Astoria to Olympia, Touching at Fort Stevens, Fort Canby, Ilwaco, North Beach, Oysterville, North Cove, Petersens Point, Hoquiam, Montezuma, and all points on Shoalwater Bay, and Gray's Harbor.

GEN. MILLES, On Columbia River. GEN. CANBY, Shoalwater Bay. GEN. GARFIELD, Shoalwater Bay. MONTESANO, Gray's Harbor. Connecting with Stages over Portages.

Leave Astoria for Olympia, at 7 A.M. On Mondays and Thursdays through trip in 60 hours. Leave Olympia for Astoria on same days.

SAINT MARY'S HOSPITAL, ASTORIA, OREGON. THIS INSTITUTION, UNDER CARE of the Sisters of Charity, is now ready for the reception of patients.

Private rooms for the accommodation of any desiring them. Patients admitted at all hours, day or night. No physician has exclusive right, every patient is free to and has the privilege of employing any physician he prefers.

United States Marine. Seamen who pay Hospital Dues, are entitled to free care and attendance at this Hospital during sickness. Permits must be obtained for United States Marines at the Custom House.

SIGNERS OF CHARITY.

COMMERCE AND TRADE.

PORT OF ASTORIA. READY FOR SEA. Fulla, Gen'l Quonseton Jan 27. Kalkala, Br Sp Liverpool Jan 12. Fondagon, Br Sp Liverpool Jan 11. General Fairchild, An Sp Quonseton Jan 9. Wilho, An Sp Quonseton Jan 5.

SAILED. Queen of the Pacific, S.F. Jan 17. VESSELS IN THE RIVER. Lizzie Bell, Br Bk. Lattinworth, Br Bk. Helicon, An Sp. Henry W. Ward, An Sp. City of Carlisle, Br Bk. El Capitan, An Sp. Jeanne Landrie, An Sp. Nelson, Br Bk. Lennie Butler, An Sp. Lantaship, Br Bk. Flamingo, Br Sp. Harkness Light, An Sp. J. M. Lantaship, Br Bk. Victoria, An Sp. Rockwell, Br Bk. Lantaship, Br Bk. Lantaship, Br Bk. Lantaship, Br Bk.

VESSELS ON THE WAY. From Foreign Ports, for the Columbia River. Krista, Br Sp, Adelaide, Sept 24th. Gurnook, Br Bk, Brisbane Nov 6. Lombard, Br Bk, Liverpool Dec 6. Mary Rogers, Br Bk, Melbourne Nov 7. Epsworth, Br Bk, Liverpool Dec 2. Sanderson, Br Bk, Brisbane Nov 21. Ulloch, Br Bk, September 19.

From American Ports. Chesapeake, An Sp, Philadelphia, Dec 11. Harry Batts, An Sp, New York, Dec 11. C. S. Hubbard, An Sp, New York, Dec 11. Imperial, An Sp, New York, Dec 11. Indiana, An Sp, Philadelphia, Nov 19. Rooper, An Sp, Philadelphia, Oct 1. Titan, An Sp, New York, Dec 11. Young America, An Sp, New York, September 3.

FLDE TABLE FOR ASTORIA. From tables of United States Coast Survey. High Water. Low Water. Date. A.M. P.M. A.M. P.M.

Common Council. Regular meetings second and fourth Tuesday evenings of each month, at 7 1/2 o'clock. All persons desiring to have matters stated upon by the Council, at any regular meeting, must present the same to the Auditor and Clerk on or before the Friday evening prior to the Tuesday on which the Council holds its regular meetings.

Astoria Lodge No. 40, I. O. O. F. Regular Meeting every Tuesday Evening at 7 1/2 o'clock, at Good Templar's Hall, Cennahus Street, Astoria, over C. L. Parker's Store. Members of the Order, in good standing, are invited to attend. Degree meetings 1st Monday each month. By order of the W. M.

Temple Lodge, No. 7, A. F. A. M. Regular Communications first and third Tuesday in each month, at 7 1/2 o'clock, P. M., at the Hall in Astoria. Members of the Order, in good standing, are invited to attend. By order of the W. M.

American Legion of Honor. Regular meetings of American Legion No. 38, is held on the first and third Saturday of each month, at 7 o'clock P. M. By order of Council, R. V. MONTRELL, Sec'y.

Special Meeting of Stockholders. A MEETING OF THE STOCKHOLDERS of the O. F. & L. Association will be held at the hall of Beaver Lodge No. 35, I. O. O. F., on Thursday evening, Feb. 18, 1893, immediately after, concluding the business of the Lodge. By order of the Board of Directors, J. J. MCELLEN, Secretary.

That Hacking Cough can be so quickly cured by Shiloh's Cure. We guarantee it. Sold by W. E. Dement.

Leinenweber & Co., ESTABLISHED 1850, ASTORIA, OREGON.

TANNERS AND CURRIES. Manufacturers and Importers of ALL KINDS OF LEATHER AND FINDINGS. Wholesale Dealers in OIL AND TALLOW.

FOR SALE! I offer for sale my ranch near Skippoon in this County; it consists of 160 ACRES.

Eighty Acres improved, with good dwelling House; Two Barns, Out Houses, etc.; A Fine Orchard.

Everything is well improved and in good condition. A large assortment of Farming Implements, Three Passenger Coaches, One Ruggy, Nine Head Horses, Cattle, Hogs, Etc.

This affords a rare chance for a man to get a good home in the oldest settled section in the state.

TERMS FAVORABLE to one meaning business. C. A. MAGUIRE.

HANSEN BROS. HAVE REMOVED! From their old quarters to their NEW SHOP.

And Factory near Kinney's Cannery. Astoria Markets. RETAIL. BUTTER—Extra fancy 70c 75 cents a roll. CURRIES—160230.

DEERED FISHES—Blackberries 25c; Prunes 25c; Apples 25c; Peaches 25c; SUGAR—Cuba, 14; crushed, 16c; fine crushed, 18c; extra gran. 15c; dry gran. 12c; extra gran. 13c, G. C. 12c.

EGGS—49 cts 50c per doz. OATS—22 00 22 25 per cwt. POTATOES—21 75 per cwt. HONEY—Superfine 50c; Extra 50c; Corn Meal 40c; Extra 40c; Buckwheat 35c 40c.

FRESH MEATS—Choice cuts, Lamb, 50c; Beef 12 1/2c; Pork 15; Mutton 12 1/2c. By the carcass 15c. MEATS—Breakfast bacon 12c per lb; sides 15c; hams 18c; shoulders 24c; smoked beef 15c; corned beef 10c; corned pork 10c; LARD—in tins and caddies 12c 1/2c; HONEY—in frames 50c; in glass 50c. MILL FEED—Bran 25c 30c; chop feed 30c; Shorts 25c 30c; Hay 25c 30c; cow middlings 40c; Chop barley, 137.50.

PITCHER'S GASTROIA is not Narcotic. Children grow fat upon it, Mothers like, and Physicians recommend it. It regulates the Bowels, cures Wind Colic, allays Feverishness, and Gastrostomachic.

WELDEMEYER'S OAT-FARER CURE, a Constitutional Antidote for this terrible malady, by Absorption. The most Important Discovery since Vaccination. Other remedies may relieve outward, this cures at any stage before Consumption sets in.

MAGNUS G. CROSBY, DEALER IN HARDWARE, IRON, STEEL, IRON PIPE and Fittings, PUMPS AND STEAM FITTERS, Goods and Tools, SHEET LEAD STRIP LEAD, SHEET IRON TIN AND COPPER.

Cannery and Fishermen Supplies. Stoves, Tin Ware and House Furnishing Goods.

JOBBER IN SHEET IRON, TIN, COPPER PLUMBING and STEAM FITTING. Done with neatness and dispatch. None but first class workmen employed. A large assortment of

SCALES. Constantly on hand. J. H. D. GRAY. Wholesale and retail dealer in FLOUR. ALL KINDS OF FEED, Hay, Oats, Straw, Wood, Etc.

General Storage and Warehouse on reasonable terms. Foot of Benton Street, Astoria Oregon.

FOR SALE. A TENACPA, OREGON, 24 HEAD Work oxen and complete outfit for two logging camps, including 300 acres timber land in sections 21 and 22 T. N. W. Said oxen are already made into the timber.

To any person wishing to engage in the logging business, this is the best chance on the Columbia River for about \$200,000 lot of No. 1 Fir and Spruce timber. Terms easy. For particulars inquire of J. F. WARREN, Knappa, Or.