

The Daily Astorian.

ASTORIA, OREGON: TUESDAY, FEB. 22, 1881

COMMERCE AND TRADE.

Financial. Silver, 31 cent. Gold, 100.00. Exchange on New York...

PORT OF ASTORIA.

READY FOR SEA. Sailed. On order of the Oregonian...

ARRIVALS FROM SEA.

Molokai, 34, 200 tons. Columbia, 30, 200 tons. North Bend, 144, 200 tons...

VESSELS ON THE WAY.

From American Ports.

Orient, brig, 217 tons. Waltham, S F. Feb 21. Tuxedo, sloop, 20 tons...

From Foreign Ports.

Agnes Howard, sloop, 120 tons. Metcalfe, Cardiff. De 28.

THE MARKETS.

Astoria Markets.

Wheat—Superior \$1.00; Extra \$1.00. Corn—Meal \$1.00...

San Francisco Markets.

Wheat—\$1.75 per bushel. Flour—\$1.00 per barrel...

TIDE TABLE FOR ASTORIA.

Table with columns: Date, High Water, Low Water. Rows for Feb 22, 23, 24, 25, 26, 27, 28.

Never go shopping without consulting the advertising columns of THE ASTORIAN...

Warranty deeds, quit claim deeds and mortgages, for sale at this office.

Columbia River Exports.

DECEMBER. To Quacothana, per Ringhader. From Portland 19,656 cts wheat...

JANUARY.

To Quacothana, per Latta Bredt. From Portland 25,400 cts wheat...

FEBRUARY.

To Liverpool, per Childers. From Portland 12,277 bbls flour...

CHAMBER OF COMMERCE AND ASTORIA.

Regular meeting every 1st and 3rd Monday of each month...

Knights of Pythias.

Aster Lodge, No. 6, K. of P. meet every Wednesday evening...

Astoria Lodge No. 40, I. O. G. T.

Regular meeting every Tuesday evening at 7 o'clock...

Temple Lodge, No. 7, A. F. A. M.

Regular Communications first and third Tuesdays in each month...

Sea Side Lodge No. 12, A. O. U. W.

The stated meetings of this lodge shall be on Saturday evening...

Common Council.

Regular meetings second and fourth Tuesday evenings...

THE ASTORIA PHOTOGRAPH GALLERY.

CARD SIZE PHOTOGRAPHS. \$2.50 Per Dozen. CABINET SIZE PHOTOGRAPHS \$4.00 Per Dozen.

DRESS MAKING.

MRS. F. W. HUNLEY. MAIN STREET. To measure building, new doors...

FIRST CLASS DRESS MAKING.

Ladies of Astoria are respectfully solicited for a share of their patronage.

MAGNUS C. CROSBY.

DEALER IN Stoves, Tinware, and House Furnishing Goods.

GERMANIA BEER HALL.

BOTTLE BEER DEPOT. CROSBY STREET, ASTORIA.

The Best of Lager 5 Cts. a Glass.

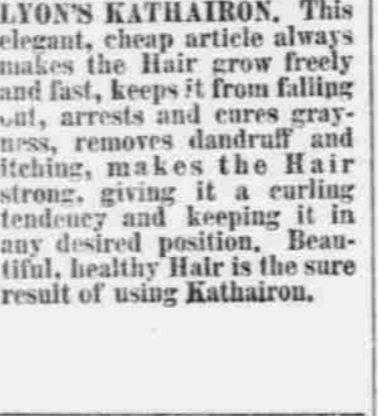
Celebrated Columbia Brewery BEER.

Left at this place will be promptly attended to. No cheap San Francisco Beer sold at this place.

MISCELLANEOUS.

Gentle Women.

Who want glossy, luxuriant and wavy tresses of abundant, beautiful Hair must use LYON'S KATHAIRON.



HOSTETTER'S BITTERS.

STOMACH BITTERS. No Time Should be Lost. If the stomach is disordered...

Children CRY FOR Pitcher's Castoria.

Mothers like and Physicians recommend it. IT IS NOT NARCOTIC.

CENTAUR LINIMENTS.

The World's great Pain-Relieving remedies. They heal, soothe and cure Burns, Wounds, Weak Back and Rheumatism upon Man, and Sprains, Galls and Lameness upon Beasts.

SPURTS OF DISGUSTING MUCUS.

Snuffles, Cracking Pains in the Head, Fetid Ereath, Deafness, and any Catarrhal Complaint, can be exterminated by Wei De Meyer's Catarrh Cure.

WISTAR'S BALSAM OF WILD CHERRY.

ONE OF THE OLDEST AND MOST RELIABLE REMEDIES IN THE WORLD FOR THE CURE OF Coughs, Colds, Hoarseness, Sore Throat, Bronchitis, Influenza, Asthma, Whooping Cough, Croup, and Every affection of the THROAT, LUNGS AND CHEST.

GERMANIA BEER HALL.

BOTTLE BEER DEPOT. CROSBY STREET, ASTORIA.

The Best of Lager 5 Cts. a Glass.

Celebrated Columbia Brewery BEER.

Left at this place will be promptly attended to. No cheap San Francisco Beer sold at this place.

G. H. BRYANT.

SCOTCH SALMON TWINES.

PACIFIC COAST AGENTS FOR J. R. LEESON & CO., BOSTON.

MISCELLANEOUS.

Page & Allen.

Wholesale and retail dealers in Groceries, Provisions, Crockery.

Glass and Plated Ware.

FRUITS AND VEGETABLES.

Wines, Liqueurs, Tobacco & Cigars.

W. E. DEMENT.

ASTORIA, OREGON. DRUGS AND CHEMICALS. Toilet and Fancy Articles.

PATENT MEDICINES, ETC.

B. W. BLOOD.

ASTORIA, OREGON. FLOATS, BUOYS, Copper Handles, Mallets, Etc.

SAINT MARY'S HOSPITAL.

ASTORIA, OREGON. THIS INSTITUTION, UNDER CARE OF THE SISTERS OF CHARITY, is now ready for the reception of patients.

UNITED STATES MARINE.

Seamen who pay Hospital Dues, are entitled to Free care and attendance at this Hospital during sickness.

PIONEER STOVE AND TIN STORE.

Magee Standard Ranges, Etc. ASTORIA, OREGON.

BROWN & McCREE.

STEVEDORES AND RIGGERS. Astoria office—At E. C. Holden's Auction Store.

NEW VAILLANT & CO.

31 & 33 CALIFORNIA ST., SAN FRANCISCO. GRAIN BAGS, BAG TWINES, BURLAPS, ORESACKS, COTTON ROPE, SEINE TWINES.

SCOTCH SALMON TWINES.

PACIFIC COAST AGENTS FOR J. R. LEESON & CO., BOSTON.

MISCELLANEOUS.

KENDALL'S SPAVIN CURE.

The Most Successful Remedy ever discovered in its class. It cures all cases of Spavin, Gout, Rheumatism, etc.

KENDALL'S SPAVIN CURE ON HUMAN FLESH.

Case of Dr. J. Kendall & Co. Agents. I have a very true story to tell...

KENDALL'S SPAVIN CURE.

Is sure in its effects, mild in its action, it does not blister, and yet it is penetrating and powerful to reach any deep seated pain...

KENDALL'S SPAVIN CURE.

SOLD BY ALL DRUGGISTS. From Astoria to Knappton and all Points on the Bay.

FROM ASTORIA TO KNAKPPTON AND ALL POINTS ON THE BAY.

THE STEAMSHIP CALIFORNIA. JAMES CARROLL, Commander.

WELCH HILL WATER WORKS.

Furnish pure SPRING WATER to patrons. Custom Solicited.

Wanted.

15,000 POUNDS BAGS OF all kinds clean and dry, at the Columbia shop, Main Street, by J. JOPLIN.

TRANSPORTATION LINES.

Oregon Railway & Navigation COMPANY.

OCEAN DIVISION.

For San Francisco.

STEAMSHIP LEAVES EVERY FIVE days at 3 A. M. as follows:

Table with columns: Month, Day, Ship Name, Destination.

River and Rail Division.

Columbia, Willamet and Yamhill Rivers.

Table with columns: Month, Day, Ship Name, Destination.

GENERAL OFFICES.

Corner Front and D Streets, Portland. J. M. CRACKEN & Co., Agents State of California.

Astoria to Forts Stevens, Canby, Ilwaco, Oysterville and Olympia.

Until further notice the Ilwaco Steam Navigation Co's steamer GENERAL CANBY, MASTER WHITCOMB, will leave Astoria on Mondays, Tuesdays, and Saturdays.

Oregon & California R.R. Co.

On an after Oct. 1, 1880, trains will run as follows: DAILY Except Sundays.

From Portland to Roseburg. LEAVE PORTLAND 7:30 P. M. ARRIVE ROSEBURG 7:50 P. M.

From Astoria to Knappton. LEAVE ASTORIA 7:30 P. M. ARRIVE KNAKPPTON 8:25 P. M.

From Portland to Corvallis. LEAVE PORTLAND 7:30 P. M. ARRIVE CORVALLIS 8:25 P. M.

From Portland to Sitka. LEAVE PORTLAND 7:30 P. M. ARRIVE SITKA 8:25 P. M.

From Portland to Astoria. LEAVE PORTLAND 7:30 P. M. ARRIVE ASTORIA 8:25 P. M.

From Portland to Astoria. LEAVE PORTLAND 7:30 P. M. ARRIVE ASTORIA 8:25 P. M.

From Portland to Astoria. LEAVE PORTLAND 7:30 P. M. ARRIVE ASTORIA 8:25 P. M.

From Portland to Astoria. LEAVE PORTLAND 7:30 P. M. ARRIVE ASTORIA 8:25 P. M.

From Portland to Astoria. LEAVE PORTLAND 7:30 P. M. ARRIVE ASTORIA 8:25 P. M.

From Portland to Astoria. LEAVE PORTLAND 7:30 P. M. ARRIVE ASTORIA 8:25 P. M.

From Portland to Astoria. LEAVE PORTLAND 7:30 P. M. ARRIVE ASTORIA 8:25 P. M.