



**COLDWELL
BANKER**
COAST REAL ESTATE

541-997-7777

Servicing Florence Since 1956

"We're next to the Bridge"
100 Hwy. 101, Florence, OR



FEATURED NEW LISTINGS, PRICE REDUCTIONS & UPDATES FOR THE WEEK OF NOVEMBER 3, 2021



NEW
3910 MUNSEL CREEK DR
Exceptionally well maintained home on the Pacific Coast, central to town and Old Town. Excellent open floor plan w/ vaulted ceiling in spacious master & great room. Ample storage inside and out, three garden sheds, wood stove. Easily heats house; regional zoned heating. Solar tubes, sunroom naturally bring in the light. Double car garage with on/off street parking for five cars, motorhome(s), boat, and buggy, 90ft RV Pad. Deck with ADA easy access. Dog ready, new fence/gate. Don't miss this one. **\$673,900 #12272 MLS#21011432**



PENDING **NEW**
1008 TROON CIRCLE
Wonderful custom touches and upgrades in this Sandpines West craftsman style home. Corner lot with circular drive and oversized garage. Solid surfaces, hardwood floors and custom built-ins abound. Covered and fenced outdoor area. Cedar planters and professional landscaping. Heated floors, top-end appliances and much more. Quiet, comfortable, luxury living awaits in this gated Sandpines West home. **\$665,900 #12271 MLS#21198738**



1601 RHODODENDRON #646
GREENTREES WEST 646..GREAT VALUE. 2 Bedroom, 2 Bath spacious 1986 Barrington manufactured home. Exceptional above grade lot with huge RV parking (water & 220 electric), newer roof, oversized master bedroom, 2 car garage with shop area, covered deck, fenced backyard and a "peek" of the dunes. **\$299,000 #12270 MLS#21316114**



PENDING
16 SEA WATCH CT
AMAZING VIEWS! New roof 2021, Heat pump 2021, Exterior painted in 2020, New water heater 2020. Siuslaw riverfront (Permitted & Engineered Bank) with breathtaking sunset & ocean views. Engineered riverbank. Deck for outside living. Large paver patio with a gas fire pit. Main floor has great room, dining, master, guest room & office. Kitchen & guest bath with granite tile, solid wood cabinets & stainless appliances. Spacious rooms, workout area & toy room on upper level. Trailer parking behind gate. **\$839,000 #12266 MLS#21629741**



75 HARBOR ST #100
One-of-a-kind, ultra-rare waterfront commercial condominium in Old Town Florence. Directly adjacent to boat launch & boardwalk - next to all the action and recreational activity. Panoramic river and harbor views with covered outdoor seating areas. This prime waterfront space is ready for your next coastal venture! Please inquire for more details. **\$998,000 #12263 MLS#21217647**



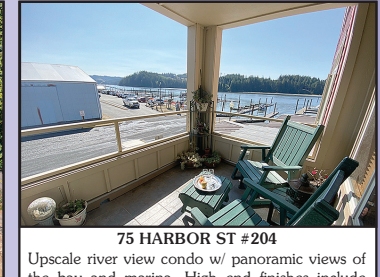
38 SPYGLASS LANE
One story cottage-style home in a gated community. New fence and freshly painted porch. Private backyard. 3 bedroom/2 bath priced to sell. It won't be around long!! Schedule your showing today. By appointment only. **\$398,500 #12259 MLS#21131231**



935 8TH STREET
Charming well cared for home in central Florence. This home received a new roof in 2020. Home is close to post office, shopping, and medical facilities. This south facing home takes full advantage of the daylight through large windows. Established low maintenance landscaping features easy to care for native plants. Fenced back yard is great for morning coffee or soaking in the hot tub. Large master bedroom with walk in closet and a well appointed master bathroom. **\$510,000 #12255 MLS#21357073**



11381 E MAPLETON RD
This retro inspired manufactured home is perfectly situated on 1.5 acres of quiet, riverfront property. Structurally sound, cleaned and move-in ready. Plenty of space to add a shop, garden or just enjoy the serene country surroundings. Small shed, a covered patio and 15x15' shop off the carport round out this must see property. **\$389,000 #12254 MLS#21239691**



75 HARBOR ST #204
Upscale river view condo w/ panoramic views of the bay and marina. High end finishes include wood floors & granite counters. Main living area has a gas fireplace, south/east facing balcony with propane hookup. Kitchen features SS appliances, pantry & breakfast bar. Excellent primary suite w/ jettied tub, large closet w/organizer. Secure parking & storage available. Check out the virtual tours. These units don't come up for sale often. Don't let this pass you by. **\$579,900 #12226 MLS#21620413**



85180 SOUTH SLOUGH RD
Great opportunity to have almost 7 acres up the South Slough. Serenity abounds with panoramic valley views and frontage on a small creek. This 3 bedroom, 2 bathroom home and detached guest house/single-wide each on its own septic. Large detached garage and oversized carport. Large covered front porch and rear deck with canning kitchen. The home has had some updating but is a blank canvas for your imagination. Great setting just 10-12 minutes to Old Town. Great Opportunity! **\$399,900 #12204 MLS#21334260**



COMMERCIAL
1699 PINE ST
Great commercial property centrally located in town. Long term tenant. 5 year lease with 3% annual lease increase. 83X120 corner parcel. Great redevelopment opportunities long term. **\$329,900 #12240 MLS#21682685**



COMMERCIAL DIVERSITY
Calling all lawyers, stylists, accountants, artists, massage therapists, consultants, craftspeople, booksellers, dentists & dreamers! This appealing & affordable commercial space in the heart of Old Town is just that - adaptable for use. Start planning today. MOTIVATED SELLER! **\$138,000 #11977 MLS#20333226**



131 HWY 101 YACHATS
Come live the coastal dream in Yachats Oregon! Ona Restaurant and Lounge is a profitable, upscale turn-key restaurant that opened in October 2010. This well-established restaurant menu features coastal cuisine that is globally inspired and locally sourced. Craft cocktails and small vineyard, boutique northwest wines. Fine dining with a relaxed, family friendly atmosphere is enhanced by a dining room and heated patio that overlooks the Yachats River and Pacific Ocean. **\$325,000 + Inventory #11939 MLS#19590284**



TL2600 22ND ST
Rare and coveted 65x120 multi-family zoned lot in the heart of the city. Build your next project here! HR (High Density Residential) Zoning in-fill lot conveniently close to everything: bank, shopping, dining. No others like it currently available. Duplex, tri-plex?? Check with city for permitted multi-family uses. **\$98,500 #12167 MLS#21337692**



NEW
SIUSLAW TL01000
Boat Access Only - Riverfront recreation at it's finest. After a day of fishing or crabbing, head over to the sandy beach for a cookout. This rare parcel where the North Fork feeds into the Siuslaw has plenty of space for your camping adventures. Perfect setting for day trips, overnight stays, even a yurt! **\$75,000 #12273 MLS#21018764**



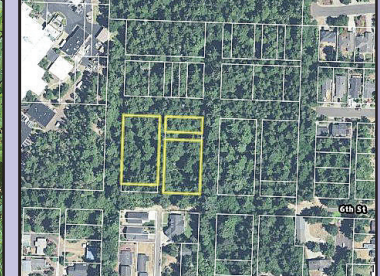
SAILORS RAVINE #800
Don't miss out on this rare river and ocean view lot! Mostly level 1/3+ acre elevated lot providing expansive views down the river to the south, north to the jetty, and also to the east. Enjoy the gorgeous sunset and the sounds of the sea in this exclusive gated community of fine homes. One of the very last lots in the pristine Shelter Cove neighborhood. **\$219,900 #12252 MLS#21293079**



JAKE MANN LANE LOT
Fantastic views from this over 1/2 acre lot, located in Rhodoview Dunes. This is a gated community of upper-end view homes. All utilities are stubbed in and the lot is ready to build with good overall topography for the subdivision. This lot is just minutes from downtown and close to the Ocean Dunes Golf Course. This lot is ready for your dream home! **\$89,000 #12227 MLS#21642292**



TL#1900 SHORE CREST DR
Don't pass up this great opportunity to build on this nice wooded lot with utilities at the street. This is a nice private setting just minutes to Old Town, the beach and Sutton Lake is just around the corner. Great lot with mature timber and ready to develop. **\$62,000 #12222 MLS#21644765**



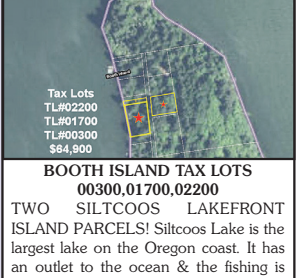
7TH STREET TAX LOT #2400
Future development opportunities. Streets are plotted but no roads exist to this property. It is undeveloped. Buy now, develop later or now. POI zoning allows for high density housing. Buyer to check with City of Florence for all acceptable uses with POI zoning. **\$199,000 #12212 MLS#21090118**



HADSALL CREEK RD
Enjoy the sound of Hadsall Creek from this great .65 acre lot with septic approval and well installed. Build a small getaway cabin or enjoy as a camping escape. Just a few minutes to Mapleton and less than 30 minutes to Florence and the Oregon Coast. **\$75,000 #12181 MLS#21156591**



BONNETT WAY #31
Great corner lot in Fawn Ridge West, a gated community of beautiful upscale homes. All city services are there! Possible 2nd story ocean view. Come build your dream house in beautiful Florence on the coast. **\$110,000 #12146 MLS#21147296**



BOOTH ISLAND TAX LOTS
00300,01700,02200
TWO SILTCOOS LAKEFRONT ISLAND PARCELS! Siltcoos Lake is the largest lake on the Oregon coast. It has an outlet to the ocean & the fishing is great. These two parcels are on Booth Island & offer a unique & extremely rare opportunity to enjoy the 'island life'. There are currently several homes on the island, some off grid & others with solar and backup generators. Each of these parcels total over 1/2 acre. Priced at \$59,500 and \$64,900. Boat access only. **\$64,900 #12145 MLS#21096547**



LEVAGE DRIVE
Come see the opportunities to be steps away from Sutton Lake yet close to town. This lot is raw land with lush green and wooded views. Filtered lake views may be possible with clearing at the top. Come build your dream home or enjoy your own forest. **\$25,000 #11916 MLS#19475920**



ACREAGE AT HIGHWAY 101 & TAYLOR ROAD
PRIME HIGHWAY 101 frontage with residential zoning - allowing for a wide variety of uses - home, shop, manufactured OK. Close to town corner lot. Wooded & private. Legal lot verification & survey completed. **\$145,900 #11765 MLS#18522645**



OCEAN & CITY VIEWS
Ocean & city views in gated community. Spectacular views from Rhododendron Dunes. Buildable lot in an upscale area. Very private with sunsets over the Pacific. Close to Ocean Dunes Golf Course. **\$25,000 #10283 MLS#11661214**



ANDY JOHNSON
Principal
Broker/Owner



ALICE SICHTING-BURNS
Broker



ALVA BRACEY
Broker



ARIC SNEDDON
Broker



DANI FLESCHER
Broker



DENNIS PEASE
Principal
Broker



RICK COX
Broker



SHIRLEY HUNT
Principal
Broker



DIANA HACKETT
Broker



JERILYN McCULLOUGH
Broker



JOHN BARNETT
Broker



LYNNETTE WIKSTROM
Broker



MISSY JOHNSON
Broker



PAMELA YARBROUGH
Principal Broker



RANDY PAREDES
Broker



SADIE WARD
Broker



MIKE & WANDA JOHNSON
Brokers