



**COLDWELL
BANKER**
COAST REAL ESTATE

541-997-7777

Servicing Florence Since 1956



FEATURED NEW LISTINGS, PRICE REDUCTIONS & UPDATES FOR THE WEEK OF JULY 28, 2021



NEW
89310 LEVAGE DRIVE
This private wooded lake area home has a functional floor plan for the busy family! There is open living in the kitchen area with a small family room and a large separate living room/dining area. Don't forget to look at the En-Suite bath with a custom shower, heated floors and a roomy walk in closet. The home has a large remodeled sunroom to relax, use as a home office or set up your Dog/Cat-O-Minium. This relaxing and peaceful setting is just a minutes away from Sutton Lake by foot. **\$449,999** #12223 MLS#21600283



NEW
35460 PINWOOD WAY, NEHALEM
Come see this quiet and clean home with an open floor plan. This home is so cozy, yet roomy with a family room and a great room with living and dining. A large Tuff Shed included in the backyard and brand new composite decking. Enjoy fishing, kayaking and boating as this home is minutes away from Nehalem Bay Boat Launch. **\$350,000** #12224 MLS#21248149



87945 LAKE POINT DRIVE
Custom built 3 bed and 2 1/2 bath home plus den. Laminated flooring in great room, dining, kitchen, and den. Berber carpet in bedrooms. Kitchen with Corian counters, eating bar w/pendant lighting, WI pantry, master w/15' ceilings; "his" and "hers" vanity areas & WI closets, several built-in cabinets & drawers. 3 car finished & insulated garage with built-in storage. Front yard beautifully landscaped with river rock - no bark **\$685,000** #12216 MLS#21321936



83 MANZANITA
Great getaway spot nestled in the trees and natural vegetation. Large patio/deck area with small storage shed. All items in travel trailer are included. Small seasonal creek alongside and back of lot prevent permanent structure. Trailer covered by ramada. **\$98,500** #12205 MLS#21281253



REDUCED
3561 JAKE MANN LANE
Nice views of the ocean, river, Old Town District & golf course. Watch fireworks from your back deck. One owner custom built 2007 home. Open floorplan w/vaulted ceilings, skylights. Great room, fireplace, hickory flooring. Gourmet kitchen: gas stovetop, dbl ovens, Corian counters. Master suite: Lg view window, vaulted ceiling, jetted tub & walk-in shower with private deck access. Additional upper suite. Lower level has a media rm, bedroom, full bath. Oversized 4 car garage. Don't miss this one! **\$669,000** #12184 MLS#21235686



83764 CLEAR LAKE RD
WOAHINK LAKEFRONT RANCH: Surround yourself w/ unrivaled privacy on crown jewel of Woahink's Summerbell Arm. Unique 30-acre ranch property available for first time in 60 years. 3400 SF 2-story mid-century modern home, custom-designed to sustain family of 8, sits in park-like setting. Brimming w/ vertical grain cabinetry, built-in storage, & lake views from every room. 1300 SF guest home up the lane. The history of the ranch lives on in 2 barns & 3 fenced pastures. Once-in-a-lifetime opportunity. **\$1,794,000** #12183 MLS#21202774



83879 HIGHWAY 101
Pristine Woahink Lakefront home w/easy lake access and new boat dock. Warm and inviting home w/ well thought out floor plan. Spacious living room w/ propane fireplace, slider to deck. Kitchen is designed to please any cook w/ custom cabinets, tile counters, gas cook top. Primary suite has a large closet, two person tub, and shower. Custom hardwood floors, vaulted ceilings and a custom gas masonry fireplace in the living room. Significant recent updating! Don't pass up this pristine home. **\$699,000** #12182 MLS#21612624



REDUCED
209 RHODY LOOP
This is a unique property with a spacious addition of 2 large rooms and a utility room. There is a private, fenced patio area with an outdoor fireplace and a storage shed. \$25.00 transfer fee to be paid by buyer at close of escrow. **\$145,000** #12155 MLS#21432860



86 OUTER DRIVE
This property is a low care lot with a park model travel trailer complete with addition & carport plus workshop/storage shed. New paint on exterior - lots of plus features. \$25.00 transfer fee to buyer at close of escrow. **\$150,000** #12001 MLS#20008495



1339 RHODODENDRON
Beautifully re-furnished commercial/retail building with warehouse storage space. Conveniently located 1 block off Hwy 101. Front 1/2 of building has modernized reception area and offices. Back 1/2 of building is storage/shop/warehouse space and bathroom. Wide variety of uses with Main Street B zoning. Paved parking. Move-in ready. Shown by appointment only. **\$225,000** #12171 MLS#21637589



131 HWY 101 YACHATS
Come live the coastal dream in Yachats Oregon! Ona Restaurant and Lounge is a profitable, upscale turn-key restaurant that opened in October 2010. This well-established restaurant menu features coastal cuisine that is globally inspired and locally sourced. Craft cocktails and small vineyard, boutique northwest wines. Fine dining with a relaxed, family friendly atmosphere is enhanced by a dining room and heated patio that overlooks the Yachats River and Pacific Ocean. **\$325,000** + Inventory #11939 MLS#19590284



NEW
TL#1800 SHORE CREST DR
Don't pass up this great opportunity to build on this nice wooded lot with utilities at the street. This is a nice private setting just minutes to Old Town, the beach and Sutton Lake is just around the corner. Great lot with mature timber and ready to develop. **\$64,000** #12221 MLS#21231622



NEW
TL#1900 SHORE CREST DR
Don't pass up this great opportunity to build on this nice wooded lot with utilities at the street. This is a nice private setting just minutes to Old Town, the beach and Sutton Lake is just around the corner. Great lot with mature timber and ready to develop. **\$62,000** #12222 MLS#21644765



823 ROCK CREEK RD, IDLEYLD PARK, OR.
Great corner lot sits just above the fish hatchery & nearby Rock Creek. Located close to the outdoor recreation and fishing of the North Umpqua River. Well and septic are on site. Spring water still flowing, as well as, water source for the pond. Partially developed building site. Buyer to perform due diligence. **\$125,000** #12113 MLS#21255658



7TH STREET TAX LOT #2400
Future development opportunities. Streets are platted but no roads exist to this property. It is undeveloped. Buy now, develop later or now. POI zoning allows for high density housing. Buyer to check with City of Florence for all acceptable uses with POI zoning. **\$199,000** #12212 MLS#21090118



HEMLOCK STREET TL 00501
Great private lot. Have your own personal camp site on the coast. Buyer to their own due diligence with Lane County. **\$25,000** #12201 MLS#21439178



SAUTER DRIVE #13
Beautiful and large home site inside gated Sunset Cove. Incredible lake views! Private and quiet neighborhood, with only 15 home sites, and a community boat dock. Plenty of space to stretch out and enjoy your view of Woahink Lake! Lots of space for fishing, and you are close to the ocean, an absolutely awesome spot to build your home! Come and see! **\$219,000** #12188 MLS#21357148



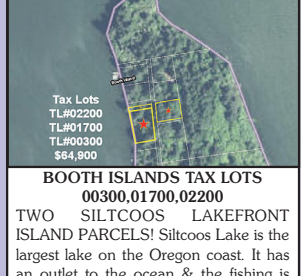
HADSALL CREEK RD
Enjoy the sound of Hadsall Creek from this great .65 acre lot with septic approval and well installed. Build a small getaway cabin or enjoy as a camping escape. Just a few miles to Mapleton and less than 30 minutes to Florence and the Oregon Coast. **\$75,000** #12181 MLS#21156591



TL2600 22ND ST
Rare and coveted 65x120 multi-family zoned lot in the heart of the city. Build your next project here! HR (High Density Residential) Zoning in-fill lot-conveniently close to everything: bank, shopping, dining. No others like it currently available. Duplex, tri-plex?? Check with city for permitted multi-family uses. **\$98,500** #12167 MLS#21337692



BONNETT WAY #31
Great corner lot in Fawn Ridge West, a gated community of beautiful upscale homes. All city services are there! Possible 2nd story ocean view. Come build your dream home in beautiful Florence on the coast. **\$110,000** #12146 MLS#21147296



BOOTH ISLANDS TAX LOTS
TWO SILTCOOS LAKEFRONT ISLAND PARCELS! Siltcoos Lake is the largest lake on the Oregon coast. It has an outlet to the ocean & the fishing is great. These two parcels are on Booth Island & offer a unique & extremely rare opportunity to enjoy the 'island life'. There are currently several homes on the island, some off grid & others with solar and backup generators. Each of these parcels total over 1/2 acre. Priced at \$59,500 and \$64,900. Boat access only. **\$64,900** #12145 MLS#21096547



1601 RHODODENDRON DR #548
Rare opportunity to place your dream home on one of the last available lots in this great 55+ gated community. Vacation now, retire later, or start living your dreams. Located on a cul-de-sac at end of River Vista Drive, this 0.54-acre lot has potential distant river/ocean views. Don't miss this unique opportunity for affordable living on the Oregon coast. Amenities include a clubhouse, tennis & bocce ball courts, jacuzzi, sauna & outdoor pool. Close to medical facilities, library, shopping & Old Town. **\$88,000** #12136 MLS#21513355



SHORE CREST DRIVE TL#7200
Don't pass up this great opportunity to build on this nice wooded lot with utilities at the street. This is a nice private setting just minutes to town and the beach and Sutton Lake is just around the corner. Affordably priced and ready to go! **\$49,995** #12122 MLS#20243616



HWY 101 LOT
4.9 acres zoned Commercial. Site anchored by Fred Meyer to the south and new multi-use area to the east, south of Munsell Lake Road. Rapidly growing area. Seller will pay the assessment for City Sewer of over \$50,000 at the close of escrow. **\$675,000** #12064 MLS#20334463



ACREAGE AT HIGHWAY 101 & TAYLOR ROAD
PRIME HIGHWAY 101 frontage with residential zoning - allowing for a wide variety of uses - home, shop, manufactured OK. Close to town corner lot. Wooded & private. Legal lot verification & survey completed. **\$145,900** #11765 MLS#18522645



ANDY JOHNSON
Principal Broker/Owner



ALICE SIGHTING-BURNS
Broker



ALVA BRACEY
Broker



ARIC SNEDDON
Broker



DANI FLESCHER
Broker



DENNIS PEASE
Principal Broker



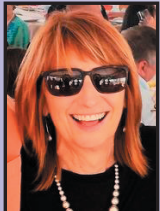
RICK COX
Broker



SHIRLEY HUNT
Principal Broker



DIANA HACKETT
Broker



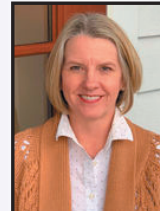
JERILYN McCULLOUGH
Broker



JOHN BARNETT
Broker



LYNNETTE WIKSTROM
Broker



MISSY JOHNSON
Broker



PAMELA YARBROUGH
Principal Broker



RANDY PAREDES
Broker



SADIE WARD
Broker



MIKE & WANDA JOHNSON
Brokers