



"We're next to the Bridge"
100 Hwy. 101, Florence, OR



**COLDWELL
BANKER**
COAST REAL ESTATE

541-997-7777

Servicing Florence Since 1956

FEATURED NEW LISTINGS, PRICE REDUCTIONS & UPDATES FOR THE WEEK OF MAY 19, 2021



NEW
83879 HIGHWAY 101
Pristine Woahink Lakefront home w/easy lake access and new boat dock. Warm and inviting home w/ well thought out floor plan. Spacious living room w/ propane fireplace, slider to deck. Kitchen is designed to please any cook w/ custom cabinets, tile counters, gas cook top. Primary suite has a large closet, two person tub, and shower. Custom hardwood floors, vaulted ceilings and a custom gas masonry fireplace in the living room. Significant recent updating! Don't pass up this pristine home. **\$725,000** #12182 MLS#21612624



REDUCED
4615 JOSHUA LANE
NW Contemporary beach home. Easy walk to beach or dunes. Unbuildable football sized field of green behind house provides wonderful privacy. Pie-shaped ocean view from main level w/ 3 BD, 2 BA, open concept kitchen, dining & living area that center around propane fireplace. Downstairs guest quarters- full bath, kitchenette, slider to the front patio and garden & door out back to hot tub. Zoned radiant floor heating. Oversized garage. RV/ Boat garage. Owners selling adjacent cottage. MLS#21472496. **\$697,000** #12177 MLS#21436870



NEW
4621 JOSHUA LANE
THIS BEACH COTTAGE IS PERFECT! Priced to sell! Short walk to beach, wind protected and tucked off the street for privacy, this cute "tiny home design" cottage has been fully remodeled with explosions of beach colors, on demand hot water, fully furnished, pellet stove, quartz countertops and wrap around deck that is perfect for entertaining. The ocean, singing birds and evening frogs truly make this cottage a magical little sanctuary. **\$310,000** #12178 MLS#21472496



REDUCED
2235 10TH STREET
Rare 4 bedroom, 3 bath home with 2348 SF. This custom built home has chalet features with vaulted ceilings, exposed beams and extensive cedar accents in the living and dining area. Floor to ceiling custom masonry fireplace. Bright kitchen area with open floor plan design features a large island and high end custom appliances. Oversized garage, covered patio, fence dog run with RV/Boat Parking too. Top of the hill with river views. Don't pass this beautiful home up! **\$510,900** #12163 MLS#21496104



1312 BAY STREET
Historic Riverfront. This is a very rare opportunity to own a piece of historic Old Town. Commercial leased retail space main floor with two exceptional upstairs fully managed rentals. Located right on the river and boasting the best river/bay and bridge views. Very flexible opportunity for owner enjoyment and income producing. Must contact listing broker for information and limited access. **\$695,000** #12164 MLS#21001690



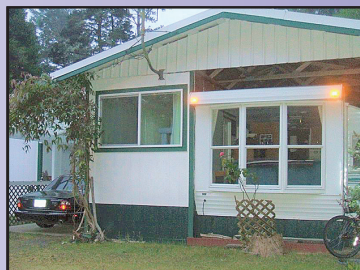
1304/1308 BAY STREET
1304/1308 BAY ST RIVERFRONT COMMERCIAL BUILDING. This is a very rare offering. Leased riverfront retail commercial downstairs and a wonderful upstairs managed vacation rental. Built in 1920 and known as the "Lockers" this is a stunning affordable and exciting income opportunity in the center of Bay Street. Expansive river/bay and bridge view...this is the rarest of rare. Enjoy the income or use the upstairs for your own enjoyment...better than owning a condo! Must have appointment as access is limited. **\$569,000** #12165 MLS#21369818



209 RHODY LOOP
This is a unique property with a spacious addition of 2 large rooms and a utility room. There is a private, fenced patio area with an outdoor fireplace and a storage shed. \$25.00 transfer fee to be paid by buyer at close of escrow. **\$165,000** #12155 MLS#21432860



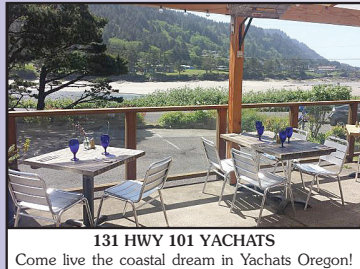
88510 N HWY 101
This is a home that is in need of some attention but has great potential. This is a 1424 SF manufactured home with three bedrooms and two bathrooms and a large living room. Home in process of getting new carpet in two bedrooms, new flooring in kitchen and master bathroom. Oversized two car garage and an older site built home that is used as a shop. This .71 acre site is very large with abundance of potential. Come take a look and bring your ideas. **\$249,000** #12153 MLS#21035413



86 OUTER DRIVE
This property is a low care lot with a park model travel trailer complete with addition & carport plus workshop/storage shed. New paint on exterior - lots of plus features. \$25.00 transfer fee to buyer at close of escrow. **\$150,000** #12001 MLS#2008495



1339 RHODODENDRON
Beautifully re-furnished commercial/retail building with warehouse storage space. Conveniently located 1 block off Hwy 101. Front 1/2 of building has modernized reception area and offices. Back 1/2 of building is storage/shop/warehouse space and bathroom. Wide variety of uses with Main Street B zoning. Paved parking. Move-in ready. Shown by appointment only. **\$225,000** #12171 MLS#21637589



131 HWY 101 YACHATS
Come live the coastal dream in Yachats Oregon! Ona Restaurant and Lounge is a profitable, upscale turn-key restaurant that opened in October 2010. This well-established restaurant menu features coastal cuisine that is globally inspired and locally sourced. Craft cocktails and small vineyard, boutique northwest wines. Fine dining with a relaxed, family friendly atmosphere is enhanced by a dining room and heated patio that overlooks the Yachats River and Pacific Ocean. **\$325,000** + Inventory #11939 MLS#19590284



REAL ESTATE ONLY
85150 HWY 101
This building has been home to a great family business that has been owned by the same owner for 20 years. Great building with lots of upgrades, roof, awning, ductless heat pump and CCTV system. The business is listed separately under MLS#20036014. **\$350,000** #11865-A MLS#19563227



BUSINESS OPPORTUNITY
85150 HWY 101
A great family grocery business that has been owned by the same owner for 20 years. This is not a franchise. A great opportunity for a fun profitable turn-key business. This will be sold with building & land. See MLS#19563227. Separate wood business can be purchased with the store. (See LA for information) **\$100,000** #11865-B MLS#20036014



TAKHENITCH LAKE
FLOATING HOME! Easy access to the lake, marina and boat launch. Beautiful, stunning views all around; a unique opportunity. Private setting. Fun, useful amenities throughout the home. Fish from your living room! Great weekend get-away! **\$89,900** #11700 MLS#18209847



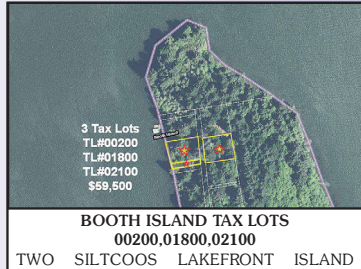
NEW
HADSALL CREEK RD
Enjoy the sound of Hadsall Creek from this great .65 acre lot with septic approval and well installed. Build a small getaway cabin or enjoy as a camping escape. Just a few miles to Mapleton and less than 30 minutes to Florence and the Oregon Coast. **\$75,000** #12181 MLS#21156591



TL2600 22ND ST
Rare and coveted 65x120 multi-family zoned lot in the heart of the city. Build your next project here! HR (High Density Residential) Zoning in-fill lot-conveniently close to everything: bank, shopping, dining. No others like it currently available. Duplex, tri-plex?? Check with city for permitted multi-family uses. **\$109,900** #12167 MLS#21337692



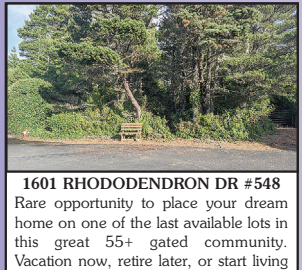
BONNET WAY #31
Great corner lot in Fawn Ridge West, a gated community of beautiful upscale homes. All city services are there! Possible 2nd story ocean view. Come build your dream house in beautiful Florence on the coast. **\$110,000** #12146 MLS#21147296



BOOTH ISLAND TAX LOTS
00200,01800,02100
TWO SILTCOOS LAKEFRONT ISLAND PARCELS! Siltcoos Lake is the largest lake on the Oregon coast. It has an outlet to the ocean & the fishing is great. These two parcels are on Booth Island & offer a unique & extremely rare opportunity to enjoy the 'island life'. There are currently several homes on the island, some off grid & others with solar and backup generators. Each of these parcels total over 1/2 acre. Priced at \$59,500 and \$64,900. Boat access only. **\$59,500** #12144 MLS#21496408



BOOTH ISLANDS TAX LOTS
00300,01700,02200
TWO SILTCOOS LAKEFRONT ISLAND PARCELS! Siltcoos Lake is the largest lake on the Oregon coast. It has an outlet to the ocean & the fishing is great. These two parcels are on Booth Island & offer a unique & extremely rare opportunity to enjoy the 'island life'. There are currently several homes on the island, some off grid & others with solar and backup generators. Each of these parcels total over 1/2 acre. Priced at \$59,500 and \$64,900. Boat access only. **\$64,900** #12145 MLS#21096547



1601 RHODODENDRON DR #548
Rare opportunity to place your dream home on one of the last available lots in this great 55+ gated community. Vacation now, retire later, or start living your dreams. Located on a cul-de-sac at end of River Vista Drive, this 0.54-acre lot has potential distant river/ocean views. Don't miss this unique opportunity for affordable living on the Oregon coast. Amenities include a clubhouse, tennis & bocce ball courts, jacuzzi, sauna & outdoor pool. Close to medical facilities, library, shopping & Old Town. **\$88,000** #12136 MLS#21513355



HWY 101 LOT
4.9 acres zoned Commercial. Site anchored by Fred Meyer to the south and new multi-use area to the east, south of Munsell Lake Road. Rapidly growing area. Seller will pay the assessment for City Sewer of over \$50,000 at the close of escrow. **\$675,000** #12064 MLS#20334463



LEVERAGE DRIVE
Come see the opportunities to be steps away from Sutton Lake yet close to town. This lot is raw land with lush green and wooded views. Filtered lake views may be possible with clearing at the top. Come build your dream home or enjoy your own forest. **\$25,000** #11916 MLS#19475920



LITTLE WOAHINK LOT 119
This peaceful & serene 1.01 acres Little Woahink Lakefront lot is located on a secluded and private dead-end road. Build your dream home among the trees. Septic approval is in the file. Walk the access trail from the road to the lake to view this one of a kind lot. **\$144,900** #11859 MLS#19669674



ACREAGE AT HIGHWAY 101 & TAYLOR ROAD
PRIME HIGHWAY 101 frontage with residential zoning - allowing for a wide variety of uses - home, shop, manufacture OK. Close to town corner lot. Wooded & private. Legal lot verification & survey completed. **\$145,900** #11765 MLS#18522645



BOOTH ISLAND
Booth Island, a pristine island in Siltcoos Lake, located south of Florence. This is the ultimate island retreat. Green & solar! Private location, just minutes to the ocean, rivers & dunes. Invest now in waterfront property at lower prices and consider building later. **\$124,000** #9676 MLS#20682793



ANDY JOHNSON
Principal
Broker/Owner



ALICE SIGHTING-BURNS
Broker



ALVA BRACEY
Broker



ARIC SNEDDON
Broker



DANI FLESCHER
Broker



DENNIS PEASE
Principal
Broker



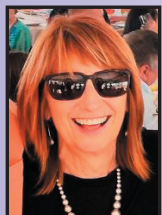
RICK COX
Broker



SHIRLEY HUNT
Principal
Broker



DIANA HACKETT
Broker



JERILYN McCULLOUGH
Broker



JOHN BARNETT
Broker



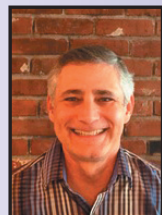
LYNNETTE WIKSTROM
Broker



MISSY JOHNSON
Broker



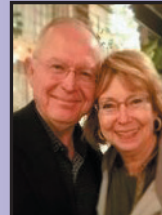
PAMELA YARBROUGH
Principal Broker



RANDY PAREDES
Broker



SADIE WARD
Broker



MIKE & WANDA JOHNSON
Brokers