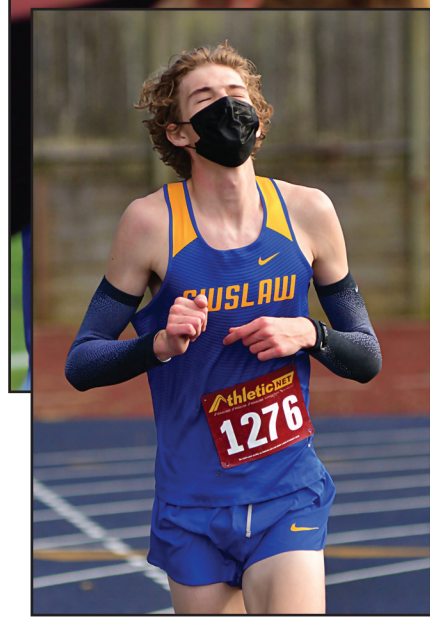


Siuslaw sweeps Sky-Em titles



PHOTOS BY NED HICKSON/SIUSLAW NEWS
Siuslaw High School took both Sky-Em League cross country titles Thursday, with Chad Hughes (left) winning the individual title as well for the boys, and Rylee Colton (right) taking second overall for the Lady Vikings. Look for the full story in this Wednesday's edition of the Siuslaw News.

Siuslaw News
 Sports & Leisure

Sports Calendar

April 3
 • MHS Volleyball at Mohawk 12:30 pm

April 6
 • MHS volleyball hosts Eddyville 6 pm
 • MHS Football at Perrydale 7 pm

April 9
 • MHS Football hosts Falls City 7 pm

Spring Openers:
April 13
 • SHS Baseball at C. Grove 5 pm
 • SHS Track JV Inv. at SHS 3:30 pm

Lady Viks sink Pirates, cage Lions to end season

BY ZEAHNA YOUNG
 SIUSLAW NEWS

Junction City d Siuslaw: 25-10, 25-19, 25-23
Siuslaw d Marshfield: 25-20, 19-25, 27-25, 25-16
Siuslaw d Cottage Grove: 23-25, 25-22, 25-21, 27-25

This week, Siuslaw's volleyball team faced an unusual three-game week for its final competitions of the season. On Tuesday (March 30), the Lady Vikings hosted Junction City, which was tied for first place with Cottage Grove. The Tigers were able to come away with a win in three sets, although Siuslaw put up a solid fight.

Then on Wednesday, the girls hosted Marshfield for a rescheduled rematch. Their first win against Marshfield a week earlier was the first win against the Pirates in several years, so the team went into Wednesday's rematch feeling confident.

"That was one of the better games we've played," said coach Ashlee Cole. "In terms of



NED HICKSON/SIUSLAW NEWS
The Lady Vikings celebrate after defeating Cottage Grove in four sets Thursday night.

See VIKS 2B

Lady Sailors head into final week

BY ZEAHNA YOUNG
 SIUSLAW NEWS

Crow d Mapleton: 25-14, 25-14, 25-9
Crow d Mapleton: 25-10, 25-16, 25-5

Tuesday (March 30), Mapleton volleyball hosted Crow for a match that began with the Lady Sailors honoring its three seniors, which included Briena Jensen, Emily Stevens and Heather Wierichs. The girls were supported by their families and loved ones, sharing their most memorable and cherished moments as volleyball players for the Sailors.

Mapleton put in an incredible effort in the match. However, an injury at the end of the first set put the Sailors at a major disadvantage that helped the Cougars come out with the win in three straight sets.

"I think we were thrown a lot of adversity today," said coach Molly Dooley. "And I think that the girls played through it as best they could."

In the first set, the Sailors were finding their footing on the court. They had some great serving from Jensen to push them along. Unfortunately, by the time the score had reached



ZEAHNA YOUNG/SIUSLAW NEWS
Mapleton senior Heather Wierichs gets a bump for the Lady Sailors.

13-20 with the Cougars ahead, Jensen took a fall, injuring her ankle and forcing her to be helped off of the court.

See SAILORS 3B

ODFW REGIONAL FISHING REPORT

www.dfw.state.or.us/RR

Lakes, Ponds, Reservoirs:

Mid-coast lakes were stocked the first couple weeks of February. The lakes that have been stocked include: Cleawox, Munsel, Lost, Carter, Dune and Alder lakes. All these lakes are full of trout and are scheduled to be stocked again in March. Additional lakes are being stocked during the first two weeks of March: Siltcoos, Lost, Woahink and Mercer lakes.

SIUSLAW RIVER: Winter steelhead

Winter steelhead fishing continues to be slow on the Siuslaw. The river is now low and clear making it tougher to catch these fish, but there are still some fish being caught. The Siuslaw typically peaks in February and starts to slow down in March. Whitaker Creek area is the best place to catch returning hatchery fish.

Hatchery fish are also planted in Lake Creek and are released into Green Creek. These returning hatchery fish will start to show up in December and peak in January and February.

ALSEA RIVER: Winter steelhead

Winter steelhead fishing continues to be slow on the Alsea. The river is now low and clear making it tough for the bank anglers on the NF Alsea but conditions are good for the drift boaters in the mainstem. Although it has been a slow year there are still fish to be caught in the system through the month of March. The later returning wild broodstock fish are providing the

See FISHING 3B

Tide Tables

Entrance Siuslaw River

High Tide	Low Tide
April 3 4:35am / 7.6 6:36pm / 5.6	11:51am / -0.3 11:41pm / 3.5

April 4 5:39am / 7.1 8:00pm / 5.6	1:03pm / 0.1
--	--------------

April 5 6:56am / 6.7 9:14pm / 5.8	1:07am / 3.6 2:17pm / 0.2
--	------------------------------

April 6 8:17am / 6.5 10:10pm / 6.0	2:36am / 3.4 3:25pm / 0.3
---	------------------------------

April 7 9:29am / 6.5 10:53pm / 6.4	3:49am / 2.9 4:20pm / 0.3
---	------------------------------

April 8 10:30am / 6.6 11:29pm / 6.7	4:45am / 2.2 5:06pm / 0.3
--	------------------------------

April 9 11:22am / 6.6	5:31am / 1.5 5:45pm / 0.5
---------------------------------	------------------------------

Florence Heating & SHEET METAL, INC.
 "Your Local Independent Trane Dealer"

- Heating Systems
- Heat Pumps
- Sales / Service
- Ductless Heat Pumps

TRANE
 It's Hard To Stop A Trane.
 Hours
 M-F, 8am-4pm



(L-R) Matteo Coccio, Owners Krystal & Steve Wolford, Trinkia Griffin

Florence's Oldest & Largest Heating Contractor

1645 Kingwood ~ Florence • www.trane.com
(541) 997-2422