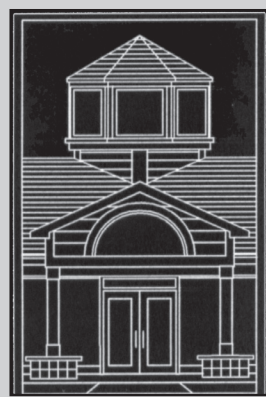


**SIUSLAW NEWS:
A LOOK BACK AT 130 YEARS**

INSIDE — A7



Library Tidings

INSIDE — A7

**Florence
officially has
18 cases of
COVID-19**

*Businesses reopen
after testing,
deep cleaning*

By MARK BRENNAN
SIUSLAW NEWS

The COVID pandemic has clearly arrived in Florence. Multiple businesses have closed in the past week as a result of COVID-19 exposure concerns and to test employees for the virus, including Dutch Bros., Hukilau, Lovejoy's, Nosh and 1285 Restobar. As of today, all have reopened.

The rolling effect of COVID-19 through the local food service industry in particular has prompted restaurant owners to respond out of concern for both the public and employees — and avoid the need for a longer shutdown as Florence cycles through the summer tourist season and Phase Two of the state's reopening.

There is currently no vaccine for COVID-19 and testing of individuals exhibiting symptoms is the only way to determine who has been infected. The need to identify, test and — if a positive test is confirmed — isolate infected individuals remains the best mitigation protocol health experts have been able to offer the public at this point in the pandemic.

As of press time on July 28, the latest data posted by the Oregon Health Authority (OHA) reported 17,088 confirmed cases of COVID-19, with statewide deaths at totaling 289.

The OHA also reported that "at least 381,718 tests have been performed."

See PANDEMIC page 6A



**Maintaining
the crane**

MARK BRENNAN/SIUSLAW NEWS

Inspectors from the State of Oregon were in town on Monday to check the status of the Port of Siuslaw's North Pacific SWL 2500 Crane, located between ICM and MO's restaurants. The crane is used to load and unload fish, crab and equipment from the small fishing fleet that operates out of Florence. According to port employee Jason Wagner, who put the crane through a series of maneuvers to show its operational capabilities, the crane passed its annual inspection. No issues were noted.

Fire, EMS boards determine leadership, discuss strategic planning

By JARED ANDERSON
SIUSLAW NEWS

Siuslaw Valley Fire and Rescue (SVFR), Western Lane Ambulance District (WLAD) and Western Lane Fire and EMS Authority (WLFEA) held their monthly joining meeting last Thursday, where board members chose new leadership and discussed wildfire season, COVID-19 and the beginning of workshops to bring final resolution to complicated issues, such as exploring the pros and cons of potentially merging districts some day and how each district operates — now and into the future as part of strategic planning.

The meeting began with boards choosing officers. For WLAD, John Murphey was chosen as president, Cindy Russel vice president and Mike Webb as treasurer.

For SVFR, Ned Hickson retained

his position as president, Jim Palisi was chosen as vice president and Sam Spayd as treasurer.

For WLFEA, which is the administrative branch of both SVFR and WLAD with two representatives from each district comprising its board, John Murphey was chosen as president, Sam Spayd as vice president and Russel as treasurer.

During the meeting, the financials for both districts were briefly discussed, leading WLAD board member Mike Webb to praise the work of staff.

"I want to give a big pat on the back for both [Operations Chief Matt House] and [Office Manager Dina McClure] for getting control of wages and expenses — and particularly overtime — this year," Webb said.

WLAD board member Larry Farnsworth, who had been working

with McClure on reports, agreed, stating, "And the financials look better each month."

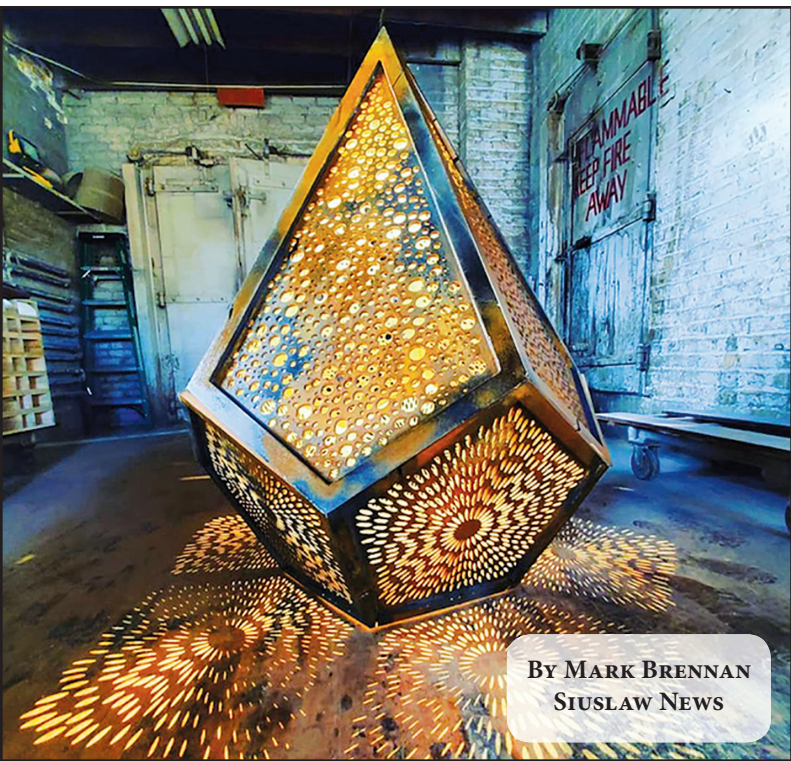
SVFR and WLAD Chief Michael Schick then opened discussion on three planned public workshops, the first being an examination of PERS (Public Employees Retirement System).

Previously, the boards heard from a representative of Lane Council of Governments on the program, "but we've become a lot more intelligent about what PERS is, and what it can and can't do," Schick said. "We'd like to have her come back to ask more questions."

The second workshop would be the long-discussed strategic plan for both districts. These plans would cover many of the issues that both boards have been discussing in recent months — compensation for

See FIRE/EMS page 6A

New art to be 'exposed' in Historic Old Town



By MARK BRENNAN
SIUSLAW NEWS

COURTESY PHOTO

"The Rusted Spire" by Christopher Knight will be on display at the edge of the Siuslaw River Interpretive Center on Bay Street in Historic Old Town Florence as part of "Art Exposed."

*Public Art Committee selects next round
for 'Art Exposed' Rotating Gallery*

The City of Florence Public Art Committee (PAC) met via teleconference for its July meeting on Monday at 5:30 p.m. There was renewed energy among the committee since its numbers were bolstered by new members, who joined at the beginning of the year.

Committee Chairperson Harlen Springer opened the meeting and introduced City Recorder and Economic Development Coordinator Kelli Weese, who reviewed with the committee the COVID-19 protocols which have been mandated by the state and put in place by city staff.

These protocols can be viewed on the city's website to delineate the process for different levels of public participation during City of Florence public meetings moving forward.

The recent history of public art in Florence has been at times volatile,

prompting changes in PAC membership, a publicly viewed conflict between council members, and a termination of funding for public art from the Florence Urban Renewal Agency.

The public was highly engaged in the later stages of PAC's selection of the mural located on the Central Lincoln PUD Building at Spruce Street and Highway 126, necessitating that the final meeting be moved to the Florence Events Center to accommodate the large crowd.

For some community members, criticism was not only aimed at the art selected for the mural, but also the process which led to its selection. Ultimately, the mural was installed, with a decision being made to hold PAC meetings at a time more conducive to public participation and transparency.

See ART page 5A

Siuslaw News
NEWS &
VIEWS THAT
DEFINE OUR
COMMUNITY
VOL. 130, NO. 60
FLORENCE, OREGON

WEATHER



Sunny with a high of 67 and a low tonight of 48.
Full forecast on A3

COMMUNITY



OCHS celebrates
National Mutt Day
INSIDE — A3

LIFESTYLE



SVFR Battalion
Chief retires
INSIDE — B

RECORDS
Obituaries &
response logs
Inside — A2

NEW: TV GUIDE
Inside — B3-B4

KIDS CORNER
Activities for kids
Inside — B5

CLASSIFIEDS
Listings and notices
Inside — B6

FOLLOW US FOR THE
LATEST NEWS:



/SIUSLAWNEWS



@SIUSLAWNEWS

THE SIUSLAWNEWS.COM

2 SECTIONS | 18 PAGES

COPYRIGHT 2020

SIUSLAW NEWS

0 88267 02345 1

1

WATERFRONT HOMES FOR SALE...LAKES, RIVERS & OCEAN

<p>OCEANFRONT</p> <p>UNOBSTRUCTED VIEWS COTTAGE ON THE BEACH! Essentially an oceanfront cottage with nothing but public land between you & the beach. Absolutely astounding, unobstructed views and access. This is as good as it gets and with a price like this it will soon be a distant memory. 1+ bedroom, 2 bath, fully furnished. HURRY! \$498,000 #12027 MLS#20615307</p>	<p>RIVERFRONT</p> <p>RARE MOVE-IN READY HOME ON THE RIVER Front row river's edge panoramic vistas. Quiet, dead-end, low traffic cul-de-sac with convenient in-town location and city services. West wall of windows to take in the sights, sounds, and action along the river: boats, and wildlife. 1 level living w/ huge master suite, cozy woodstove, and tons of built-ins. River-side deck w/ access to a sandy beach and river below. Rare move-in home right on the river in town w/ a sandy beach! \$889,500 #12035 MLS#20055938</p>	<p>LAKEFRONT</p> <p>WOAHINK LAKEFRONT Your lakefront dreams have come true. This private, single level home is truly lake level with panoramic west facing views. Just steps from your back deck, enjoy the sunset from your private dock recently redone & tucked away in a small cove. This 4 bedroom, 2 bath home sits on over 1/2 acre and has been well maintained over seller's nearly 50 years of ownership. These lake level lots are few & far between so bring your vision & make this home your own. \$649,900 #11967 MLS#20104738</p>	<p>LAKEFRONT</p> <p>PRIVATE RETREAT...COULD BE INCOME PRODUCING. This peninsula location is fantastic! Gated, private setting. Unblemished, w/nd protected southern view. Sutton Lakefront with over 3.5 acres of lush landscaping. Classic Tudor home with 4 BR, 3 BA & 2,784 sq. ft. Large, detached garage & shop. Potential income with guest house on property. This is the prior home of Kathryn Davis, watercolor, oils & impressionist painter & The Quiet Waters Gallery. \$980,000 #11924 MLS#19542908</p>	<p>RIVERFRONT</p> <p>DEEPWATER RIVERFRONT CUSTOM HOME IN MAPLETON Boat all the way to the ocean for fishing and recreation! Registered dock. Beautiful, site-designed home built in 1996 with views from every room. Engineered & built above the 100 year flood plain. Brand new roof in 2016, heat pump, water heater & appliances. Expansive parking including 40' covered RV parking with full hook-ups. 4 car pull-thru garage. 14 X 14 gazebo with hot tub. Full length river-side decking. \$499,900 #11408 MLS#17066029</p>
---	--	---	--	---



COAST REAL ESTATE
541-997-7777

"We're next to the Bridge"
100 Hwy. 101
See all Florence Listings at cbcoast.com

