

On The Record

AMBULANCE/FIRE

Western Lane Ambulance District and Siuslaw Valley Fire & Rescue Ambulance and fire call runs Nov. 4-8

Date	Time	Area	Type	11/6/19	11:39	9th St	Transport to PHH
11/4/19	3:13	Indian Creek Rd	SHDW Transport to PHH	11/6/19	11:46	52nd St	Assist, Public
11/4/19	4:34	Spruce St	Transport to PHH	11/6/19	14:48	Oak St	Transport to PHH
11/4/19	6:37	Hwy 101	Transport to PHH	11/6/19	17:13	9th St	Assist, Public
11/4/19	8:44	Kingwood St	Transport to PHH	11/6/19	17:22	9th St	Transport to RB
11/4/19	9:12	Medical, 22nd St	SVFR Transport to PHH	11/6/19	17:40	Wood Lake Way	Transport to PHH
11/4/19	10:00	S Island Dr	Transport to PHH	11/6/19	18:03	9th St	Transport to RB
11/4/19	10:43	Kingwood St	Assist, Public	11/6/19	18:18	Hwy 101	Transport to PHH
11/4/19	11:43	Medical, Lake Point Dr	SVFR Transport	11/6/19	18:29	9th St	Transport to RB
11/4/19	12:43	9th St	Transport to RB	11/6/19	18:53	Harvard Ave	LCISO, OSP Transport to PHH
11/4/19	14:47	N Hwy 101	Transport to PHH	11/6/19	19:42	Collard Lake Rd	Transport to PHH
11/4/19	19:27	Lake Point Dr	Transport to PHH	11/6/19	21:14	Redwood St	Assist, Public
11/4/19	22:50	9th St	Transport to RB	11/6/19	22:13	Fire, Munsel Creek Dr	SVFR Transport
11/5/19	3:59	Nandina Dr	Transport to PHH	11/6/19	22:58	Alarm, Park Village Dr	SVFR Public Assist
11/5/19	5:57	Medical, Hwy 126	SVFR Transport to PHH	11/7/19	:20	Alarm, 9th St	SVFR Public Assist
11/5/19	8:16	Spruce St	Transport to PHH	11/7/19	13:07	Medical, Hwy 101	SVFR Transport to PHH
11/5/19	8:39	Medical, 21st St	SVFR Transport to PHH	11/7/19	14:09	8th St	Transport to PHH
11/5/19	14:30	Jonathan Ln	Transport to PHH	11/7/19	15:09	Medical, Hwy 101	SVFR Transport to PHH
11/5/19	14:48	9th St	Transport to RB	11/7/19	21:49	Kingwood St	Assist, Public
11/5/19	15:16	Medical, Oak St	SVFR, FPD Transport	11/7/19	23:07	Munsel Creek Dr	Transport to PHH
11/5/19	15:23	Glenada Rd	Assist, Public	11/8/19	4:08	Medical, Hwy 101	SVFR Transport to PHH
11/5/19	16:15	Hwy 101	Transport to PHH	11/8/19	5:22	9th St	Assist, Public
11/5/19	17:00	MVA, Hwy 101	SVFR, OSP Transport	11/8/19	6:46	9th St	Transport to RB
11/6/19	4:45	15th St	FPD Transport to PHH	11/8/19	8:34	Medical, Spruce St	SVFR Assist, Public
11/6/19	6:05	Medical, 24th St	SVFR, MFD Transport	11/8/19	12:23	9th St	Transport to RB
11/6/19	6:38	Medical, 43rd St	SVFR Transport to PHH	11/8/19	13:17	Willow Lp	Transport to PHH
11/6/19	6:55	Hwy 101	Assist, Public	11/8/19	16:04	MVA, Kingwood St	SVFR Assist, Public
11/6/19	8:20	9th St	Transport to RB	11/8/19	18:15	Medical, Harvard Ave	SVFR Assist, Public
11/6/19	11:23	Leelo Ct	Transport to PHH	11/8/19	18:27	Medical, Knoll Way	SVFR Transport

FALL IS HERE! Are your boots ready?



PICK-UP & DELIVERY NOW AVAILABLE AT
FLORENCE SHIPPING SOLUTIONS
2006 HWY 101, FLORENCE

Skilled craftsmen repairing and renewing your favorite boots, shoes, belts, wallets, luggage, handbags and more.

541.683.4115 | BURCHSSHOOES.COM
1 CLUB ROAD, EUGENE

Decreased daylight means increased need for road safety

With the end of Daylight Savings Time, many people are leaving work after dusk. As always, it's important that everyone takes an extra moment to consider pedestrians. Too often, in collisions with cars, pedestrians end up the losers.

Oregon crosswalk laws were written to provide a buffer of safety for pedestrians on the roadway.

The law for drivers
A crosswalk exists at any public street intersection, whether marked with paint or unmarked. Crosswalks also exist between intersections (mid-block) only if they are marked with white painted lines. Under Oregon law ORS 811.028, a driver has specific duties to a pedestrian in a crosswalk, whether marked or unmarked.

When turning at a traffic signal, drivers must stop and remain stopped for pedestrians until they have cleared the lane into which the vehicle is turning and at least six feet of the next lane.

At any other crosswalks — whether marked with paint or unmarked — drivers must stop and remain stopped for pedestrians until they have cleared the lane in which the vehicle is traveling and the next lane. Stop and remain stopped for students as directed by a crossing guard.

Stop and remain stopped for a blind pedestrian using a white cane or a guide dog until the pedestrian is completely across the roadway.

Drivers who fail to yield to pedestrians may be issued a citation carrying a hefty fine.

The law for pedestrians
Oregon laws affect pedestrians too; even though vehicles are always required to use due care when operating around pedestrians.

Pedestrians are required to obey traffic signals and walk safely.

Pedestrians are also required to yield to vehicles. Pedestrians are prohibited from suddenly moving from a place of safety into the path of a vehicle so close as to constitute a hazard. Pedestrians are also required to yield to a vehicle when crossing the roadway at any point other than a crosswalk.

Pedestrians who fail to comply with laws governing

pedestrian movement may be issued a citation carrying a fine.

Safety Tips:
• Remember, under Oregon law there is a crosswalk at every intersection.
• Don't pass a vehicle stopped at a crosswalk. A stopped car may be a clue that a pedestrian is crossing.

When stopped for a crosswalk on a multi-lane road, you should stop about 30 feet before the crosswalk so you don't block visibility to a driver in a second lane.

• When stopping at an intersection, don't block the crosswalk. This forces pedestrians to go around your vehicle and puts them in a dangerous situation.

• Watch for pedestrians, especially children, when exiting driveways or when backing out of parking spaces in parking lots.

• Pedestrians move at different speeds. Be alert to children who may suddenly dart into the street. Be patient with older adults who take extra time to cross the street.

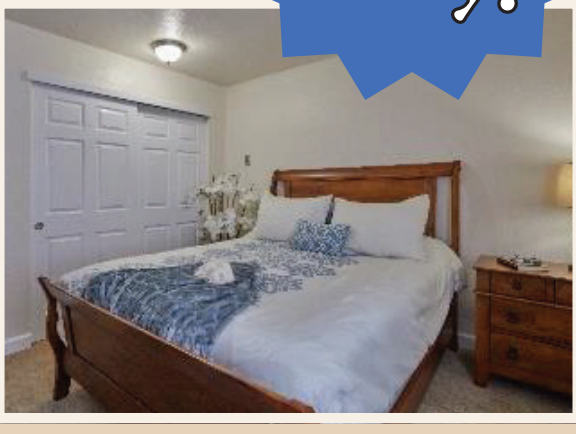
WELLS TREE & EXCAVATION

Licensed • Bonded • Insured • CCB 183908

541-999-5083

Tree Removal & Trimming • Brush Cutting
Stump Grinding • Micro Logging
Demolition • Driveways • Land Clearing
Rock • Sand • Gravel

Call now >>>>> 541.997.8202 Apartment homes offered by Shorewood



900 sq. ft. of beautiful living space. As you walk through the door, you'll feel its home...

RENTED
Full kitchen. Dishwasher. Perfect for the cherished family table and buffet that goes with it. Two bathrooms. One with a step-in shower and one with a tub. So much storage, downsizing is not a problem.

It's amazing at what retirement living has to offer!

OTHER FLOOR PLANS AVAILABLE

*Alcove: 400 square feet. Private bath and kitchenette, storage and plenty of natural light. \$2395. Smaller, but oh so cute and cozy!

*One bedroom/one bath: 475 square feet. Queen size bed fits. Kitchenette, with storage galore. Really! \$2595. Very livable with comfort!

*Two bedroom/one bath: 720 square feet. Has a 6X6.5 walk-in closet in the hallway. That's large enough for office space. Full kitchen with outside patio. \$3195. Yes, bring baby dog!

*One bedroom/two bath & a 14X16 family room: 875 square feet of wow. Six feet of counter space with a full kitchen. \$3200.

Not all floor plans are available. Add your name to the waiting list, so when you are ready, your new home will be waiting for you. The prices listed are for one occupant and good through December 2019. Call for details or come in just to chat.



- Monthly rent includes >>>
- 24-hour security
 - 3 meals prepared fresh daily
 - Fine dining menu
 - Coffee, ale, and wine bar
 - Workout room
 - Educational classes
 - Transportation
 - Yoga, balance class, & more
 - Utilities, WIFI, & Cable
 - Housekeeping weekly

Shorewood SENIOR LIVING

15th & Spruce Street
just off Highway 126
541.997.8202

nhill@shorewoodsl.com
www.shorewoodsl.com



DATE	HIGH	LOW	RAIN
Nov. 12	56	43	0.00
Nov. 13	57	47	0.00
Nov. 14	51	44	0.00
Nov. 15	52	50	0.59
Nov. 16	56	46	0.00
Nov. 17	56	45	0.03
Nov. 18	54	48	0.19

Rainfall Week: 0.81"
Month: 0.81" Year: 53.06"

Courtesy of Roger Cunningham

VISIT US ONLINE AT
THESIUSLAWNEWS.COM