

Classified Marketplace

FREE! Sell your household items for free. Total value of item must be \$300 or less. Free ads include 20-words or less and run 4 times.



SERVING: FLORENCE - MAPLETON - DUNES CITY - WESTLAKE - GARDINER - REEDSPORT

ANNOUNCEMENTS

Personals

As of August 27, 2019, I Richard Buffalo Walker am no longer responsible for any other debts than my own.

SERVICES

Cleaning Services

Florence Cleaning LLC- Licensed bonded & insured, is now providing professional residential cleaning. Call today 541-999-5033 or book at www.florencecleaning.com.

Miscellaneous

Interior Design by Fredericka. I don't just do windows; I Do It All! 323.770.1949

EMPLOYMENT

Help Wanted

Admin Assistant - Local law firm seeks part time office admin/clerical help. Proficiency with MS-Office Suite a must. QuickBooks experience helpful. Preference given for previous legal office experience, including practice management software, paralegal tasks, etc. Salary commensurate with experience. For consideration Email to jobsinsiuslaw@gmail.com.

Admin Assistant: Seeking detailed oriented person that can follow directions to assist Executive Director. Must have experience with word and excel, demonstrate excellent writing skills, and work as a team player. Applicants must also have at least 2-yrs. experience as administrative assistant or office manager. \$15-17 per hr. DOE. Part-time: 25 to 30hrs per wk., flexible hours. Send resume and cover letter to: SOS, PO Box 19000, Florence, OR 97439. Applications due no later than September 27, 2019.

All positions - ICM is now hiring. Apply at 1498 Bay Street.

Bus Driver - Preschool Mini-Bus, Mapleton School District, \$22/hour, 2 hours each morning and afternoon during school, training available for Type 20 Certificate, Ed Aide rides to help with students. For more info and to apply visit our website, www.mapleton.k12.or.us.

Caregiver or CNA - NEW COMPETITIVE WAGE SCALE \$15 per hour, lots of hours & shifts! Paid Training. New Horizon's In-home care. 398 Hwy. 101. 541-997-8115.

Cooks & Dishwashers - 1285 Restobar is hiring for Line Cook, Prep Cook & Dishwasher. Please apply in person at 1285 Bay Street.

Cooks & Dishwashers - Driftwood Shores is now accepting applications for both experienced and non-experienced staff. Please apply at the Surfside Restaurant 88416 1st Ave. Florence, OR.

Engineering Tech - The City of Florence is accepting applications for a full-time Engineering Tech. Position starts at \$20.07/hr. (DOQ) and includes a generous benefits package (medical, dental, PERS retirement, etc.). Position Closes: October 11 at 4 pm. To Apply: Visit www.ci.florence.or.us/jobs to review the job description and complete the online application form. The City has an online application system and only accepts electronic applications. Questions may be directed to (541) 997-3437 or recruitment@ci.florence.or.us. The City of Florence is an equal opportunity employer and service provider.

Host/Hostess - Surfside Restaurant at Driftwood Shores is looking for a Host/ Hostess to work part-time. Must be available to work weekends and holidays. Please apply in person between 10:00am and 4:00 pm any day.

Housekeeping Staff - Driftwood Shores Resort - Motivated and enthusiastic housekeeping staff needed. Must be available to work on weekends and holidays. Please submit applications to the Hotel Front Desk, 88416 1st Ave, Florence, OR 97439.

Jerry's Bar & Grill - Part-time Bartender & Cook needed in Florence. Bartender needed in Mapleton at new location. Please call 360-640-4214 or pick up applications at Jerry's Place, 88274 Rhododendron Drive, Florence.

McDonalds Crew - Seeking enthusiastic & outgoing individuals looking for flexible schedule up to 30hrs/wk. Apply in store or online @ restaurantjobs.mcdonalds.com.

RV Sales Person Wanted - Resume and references. Must pass drug & background check. Full-time. Must have great customer service and want to work. Call for appointment: 541-902-7987.

Spruce Point - Multiple Positions - Caregivers, RN's Housekeeper & Server - Looking for people who have a passion for working w/seniors. Wage DOE. Please apply in person @ 375 9th street across from the hospital.

Sushi Chefs Wanted - Submit resume in person @ The Pono Hukilau 185 HWY 101.

Reduce Recycle Reuse

MERCHANDISE

Furniture For Sale

Furniture For Sale - Dining Set - 6/chairs & Queen Bedroom Set w/mattresses. Make reasonable offer. Need gone ASAP. 702-523-9221.

Couch (1 1/2 yrs. old) - \$150; 3-coffee tables - solid oak & glass - \$75 for all; glass & wood tv stand - \$50; Panasonic microwave (2mo. old) - \$50; school desk - \$45. All in like new condition. 541-520-1450. 8' bookcase - \$100.

Garage Sales

Estate Sale Fri. & Sat. Only 9am-2pm 1699 27th Street #8 Everything Must Go!

2-Family Sale Fri.-Sun., 9/20-9/22 8am-2pm 2320 & 2268 18th Street Lots of kids stuff, household, etc.. Total clean out. Lots of everything! Rain or Shine - It's Covered!

ESTATE SALE 9/20-21, 9am to 3pm 4782 Cloudcroft An artist's estate! This house is packed with framed art, oil paints & supplies, frames & framing materials, Asian decor & furniture, antiques, kimonos, large collection of garden ornaments, holiday items, and household items. Lots of interesting items and something for everyone! Directions: Rhododendron Dr. to Salthaire, follow-signs. Please do not park in middle of cul-de-sac. All sales final. Credit cards accepted. View photos at CindyWobbeEstates.com

Medical Equipment

Portable Oxygen Concentrator May Be Covered by Medicare! Reclaim independence and mobility with the compact design and long-lasting battery of Inogen One. Free information kit! Call 855-792-9764.

Misc. for Sale

6-Custom made heavy-duty crab pots. Must buy all 6. \$240. 541-997-8854.

Sports Equipment

Vintage wood bat collection. Must see to appreciate. \$200. 541-997-8854.

REAL ESTATE

Apartment For Rent

\$525/mo. +dep. - Reed-sport 2bdm., 1.5 ba. Townhouse style apartment. Water & garbage paid. 541-662-2144.

Duplex For Rent

1,125/mo. - 2bdm., 1ba., avail. now. Brand new build. Call Kathy: 541-997-1540.

Houses For Rent/ Lease

\$950/mo. - 1bdm., 1ba. 950 sq. ft. guest apartment in single family Florence home on the golf course. Shown by appointment. Call: 541-997-7793.

Land For Sale

(Texas Best Buy) for sale by owner/Developer. Just released 3 Prime 20-acre parcels with Hwy. access. Only \$370 per acre. \$100 per month. Call: 1-800-875-6568.

AUTOMOTIVE

Vehides

2008 Ford F150 4x4 - Excellent condition. 100 miles. Matching integral canopy, V-8, Auto, nav. \$9,500. 541-999-9999 Leave Message.

2001 CAMARO Convertible. 85K mi., custom wheels & tires. \$5,750/obo. 541-991-2274 or 541-902-1368

2013 FORD F150 STX SUPERCAB 78k LOW mi., Canopy, Tow pkg., new oversized Michelin tires & alignment, Mobile 1 oil change every 3500 mi., Sat Radio, CD, PW, PB, AC, CC, Auto, 3.7L V6, super clean truck! \$15,995/obo. 541-991-3600 or 541-991-2694 cell.

ON SALE 2015 FORD FOCUS Low Miles Sale \$10,995 Stk#19U41B

2009 MAZDA 3 \$8,995 Stk#19U52A

2008 KIA AMANTI PREMIUM, LOW MILES \$6,995 Stk#19C02A

2014 JEEP CHEROKEE \$13,995 Stk#18114B

2008 MERCURY GRAND MARQUIS \$8,995 Stk#19U44

2002 FORD F150 4X4 \$7,995 Stk#19T26A

2011 MAZDA 3 S SPORT WAGON, LOW MILES \$12,995 Stk#18T59A

2005 SMOKER CRAFT TRACER 18' 60hp Yamaha + 8hp Yamaha kicker. Always garaged. \$9,000 541-997-8854

JOHNSTON MOTOR COMPANY 2150 Hwy. 101. Florence (541) 997-3475 1-800-348-3475

8 1/2' PORTABOTE Electric trolling motor. Battery and oars. \$1,200 541-997-2863

Who's in the News!!!

1979 RED FIAT SPIDER Runs great! 66k miles. New tires, shocks, battery, wiring. \$6,500 OBO Call or text Todd 541-953-4194

2018 GULF STREAM VINTAGE CRUISER TRAILER 17' Never been camping. \$15,500 cute 541-590-3744

1933 CHEVROLET MASTER EAGLE TOWN SEDAN With integral trunk. Independent front ends, rack & pinion steering. 541-747-3269. Call Don for price.

PRONTO M50 POWER CHAIR Good condition, \$300.00. 541-902-9195.

2013 CHEVY TRUCK 4X4 One owner. Extended Cab, long bed, 118K mi. Always Mobil 1, new brakes. Great tow rig. Make offer. 541-991-9846.

2013 ROADTREK RS Adventurous. MB Sprinter 3500. 3.0 V-6 Blue Tech Turbo diesel. Dual Rear wheels, shower, facilities, microwave, 2-burner stove & fridge. King bed, TV/DVD, cable TV hook up. Extra pantry space/wardrobe. APU has 53hrs. \$68,000 obo 541-999-5416

1936 CHEVROLET PICK UP 4-speed Trans., independent front ends, rack & pinion steering. Many parts. 541-747-3269 Call Don for price.

2016 COLEMAN 27FT TRAVEL TRAILER Large slide out rear living, queen bed new mattress, new stove. \$18,500. Like new condition. 541-297-9253 Florence.

2016 ROCKWOOD LITE 25', queen bed, couch, slide out, P/awning, TV & stereo. 13.5K BTU roof A/C, nice kitchen. Price Reduced, Like New Condition. \$17,750 541-590-3758

2003 MONACO WINDSOR ★REDUCED★ 40ft., 2 slides, Low mi., No smoke, No pets. Lots of extras. \$50,500 Local 916-761-4151

2016 COLEMAN 27FT TRAVEL TRAILER Large slide out rear living, queen bed new mattress, new stove. \$18,500. Like new condition. 541-297-9253 Florence.

2005 SMOKER CRAFT TRACER 18' 60hp Yamaha + 8hp Yamaha kicker. Always garaged. \$9,000 541-997-8854

8 1/2' PORTABOTE Electric trolling motor. Battery and oars. \$1,200 541-997-2863

COLDWELL BANKER COAST REAL ESTATE Each Office is Independently Owned and Operated

2018 GULF STREAM VINTAGE CRUISER TRAILER 17' Never been camping. \$15,500 cute 541-590-3744

1933 CHEVROLET MASTER EAGLE TOWN SEDAN With integral trunk. Independent front ends, rack & pinion steering. 541-747-3269. Call Don for price.

PRONTO M50 POWER CHAIR Good condition, \$300.00. 541-902-9195.

2013 CHEVY TRUCK 4X4 One owner. Extended Cab, long bed, 118K mi. Always Mobil 1, new brakes. Great tow rig. Make offer. 541-991-9846.

2013 ROADTREK RS Adventurous. MB Sprinter 3500. 3.0 V-6 Blue Tech Turbo diesel. Dual Rear wheels, shower, facilities, microwave, 2-burner stove & fridge. King bed, TV/DVD, cable TV hook up. Extra pantry space/wardrobe. APU has 53hrs. \$68,000 obo 541-999-5416

1936 CHEVROLET PICK UP 4-speed Trans., independent front ends, rack & pinion steering. Many parts. 541-747-3269 Call Don for price.

2016 COLEMAN 27FT TRAVEL TRAILER Large slide out rear living, queen bed new mattress, new stove. \$18,500. Like new condition. 541-297-9253 Florence.

2016 ROCKWOOD LITE 25', queen bed, couch, slide out, P/awning, TV & stereo. 13.5K BTU roof A/C, nice kitchen. Price Reduced, Like New Condition. \$17,750 541-590-3758

2003 MONACO WINDSOR ★REDUCED★ 40ft., 2 slides, Low mi., No smoke, No pets. Lots of extras. \$50,500 Local 916-761-4151

2016 COLEMAN 27FT TRAVEL TRAILER Large slide out rear living, queen bed new mattress, new stove. \$18,500. Like new condition. 541-297-9253 Florence.

2005 SMOKER CRAFT TRACER 18' 60hp Yamaha + 8hp Yamaha kicker. Always garaged. \$9,000 541-997-8854

8 1/2' PORTABOTE Electric trolling motor. Battery and oars. \$1,200 541-997-2863

COLDWELL BANKER COAST REAL ESTATE Each Office is Independently Owned and Operated

86 CHEVY EL CAMINO (Hard to find) New Motor 355ci, 5-year/50,000 Warranty, Auto. \$6,500 firm 541.590.3771 message

SANDRAIL Recently Tuned Up & Ready to Go! Come take a look! \$5,000/obo. 541-999-0548 Text Only

2008 CHEVROLET IMPALA Super Sport, white, leather, sunroof, V8, 4 on the floor, twin exhausts, 90K mi., Exc. cond. KBB value \$8,500/ reasonable offers accepted 541-997-9138

96 HOLIDAY RAMBLER 5th Wheel. Set up in space #17 @ Siuslaw RV Park. Good cond. w/custom upgrades. \$7,200 541-913-1271

2016 ROCKWOOD LITE 25', queen bed, couch, slide out, P/awning, TV & stereo. 13.5K BTU roof A/C, nice kitchen. Price Reduced, Like New Condition. \$17,750 541-590-3758

2003 MONACO WINDSOR ★REDUCED★ 40ft., 2 slides, Low mi., No smoke, No pets. Lots of extras. \$50,500 Local 916-761-4151

2016 COLEMAN 27FT TRAVEL TRAILER Large slide out rear living, queen bed new mattress, new stove. \$18,500. Like new condition. 541-297-9253 Florence.

2016 ROCKWOOD LITE 25', queen bed, couch, slide out, P/awning, TV & stereo. 13.5K BTU roof A/C, nice kitchen. Price Reduced, Like New Condition. \$17,750 541-590-3758

2003 MONACO WINDSOR ★REDUCED★ 40ft., 2 slides, Low mi., No smoke, No pets. Lots of extras. \$50,500 Local 916-761-4151

2016 COLEMAN 27FT TRAVEL TRAILER Large slide out rear living, queen bed new mattress, new stove. \$18,500. Like new condition. 541-297-9253 Florence.

2005 SMOKER CRAFT TRACER 18' 60hp Yamaha + 8hp Yamaha kicker. Always garaged. \$9,000 541-997-8854

8 1/2' PORTABOTE Electric trolling motor. Battery and oars. \$1,200 541-997-2863

COLDWELL BANKER COAST REAL ESTATE Each Office is Independently Owned and Operated

INFORMATION

Office Hours: 8 a.m. to 5 p.m. Monday through Friday
Phone: 541-997-3441
Fax: 541-997-7979
Address: 148 Maple St. PO Box 10 Florence, OR 97439

DEADLINES:

Wednesday Issue: Regular classified ads, Monday 1 p.m.; Boxed, Display Classified Ads & Vehicle/Boat Promos, Monday 12 p.m.; Service Directory - Friday, 5:00 p.m.
Saturday Issue: Regular classified ads, Thursday 1 p.m.; Boxed, Display Classified Ads & Vehicle/Boat Promos, Thursday 12 p.m.; Service Directory - Wednesday, 5:00 p.m.

ADJUSTMENTS:

If your advertisement appears incorrectly, notify us immediately. We will not be responsible for more than one incorrect insertion. Such responsibility is limited to correct insertion of advertisement. No information on the classified pages will be released prior to publication.

Ads are in Area Code (541) unless otherwise indicated in ad.

All persons whose rights may be affected by the proceedings may obtain additional information from the records of the court, the personal representative, or the attorney for the personal representative, Scott T. Bailey, Attorney at Law, P.C. at P.O. Box B, Florence, Oregon 97439.

Dated and first published September 7, 2019.
/s/ Lesli D. Stok, Personal Representative
Publication Dates: September 7, 14, & 21, 2019.

PUBLIC NOTICES

IN THE CIRCUIT COURT FOR THE STATE OF OREGON COUNTY OF LANE
In the matter of the estate of, EDWARD J. STOK DECEASED
Case No.: 19PB06380
NOTICE TO INTERESTED PERSONS
NOTICE IS HEREBY GIVEN that the undersigned has been appointed personal representative. All persons having claims against the estate are required to present them, with vouchers attached, to the undersigned personal representative at P. O. Box B, Florence, Oregon, 97439, within four months after the date of first publication of this notice, or the claims may be barred.

Find us on Facebook



SIUSLAW NEWS

LYNNETTE WIKSTROM

Broker
(541) 997-7777 EXT 118 OFFICE
(800) 999-5343 TOLL FREE
(541) 997-7159 FAX
(541) 999-0786 CELL
lynnette@cbcoast.com

COAST REAL ESTATE
100 HIGHWAY 101
PO BOX C
FLORENCE, OR 97439



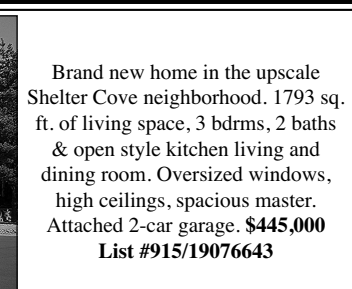
Commercial project property on the Siuslaw River. One commercial building started, with approval for 3 additional 2-story buildings plus observation decks. Second story could be river front residential. \$735,000 List #833/18686220



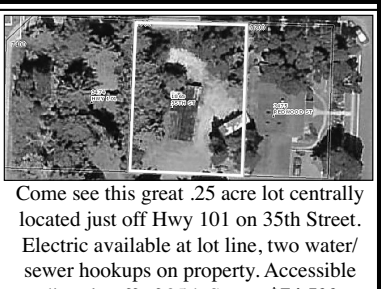
Four bdrm, 2 bath home on almost a half acre lot in the Woodland Terrace neighborhood. 1512 sq. ft. of living space. Separate master suite floor plan. Lots of parking, RV Hook-ups and mini barn for storage. \$230,000 List #912/19520052



Brand new home in the upscale Shelter Cove neighborhood. 1793 sq. ft. of living space, 3 bdrms, 2 baths & open style kitchen living and dining room. Oversized windows, high ceilings, spacious master. Attached 2-car garage. \$445,000 List #915/19076643



Riverfront fixer in idyllic setting. 3 bdrm, 1 3/4 bath home with 1798 sq. ft. of living space. Home on .60 acre lot & additional .30 lot with mature orchard. Private boat dock & launch onto the Siuslaw River. \$299,900 List #908/19022926



Fully remodeled in 2019, this 1748 sq. ft. Idlewood home features 3 bdrms, 2 baths and an attached double car garage. Lots of storage, SS appliances, breakfast bar. Master has w-i-c & private bath. \$389,500 List #923/19576490

1870 HWY 126, SUITE A
PO Box 3040
FLORENCE, OR
FAX 541-997-7654
VISIT US ONLINE AT
WWW.JIMHOBERG.COM

WEST COAST REAL ESTATE SERVICES, INC.
541-997-7653

Fawn Ridge .38 acre corner lot with the potential of Ocean views from the second level of your dream home. Gated community of upscale homes. Take advantage of the reduced system development fees in place now. \$88,500 List #878/18351969

Riverfront fixer in idyllic setting. 3 bdrm, 1 3/4 bath home with 1798 sq. ft. of living space. Home on .60 acre lot & additional .30 lot with mature orchard. Private boat dock & launch onto the Siuslaw River. \$299,900 List #908/19022926

Fully remodeled in 2019, this 1748 sq. ft. Idlewood home features 3 bdrms, 2 baths and an attached double car garage. Lots of storage, SS appliances, breakfast bar. Master has w-i-c & private bath. \$389,500 List #923/19576490