

SUPPORT OUR SIUSLAW VALLEY FIRE AND RESCUE

Come to the "Hope Breakfast"
June 21st 7 to 9 AM
\$15.00 per person

100% of proceeds goes to our Florence Fire and Rescue Emergency Fund.

Choose from: Pork Chilli Verde over crispy hash browns topped with two fresh farm eggs
 OR Baked Strawberry French Toast topped with fresh whipped cream.

Tickets available at Shorewood Office now, or at the door the day of the event.

Call Niki at Shorewood Senior Living with any questions.



Shorewood
 SENIOR LIVING

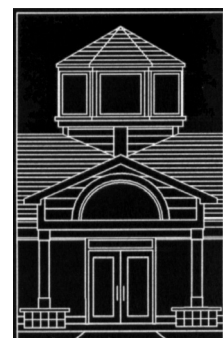
1451 Spruce St. • Florence

541-997-8202

ALL proceeds go to our local fire department.

Library Tidings

News about the Siuslaw Public Library



Library Tidings by Kevin Mittge features news about upcoming Siuslaw Public Library programs for adults and children, new books and videos, and other library news of interest to the community.

Book Review "The Heartland"

by Kristin L. Hoganson

When Kristin L. Hoganson arrived in Champaign, Ill., after teaching at Harvard, studying at Yale and living in the D.C. metro area with various stints overseas, she expected to find her new home, well, isolated. Even provincial. After all, she had landed in the American heartland, a place where the nation's identity exists in its pristine form.

Or so we have been taught to believe.

Struck by the gap between reputation and reality, she determined to get to the bottom of history and myth. The deeper she dug into the making of the modern heartland, the wider her story became as she realized that she'd uncovered an unheralded crossroads of people, commerce and ideas.

But the really interesting thing, Hoganson found, was that over the course of American history, even as the region's connections with the rest of the planet became increasingly dense and intricate, the idea of the rural Midwest as a steadfast heartland became a stronger and more stubbornly immovable myth.

In enshrining a symbolic heart, the American people have repressed the kinds of stories that Hoganson tells, of sweeping breadth, depth and soul.

In "The Heartland," Hoganson drills deep into the center of the country, only to find a global story in the resulting core sample. Deftly navigating the disconnect between history and myth, she tracks both the backstory of this region and the evolution of the idea of an unalloyed heart at the center of the land.

A provocative and highly original work of historical scholarship, "The Heartland" addresses pressing preoccupations, among

them identity and community, immigration and trade, security and global power. And food.

To read it is to be inoculated against using the word "heartland" unironically ever again.

"The Oregon Coast Highway" with Laura Wilt

Author Laura Wilt will be at the library on Saturday, June 22, at 1 p.m., to discuss her latest book, "Images of America: Oregon Coast Highway." Wilt is a librarian in Oregon's Department of Transportation who will tell the story of the construction of this amazing, iconic highway.

By the time the final links in the Oregon Coast Highway were made in 1936, the highway stretched 394 miles from Astoria to the border of California. It had taken 12 years to complete the construction over stretches of rugged headlands and thick forests.

Early travel along the coast was difficult; what roads existed were generally unimproved and often completely impassable during the rainy winter months. In many cases, the beaches themselves served as the only means of transporting freight and passengers. When Maj. Henry Bowlby, the first Oregon State Highway engineer, outlined a proposed system of state highways in 1914, he presented the vision of a coastal highway to the Oregon State Highway Commission.

The eventual construction of this highway opened access to the Willamette Valley and beyond for many formerly isolated coastal communities. It also signaled an economic shift that included the promotion of tourism and the accommodation of the flood of visitors anxious to take advantage of the spectacular vistas along the Oregon coast.



BERKSHIRE HATHAWAY
 HomeServices

Northwest
 Real Estate

(541)997-6000

www.RealEstateFlorence.com



Need more space?



Skip the online search and sign up for our HomeFinder email alerts to receive rapid updates on new listings in your area.



HomeFinder will also deliver instant price updates, complete listing details, and interactive maps with satellite images.

Put HomeFinder to work for you at RealEstateFlorence.com

NORTHWEST KNOWLEDGE



FEATURED LISTING
 Panoramic views up & down the Siuslaw River from kitchen, great room, master bdrm & bath. 1.56 ac lot, RV parking, workshop. Skylights, new carpet, vinyl & paint throughout in 2019.
 3 Bdrm + den, 3 Ba 1967 sq ft
\$598,000 BH7842 ML#19479938



FEATURED LISTING
 Lake access, common area trail to lake. Large RV garage with 30 amp & outside dumpsite. 3 car finished garage, waterfall & pond. Garden spot. Gated community, 3 full en suites 3.5 acres
 3 Bdrm, 4 full & 3 partial Ba 3356 sq ft
\$799,000 BH7729 ML#18280268



NEW LISTING
 "One of a kind" waterfront home on Woahink Lake; boathouse with lift & private dock. Vaulted beamed ceilings, 2 river rock fireplaces & lake view from every room, upper & lower decks
 4 Bdrm, 3 1/2 Ba 4463 sq ft
\$1,200,000 BH7859 ML#19272535



NEW LISTING
 Set back for privacy on .65 acres. Gardener's Paradise with 2 greenhouses, shed & workshop
 2 Bdrm, 2 1/2 Ba 1976 sq ft
\$365,000 BH7863 ML#19691129



NEW LISTING
 Architecturally designed home in upscale area of Willow Dunes. Wall of windows overlook private backyard with creek & natural vegetation behind
 2 Bdrm, 2 Ba 2071 sq ft
\$394,500 BH7865 ML#19513228



FEATURED LISTING
 Golden West beauty, well maintained home. River access or fish from the deck surrounding your home on the Siuslaw River. Fruit trees & a place to garden
 3 Bdrm, 2 Ba 1674 sq ft
\$350,000 BH7829 ML#19574412



FEATURED LISTING
 Fabulous 1st home or use as a 2nd home. Beautifully appointed. Private backyard with finished double garage. Must see!!
 2 Bdrm, 2 Ba 1231 sq ft
\$325,000 BH7846 ML#19224795



PRICE REDUCED
 Gorgeous Golden West on 1.12 level acre with attached 24'x24' garage plus 15'x24' workshop & a 22'x26' detached garage, RV pad w/50 amp & dumpsite
 3 Bdrm, 2 Ba 2389 sq ft
\$449,000 BH7847 ML#19013648



FEATURED LISTING
 70' of Collard Lake frontage with private dock. Wall of windows capture the lake & tree views. 1488 sqft lower level ready to be finished for extra space w/separate entrance
 3 Bdrm, 2 Ba 1986 sq ft
\$575,000 BH7853 ML#19692020