

THE RECORD

AMBULANCE/FIRE

Western Lane Ambulance District and Siuslaw Valley Fire & Rescue Ambulance and fire call runs Dec. 16-22

Date	Time	Area	Type	Date	Time	Area	Type
12/16/18	4:33	Wood Lake Way North	Transport to PHH	12/19/18	20:09	Rhododendron Dr	Transport to PHH
12/16/18	6:59	Maple St	Transport to PHH	12/19/18	20:48	Rhododendron Dr	Transport to PHH
12/16/18	7:36	Rhododendron Dr	Transport to PHH	12/19/18	20:59	Spruce St SVFR	Transport to PHH
12/16/18	10:06	Sweet Creek Rd	Transport to PHH	12/19/18	22:01	5th St	Transport to PHH
12/16/18	14:02	Rice Rd	Transport to PHH	12/20/18	0:42	Hwy 126	Transport to PHH
12/16/18	15:27	Hwy 126	SVFR Transport to PHH	12/20/18	3:19	Sherwood Lp	Transport to PHH
12/16/18	15:36	Oak St	SVFR Public Assist	12/20/18	4:31	Hwy 101	Transport to PHH
12/16/18	21:13	9th St	Transport to RB	12/20/18	6:26	Oak Street	Transport to PHH
12/17/18	2:11	Evergreen Ln	Transport to PHH	12/20/18	8:31	View Rd	Transport to PHH
12/17/18	4:55	Herman Cape Rd	Transport to PHH	12/20/18	11:25	Oak St	Transport to PHH
12/17/18	7:03	Maple St	Transport to PHH	12/20/18	11:31	9th St	Transport to PHH
12/17/18	7:04	Rhododendron Dr	Transport to PHH	12/20/18	12:04	12th St	Transport to PHH
12/17/18	7:55	Munsel Creek Lp	Transport to PHH	12/20/18	12:05	9th St	Transport to PHH
12/17/18	11:07	Maple St	Transport to PHH	12/20/18	12:37		Transport to PHH
12/17/18	13:50	9th St	Transport to BAH	12/20/18	15:43	Hwy 126	Transport to PHH
12/17/18	14:58	16th St	Transport to PHH	12/20/18	20:02	Oak St	Transport to PHH
12/17/18	19:21	Bay St	Transport to PHH	12/20/18	21:12	9th St	Transport to ALF
12/17/18	20:53	Q'aach Rd.	Transport to PHH	12/21/18	8:59	9th St	SVFR Public Assist
12/18/18	1:02	Kelsie Ct	Transport to PHH	12/21/18	9:51	Woahink Dr	SVFR Transport to PHH
12/18/18	2:55	Airport Rd	Transport to PHH	12/21/18	9:55	9th St	Transport to PHH
12/18/18	3:42	Airport Rd	Transport to PHH	12/21/18	9:59	Russell Dr	Transport to PHH
12/18/18	8:31	Sebastian St	SVFR Public Assist	12/21/18	10:12	Hwy 101	Transport to PHH
12/18/18	9:02	Hwy 126	Transport to PHH	12/21/18	11:02	Hwy 101	Transport to PHH
12/18/18	9:04	9th St	SVFR Public Assist	12/21/18	15:37	MVA, SW Morrison St	SVFR Public Assist
12/18/18	9:33	Willow Loop	Transport to RB	12/21/18	15:44	Oak St	SVFR Public Assist
12/18/18	9:38	Hwy 101	SVFR Public Assist	12/21/18	17:42	9th St	Transport to RB
12/18/18	10:30	10th St	Transport to PHH	12/21/18	18:41	Hadsall Creek Rd	Transport to PHH
12/18/18	12:08	Hwy 101	SVFR Public Assist	12/21/18	19:53	9th St	Transport to RB
12/18/18	15:17	Hwy 101	Transport to PHH	12/21/18	22:26	43rd St	Transport to PHH
12/18/18	15:44	Nelson Mountain Rd	Transport to PHH	12/22/18	2:14	9th St	Transport to RB
12/18/18	21:38	9th St	Transport to RB	12/22/18	10:24	Rhodowood Dr	Transport to PHH
12/19/18	0:23	21st St	FPD Transport to RB	12/22/18	12:05	Rhododendron Dr	Transport to PHH
12/19/18	3:06	9th St	Transport to BAH	12/22/18	12:07	20th St	SVFR Public Assist
12/19/18	5:25	Hwy 101	Transport to PHH	12/22/18	12:49	Rio Rd	Transport to PHH
12/19/18	5:49	Florentine Ave	Transport to PHH	12/22/18	13:51	Hwy 101	Transport to PHH
12/19/18	8:59	Park Village Dr	Transport to PHH	12/22/18	20:08	45th St	Transport to PHH
12/19/18	11:14	Boy Scout Rd	Transport to RB	12/22/18 21:50	9th St	Transport to RB	Transport to PHH
12/19/18	12:45	Deadwood Creek Rd	Transport to RB	12/22/18 22:29	9th St	Transport to PHH	Transport to PHH
12/19/18	15:45	Cedar Dr	Transport to PHH	12/22/18 23:29	MVA, Hwy 101	SVFR Transport to PHH	Transport to PHH
12/19/18	17:43	9th St	Transport to SHMCUD				

Local DUII enforcement continues through Jan. 2

The Florence Police Department will be participating in extra DUII Enforcement through Jan. 2. Law enforcement agencies throughout Oregon and the rest of the United States will be participating in this nationwide effort to get impaired drivers off the street. High-visibility enforcement, accomplished by increasing the number of officers on the streets aggressively seeking out impaired drivers, is designed to deter people from driving after they have been drinking.

Surfside Restaurant

Open New Years Eve 7 am - 9 pm
Open New Years Day 7 am - 8 pm

Serving Breakfast, Lunch & Dinner
For Reservations, Please Call
541.997.8263
Driftwoodshores.com

THESIUSLAWNEWS.COM

Dunes City seeks to fill Planning Commission vacancies

Dunes City is accepting applications for a Planning Commissioner. Applicants must reside in Dunes City and complete an Application for Appointive Office, available at Dunes City Hall or from the City's website, www.dunescity.com/permits-and-forms.

Applications can be mailed or delivered to Dunes City Hall, 82877 Spruce St., Westlake, Ore. 97493, or emailed to planning@dunescityor.com.

This is a volunteer position with a term ending date of Jan. 12, 2022. The Dunes City Council will consider applications during its Jan. 9 meeting. Applications should be submitted to Dunes City before Jan. 3, 2019.

The Planning Commission considers land use applications and revisions to Dunes City's land use code. The commission also provides oversight of Dunes City's Citizen Involvement Program.

This position offers an opportunity to learn how the implementation of land use code takes place, what must be done to change codes and the process of conducting public hearings.

The Planning Commission meets at Dunes City Hall on the fourth Thursday of the month at 5 p.m. and in special sessions as necessary.



Delivering Peace Of Mind

From Day 1, parenthood is filled with cherished moments including the baby's first trip home. Each year, Florence's first born arrives home in the comfort and protection of a new child safety car seat donated by Peace Harbor Medical Center. This annual tradition is among the many ways in which Peace Harbor's Women's Services team is dedicated to keeping all of our precious moms and babies healthy and safe throughout the birthing journey.

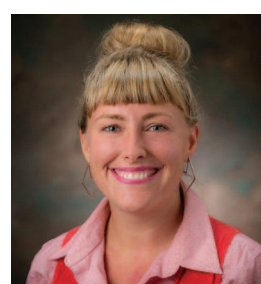
- Labor and Delivery Tours
- Lactation Services
- Expert Maternity and Neonatal Care

Our Women's Services Physicians

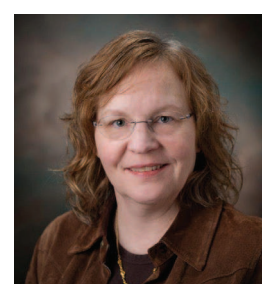
Now accepting new patients. To schedule your appointment, call **541-902-1634**.



Yvonne Sculley, MD, OB/GYN



Justine Parker, DO, Family Medicine, OB



Jacquelyn Serrano, MD, Family Medicine, OB

WEATHER DATA

DATE	HIGH	LOW	RAIN
Dec. 11	51	42	0.63
Dec. 12	50	38	0.08
Dec. 13	54	36	0.00
Dec. 14	54	36	0.25
Dec. 15	50	39	0.06
Dec. 16	54	45	0.83
Dec. 17	51	42	0.89

Rainfall Week: 2.74"
Month: 4.17" Year: 52.61"

Courtesy of Roger Cunningham

PeaceHealth
Peace Harbor Medical Center

peacehealth.org/birth-florence