

## RIDING CLUB FOR STUDENTS TO BEGIN SOON

C&M Stables is again offering Horse Club to area boys and girls between the ages of 6 and 18 during the 2018-19 school year.

Horse Club sessions are held after school, with specific class days and times dependent upon the number of students that participate.

Through this program, kids learn about the day-to-day chores that take place to have a horse and be able to ride. The interaction with the horses also enables them to gain confidence as their skills and abilities increase over time.

There are occasional mini-trail rides planned as stu-

dents get to a safe riding level, as well as a trail ride that includes parents at the end of the session.

The program offers two Horse Club sessions during the school year, which follow the Siuslaw School District school calendar.

Sign-ups are being accepted now for the first

session, which begins the week of Sept. 16, and ends the week of Jan. 13, 2019.

For more information or to sign up for Horse Club, stop by C&M Stables (eight miles north of Florence at 90241 Hwy 101) between 10 a.m. and 5 p.m., seven days a week, or call 541-997-7540.

## SALMON FISHING TIPS BEING OFFERED TONIGHT AT STEP

Local fishing guide Chad Wiest of "On the line Guide Service" will share his methods to catch salmon in the Siuslaw River. He will speak at the Florence Salmon Trout Enhancement Program (STEP) meeting Wednesday, Sept. 5, at 7 p.m., at the back

room of the Florence Elks Club, 1686 12th St., off of Highway 101.

Wiest will show the equipment and the bait he uses. He will also discuss the best times and spots to fish.

All STEP meetings are open to the public.

## Heceta Lighthouse tour season weekends extended

The Heceta Lighthouse Interpretive Center at the Keepers' Home is extending its tour season to include weekends in September.

The keeper's home will be open to the public 11 a.m. to 3 p.m. on Saturdays and Sundays through September. However, there will be no tours available on Sept. 15 and 29 due to the home being rented for wedding services.

Previously, tours were only available Memorial Weekend through Labor Day. Due to the popularity of viewing the interior of the 124-year-old assistant light keepers' home and hearing the history from volunteer docents, management has decided to extend the season.

Tours are free, but donations are accepted.

All funds raised by the Heceta Lighthouse Interpretive Center at the Keepers' Home go towards the restoration of the home and the interpretive program. The current goal is to raise enough money to build the wings that originally existed on the north side of the duplex, making the building handicap accessible and providing a guest room and bathroom on the first floor with a view of the lighthouse.

The keepers' home is run as a bed and breakfast year-round.

For more information, visit [www.hecetalighthouse.com](http://www.hecetalighthouse.com), or call 866-547-3696.

Interpretive programs at

the lighthouse tower are managed by the State Park and are available 11 a.m. to 3 p.m. daily and year-round, depending on weather and volunteer availability.

For more information about the State Park programs, please call 541-547-3416.

The Heceta Lighthouse Gift Shop will remain open daily in September, and in October on weekends, weather permitting.

The gift shop also has an online presence at [www.hecetalighthouse.com/giftshop](http://www.hecetalighthouse.com/giftshop).

Parking for the Keepers' Home, Gift Shop, and Lighthouse viewing area is in the State Park parking lot at the Heceta Head Lighthouse State Scenic

Viewpoint.

It is a 1/4-mile walk to the Keeper's Home and Gift Shop, and another 1/4 mile to the lighthouse tower.

Parking is \$5 per vehicle (cards only) or free with an Oregon State Park Annual Pass or multi-agency Oregon Pacific Coast Passport.

## OSMB from 1B

Many boaters are tempted to ride on the swim platform, stern, sides and the bow of unenclosed boats. The stern can be a dangerous place for exposure to carbon monoxide and a prop-strike safety hazard.

It is illegal to ride on the bow, decks, gunwales or transoms of a motorboat when the boat is underway. Sitting on designated seats is the safest option—especially when the boat is towing someone. Just because new boats have seats on the transom or swim step doesn't make them legal.

• Slow down and keep a sharp lookout. Know the

boating regulations for your area of operation. Always obey the "slow-no wake" buoys or signs. Boaters, including PWCs, are responsible for their wake.

Remember to slow down within 200 feet of a dock, launch ramp, marina, moorage, floating home or boathouse, pier or swim float. Be courteous with one another and share the waterway.

Paddlers should stay close to shore, crossing busy channels at right angles only when it is safe.

Marine officers will be enforcing slow-no wake zones and other marine laws. The top violations so far this summer involve life jacket violations, excessive

speed, unsafe operation, failure to maintain a proper lookout, riding on the gunwales, deck or transom when a boat is underway, and overloading.

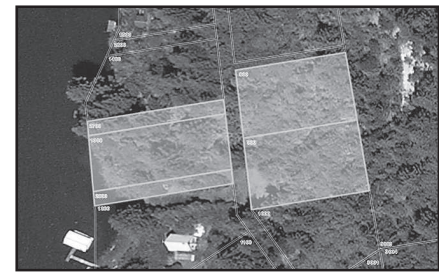
So far this year, there have been 15 recreational boating fatalities involving six motorized boats, eight nonmotorized and one sailboat. Only four of the victims were wearing life jackets and those accidents occurred on rivers where other factors contributed to the fatalities.

For more information about equipment requirements, regulations and ideas on where to go boating, visit [www.boatoregon.com](http://www.boatoregon.com).

## Get Results...List With Ed.



**Ed Kopilec**  
Principal Broker  
541 991-8630



**Booth Island #1300** – Boat to your own island retreat with 1.2 acres of pristine island living on Siltcoos Lake. Over 100' of lake frontage. Fish for Salmon, Steelhead, Trout and Bass. Kayak the Siltcoos River down to the Pacific Ocean. Nearby rentals are available at Westlake Resort. \$99,000. #2729-17237076

1749 Highway 101 • 541-997-1200

**Eugene Foot and Ankle Health Center**  
Podiatric Physicians & Surgeons  
From routine checkups to treatments for surgery, Eugene Foot and Ankle Health Center is equipped to handle all your podiatric needs.

Achilles Tendon	Crush Injuries	Heel Spurs
Ankle Instability	Diabetic Foot	Ingrown Toenails
Ankle Sprains	Comprehensive Rearfoot and Reconstructive Surgery	Injuries
Arthritic Foot & Ankle Care	Flat Feet	Neuromas
Athletes Foot	Fungus Toenails	Plantar Fasciitis
Bunions	Foot and Ankle Fractures.	Sports Medicine
Calluses	Hammertoes	Trauma
Corns		Warts

To help you understand your options, we've included descriptions of some of our leading services on our website. [www.eugenefootandankle.com](http://www.eugenefootandankle.com)

<b>FLORENCE</b> 4480 HIGHWAY 101 BUILDING G MON/TUES (541) 997-2319	<b>EUGENE</b> 1680 CHAMBERS ST. (541) 683-3351
---	--

**See Jim for your auto sales needs!**

**JOHNSTON MOTOR COMPANY**

2150 Hwy. 101 • Florence  
(541) 997-3475 • 1-800-348-3475

VISIT US ONLINE:  
[WWW.THESIUSLAWNEWS.COM](http://WWW.THESIUSLAWNEWS.COM)

**SEA COAST ENTERTAINMENT ASSOCIATION**

**2018-2019 COASTAL CONCERT SERIES**  
FLORENCE OREGON

**Doo-Wah Riders**  
Wednesday, October 24, 2018 7 pm  
Pre-concert talk 6:15 pm

**Ken Lavigne**  
Saturday, November 24, 2018 7 pm  
Pre-concert talk 6:15 pm

**Christian Howes**  
Wednesday, January 9, 2019 7 pm  
Pre-concert talk 6:15 pm

**Nicole Henry**  
Thursday, February 14, 2019 7 pm  
A flat floor cabaret event

**Dervish**  
Wednesday, March 20, 2019 7:00 pm  
Pre-concert talk 6:15pm pm in theater

**Valse Café Orchestra**  
Wednesday, April 24, 2019 7 pm  
Pre-concert talk 6:15 pm

**Olé World Music and Comedy**  
Wednesday, May 22, 2019 7 pm  
Pre-concert talk 6:15 pm

Purchase online:  
[www.SeacoastEA.org](http://www.SeacoastEA.org)  
visit or call the FEC box office  
541.997.1994

Performance Venue  
Florence Events Center,  
715 Quince Street, Florence

Season Tickets: \$160  
Single Ticket: \$35  
Youth/Students (under 18): \$10  
Every purchase supports your community!