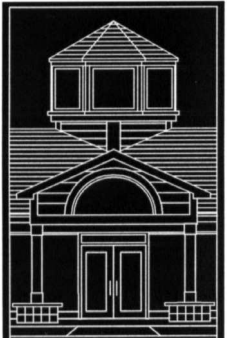


## Library Tidings



### News about the Siuslaw Public Library

Library Tidings, a regular feature of the Siuslaw News, features news about upcoming Siuslaw Public Library programs for adults and children, new books and videos, and other library news of interest to the community.

Library Tidings by Kevin Mittge  
Adult Services Librarian

Siuslaw Public Library  
541-997-3134

**Book Review**  
“The Invisible Life of Euridice Gusmao”  
By Martha Batalha  
“The Invisible Life of Euridice Gusmao,” by Martha Batalha, is a wickedly funny tale of two rebellious sisters in 1940s Rio de Janeiro. Euridice is young, bright and ambitious. A talented musician, she dreams only of fame and fortune. But this is Rio de Janeiro in the 1940s, and the one thing society expects of its women is to be loving wives and mothers.

So when her rebellious sister Guida elopes, breaking her parents’ hearts, Euridice sacrifices her own aspirations to marry conventional Antenor, spending her days ironing his shirts and removing the lumps of onion from his food.

As his professional success grows, so does her feeling of restlessness.

Throwing convention to the wind, the irrepressible Euridice dreams up an array of creative ventures to escape her humdrum family life, to the distress of her tradition-loving husband.

And then one day the free-spirited Guida suddenly reappears, and together the two sis-

ters set about forging their own paths in life.

With a cast of unforgettable characters, “The Invisible Life of Euridice Gusmao” is a darkly comic novel from one of the most exciting new voices in world literature.

This book is Batalha’s first novel.

She studied journalism and literature in Brazil, worked first as reporter and then later in the publishing industry, and currently lives in California with her husband and children.

### Providing your email address may have benefits

There are certain advantages if you have an email address and provide that address to the library.

First, when you are expecting to receive a book that’s been on hold for you, you will immediately be notified when available — you don’t have to wait for the mail, and you help save the library postage.

How great is that?

Next, you will get an email three days before your materials are due, alerting you to either renew or return the items.

Also, you can receive over-

due notices by email.

And finally, if you fail to renew your library account, which is required each year, you’ll get an email a month after it expires reminding you to renew. The accounts need to be renewed so that we have an opportunity to update any changes to address, email or contact information.

If not renewed, your account will ultimately be dropped off the library system in 18 months.

You may have reasons not to provide your email address. Not everyone wants to get 3-day date due notices. So you don’t have to provide an email and you can always ask that you be removed from the list if you find your email getting to be overwhelming.

The library will be responsive to your preferences — just let us know!

### Holiday Hours

The library will be closed on Sunday, Dec. 24, and Monday, Dec. 25, in honor of Christmas.

It will close early, at 4 p.m. on Sunday, Dec. 31, and will be closed on Monday, Jan. 1, in honor of New Year’s Day.

## Supporting youth



COURTESY PHOTO

St Mary’s Youth Ministry Director Renee La Cosse (left) receives a check for \$300 from St Mary’s Men’s Club Vice President Ron Caputo to help support the youth organization’s activities.

### Is Jesus Coming Soon?

Man is always trying to predict the date Jesus is coming back. What does the Bible say about Jesus’ return? Is it imminent? Do we know the hour in which the Son of Man is to come, or will He come as a thief in the night? Come as we study this important topic.

This class is part of an ongoing study about premillennialism. All is welcome to attend! We meet at 6:30 p.m. every Thursday at:

**The Florence church of Christ**  
1833 Tamarack Street

You can contact us at (541) 997-3133, or go online to [churchofchristflorence.org](http://churchofchristflorence.org) for more information.



Join us Sunday, Dec. 24th  
at 10:45am for  
Carols, Candles & Communion

Corner of 10th & Maple St. • 541-997-3533  
[www.florencecrossroad.org](http://www.florencecrossroad.org)  
email: [office@florencecrossroad.org](mailto:office@florencecrossroad.org)

## Let me Showcase your property.



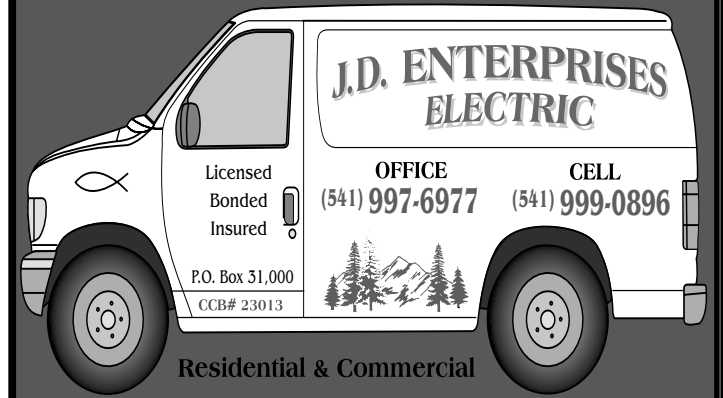
**Brian Jagoe**  
Principal Broker  
541 999-1314



1749 Highway 101 • 541-997-1200



88339 2nd Ave – Enjoy a five minute walk to the beach from this adorable double wide mobile. This delightful 2 bdrm, 1 bath home has a new deck, landings, sheetrock and flooring! Living here would be like being on vacation at the beach every day! \$137,500. #2726-17257452



P.O. Box 31,000 • Florence, OR 97439

## Living on Shaky Ground: Prepare-Survive-Recover A WLEOG Public Outreach Program

Sponsored by West Lane Emergency Operations Group  
Web address: [www.wleog.org](http://www.wleog.org)



NOW YOU CAN LEARN HOW TO PREPARE FOR EMERGENCIES AND DISASTERS - ON YOUR COMPUTER, PHONE OR TABLET!

Go to [WLEOG.ORG](http://WLEOG.ORG) and click on PREPAREDNESS CLASSES for a menu of disaster prep subjects. Each has short videos on different topics that you can watch when it is convenient for you and your family.

- \*\*SAFE WATER, SAFE SANITATION
- \*\*EMERGENCY FOOD PLANNING AND PREPARATION
- \*\*PET CARE PLANNING FOR DISASTERS
- \*\*ARE YOU READY?
- \*\*SENIOR CITIZEN PREPAREDNESS
- \*\*DOCUMENTATION AND INSURANCE

In addition to the classes, the [WLEOG.ORG](http://WLEOG.ORG) website has extremely useful information on NATURAL HAZARDS and EMERGENCY PREPAREDNESS.

Each of these has videos on various topics that explain the hazards the Pacific Northwest faces, and how to prepare for them.

# EMERGENCY PREPAREDNESS

## EMERGENCY PREPAREDNESS | POISON GAS

## Carbon Monoxide Poisoning

**A**ccidental carbon monoxide (CO) poisoning kills more than 400 people every year in the United States, according to the Centers for Disease Control and Prevention (CDC).

The odorless, colorless gas can cause sudden illness and death if inhaled, so prevention is key to keeping you and your family safe. A large number of the annual deaths caused by CO come during power outages after hurricanes or winter storms. People use alternative sources of fuel or electricity for heating, cooling and cooking inside their homes, which can catalyze a quick build-up of deadly CO gases. Generators, grills, camp stoves and other gasoline, propane, natural gas or charcoal-burning devices should never be used inside a home, basement, garage or camper under any circumstances.

### HOW TO RECOGNIZE CO POISONING

Exposure to CO can cause loss of consciousness and death, with the most common symptoms being headache, dizziness, weakness, nausea, vomiting, chest pain and confusion, according to the CDC. People who are sleeping or who have been drinking alcohol are at an increased risk for CO-related deaths, because they

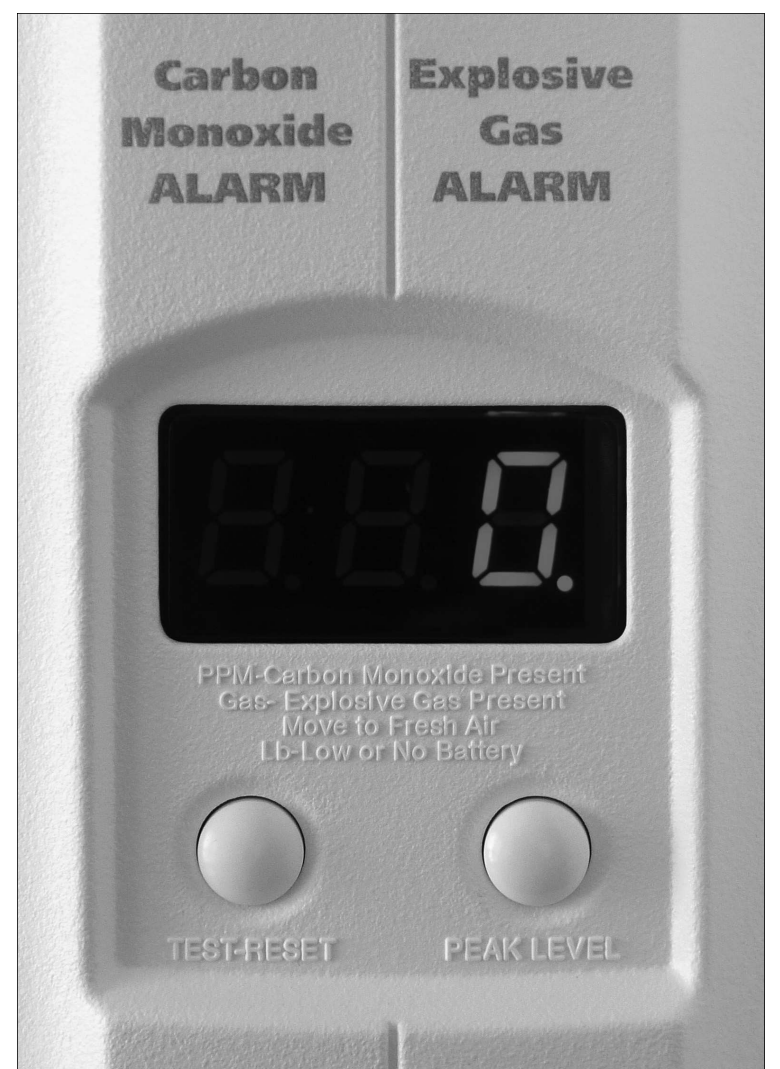
can be poisoned before ever having symptoms.

### DETECTORS

Every home should have at least one working carbon monoxide detector. The detector’s batteries should be checked at least twice annually, at the same time smoke detector batteries are checked. Detectors can be purchased for about \$20 at your local hardware store, so expense should not be a factor in your decision to buy one. It could be a small price for a smart, high-return investment.

### OTHER TIPS FROM THE CDC

- Never leave the motor running in a vehicle parked in an enclosed or partially enclosed space, such as a garage.
- If conditions are too hot or too cold, seek shelter with friends or at a community shelter.
- If CO poisoning is suspected, consult a health care professional right away.



For more information, visit these websites:

- AMERICAN RED CROSS — [WWW.REDCROSS.ORG](http://WWW.REDCROSS.ORG)
- CITY OF FLORENCE — [WWW.CI.FLORENCE.OR.US](http://WWW.CI.FLORENCE.OR.US)
- FEMA — [WWW.READY.GOV](http://WWW.READY.GOV)
- LANE COUNTY — [WWW.LANECOUNTY.ORG](http://WWW.LANECOUNTY.ORG)
- SIUSLAW VALLEY FIRE AND RESCUE — [WWW.SVFR.ORG](http://WWW.SVFR.ORG)
- WLEOG — [WWW.WLEOG.ORG](http://WWW.WLEOG.ORG)

Sponsored by

**CENTRAL LINCOLN PUD**  
966 Highway 101, Florence • 541-997-3414  
Mon - Fri 8am to 5pm

**STREETS INSURANCE**  
1234 Rhododendron Dr. Florence 541-997-8574