

Meet Santa at Spruce Point Holiday Bazaar Nov. 24

Santa Claus and his reindeer are making an appearance at Spruce Point Assisted Living and Memory Care on Friday, Nov. 24, from 1:30 to 3:30 p.m.

All are welcome to visit during the Spruce Point Holiday Bazaar. There will be craft vendors, a bake sale and chili feed, with Santa as the special guest.

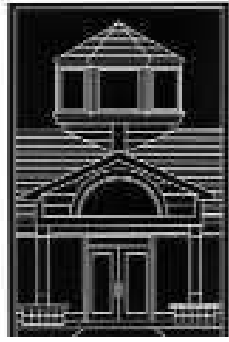
The event is free to attend.

Spruce Point Assisted Living and Memory Care is located at 375 Ninth St.

The Spruce Point Holiday Bazaar is looking for crafters and artisans to participate in the event. There is limited space, so people are encouraged to sign up early.

For more information on being a vendor, email lisa.douda@avalonseniorliving.com.

Library Tidings



News about the Siuslaw Public Library

Library Tidings, a regular feature of the Siuslaw News, features news about upcoming Siuslaw Public Library programs for adults and children, new books and videos, and other library news of interest to the community. Library Tidings by Kevin Mittge

Book Review

"Quakeland"

By Kathryn Miles

Earthquakes.

You need to worry about them only if you're in San Francisco or the Pacific Northwest, right?

Wrong.

Humans have been making enormous changes to subterranean America — and Mother Earth, as always, has been making some of her own.

The earthquakes that these changes induce will have consequences most of us do not expect and cannot even imagine.

Welcome to "Quakeland."

What will happen when Memphis, home of FedEx's 1.5-million-packages-a-day hub, goes offline as a result of an earthquake along the unstable Reelfoot Rift?

FEMA has estimated that a modest 7.0 magnitude quake along the Wasatch Fault under Salt Lake City would put a \$33 billion dent in our economy.

When the Fukushima reactor in Japan melted down, tens of thousands were displaced. If New York's Indian Point nuclear point plant blows, 10 million people will be displaced.

How would that evacuation even begin?

Kathryn Miles descends into mines in the Northwest, dissects Mississippi levee engineering studies, uncovers the horrific risks of an earthquake in the Northeast, and interviews the seismologists, structural engineers and emergency managers around the country who are addressing this ground-shaking threat.

"Quakeland's" tour of our land is full of spine-tingling and life-saving discoveries and is as fascinating and frightening as it is irresistibly compelling.

Hang-It All on display

The 25th annual "Hang-It All" art display is now up and patrons stopping by the library will be treated to a wide variety of local creative talent.

From photography to painting to 3-dimensional art, this display has it all.

Hang-It All runs through Nov. 30. Patrons are encouraged to vote on their favorite art piece, once each day.

The People's Choice Award will be announced at the conclusion of the show.

Borrowing material from other libraries

Do you ever need a book or other material that we don't have here at the Siuslaw Public

Library?

You can always ask if we can order it on "interlibrary loan." Interlibrary loan is a system where we search for the material at other libraries and request to borrow it for you. Books are usually the easiest to borrow.

Many libraries have restrictions on lending audiovisual materials such as DVDs, videos and recorded books, as well as special collections such as genealogy or local history, but it's always worth a try to see if we can borrow it.

The next time you need something just stop by the reference desk and we will see if we can help you out.

Apply to join the library's Art Committee

Do you have an interest or background in the arts? Would you like to help with library art displays and programs?

The library's Art Committee is seeking new members to give a few hours of their time each month to community art.

Selected members will serve three-year terms, including a monthly meeting and participation in arts events at the library.

Pick up an application at the circulation desk and apply through Saturday, Nov. 18, at 5 p.m.



Ladies of Elks Holiday Bazaar & Bake Sale

November 10th~11th

Elks Lodge West Door ~ 1686 12th St.

Friday 1-8:00 * Saturday 9-4:00 *

Gift Items * Baked Goods * Jewelry *
Decorations * Gourmet Desserts *



Jams & Jellies * Candy

Homemade Soup, Chili & Cornbread

Saturday 11:30 -1:30

\$5.00

Drawing For Holiday Gift Baskets

Saturday Dec. 9th At The Tom & Jerry Party

Donations of \$1.00 per ticket or 6 for \$5.00

Need not be present to win

All Proceeds Go To Local Charities

Operation Christmas Child to host gift collection site

Florence Evangelical Church will again be the Florence-area collection point for the world's largest Christmas project of its kind, Operation Christmas Child.

Florence residents, families, churches and groups can be part of spreading joy to millions of children around the world by filling shoeboxes

as Christmas gifts for children in need.

This year's National Collection Week is Monday, Nov. 13, through Monday, Nov. 20, at Florence Evangelical Church, 1318 Rhododendron Drive.

Florence project coordinators hope to collect 500 shoebox gifts for delivery to chil-

dren overseas.

Collection hours are Monday through Sunday, 10 a.m. to 2 p.m. With additional times, Wednesday, Nov. 15, from 5 to 8 p.m., and Monday, Nov. 20, from 8 to 10 a.m.

For more information about dropping off shoeboxes, call the church at 541-997-2523.

Operation Christmas Child has been an annual project of Samaritan's Purse since 1993. The project has delivered gift-filled shoeboxes to more than 124 million children, in more than 150 countries and territories.

For information on how to pack a shoebox visit www.samaritanpurse.org/occ.

LOOKING FOR BREAKING NEWS? www.TheSiuslawNews.com

INVITATION FOR BIDS

Sealed bids will be received by Daniel Hurley, Waste Management Division Manager, at the Office of the Department of Public Works, Waste Management Division, 3100 E. 17th Avenue, Eugene, Oregon, until 10:00:00 A.M., local time, THURSDAY, November 30, 2017, at which time and place they will be opened for the following project:

Contract No. 17/18-01 Florence Transfer Station Tipping Floor Repairs Lane County November 2017

The approximate quantities are: Approximately 36 CY of structural concrete overlay, 190 square feet of AR 400 3/8" metal sheet and associated steel materials. Estimated cost range: \$71,000 to \$79,000.

A portion of the bidding information is available through Lane County's Website at http://apps.lanecounty.org/pw_plan/Projects.aspx? (select "2017 Projects"). Information available on the website includes: Invitation for Bids, Plan Holders List, Plans and Special Provisions, Addendums, and Bid Results, but does not include the Bid Booklet required for submitting a bid.

Plans and specifications may be reviewed at the Lane County Waste Management Central Receiving Station between the hours of 9:00 am and 4:00 pm, Monday through Friday, on or after November 8, 2017. Interested parties may obtain printed copies of the plans and specifications for a non-refundable \$35.00 charge for each set. Only bidding documents (Bid Booklet) obtained directly from Lane County Department of Public Works office may be used to submit bids.

Bidders must obtain the Bid Booklet required for submitting a bid directly from the Department of Public Works Customer Service Center or from the Reception Desk at the Central Transfer Station, Glenwood, either in person or by calling 541-682-3882. Only a Bid Booklet obtained directly from Lane County Department of Public Works may be used to submit a bid.

Lane County will not consider a bid for a public improvement contract unless the bidder is licensed by the Construction Contractors Board or the State Landscape Contractors Board.

This project does not require the Contractor or subcontractor to be licensed under ORS 468A.720 for asbestos abatement.

Prevailing wage rates for public works contracts in Oregon are required for this project pursuant to ORS 279C.800 to 279C.870. The Contactor shall pay each worker in each trade or occupation employed to perform any work under the contract not less than the existing State (BOLI) prevailing wage rate. Lane County will not consider a bid unless the bid contains a statement by the bidder that the bidder will comply with ORS 279C.838 and ORS 279C.840.

Each bid must contain a statement as to whether the bidder is a resident or non-resident bidder, as defined in ORS 279A.120. Each bidder must be an "Equal Opportunity Employer" and comply with the appropriate provisions of state and federal law. Each bidder is required to comply with ORS 656.017 regarding worker's compensation, unless the bidder meets the requirements for exemption under ORS 656.126.

Pursuant to ORS 279C.505(2), Lane County's performance under this contract is conditioned upon the Contractor's compliance and warranty that a Drug Testing Program will be maintained for its employees.

Lane County may reject a bid that does not comply with prescribed public contracting procedures and requirements, including the requirement to demonstrate the bidder's responsibility under ORS 279C.375(3)(b), and the County may reject for good cause all bids after finding that doing so is in the public interest.

All envelopes must be sealed and plainly marked on the outside showing the name of the bidder, name of the project, contract number and the word "BID".

Each bid must be submitted on the required form and be accompanied by a cashier's check, certified check, irrevocable letter of credit issued by an insured institution as defined in ORS 706.008, or surety bond payable to "Lane County", Oregon in an amount of not less than ten percent (10%) of the amount of the bid.

Lane County Department of
Public Works Waste
Management Division
3100 E. 17th Avenue
Eugene, Oregon 97403

###

Festival of Trees

"Walking Through a Winter Wonderland"

Florence Events Center

Saturday, November 25
10am to 4pm

Trees, Wreaths, and
Stockings galore!

FREE ADMISSION!

An Annual Holiday Celebration benefitting the
Oregon Coast Military Museum