

Kid Scoop

THE AWARD-WINNING PRINT & ONLINE FAMILY FEATURE



© 2017 by Vicki Whiting, Editor Jeff Schinkel, Graphics Vol. 33, No. 37

Kid Scoop Together

Proof It

Are you a careful reader? Read the article below and see if you can circle all eight errors. Then, rewrite the article correctly on a sheet of paper.

Pluto: Is it a planet or not?



Billions of miles from Earth is tiny Pluto. We learned more about it when a NASA spacecraft passed by it for the very first time.

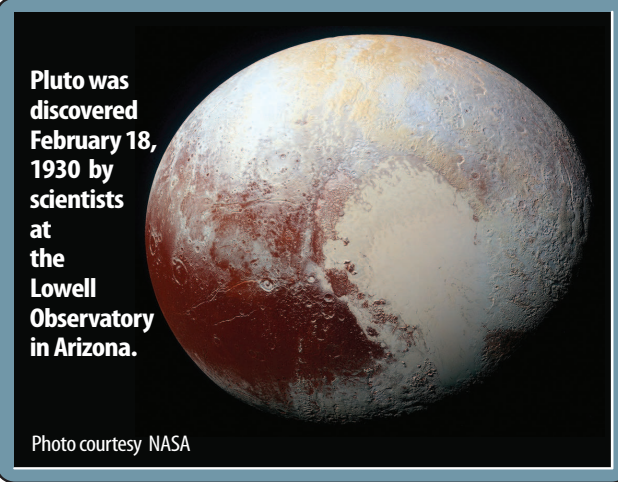
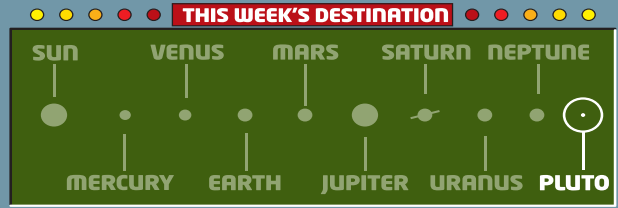
Dear Kid Scoop Readers -
Once Pluto was considered the ninth in our solar system.

In 2006, it was _____ that Pluto was too _____ to be a regular planet, so now it is called a "dwarf planet." It _____ the sun just like the other planets. But tiny Pluto is only half as _____ as the United States and it's _____ much smaller than our _____.

- Woodward

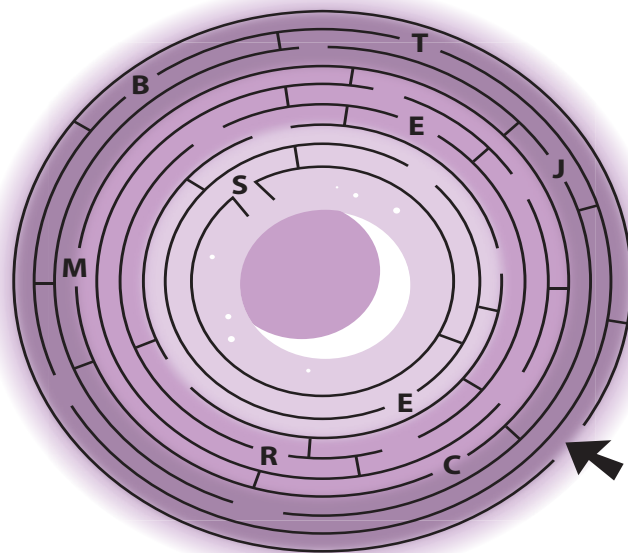
Replace the missing words.

- ORBITS
- WIDE
- MOON
- PLANET
- SMALL
- DECIDED



Dwarf Planets

To date, there are five objects orbiting the sun that are called dwarf planets. Pluto is one of them. Write down the letters on the correct path through this maze to discover the name of another of the dwarf planets.



Circle every other letter to find the names of the other three dwarf planets.

- E**KRDIJSB
- H**TANUBMYETAM
- M**DATKRENMTASKUEY

The Kuiper Belt

There is a belt in the outer reaches of our solar system. But it isn't a belt you can wear.

It's called the **Kuiper** (KY-ber) Belt and it is like a large space road filled with millions of object that are orbiting together.

Millions of small, ice object like asteroids, comets and even dwarf planets like Pluto are in the Kuiper Belt. Even though Pluto is a little, dwarf planet in the Kuiper Belt, it is the largest object.

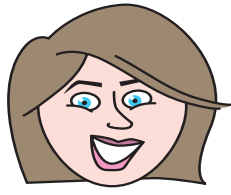
No spacecraft has ever visited the Kuiper belt. The exciting news is that one is on its way now. This is NASA's New Horizons mission which has flown by Pluto and is now on its way to the Kuiper Belt. Hopefully we will find out many new facts about this huge region which is so very far away.

Visit Pluto. Lose Weight.

If you visited Pluto, you would weigh much less there than you do on Earth. Do the math to find out how much less each person weighs on Pluto.



Albert weighs 75 pounds on Earth. He weighs (3+2) _____ pounds on Pluto.



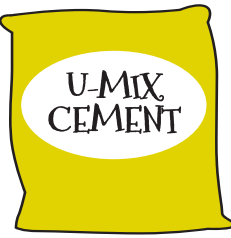
Mrs. Aster weighs 120 pounds on Earth. She weighs (12-4) _____ pounds on Pluto.



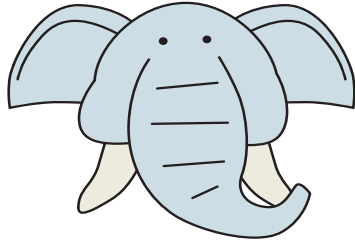
Cosmo the cat weighs 15 pounds on Earth. He weighs (100-99) _____ pound on Pluto.



Mr. Wilson weighs 200 pounds on Earth. He weighs just (7+7) _____ pounds on Pluto.



An 80 lb. bag of cement on Earth weighs only (10-4) _____ pounds on Pluto.



An elephant weighs 6,000 pounds on Earth. It weighs (210+210) _____ pounds on Pluto.

Use this chart to answer these questions.

- Pluto orbits the sun at a very high rate of speed. True False
- The diameter of Pluto is about the same as the distance between New York City and Houston, Texas. True False

| | PLUTO | EARTH |
|-----------------------|---------------------|--------------------------|
| DISTANCE FROM THE SUN | 3.6 BILLION MILES | 93 MILLION MILES |
| TIME TO ORBIT THE SUN | 248 EARTH YEARS | 365 DAYS |
| ORBIT SPEED | 10.7 MILES PER HOUR | 70,000 MILES PER HOUR |
| LENGTH OF DAY | 6.5 EARTH DAYS | JUST A BIT OVER 24 HOURS |
| DIAMETER | 1,473 MILES | 7,926 MILES |
| NUMBER OF MOONS | 5 | 1 |

SOURCE: planetfacts.org

Extra! Extra!

Pluto Adjectives

Look through the newspaper to find five adjectives that describe Pluto.

Standards Link: Language Arts: Follow simple written directions.

Kid Scoop-doku

Complete the grid by using all the letters in the word DWARF in each vertical and horizontal row. Each letter should only be used once in each row. Some spaces have been filled in for you.

| | | | | |
|---|---|---|---|---|
| R | | | | A |
| | D | | | R |
| | | R | | D |
| D | W | A | R | F |
| A | R | | | W |

Kid Scoop Puzzler

How Pluto Got Its Name

When Pluto was discovered in 1930, it was called simply, Planet X. Because Pluto orbits in the dark, outer reaches of space, the name of the Roman god of the underworld seemed like a good fit to this clever namer.

Use the code to find out the name of the 11-year-old English girl who suggested the name Pluto.

- = A ■ = B ■ = C ■ = E ■ = I ■ = N
- = R ■ = S ■ = T ■ = U ■ = V ■ = Y

Double Double Word Search

Find the words in the puzzle. Then look for each word in this week's Kid Scoop stories and activities.

- UNDERWORLD
- MAKEMAKE
- BIRTHDAY
- REGULAR
- PLANET
- PLUTO
- DWARF
- ORBIT
- CERES
- NINTH
- DARK
- TRIP
- ERIS
- LOSE
- MATH

| | | | | | | | | | |
|---|---|---|---|---|---|---|---|---|---|
| I | T | R | E | L | O | S | E | D | M |
| B | L | A | L | I | E | E | A | P | A |
| I | P | L | U | T | O | R | B | I | T |
| R | T | U | I | F | K | E | I | C | H |
| T | A | G | L | R | L | C | Y | S | O |
| H | T | E | K | A | M | E | K | A | M |
| D | L | R | O | W | R | E | D | N | U |
| A | R | B | I | D | H | T | N | I | N |
| Y | I | T | S | P | L | A | N | E | T |

Standards Link: Letter sequencing. Recognized identical words. Skim and scan reading. Recall spelling patterns.

Kid Scoop VOCABULARY BUILDERS

This week's word: **REGULAR**

The adjective **regular** means arranged in a distinct pattern.

The desks were placed at **regular** intervals.

Try to use the word **regular** in a sentence today when talking with your friends and family.

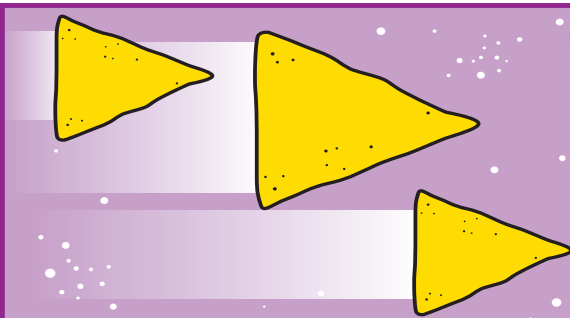
FROM THE Kid Scoop LESSON LIBRARY

Measure It!

There are so many things to measure in a newspaper. Measure with a ruler and find out:

- The size of a person standing in a photo
- The length of the longest headline
- The length of the longest word you find

Standards Link: Research: Use the newspaper to locate information.



What spacecraft is loud, fast and very crunchy?

ANSWER: A rocket chip.

Write On!

Write Words Wonderfully

Write a sentence in which all of the words, or nearly all the words start with the same letter. Example: *Red rockets rarely reach radar range.*



CHAD E. CLEMENT, D.D.S., P.C.

New Patients Welcome

Gentle, Personal, Comprehensive Care

Root Canals • Crown & Bridge • Extractions • Implant Restorations • Cosmetic Dentistry • Teeth Whitening

Relaxing riverfront view from all rooms.

(541) 997-3423

www.myflorencedds.com

1256 Bay Street