

Kid Scoop .COM

THE AWARD-WINNING PRINT & ONLINE FAMILY FEATURE



© 2017 by Vicki Whiting, Editor Jeff Schinkel, Graphics Vol. 33, No. 35

Kid Scoop Together

Proof It

Are you a careful reader? Read the article below and see if you can circle all eight errors. Then, rewrite the article correctly on a sheet of paper.

Neptune: The Windy Planet

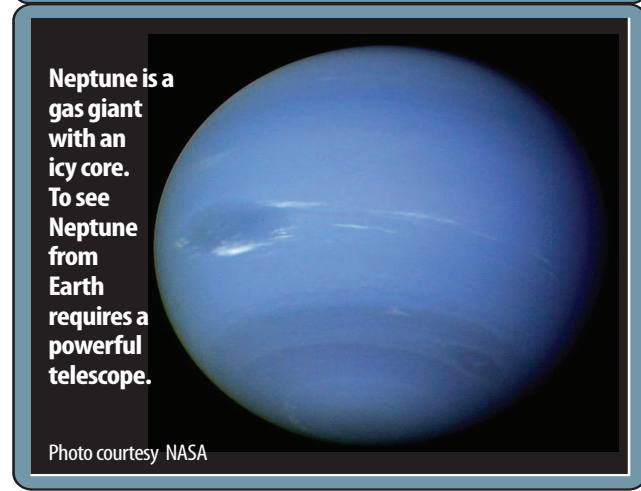
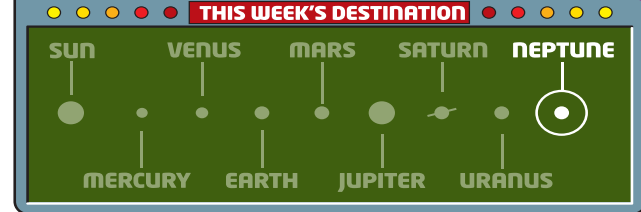
Extremely windy and icy cold, Neptune is a planet that is beautiful to look at but not welcoming to Earthlings.



Dear Kid Scoop Readers - Would you like to visit Neptune? You'd need a super space suit to the planet's _____ conditions! Scientists think there might be a super hot ocean under Neptune's cold _____. It does not _____ because of the incredible pressure. This _____ makes it impossible for a spacecraft - or person, to _____ on the planet. - Woodward

Replace the missing words.

- CLLOUDS
- LAND
- PRESSURE
- EVAPORATE
- SURVIVE
- ROUGH



Icy Moon

Neptune has 13 moon that we know of. The largest of these moons is Triton. Triton is one of the largest moons in the solar's system as well. At 1,700 miles across, it is nearly the same size as Earth's moon.

Triton is the only nown moon in our solar system to have a surface maid mainly of nitrogen ice.

Wile it is icy today, scientists think Triton was once a hot, volcanic plaice. Today it still has geysers that spew frozen nitrogen miles into the sky! These are called ice geysers.

Triton is one of the coolest objects in our solar system. It is so cold that most of Triton's nitrogen is condensed as frost, giving its surface an icy sheen that reflects 70 percents of the sunlight that hits it.

Happy New Year... Finally!

Neptune was discovered in 1846. But it took until the year 2011 for the planet to complete its first orbit around the sun since being discovered.

About how many Earth years did it take for Neptune to orbit the sun?

How many rings does Neptune have? Color the even-numbered squares blue and the odd-numbered squares black.

1	8	2	8	7
3	4	3	7	5
9	6	4	8	9
5	2	9	2	3
7	4	4	6	1

Brrrrrrrr!

Neptune is extremely cold. Find its average temperature by adding the numbers on the correct path through this maze. The temperature stays low most of the time because Neptune is so far away from the sun.



Hold Onto Your Hat!

Neptune is super windy. NASA says it might be the windiest planet in the solar system. Winds blow at speeds up to 1,200 mph! Complete the comparison chart below. Color in squares to indicate that a passenger jet cruises at about 500 mph, a bullet train at 300 mph and an Indy Car at 200 mph.

Neptune wind	100	100	100	100	100	100	100	100	100	100	100	100	100	100
passenger jet														
Bullet Train														
Indy Car														

Use this chart to answer these questions.

- The planet Neptune orbits the sun much faster than does Earth. True False
- The length of three Earth days are more than the length of four days on Neptune. True False

	NEPTUNE	EARTH
DISTANCE FROM THE SUN	2.8 BILLION MILES	93 MILLION MILES
TIME TO ORBIT THE SUN	164.93 EARTH YEARS	365 DAYS
ORBIT SPEED	12,079 MILES PER HOUR	70,000 MILES PER HOUR
LENGTH OF DAY	16 HOURS 6 MINUTES	JUST A BIT OVER 24 HOURS
DIAMETER	49,493 MILES	7,926 MILES
NUMBER OF MOONS	13 OR MORE	1

SOURCE: planetfacts.org

Extra! Extra!

Neptune Adjectives

Look through the newspaper to find five adjectives that describe Neptune.

Standards Link: Language Arts: Follow simple written directions.

Kid Scoop-doku™

Complete the grid by using all the letters in the word WINDY in each vertical and horizontal row. Each letter should only be used once in each row. Some spaces have been filled in for you.

		W		D
		I	W	
		N		W
W		D		
		W	Y	N

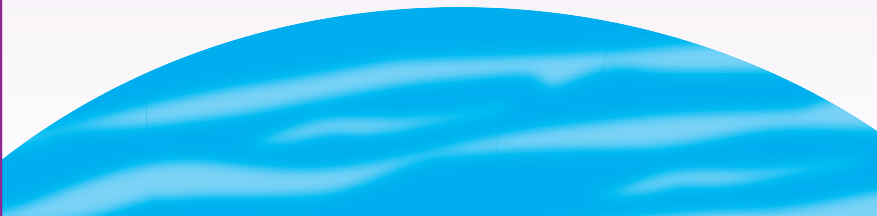
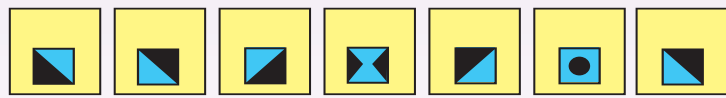
Kid Scoop Puzzler

How Neptune Got Its Name

Neptune appears blue because of a layer of gas that gives it a deep blue color. This blue color inspired scientists to name Neptune after the Roman god of the Sea.

What is the blue gas that gives Neptune its beautiful color? Use the code to find out.

■ = A ■ = E ■ = H ■ = M ● = N ■ = S ■ = T



Double Double Word Search

Find the words in the puzzle. Then look for each word in this week's Kid Scoop stories and activities.

EVAPORATE	C	E	T	A	R	O	P	A	V	E
PRESSURE	E	C	O	B	L	D	Y	E	H	L
NEPTUNE	G	L	B	A	L	D	R	O	N	A
SURVIVE	A	O	L	E	N	U	T	P	E	N
AVERAGE	R	U	O	I	S	S	E	W	V	D
CLOUDS	E	D	W	S	U	R	V	I	V	E
WINDY	V	S	E	P	I	N	S	D	Y	S
SUPER	A	R	E	T	R	I	N	G	S	A
VISIT	P	R	R	S	T	H	G	U	O	R
ROUGH										
RINGS										
BLUE										
LAND										
BLOW										
HOT										

Standards Link: Letter sequencing. Recognized identical words. Skim and scan reading. Recall spelling patterns.

Kid Scoop VOCABULARY BUILDERS

This week's word: **PRESSURE**

The noun **pressure** means a continuous force or action of pressing or bearing down.

The **pressure** on the wound stopped the bleeding.

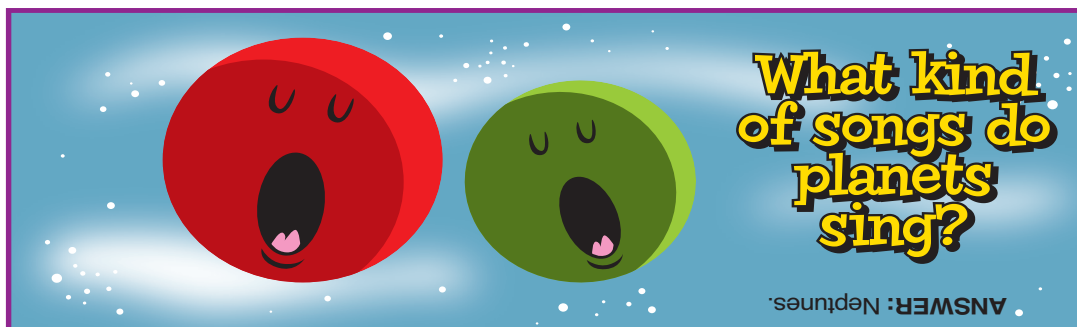
Try to use the word **pressure** in a sentence today when talking with your friends and family.

FROM THE Kid Scoop LESSON LIBRARY

Spacey Math

Circle the largest and smallest numbers on one newspaper page. Subtract the two numbers you have found. Add the two numbers. Repeat with other pages in the newspaper.

Standards Link: Research: Use the newspaper to locate information.



Write On!

Report from Space

Pretend you are living on a space station and write a report about life in space.



CHAD E. CLEMENT, D.D.S., P.C.

New Patients Welcome

Gentle, Personal, Comprehensive Care

Root Canals • Crown & Bridge • Extractions • Implant Restorations • Cosmetic Dentistry • Teeth Whitening

Relaxing riverfront view from all rooms.

(541) 997-3423

1256 Bay Street