



TR Hunter Real Estate

1749 Highway. 101, Florence OR 97439

www.trhunter.com

541-997-1200 • 800-210-7453



Price Reduction

201 Munsel Creek Ln – Adorable home in Florentine Estates across from the clubhouse. Beautiful corner lot with private backyard. Priced right! Make your move! **\$185,900.** #2721-17349333



New Listing

89253 Leverage Dr – Are you looking for a place to call home? This 2 bdrm home with a den is clean and well cared for. It sits on top of the hill overlooking a beautiful garden with a large deck for entertaining. Act fast, this home is priced to sell! **\$199,000.** #2596-16161588



Price Reduction

1220 Bay St – 1144sqft commercial retail unit for sale on Bay Street. Enjoy the benefits of a great location and plenty of foot traffic in Florence's Old Town on Bay Street. Call today for the amenities list and showing information. **\$299,000.** #2691-17404149



14506 Hwy 36 – Beautiful riverfront home on 3.16 acres just before Deadwood. This home boasts 2 bdrms, 1 bath plus a bonus room, dining and kitchen all with river views. What a spot! Fishing right at your door step. **\$198,000.** #2677-17668379



Price Reduction

5445 Little Woahink Dr – Stunning 3 bdrm, 2.5 bath custom home on Little Woahink. The kitchen has solid granite, custom maple and cherry cabinets and matching built-in fridge. 72 Pella triple pane windows with built-in blinds, each one offers a view of trees or the lake. **\$569,000.** #2638-16182112



5495 Savannah Ln – Charming 4 bdrm, 3.5 bath in a private country setting minutes from town. Two master suites, formal dining and plentiful storage throughout. Eat-in kitchen, two pantries and a slider to the large deck overlooking the backyard. RV garage, raised garden beds and irrigation system. **\$475,000.** #2727-17295688



221 Munsel Cr Ln – Florentine Estates. Fully landscaped, 3 bdrm 2 bath log-style home within the quiet setting of this gated senior community. Great room features vaulted ceiling, propane fireplace, butcher-block island and enclosed front porch. **\$210,000.** #2704-17180449



Hwy 101 S – Small subdivision of approx. 10 acre lots offers protective CC&Rs and lots of privacy. Underground utilities installed, high producing wells, septic approved. Located between Woahink and Siltcoos Lakes. **\$182,500 - \$222,500.** #2651-16573558



4837 Summit Ave – Gorgeous panoramic Siltcoos Lake views! Enjoy the incredible views from the living room, master bedroom and deck. 2 bdrm, 1 bath cabin on .34 acre in Westlake! Huge two by shop for your boat, ATV's or RV w/ plenty of room for parking. **\$339,000.** #2731-17565185

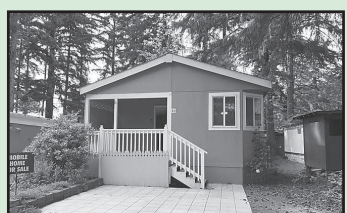
trhunter.com • trhunter.com • trhunter.com



Royal St Georges #48 – Great location for your brand new home near Sandpines Golf Course in a gated community, under construction now. Still time left for you to customize this 1,843 sqft, 3 bdrm, 2 bath home. Includes large 3 car tandem garage and all the amenities of a fine custom home. **\$348,000.** #2711-17074865



94947 Hwy 101 – Perfect little beach cabin with ocean views, bordered by 222 Forest Service acres. 1 bdrm, 1 bath, 363 sqft cabin with large kitchen and vaulted ceilings. Would make a great vacation rental year round. Two lots included totaling 1.19 acres. **\$189,000.** #2609-16006562



89510 Hwy 101 #11 – 2006 double wide home in Buck Lake Park. Immaculate 2 bdrm, 2 bath with peaceful view of the lake and trees. Beautiful laminate floors in living room and hall with carpeted bedroom. Don't miss this opportunity! Mobile only. **\$45,000.** #2725-17388223



Royal St Georges #24 – New construction in Wisteria at Sandpines. This proposed 3 bdrm, 2 bath, 1766 sqft home features vaulted ceilings, large great room, master bedroom with large walk-in-closet, den, cozy covered porch, and 2-car garage. **\$338,000.** #2634-16594804



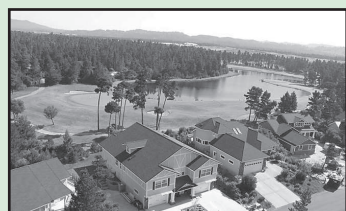
85304 Glenada Rd – Country living one mile from town. 1322 sq. ft. home built in 2012 on almost half an acre. 2 large bdrms. Master with walk-in closet and extra storage in bathroom. Jacuzzi tubs, granite counters, open floor plan, this home has it all. **\$222,000.** #2403-15000399



4842 Seapine Dr – 1989 Mobile on 0.36 acre. Natural greenbelt provides privacy. Kitchen with ample cupboards, dishwasher, oven & refrigerator. 2 bdrms, 1 bath. Laundry, ramps for wheelchairs, and pellet stove. Enclosed porch off living room; back deck to enjoy the outdoors. **\$138,000.** #2700-17432823



88018 Lake Point Drive – Open concept home with abundant views of Heceta Lake. Kitchen has a built-in booth, desk space and rolling island. The large master offers his and her walk-in closets, water closets and vanities. Secluded courtyard, dog run and low maintenance landscaping with an irrigation system. **\$475,000.** #2701-17673338



1035 Royal St Georges Dr – Elegant 3,642 sqft custom golf course home. Incredible lake and fairway views off the back deck. 3 bdrms, 2 full and 2 half baths plus an elevator. High end details throughout. Remodel this rare find. Create your own hobby farm. **\$275,000.** #2669-16333213



35 Easy St – Come relax at the coast in this 444 sqft home. This property has paved parking, room for RVs with RV hookups. Picnic area, garden/hobby shed. Located in the Coast Village community complete with security gate, pool, laundry, rec facility and more. **\$109,000.** #2612-17129165



871 8th St – Large, custom built split-level home on quiet dead-end street. 5 bdrm, 3 bath with lots of living and closet space. Rear deck, fully fenced yard with fruit trees and large storage area with power. Wonderful home in a great neighborhood. **\$397,000.** #2637-16266291



Bernhardt Creek Rd #1700 – Come enjoy your own 1.84 acre waterfront retreat near Mapleton. Zoned F1, so many memories could be had on this private piece of land. Walking path to deep water slough frontage. Fish from your own seat. **\$19,500.** #2687-17082259



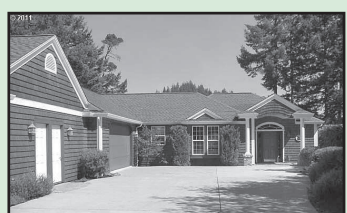
7 Fawn Ridge Lane – Stunning 3 bdrm, 2 bath custom home located in Fawn Ridge West. Large kitchen and living room, formal dining, library/breakfast area, granite counters, hardwood floors and beautiful landscaping. Master suite includes a large walk-in closet, jetted soaking tub, two sinks, walk-in shower, vaulted ceilings and a door to the back deck. **\$499,900.** #2698-17550790



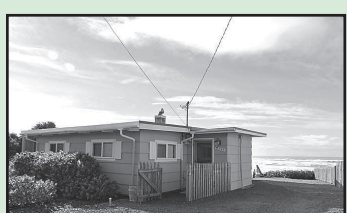
88339 2nd Ave – Enjoy a five minute walk to the beach from this adorable double wide mobile. This delightful 2 bdrm, 1 bath home has a new deck, landings, sheetrock and flooring! Living here would be like being on vacation at the beach every day! **\$137,500.** #2726-17257452



6157 Canary Rd – Almost 5 acres just minutes from Old Town Florence. House built in 1927 sits on gentle slope overlooking trees and valley, including a creek on the property. Remodel this rare find. Create your own hobby farm. **\$275,000.** #2669-16333213



5919 Mercer Lake Rd – 100 feet of Mercer Lake frontage w/white sandy beach & fire pit. Double car garage, large deck, dock, ski shed, 2 workshops w/lofts. Master bedroom & upper bedrooms have private balconies facing the lake. Chef's kitchen w/granite, walk-in pantry, breakfast nook. **\$945,000.** #2706-17079758



88612 3rd Ave – Oceanfront 2 bdrm, 1 bath home just steps from the beach. The open floor plan accentuates the stunning views from the panoramic windows throughout your living room, dining area and kitchen. **\$349,000.** #2674-17111946



88050 River View Ave – 2 bdrm 1 bath Mapleton home near river, shopping, library and just 20 minutes to Florence. Nicely painted inside, with carport plus full basement. Plenty of room to park RV, large yard and just down the street from the public boat dock. **\$174,999.** #2722-17061008



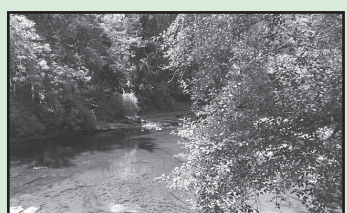
655 Siano Ln – In town fixer with 2-car garage plus large shop in back. Plenty of room for multiple RVs. 2 bdrm, 1 bath home plus an additional studio with its own bathroom. Large room behind shop as well. Sold as is. Take a look, don't miss it! **\$125,000.** #2724-17687257



Sutton Lake Dr #200 – North lakes lot near Sutton Lake, with several large trees and a gravel driveway. Heceta water meter and underground piping for electrical installed in 2017. Septic approval for low pressure bed system. **\$70,000.** #2662-16149446



Hwy 101 S #2000, #2001, #2300 – One of a kind 48 acre Siltcoos Lakefront parcel. Zoned RR1 in Dunes City with potential 6-8 lot subdivision. Visit DunesCityHall.com for community and zoning information. Gated entry, call for an appointment today! **\$575,000.** #2715-17018995



Highway 36 #3001 – Waterfront year round, 1.78 acres in Deadwood. Perfect spot to get away and enjoy fishing at the water's edge or just come play. Water, power and septic would need developed. Property on both sides of Hwy. **\$29,900.** #2608-16093975



Booth Island #1300 – Boat to your own island retreat and play on Siltcoos Lake all day. Fish for Salmon, Steelhead, Trout and Bass. Kayak the Siltcoos River down to the Pacific Ocean. Enjoy nature at its best, all from your front yard. Nearby rentals are available at Westlake Resort. **\$99,000.** #2729-17237076



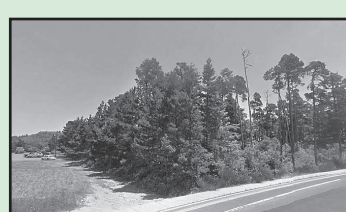
Bonnet Way #31 – Wonderful corner .38 acre lot with possible ocean views from upper stories, located in the gated community of Fawn Ridge West. Seller has building plans available for a large custom home with underground utilities, city water and sewer. **\$99,500.** #2640-16321437



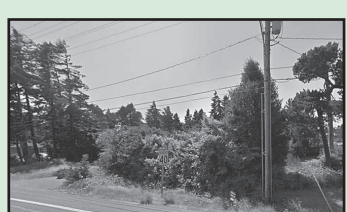
Lake Point Dr #62 – Lakefront lot in the Reserve. Build your dream home here and enjoy the views and paved streets while being close to town amenities. Mostly cleared .28 acre lot near end of street. Septic approved. Heceta Water and power both available. **\$69,900.** #2661-16438702



Armstrong Way #3600 – Peaceful, end of the road privacy on 2 country acres near Florence. Wooded and ready for you to develop how you please. Zoned rural residential. Come see this beautiful piece of property today! **\$80,000.** #2663-16311242



Oak St #1302 – Commercial opportunity near Fred Meyer with all city services available at the property line. Flexible highway zone allows for many commercial and multi-family residential uses. Adjacent lot .6 acre with Highway 101 frontage is also for sale. **\$250,000.** #2695-17282628



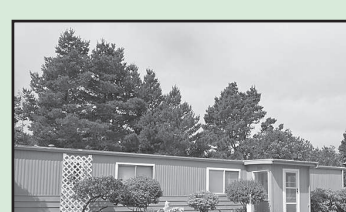
3959 Hwy 101 – Commercial opportunity with Highway 101 frontage located in the North Florence commercial district. Highway District zoning allows for many different uses. The adjacent 1.22 acre lot to the west has frontage on Oak Street and is also for sale. **\$275,000.** #2703-17034510



31st St #3200 & #3300 – Two lots in the gated community of Rhodoview Dunes, in the heart of Florence. Possible horizon/ocean views on both lots. Engineered house drawings available. City services available. **\$29,500.** #2710-17212375



Ocean View Dr #4900 – Views overlooking North Fork slough, ocean, and sand dunes await your custom dream home located in Rhodo View Dunes Estates. This lot is ready to build, with all underground utilities to the lot line and paved road access to the building site. **\$150,000.** #2720-17012629



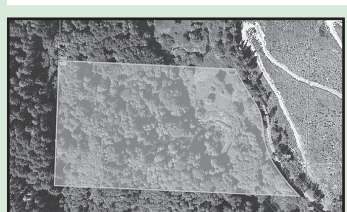
550 Myeena Ln – Corner lot home with new upgrades, landscaping, 3 bdrms, and 1 bath. Centrally located to beach, river, golf course, and town. **\$149,500.** #2733-17542841



Dunewood Dr #54 – Wide elevated corner lot with privacy and views! Overlook dunes and wetlands in this beautiful development with underground utilities, septic approval and Heceta Water. **\$99,900.** #2627-16636856



Fawn Ridge #13 – Large rectangular lot in premiere gated community of Fawn Ridge East. Walking distance to ocean, and only minutes to town, dunes and lakes. Native vegetation and trees for privacy. CC&Rs maintain upscale community vision with no two homes alike. **\$59,000.** #2665-16361179



Upper Deadwood Creek Rd #300 – Beautiful 15.45 acres tucked away in Deadwood. Enjoy a year round creek in this mountain setting. Zoned F2 Impacted Forest, and bordered by 693 Dept of Agriculture acres. Check with Lane County about building possibilities. **\$103,000.** #2636-16348011



River View Ave #1800 – SiuSlaw Riverfront camp/recreation lot! Double carport, new shed, and lots of RV and car parking area. Full deep water frontage. **\$39,000.** #2718-17501420



85337 Hwy 101 – Commercial opportunity on Highway 101 just south of Florence. Great highway frontage and visibility. This property is now cleared and ready for your imagination. **\$79,000.** #2646-16071172



Shoreline Dr #1600 – Stunning river and ocean views from this cul-de-sac lot in gated Shelter Cove. Build your dream home with underground utilities, city water and sewer available. Level and cleared with end-of-road privacy. An engineer's report is on file as well as a home plan. **\$179,000.** #2664-16013673