

# Central Coast Classifieds

JULY 19 • 2017

To Contact Us About Classified Advertising:  
 By Phone:  
**(541) 997-3441**  
 By Fax:  
**(541) 997-7979**

- ▼ **010-230 GENERAL LISTINGS**
- ▼ **240-430 SERVICE LISTINGS**
- ▼ **440-720 REAL ESTATE**
- ▼ **850-900 VEHICLE SALES**

## INFORMATION

Office Hours: 8 a.m. to 5 p.m.  
 Monday through Friday  
 Phone: 541-997-3441 • Fax: 541-997-7979  
 Address: 148 Maple St.  
 PO Box 10  
 Florence, OR 97439

### DEADLINES:

**Wednesday Issue**—Regular classified ads (Starts @ \$31.00 and includes up to 14 words for 4 consecutive issues - excludes garage sales & lost & found), Monday 1 p.m.; Display ads, Friday 5 p.m.; Service Directory - Friday, 5:00 p.m. Boxed, Display Classified Ads & Vehicle/Boat Promos, Friday 5 p.m.

**Saturday Issue**—Regular classified ads (Starts @ \$31.00 and includes up to 14 words for 4 consecutive issues - excludes garage sales & lost & found), Thursday 1 p.m.; Display ads, Wednesday 5 p.m.; Service Directory, Boxed, Display Classified Ads & Vehicle/Boat Promos, Wednesday 5 p.m. TV Listings, Tuesday, 5:00 P.M.

### ADJUSTMENTS:

If your advertisement appears incorrectly, notify us immediately. We will not be responsible for more than one incorrect insertion. Such responsibility is limited to correct insertion of advertisement. No information on the classified pages will be released prior to publication.

Ads are in Area Code 541 unless otherwise indicated in ad.

# 541-997-3441

### 010 ♦ YARD WORK/ LANDSCAPING

Free yard care/work in exchange for storage. Garage, shop, RV barn. 541-997-6999.

**YARD CARE** - Weeding, trimming, brush cutting & property clean-up. Call 541-991-0927.

Yard, brush, gutter cleaning. Dump loads, pressure washing. Handyman. Call Travis Clark 541-590-0414.

**Yard Work** - Yard clean-ups, hauling, trimming, weeds & beds. Low Rates. Free estimates. 541-997-6999.

### 030 ♦ CLEANING SERVICES

Cleaning Services - Friendly, honest & reliable. 16yrs. Experience of quality cleaning. Reference available. To put that extra shine into your home or business. Heidi & Mykaela 541-999-0517.

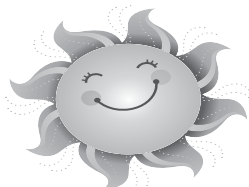
### 115 ♦ HEALTH & FITNESS

BOFLEX TC 20 TREAD CLIMBER - Hardly used, excellent condition. Will help load \$800. 360-348-3724.

### 160 ♦ HELP WANTED

**Administrative Support Specialist** - LCC Florence Center. .860 FTE. Apply On-line: <http://jobs.lanec.edu>. Lane Community College is an AA/EEO/Veterans/Disabilities Employer.

**Executive Director** Florence Habitat for Humanity is seeking an individual desiring to make a measurable difference in our community. The Executive Director provides overall leadership & administration for the affiliate. This position requires strong financial & communication skills with proven results in fundraising and working with volunteers. Have a dynamic personal character that inspires confidence in the mission. For further info, contact 541-999-8411 or 541-902-9227 Letter of interest and resume may be mailed to RHFH PO Box 3302 Florence, Or 97439.



### 160 ♦ HELP WANTED

**Housekeepers** - For 40-room motel. FT must be willing to work hard with a great attitude. Experience preferred but will train. Competitive wages. Apply in person at the River House Inn. 541-997-3933.

**If you love Pizza & Paychecks** - 1285 Restobar has line cook position available. Apply in person. \$100 incentive for 60 days or longer.

**Inside Sales Clerk** - Full-Time position now open. Copeland Lumber Yards is accepting applications for this position. Competitive wages, must be available seven days per week, pre-employment drug testing. Apply in person @ 3231 Hwy 101 N. EOE.

**Laborer's** - wanted for Construction, Farm, & Forestry. Call 541-997-4080.

**Log Truck Driver** - Pay based on experience. Contact Terry Duman @ 541-991-7961.

**Maintenance Worker** - part time person that has general contracting or maintenance experience. Part-Time variable hours, on call for projects on two motels. Send resume to craig@hoaglandproperties.com. Or fax to: 541-997-6263.

**Pro Lumber** - Has immediate opening for Full-Time Delivery Driver & Yard Load Builder. Must have good driving record, pass pre-employment drug screening, lift over 50#, Forklift experience, & good customer service skills. Competitive wages & great work environment. Applications available at store (310 Hwy 101, Florence, Oregon), or request by email.

**Property Management Team** - for 40-unit apartment complex, on Central Oregon Coast. 20hr. management position per week. Comes w/2bdm. Apartment on site. Required good math skills, & computer skills. Maintenance position includes landscape, janitorial, light maintenance work & unit turn over. Wage DOE. Send resume to Property Management Team, C/O Po Box 10, Florence, OR 97439.

### 160 ♦ HELP WANTED

**RN/LPN** - Regency Florence is now hiring for RN/LPN Ft & PT, call Katie @ Regency Florence, 541-997-8436.

**Thousand Trails South Jetty RV Resort** - is hiring seasonal workers for the following positions: Maintenance, Ground-keeping, Housekeeping & Customer Service. Must have a valid driver's License as well as pass a background check. Please apply in person at 05010 South Jetty Road.

**Seasonal Position** - The Port of Siuslaw is hiring for a FT position to perform janitorial, grounds, fueling & maintenance. Full job description at [www.portofsiuslaw.com](http://www.portofsiuslaw.com) or at 100 Harbor St. Applications close July 31, 5 p.m.

**Sandpines** - Bartender/Server, apply at 1201 35th Street. 541-997-1940 ext. 103. FREE Golf!!

**Did You Know?** (NAPSA) - People toss and turn up to 120 times a night, affecting restorative REM sleep. The Yogabed mattress provides optimal support with its Instant Response Foam and YogaGel cooling memory foam to provide the best qualities of memory, latex and gel foams. Learn more at [www.yogabed.com](http://www.yogabed.com).

The LAAM (laparoscopic-assisted abdominal myomectomy) minimally invasive fibroid removal at The Center for Innovative GYN Care is proven to be safer than open or robotic fibroid surgeries and more effective than uterine fibroid (or artery) embolization at preserving for fertility. Learn more at (888) 787-4379.

The effects of trauma, when left untreated, can have a profound impact on a child. The Substance Abuse and Mental Health Services Administration offers tools that can be helpful for supporting a child who may have been traumatized. Learn more by visiting [www.samhsa.gov/child-trauma/understanding-child-trauma](http://www.samhsa.gov/child-trauma/understanding-child-trauma).

### 220 ♦ VEHICLES FOR SALE

**2010 SUBARU OUTBACK**  
 Stk#17T58B  
**Sale Price \$14,500**

**2015 FORD TAURUS**  
 Trade Welcome.  
 Stk#16U112  
**Sale Price \$11,995**

**2011 FORD FOCUS**  
 Stk#16U93A  
**Sale Price \$9,995**

**2012 FORD FUSION**  
 Low Miles. Trades Welcome. Stk#14U61  
**Sale Price \$15,995**

**2007 TOYOTA MATRIX**  
 Stk#15106N  
**Sale Price \$9,995**

**2004 PT CRUISER**  
 Low Miles, 5 speed. Trades Welcome  
 Stk#16U43B  
**Sale Price \$5,995**

**2006 JEEP GRAND CHEROKEE**  
 Stk#17T56A  
**Sale Price \$9,995**

**2010 MERCURY MARINER**  
 Stk#16U82A  
**Sale Price \$12,995**

**JOHNSTON**  
 2150 Hwy. 101, Florence  
**(541) 997-3475**  
**1-800-348-3475**

### 240 ♦ GARAGE SALES

Fri./Sat. 7/21-7/22, 10am-?, No Early Birds, 1607 37th st., Multi-Family Sale, great stuff.

Sat. Only 7/22/17 8am-4pm, 5498 Friendly Acres Rd., 3-party yard sale.

[www.thesiuslawnews.com](http://www.thesiuslawnews.com)

### 240 ♦ GARAGE SALES

Fri.-Sun. 7/21-7/23, 9am-4pm, 1730 W. Park Dr., Estate Sale, furniture household items, antiques, jewelry, clothing, books.

### 290 ♦ ANTIQUES

**ANTIQUÉ FURNITURE AND ESTATE JEWELRY!!!** Will buy, sell & consign quality antique furniture & estate/heirloom jewelry, Gold, silver, platinum, jewelry with precious & semi-precious stones. Call 541-997-8104 Florence Antiques. 494 Hwy 101.

### 300 ♦ FURNITURE

For sale roll-top desk, all wood, gently used. \$150. Call 541-991-0621 after 5pm.

### 400 ♦ MISCELLANEOUS

Two leather sofas, leather recliner, refrigerator, myrtlewood coffee table, cedar chest, garden tools, collector plates, artist Ed Tussey Alaska prints, Japanese tea set, Re noble 1857-1917 art & more. 541-997-1710.

### 430 ♦ STORAGE

**FLORENCE MINI STORAGE**, 4099 Hwy 101 N. 541-997-8557. Call for sizes & prices. Senior/Military discounts. [www.florenceoregonstorage.com](http://www.florenceoregonstorage.com).

### 560 ♦ COMMERCIAL RENT/LEASE

Free yardcare/work in exchange for storage. Garage, shop, RV barn. 541-997-6999.

**600sq ft.**, shop w/large rolling door for rent off 10th St., in Florence. 541-997-1400.

Office Space, completely remodeled. Highly visible. 541-997-6024.

### 850 ♦ VEH. & BOAT PROMO



**1997 TAHOE 4WD**  
 Towing Pkg., CD/AM/FM radio, 200+K mi., New battery, great family car. \$2,800 obo  
 Bill: 541-997-5222



**98 GOLDWING**  
 Red, 43K mi., on board compressor (w/tire hose & gauge), trickle charger (New batt.), VHF, AM/FM/tape deck, intercom, reverse gear. \$5,675. 541-902-7928  
 Accessories also avail. call for items & prices



**1991 F-150 & CAMPER SHELL**  
 4WD, All Power, good cond., V-8, 2 gas tanks, too many items to list. Look & Drive. \$5,500  
 541-991-1720

### 850 ♦ VEH. & BOAT PROMO



**1959 SKAGIT BOAT 16FT**  
 Rebuilt 25hp Evinrude OB. Very good condition!  
 \$1,959 BO/Trade  
 541-361-6524



**2007 EVEREST 33'**  
 Model 293P, 1 owner, slides for king bed & living/dining, new tires, MORyde sus., Exc. cond.  
 \$16,000  
 Dan 541-588-0142

### 850 ♦ VEH. & BOAT PROMO



**2012 POLARIS RZR XP900**  
 Only 24 running hours. Covered in garage, maintained, like new. Trailer, tie downs included. \$13,500  
 541-991-3467 or cell 707-239-2322

**LYNNETTE WIKSTROM**  
 Broker  
 (541) 997-7777 EXT 118 OFFICE  
 (800) 999-5343 TOLL FREE  
 (541) 997-7159 FAX  
 (541) 999-0786 CELL  
[lynnette@cbcoast.com](mailto:lynnette@cbcoast.com)  
**COAST REAL ESTATE**  
 100 HIGHWAY 101  
 PO BOX C  
 FLORENCE, OR 97439

**For Every Real Estate Listing in Town, See: [www.trhunter.com](http://www.trhunter.com)**

**New Listing**  
 89253 Leverage Dr - Four miles north of Florence sits a beautiful home on top of the hill. Well cared for 2 bdrm, 2 bath with a den. Large front deck, perfect for entertaining, overlooks a colorful garden. Clean and move-in ready. Seller is motivated! \$199,000. #2596-16161588

**Price Reduced**  
 1220 Bay St - This 1144sqft commercial unit is waiting for your new store or restaurant. Located on Bay Street next to the historic Siuslaw Bridge, this location offers plenty of foot traffic from locals and visitors alike. Call today for the amenities list and viewing appointment. \$299,000. #2691-17404149

**1749 Highway 101 • 541-997-1200**

Single-wide mfd home with many updates, located on a quiet cul-de-sac. Open style living room & kitchen. Garage has been converted to a fantastic bonus room. Enclosed breezeway. RV parking with hookups. \$119,000  
 List #799/17400740

Ranch style 3 bdrm, 2 bath home in beach area neighborhood of Idylewood. Open style living, dining & kitchen. Slider off dining area to private covered patio. Master bedroom suite. Double car garage has utility hookups. \$248,000  
 List #796/17198936

**Just Reduced**  
 Beautiful home with 3 bdrms, 3+ baths, on .89 acre lot overlooking a private arm of Munsel Lake. 3-car garage with workshop space. 3 stories of living space with walkout basement. Private dock. \$630,000 List #778/17207770

Siltcoos Lake edge home with 3400+ sq. ft. of living space & 3 bdrms. Multiple decks & balconies. Private dock. 5.95 acres of property. Double attached garage & separate storage buildings. \$795,000  
 List #791/17442666

Cozy beach area 2 bdrm, 1 bath mfd home with bonus room. Corner lot with a fully fenced yard. Furniture & appliances included. Cute back deck. \$139,500 List #774/17168219

1870 HWY 126, SUITE A  
 PO BOX 3040  
 FLORENCE, OR  
 FAX 541-997-7654  
 VISIT US ONLINE AT  
[WWW.JIMHOBERG.COM](http://WWW.JIMHOBERG.COM)

**WEST-COAST REAL ESTATE SERVICES, INC.**  
**541-997-7653**

- RESIDENTIAL
- LAND
- COMMERCIAL
- PROPERTY MANAGEMENT

One bdrm, one bath condo in the heart of Florence. Near shopping, medical, library & parks. Affordable option to own your own place, or have as investment property. Updated carpet & paint. \$59,900 List #800/17579175

.82 Acre lot located in the gated community of Shelter Cove just off Rhododendron Drive within Florence City Limits. Fantastic views of the Siuslaw River and the great Pacific beyond. \$189,000 List #798/17193245