

Free shuttle service to Wings and Wheels

Those planning to attend Wings and Wheels at the Florence Municipal Airport can use the free park-and-ride service provided by the Rhody Express.

A shuttle will be making regular trips starting at 9:45 a.m. servicing the Oregon Coast Military Heritage Museum and the Wings and Wheels Fly In & Car Show.

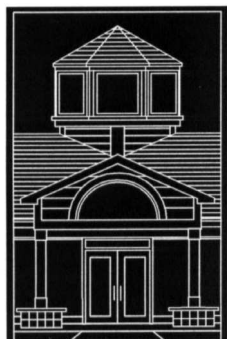
Park at the Siuslaw Middle School parking lot or Florence

Senior Center, board the Rhody Express and catch a free ride to the events. Return trips to the Senior Center and middle school will be made regularly throughout the day.

The Rhody Express will operate from 9:45 a.m. to noon and 12:30 to 3:15 p.m.

For more information, call Rhody Express at 541-902-2067. The shuttle is provided by the City of Florence and Rhody Express.

Library Tidings



News about the Siuslaw Public Library

Library Tidings, a regular feature of the Siuslaw News, features news about upcoming Siuslaw Public Library programs for adults and children, new books and videos, and other library news of interest to the community.

Library Tidings by Kevin Mitghe Adult Services Librarian Siuslaw Public Library (541) 997-3134

Book Review "To Be A Machine" By Mark O'Connell

Transhumanism is a movement pushing the limits of our biology — of our senses, intelligence and life spans.

It has been quietly exerting its influence on technology for decades, but in the last few years it has achieved critical mass, finding support among some of the biggest names in Silicon Valley and beyond.

In "To Be A Machine," journalist Mark O'Connell explores the staggering possibilities that present themselves when readers think of the body as an outmoded device.

O'Connell visits the world's foremost cryonics facility to witness how some have chosen to forestall death. Then O'Connell discovers an underground collective of biohackers enhancing the senses by implanting electronics under the skin and then meets with members of the Machine Intelligence Research Institute, a team urgently investigating how to protect mankind from falling victim to artificial superintelligence.

Through this journey, O'Connell presents a singular, entertaining look at a growing

movement, and an exploration of the ancient yearning to transcend our animal condition — a desire as primal as the oldest religions, as elemental as the ancient myths.

In investigating what it means to be a machine, he offers a surprising meditation on what it means to be human.

Pete Seeger:

The Man and the Music

On Thursday, July 29, at 6 p.m., the library will present "Pete Seeger: the Man and The Music." Musical duo Hank & Claire take listeners back in time with banjo and 12-string guitar as they sketch the line from folk legend Pete Seeger's passion for social justice issues — labor, war, civil rights and the environment — to the music Seeger inspired.

Learn the back stories and sing along with songs like "Where Have All the Flowers Gone?" and "Turn, Turn, Turn."

Pacific Northwest duo Hank Payne and Claire Favro — with their guitars, psalteries, banjo and dulcimer — celebrate the legacy of live acoustic music-making. Interpreting a contemporary or standard song, digging into traditional or composed

mountain music, or sharing Hank's award-winning original tunes, they sing terrific stories with rich harmonies.

This program is free and open to the general public.

Wildlife of the Dunes

The library will present local author and Oregon Dunes enthusiast Dina Pavlis to discuss wildlife of the dunes at 1 p.m., Saturday, July 8, in the library's Bromley Room.

Spanning more than 40 miles, the Oregon Dunes boast over 400 species of wildlife, according to Pavlis. Attendees will learn about the birds and animals of the dunes and how volunteers are partnering with the U.S. Forest Service to save the landscape.

Participants will receive information about how to volunteer for dunes restoration projects and threatened species protection efforts in the Siuslaw Region.

This program will be followed at 3 p.m. by a workshop of the Oregon Dunes Cooperative Weed Management Area, teaching attendees how to identify, report and control non-native invasive weeds in or near the dunes.

Both programs are free and open to the general public.

240 HOURS

Is your family prepared?

If an emergency happens in our community, it may take emergency workers some time to reach you. You should be prepared to take care of yourself and your family for a minimum of 240 hours.

Get your emergency kit started with these essentials:

- Battery powered radio
- First aid kit an manual
- Sleeping bags and blankets (wool or thermal)
- Manual can opener
- Waterproof/windproof matches
- Water storage (1 gallon/person/day)
- Water purification tablets
- Non-Perishable Food
- Utility knife
- Emergency candles
- Extra eyeglasses and contact lenses
- Essential medications

This message brought to you by the West Lane Emergency Operations Group. www.wleog.org



IDENTIFY • PREPARE • SURVIVE

Voice Your Opinion! Write to: EDITOR@THESIUSLAWNEWS.COM

Florence Municipal Airport
SATURDAY JULY 1ST 10AM-3PM
 Trophies will be awarded at 3pm.
 Suggested Donation: \$2.00 per car - Proceeds Benefit Siuslaw H.S. Wrestling Team

WLCF seeks education scholarship candidates

Western Lane Community Foundation (WLCF) has announced that its third-annual Continuing Education Scholarships program for 2017 includes eight scholarships totaling \$10,500.

These scholarships are awarded annually and are designed for students who use permanent home addresses within the Florence/Mapleton school district, have graduated from high school in a prior year, have obtained their GED, and/or other nontraditional students, such as those who were home schooled and are eligible to enter higher education or trade schools.

Applicants such as second, third, and fourth-year college students, students entering post-graduate programs, or adults returning to higher education, trade schools or special arts programs after career or family changes are also encouraged to apply.

Scholarships are available for traditional four-year universities, colleges, community colleges and approved trade

schools. One of the scholarships is in the amount of \$3,000 and is designed for a student majoring in a Lane Community College (LCC) nursing program or taking credits for admission to the Nursing Program either in Eugene or Florence.

Those who meet the minimum qualifications are encouraged to complete an application, accompanied by a copy of their transcript of grades through senior year of high school or any completed post high school education, two letters of recommendation, and a resume including honors and awards, clubs, community service and work history for the last five years.

Applications can be obtained online or at LCC and application packets can be submitted online at wlcwlcw@wlcwlcw.org, or mail to P.O. Box 1589, Florence, OR 97439.

The postmark deadline is June 30.

GIVING BACK

NON-PROFIT SPOTLIGHT

C.R.O.W.

(CHILDREN'S REPERTORY OF OR WORKSHOPS)

Q: Describe your organization.

A: C.R.O.W. is a 501 (c) 3 organization dedicated to building character, providing safe and constructive educational activities, and shaping responsible young adults by providing youth with professional caliber performing arts opportunities.

C.R.O.W. strives to help children and young adults tap into their individual creative potential in surprising new ways, and to improve basic singing, dancing, acting, and communication skills.

Q: What are your greatest accomplishments so far, this year?

A: C.R.O.W. recently awarded \$4000 to local youth who could not attend summer theatre camps through scholarship funding provided by donors and grants. C.R.O.W. recently mounted a highly successful mainstage musical version of "The Addams Family," which received rave reviews.

Q: Do you have a personal story, that describes the impact your organization has had in the community?

A: Wow! There are far too many to list! But one of the best moments occurred just a few days ago when I was making phone calls to let families know that they had received scholarship funds for C.R.O.W.'s 2017 summer camp program. One particular family submitted a heartbreaking application, detailing the numerous struggles that they had endured, and what really stuck out was that this was a one income home, and the parent

was on disability. The child had a propensity and love for the arts, but would not have been able to afford the tuition for camp. So, when I called to share the good news, the parent burst into happy tears and said, "You have made such a difference in my child's life. Thank you, thank you, thank you."

Just knowing that we can provide these kinds of opportunities for our local kids, who need and deserve high-quality arts education, makes all of the hard work and struggle worthwhile. It was a warm-fuzzy kind of moment, and I felt blessed to be able to add some light to that particular family's sadness.



Q: What is your current greatest need? (Choose one)

A: We desperately need to finalize the renovations on the back of our building. There is a misconception that because our doors are open, we are done and don't need any more help. But that couldn't be more wrong! Although we are utilizing our building, we only have access to the front portion. The back portion (which is where we will put a dressing room for boys and girls, green room, storage and workshop space, and small cast member restroom) is currently bare cement floors and spider webs. Simply put, we desperately need donations and funding to make the building operate effectively for the kids. We have about \$25,000 yet to raise, and I hope the generous community of Florence who has believed in us and helped us achieve such an amazing feat can help us get the rest of the way there for our local kids. "We've come a long way, baby! But we still need Florence's help!"

Q: Describe your organizations personality in three words.
 A: Innovative. Whimsical. Crucial.

C.R.O.W.
 PO Box 184, Florence, OR 97439
 541-999-8641



Join us for Dawn's Going-Away Pizza Party

Saturday, July 1st 5-7pm

\$12.50 pp... ALL YOU CAN EAT PIZZA.
 Many varieties will be offered through out the party.

JERRY'S PLACE Bar & Grill

Open Daily 541-997-3815

88274 Rhododendron Dr. (Rhododendron and Heceta Beach Road)



All Creation's Construction
 Chad Clement, D.D.S., P.C
 County Transfer & Recycling
 First Baptist Church
 Florence Heating & Sheet Metal, Inc

Florence Pharmacy
 Jack Mobley Construction Inc.
 Oregon Pacific Bank
 Swanson Pest Management