



Thank You Florence
for Voting us



"We're next to the Bridge"
100 Hwy. 101, Florence, OR



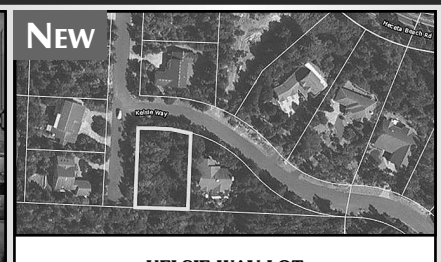
COAST REAL ESTATE

541-997-7777

FEATURED LISTINGS FOR THE WEEK OF APRIL 5TH, 2017



NEW
LOCATION. LOCATION. LOCATION.
This beautiful in-town home is located in the middle of everything. 5 BR, 3 BA home is roomy enough for a growing family or separate living spaces. Ground floor features 2 BR, 1 BA, kitchenette area, laundry room, storage area, living area with slider to private backyard area. Upstairs, large master with walk-in tub & slider to deck, 2 more bedrooms, guest bath, open living room with beautiful brick fireplace & insert, built-in shelves, dining room & slider onto deck for grilling. The kitchen is updated with granite, double ovens, stainless steel appliances & storage galore. Power stairlift included if needed. Double car garage with workspace & storage. Wonderful home in a great neighborhood. **\$395,000** #11425 MLS#17034162



NEW
KELSIE WAY LOT
On the corner of Kelsie Way and Heceta Parkway is a level lot on .34 of an acre. Septic installed and water and power at the lot line. This is in Heceta South - a development of homes within about a mile from Heceta Beach. You will find lovely homes all maintained with pride of ownership. Buy now; build later; priced right. **\$55,000** #11434 MLS#17472197



REDUCED
SANDPINES EAST
Very popular Siuslaw model home under construction. 2 BD, 3 BA with Casita. Open floor plan w/ designer touches throughout. Quartz countertops in the kitchen, custom soft close cabinets, SS appliances. Features include a private courtyard, covered patio, roll-in shower, ductless heat pump. Sandpines East gated community includes ponds and a nature walking trail for the owners and guests that parallels the golf course. **\$293,820** #11386 MLS#16008578



NEW
7659 BERNHARDT HEIGHTS ROAD
Wonderful river and valley views. County shows 4 bedrooms, but there are six with closet space. Property will not qualify for a conventional, VA or FHA loan due to its condition. Peaceful and quiet. **\$289,900** #11433 MLS#17244173



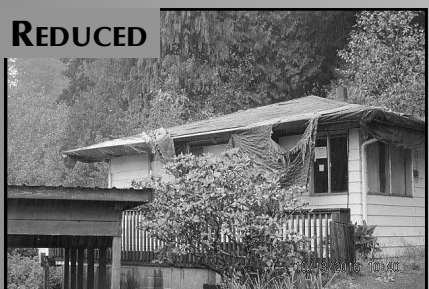
REDUCED
COAST VILLAGE
Well cared for Park Model travel trailer. Cozy cottage w/half bath. Great bunkhouse for guests. Large shop/tool shed for storage. **\$47,000** #11367 MLS#16357600



DEVELOPMENT OPPORTUNITY
Development property in the heart of Florence. 16 acres next to Sandpines Golf Course. 37th & Oak access point, 35th Street frontage. Heavily wooded and filled with native vegetation for privacy. Ready for your next development project. Flexible pricing strategies. 12.5 acres available for **\$667,000**. 3.56 acres available for **\$285,000**. All 16 acres for **\$750,000** #10994 MLS#15426589



SILTCOOS LAKEFRONT CRAFTSMAN
14 acres on a secluded Siltcoos Lake cove. A delightful Carter Brothers built craftsman home with outstanding views and extraordinary quiet. 2+ bedrooms, separate guest/caretaker cabin, large garden with greenhouse, boat dock, large garage and shop. The ultimate secluded lakefront home! **\$795,000** #11298 MLS#16551744



REDUCED
491 PLATEAU ST - GARDINER
Extensive rehab work needed, structure is sound, some potential exists in the location and the view from the upper level. **\$49,900** #11374 MLS#16506487



RESTORED TRADITIONAL
lake home in Westlake/Dunes City with Siltcoos Outlet access & private dock. Lots of storage in full basement, workshop & tandem 2 car garage. Private backyard, terraced w/covered, heated deck for entertaining. Master bedroom suite & sun room overlook river. Family or game room upstairs. **APPOINTMENT ONLY SHOWINGS!** **\$464,000** #11410 MLS#17293339



83051 SILTCOOS STATION RD.
This is your place in the country. Located on 5+ acres on Siltcoos Station Road, this 2240 sq. ft., 2007 Barrington has a 30x30 attached garage. This is an exceptional and rare opportunity. Beautifully placed with a spacious, livable floor plan, full appliance package and several upgraded options. This home has been carefully maintained and gently owner occupied. Enjoy the privacy and be comfortable with the quality. **\$359,000** #11393 MLS#16557673



PACIFIC NORTHWEST TIMBER FRAME HOME
Overlooking Woahink Lake. 1.4 acres of park-like grounds. Massive Western Red Cedar timbers and stone work. 4 bedroom suites, 4.5 baths, 2911 square feet. Alder cabinets and doors throughout & granite slabs. Covered patio with stone fireplace. Pull through oversized garage. Boat dock down at the lake. It's all here ready to enjoy! Shown by appointment only. **\$975,000** #11302 MLS#16602775



HISTORICALLY SIGNIFICANT - CIRCA 1899
Built as a homestead stagecoach stop for travelers on their way to the coast. Wonderfully maintained/restored farmhouse with 3+ bedrooms, 1.5 baths, 1920 sq ft on 11+ acres with old barn, RV parking with hook-ups, great decking with hot tub. Great period interior details filled with a sense of history, yet modernized for comfortable rural living. If your love & interest rests in coastal history, you have found it here! **\$289,500** #11424 MLS#17084401



99 OUTER DRIVE
Well maintained home features 1995 park model manufactured home with large added living room, mud room, laundry and second bathroom. Workshop in back of home, access off back deck. Large side deck. Shared driveway. **\$120,000** #11401 MLS#17268642



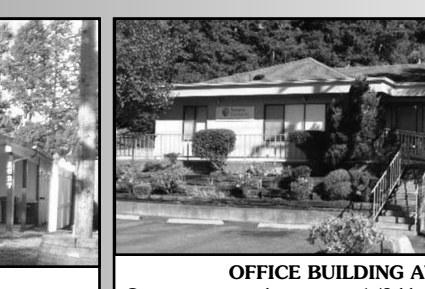
179 LAUREL STREET UNIT 11
Perfect Old Town getaway or an investment as a vacation rental. Fully furnished. Quaint 2 bedroom condo, tastefully decorated with private balcony & storage. Distinctive Northwest design with views of river & bridge in the heart of Old Town. **\$219,000** #11411 MLS#17429386



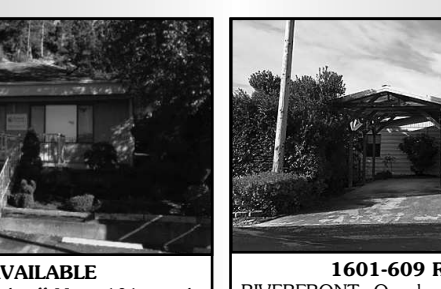
1901 28TH PLACE
Large, in-town home with plenty of parking and end of road privacy. House is all one level. Sliding door directly to large backyard. Bonus room. Very clean and ready to move into. **\$279,000** #11406 MLS#17380379



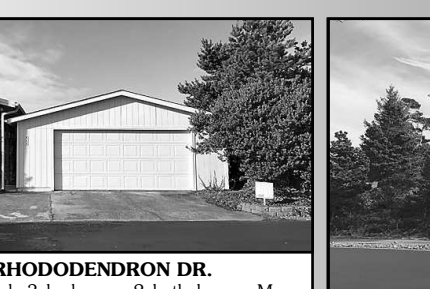
1635/1637 30TH ST.
Newer duplex in the heart of town. Range, refrigerator, microwave, disposal, tile and carpet floors with ceiling fans. Double pane vinyl windows. Vinyl fencing w/backyard storage units. Close to schools, city college and shopping. Live in one and rent the other or rent both. **\$285,000** #11392 MLS#16210516



OFFICE BUILDING AVAILABLE
Great commercial property: 1/2 block off Hwy. 101; ample street and lot parking; 1660 sq. ft. on .30 acre lot; Wheelchair ramp entrance; Reception-entry area; general and private office areas; lab area; two 1/4 baths; six multi-purpose meeting rooms. Great condition; Great opportunity, Locate your business here! Great Price! **\$255,000** #11366 MLS#16333396



1601-609 RHODODENDRON DR.
RIVERFRONT. One level, 3 bedroom, 2 bath home. Many upgrades throughout including newer carpet, interior paint & tile flooring in bathrooms. Separate master suite with entrance to deck. Large utility room. Enclosed walk way to home. Oversize garage. RV carport. Artist studio. Deck and stairs to the river. This home has it all. **\$215,000** #11267 MLS#17307656



SHELTER COVE
Come build your new home in this beautiful gated community of fine homes. Views of the Siuslaw River and Pacific Ocean are just across the street at the viewing area. Power, water & sewer are available. Come live the Oregon Coast. **\$59,900** #11414 MLS#17054351



Florence Homes App:
Download Today!
Search from your mobile device