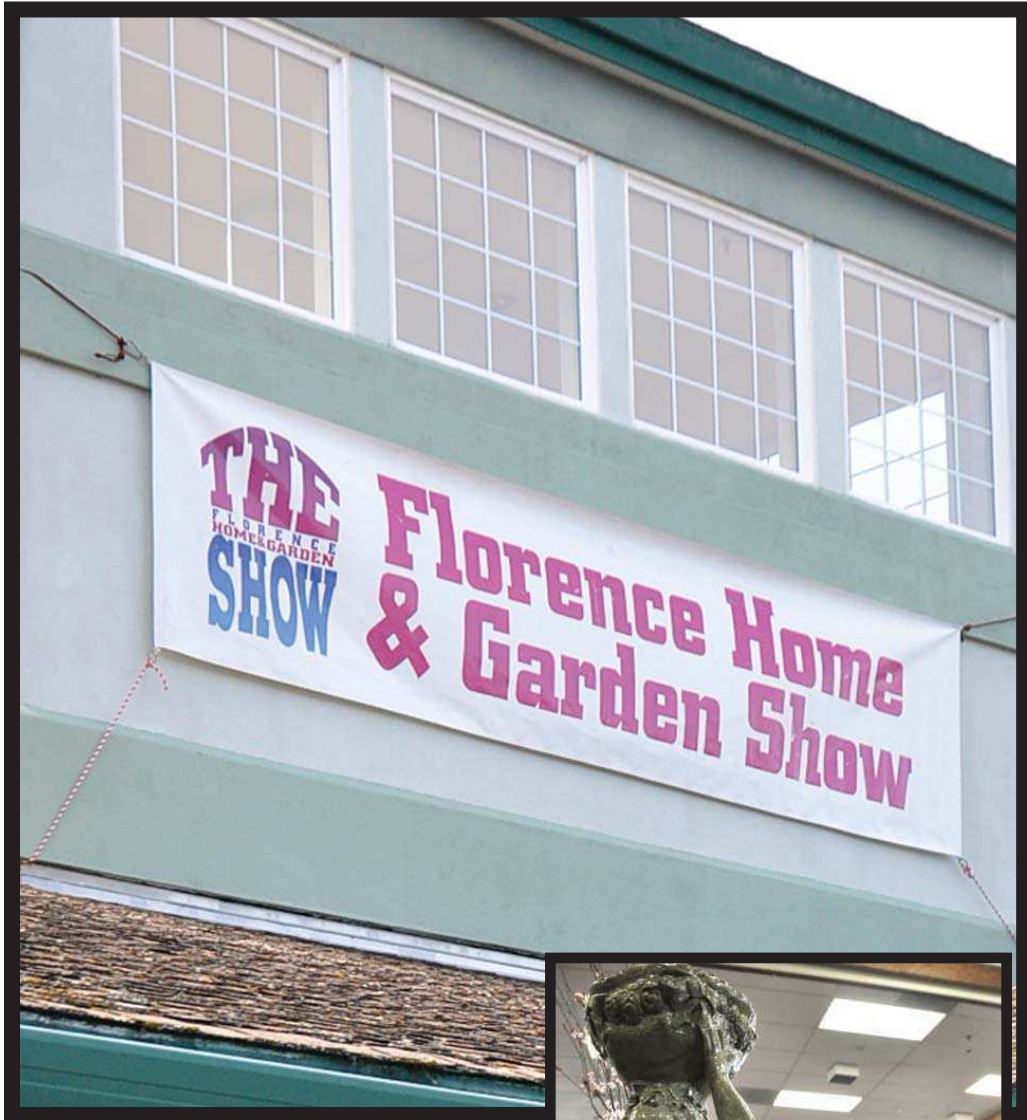


MARCH 2017

Home and Garden

Night at the theater



This year's event will include dozens of home and garden improvement vendors.

There will be a few new twists when the 21st annual Florence Home and Garden Show opens at the Florence Events Center on March 3. Those twists include tiny homes, tractors and fairy gardens.

"This could be the best show we've ever had," said promoter Jon Thompson.

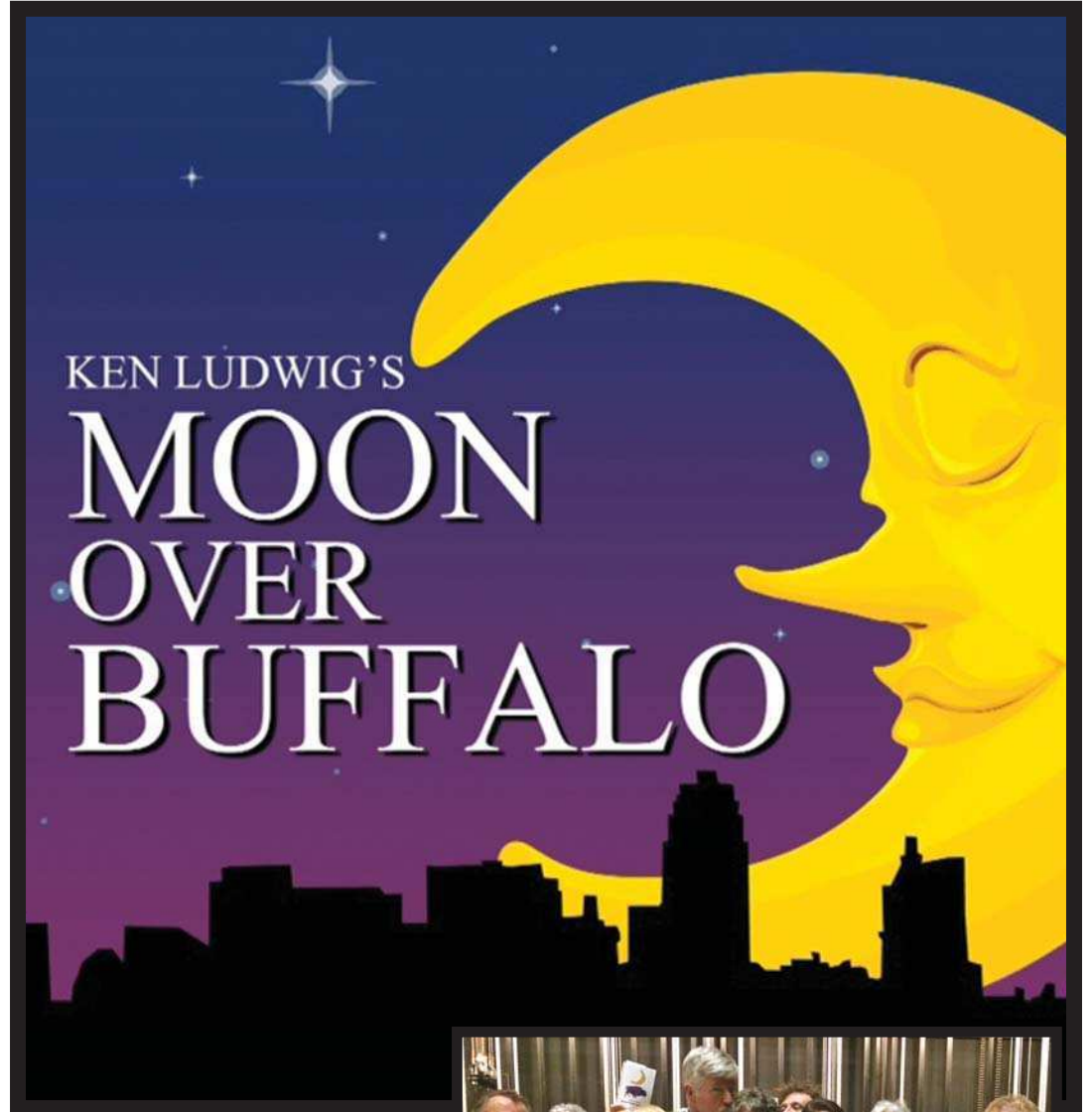
That's because outside a display by Tiny SMART Homes of Albany will show off the finer points of living small. Alongside the tiny homes will be the nearly 100 percent recycled greenhouse from window purveyor Mark and Company, and a wide selection of lawn and garden tractors from Mid Valley Tractor.



Tiny homes can range in size from just under 100 square feet to a palatial 350 square feet, and the models produced by SMART also include sustainable and eco-friendly features without having to give up comfort.

Marcelle Fisher, with Forbes Magazine, said "compact-home living can still be just grand," adding they can be "simple, more affordable and

Home (Page 3)



Cast and crew members from Last Resort Players' upcoming production.

Fly over the moon with Last Resort Players' (LRP) "Moon Over Buffalo" on March 17 to 19 and 24 to 26 at the Florence Events Center.

In the madcap comedy tradition of "Lend me a Tenor," the hilarious "Moon Over Buffalo," by Ken Ludwig, centers on George and Charlotte Hay, played by John Bachman and Judy Adams, fading stars of the 1950s. At the moment, the Hays are playing two shows in rep in Buffalo, New York, with five actors.

On the brink of a disastrous split-up caused by George's dalliance with a young ingenue, they receive word that they might just have one last shot at stardom: Frank Capra is coming to

town to see their matinee, and if he likes what he sees, he might cast them in his movie remake of "The Scarlet Pimpernel."

Unfortunately for George and Charlotte, everything that could go wrong does go wrong, abetted by a visit from their daughter's clueless fiancé and hilarious uncertainty about which play they are actually performing, caused by Charlotte's deaf old stage-manager mother who hates every bone in George's body.

Moon (Page 3)

ALSO INSIDE THIS ISSUE

Gallery One (page 2)



FlorenceFest (Page 3)



SEAc coast (Page 4)

