

## FEC to offer pet photos for Valentines Day

On Saturday, Jan. 21, from 10 a.m. to 2 p.m. you are invited to bring your pet to the Florence Events Center to have him/her photographed in a very special Valentine's Day Booth.

Photographs cost \$5 and the proceeds will go to the Oregon Coast Humane Society. The only request is that animals be held, or kept on a leash.

The Friends of the FEC are celebrating animals during the months of January and February in Gallery One with the themed exhibit "For the Love of Animals."

Paintings, photography, mixed media and 3-D art are interspersed with photos of animals up for adoption at our

local shelter.

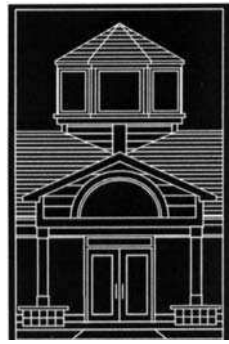
There will be raffle tickets sold during the Jan. 21 reception, with the winning ticket being drawn at 2 p.m. (need not be present to win). A framed oil painting of your pet by talented local artist Ron Hildenbrand will be the raffle prize.

There will be refreshments for people and their pets, and admission is free. All that is asked is that guests bring a donation of dog or cat food to place in a special collection container.

All animal lovers are encouraged to attend this event, whether you are a pet owner or not.

For more information, call 541-997-4277.

## Library Tidings



### News about the Siuslaw Public Library

Library Tidings, a regular feature of the Siuslaw News, features news about upcoming Siuslaw Public Library programs for adults and children, new books and videos, and other library news of interest to the community.

Library Tidings by Kevin Mittge Adult Services Librarian Siuslaw Public Library (541) 997-3134

### Book Review "Nobody Rich or Famous: A Family Memoir"

By Richard Shelton

In "Nobody Rich or Famous", author Richard Shelton immerses us in the hardscrabble lives of his Boise, Idaho, clan during the 1930s and '40s. Using a framework of journals, road trips, and artful storytelling, Shelton traces three generations of women.

We meet his mother, Hazel, a model of western respectability, who carefully dresses in her finest clothes before walking into a bar and emptying a loaded handgun in the general direction of her husband.

We meet his great-grandmother, Josephine, who homesteads a sod shanty and dies too young on the Kansas prairie.

We follow his grandmother, Charlotte, as she grows from a live-in servant girl to a fiddle-playing schoolteacher who burns through two marriages before taking up with the iceman and providing Shelton one of his few refuges.

Known for his storytelling, Shelton, a professor emeritus at the University of Arizona, crafts a tale of poverty and its attendant sorrows: alcoholism, neglect and abuse.

But the tenacity of the human spirit shines through.

This is an epic tale of Steinbeck proportions, but it is not fiction. This is memoir and family history, in its finest tradition, illuminating today's cultural chasm between the haves and have-nots.

In the author's words, "Nobody Rich or Famous" is "the story of a family and how it got that way."

### Free Computer Lab

Did you get a new technology device for the holidays? Are you wondering how to get online, send an email, or read a book with your new eReader?

Join a library staffer for the next open house computer lab, which will be on Tuesday, Jan. 24, from 1:30 to 3 p.m. in the library's conference room.

This is a chance to ask all your "techie" questions.

### Finding Your Roots class

Librarian Kevin Mittge will be offering two basic classes in starting your family history research. The first "Finding Your Roots" will be this Friday, Jan. 13, from 1 to 3 p.m. in the Siuslaw Room.

The second, "Finding

Records" will be on Friday, Jan. 27, from 1 to 3 p.m. in the Siuslaw Room.

The classes complement each other but can be taken separately.

The first is a general class on how to start your family history research, while the second will look more specifically at what kinds of records are available, where to find them, and how to use them.

Space is limited to 10 participants, so you must sign-up at the reference desk.

### Mapleton Branch

The Mapleton library is located at 88148 Riverview Ave., in the Lion's Club Building. With a nice view of the Siuslaw River, it's a wonderful, warm place to sit and enjoy a good book or read the newspaper.

The library also has books, magazines, DVDs and videos, recorded books, Internet computers, wireless Internet access, a rotating art display and more.

Hours are Tuesday through Saturday, noon to 5 p.m.

### Holiday Closure:

**In honor of Martin Luther King's Birthday, the library will be closed on Monday, Jan. 16. Regular hours resume on Tuesday, Jan. 17.**

## Mapleton School Board meets tonight

Mapleton School District will recognize the contributions of its Board at the Jan. 11 meeting at Mapleton High School.

Mapleton will join 196 other Districts statewide in celebrating the important work it's board members do.

According to District Superintendent Jodi O'Mara the individuals that serve on

the board are essential to the fulfillment of the district's mission.

The next Mapleton School District Board meeting is scheduled for Wednesday, Jan. 11 at 6 p.m. and parents, students and community members are invited to attend.

For more information call 541-268-4312.

## WLCF 2017 grant applications now being accepted

Western Lane Community Foundation (WLCF) has announced its annual Discretionary Grant Program is accepting applications immediately for the 2017 grant cycle.

Grants are awarded to local nonprofit organizations for projects and programs in the areas of education, medicine and science, the arts and social and civic services.

Money given each year varies. However in February of 2016, the grant program distributed more than \$71,000 to 39 nonprofit recipients covering most of western Lane County.

Information, guidelines, and



COURTESY PHOTO

Western Lane Community Foundation grant recipients for 2016.

applications can be downloaded at [www.wlcfonline.org](http://www.wlcfonline.org)

or call 541-997-1274.

Applications must be

received no later than close of business on Jan. 15, 2017.

## County Health officials confirm seven flu-related deaths

On Friday, Lane County Public Health officials confirmed 11 outbreaks of influenza-like-illness have been reported within the last 30 days in Lane County, six of which have been within the last week.

In this same time span in Lane County, seven people have died due to influenza — four in the last week.

"I think it is clear from the number and rate of outbreaks that our vaccination rates here in Lane County are far too low," said Dr. Patrick Luedtke, Lane County Chief Health Officer. "It's certainly not too late to receive your flu vaccination and while we will always have reports of individuals contracting influenza after receiving the vaccination, at a population level it is evident that widespread vac-

cination can and will prevent outbreak scenarios like what we're seeing now."

While it is difficult to accurately compare the current flu season with previous years until after the season has ended, both the number of reported outbreaks and deaths are on track to be at their highest since 2012.

Additionally, this season is unique in that there seems to be a bi-modal distribution in cases, with an initial peak happening in early December and a likely second peak in mid to late January.

Influenza, or the flu, is a contagious respiratory illness that is caused by a virus. It is spread by droplets made when people cough, sneeze or talk.

It is also possible to transmit flu by touching a surface or object that has the flu virus

on it, and then touching their own mouth, nose or eyes. The average incubation period for flu is two days but can range between one to four days.

Those with flu can infect others beginning one day before symptoms develop in five to seven days after becoming sick.

Symptoms include a fever (100 °F or higher), cough, sore throat, runny or stuffy nose, body aches, feeling very tired, vomiting or diarrhea.

Not everyone that has flu has all of these symptoms.

In addition to yearly flu vaccination in adults, health officials are urging the highest risk groups (e.g., persons aged 65 years or older, children, pregnant women, persons with cardio-pulmonary disease and the immunocompromised) to prioritize vaccination.

Some, particularly the elderly population, may also

benefit from the use of the newly available high dose or adjuvant vaccine.

Finally, it is important for all individuals to practice proper respiratory hygiene by covering their cough or sneeze; washing hands frequently or using hand sanitizer; disposing of tissues used for coughing or sneezing in a receptacle that is out of reach to children; avoiding touching the eyes, nose and mouth; and by staying home up to 24 hours after a fever has resolved.

Individuals can receive the flu vaccine at participating pharmacies or from their health care provider.

For more information on influenza, visit the Lane County Public Health website at [www.lanecounty.org/government/county\\_departments/health\\_and\\_human\\_services/public\\_health](http://www.lanecounty.org/government/county_departments/health_and_human_services/public_health).

## Cindy Wobbe Estate Sales

### ESTATE SALE

05445 Little Woahink Drive

1/13-14, 9am to 3pm. Complete liquidation of this fabulous lakeside home of Christine May & Carol Retzer! Queen bedroom set, 2 dining sets, Ekornes chair, misc. office furniture, name brand ladies clothing, small appliances, woodwork & garden tools, camping gear, great kitchen & household goods. **Don't miss this one!** Credit cards accepted. Directions: Hwy. 101 south, left on Canary.

Professional Ethical Experienced

View online photos at

[www.CindyWobbeEstates.com](http://www.CindyWobbeEstates.com)

## Focus on the big picture

We'll help the pieces fall into place



We know the world of investments may be hard to navigate, and that's why we're here to help. Our team of trained professionals can assist you with all the details so we can work toward realizing your goals.

Make an appointment and start investing in your future today!

**Oregon Pacific Financial Services**

1365 HIGHWAY 101 • FLORENCE • 541-997-3090

Not FDIC Insured • Not Bank Guaranteed • May Lose Value  
Not Insured by Any Federal Government Agency • Not a Bank Deposit

Securities offered through LPL Financial, Member FINRA/SIPC.  
Insurance products offered through LPL or its licensed affiliates.  
Oregon Pacific Financial Services and Oregon Pacific Bank are not registered broker/dealers nor affiliates of LPL Financial.

CRUISE

River cruising is one of the most popular vacations, offering fascinating destinations, inspiring itineraries and experiences, fine cuisine and excellent service. Go beyond the cities and see quaint riverside towns and breathtaking landscapes. Begin your river journey today! Let the travel agents at Premier Travel help you start planning your next vacation!

**Hurry....offer expires soon!**

- Great value!! 2 for 1 pricing
- Discounted or Free international air
- Shipboard credit on select sailings

\*Offer expires May 31, 2017. Subject to availability. Shipboard credit has restrictions and is available on select sailings.

*premier travel & cruise* TRAVEL LEADERS®  
541-747-0809 • 1011 Harbor Rd Ste 102 • Springfield, Oregon 97477

DIRK'S

**Best Burger!**

We serve Breakfast and Lunch!

Donuts • Bagels  
Biscuits and Gravy • Breakfast Burritos  
Deli Sandwiches and so much more!  
Open 7 Days a week!  
Eat in or call for take out!

1136 Hwy. 101 • Florence • 541-997-8630

Visit us online: [www.TheSiuslawNews.com](http://www.TheSiuslawNews.com).