

# Siuslaw News Sports & Recreation

SPORTS

## Calendar

### Winter sports openers:

**Nov. 30**

• SHS GIRLS BB  
HOSTS CRESWELL  
6 P.M.

• SHS BOYS BB  
HOSTS CRESWELL  
7:30 P.M.

**Dec. 1**

• SHS WRESTLING  
HOSTS REEDSPORT  
6 P.M.

**Dec. 9**

• MHS GIRLS BB  
AT FALLS CITY  
5:30 P.M.

• MHS BOYS BB  
AT FALLS CITY  
7 P.M.

## TIDE TABLE

Entrance Siuslaw River

High Tide    Low Tide

**Nov. 26**  
10:32am / 6.8    4:30am / 2.0  
11:34pm / 5.5    5:27pm / 0.4

**Nov. 27**  
11:05am / 6.9    5:11am / 2.1  
6:02pm / 0.1

**Nov. 28**  
12:16am / 5.6    5:48am / 2.3  
11:37am / 7.0    6:37pm / -0.1

**Nov. 29**  
12:55am / 5.7    6:24am / 2.4  
12:09pm / 7.0    7:11pm / -0.2

**Nov. 30**  
1:33am / 5.8    7:00am / 2.5  
12:42pm / 7.0    7:45pm / -0.3

**Dec. 1**  
2:11am / 5.8    7:36am / 2.7  
1:14pm / 6.9    8:20pm / -0.2

**Dec. 2**  
2:50am / 5.8    8:13am / 2.8  
1:48pm / 6.7    8:56pm / -0.2

## LADIES IN WAITING



PHOTOS BY NED HICKSON/SIUSLAW NEWS

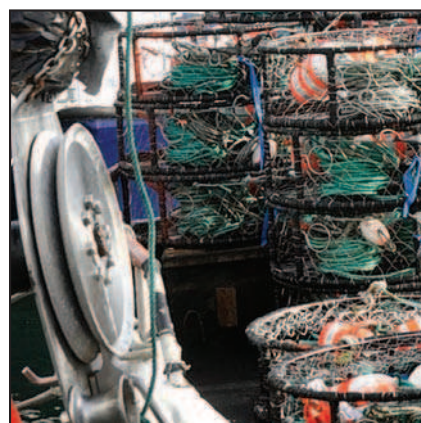
The Oregon Department of Fish and Wildlife's decision to postpone the start of commercial crabbing season until after the traditional Dec. 1 opening means boats will be sitting along the docks a while longer.

## DUNGENESS DAY DELAYED

The traditional Dec. 1 opening of the commercial Dungeness crab season along the entire Oregon coast will be delayed due to concerns about domoic acid levels in some areas.

During recent testing, domoic acid in crab viscera from the Garibaldi area was above the alert level that normally triggers action. In addition, the overall trend indicates domoic acid in other areas may be increasing as well.

Based on these results and consultations with the Oregon Department of Agriculture (ODA), the Oregon commercial Dungeness crab industry, and Washington and California departments of Fish and Wildlife, the Oregon Department of Fish and Wildlife (ODFW) is exercising an



abundance of caution and delaying the ocean commercial Dungeness crab season along the entire Oregon coast.

"Oregon's commercial crab industry and the department place a high priority on making sure that seafood

consumers can be confident that they are buying a safe, high-quality and sustainable product when they purchase Oregon Dungeness crab," said Caren Braby, ODFW Marine Resource Program Manager.

ODFW will continue to work closely with ODA and the Oregon commercial Dungeness crab industry to test crab along the coast to ensure an opening of the commercial crab season on safe and high quality crab.

In close coordination with ODA and the Oregon commercial Dungeness crab industry, ODFW plans to evaluate options for opening the commercial season once additional domoic acid test results are

See **DELAY 3B**

## On the Bite

A WEEKLY FISHING REPORT FOR THE LOCAL REGION

[www.dfw.state.or.us/RR](http://www.dfw.state.or.us/RR)

### MID COAST LAKES

Holdover trout will be available in most lakes. Fishing for the various warm water fish species will slow as water temperatures cool. There are numerous lakes in the Florence area that can provide good opportunity.

Siltcoos and Tahkenitch lakes are open for wild coho until Dec. 31. Fishing has been fair to slow. Casting spinners near the weed lines and trolling plugs or spinners can be effective on fish that recently entered the lake.

### SIUSLAW RIVER: Chinook

The Siuslaw River and bay is open for Chinook salmon. Fishing is slow.

Trolling herring in the lower bay is an effective technique. Eggs and bobber can be productive in the upper bay and river.

### ALSEA RIVER AND BAY: Chinook, steelhead

The Alsea River and bay is open for Chinook salmon. Fishing is slow. Fish are throughout the bay and river. Eggs and bobber can be productive in the upper bay and river as the season progresses.

Steelhead fishing opened on the Alsea River on Nov. 1. Fish are entering the mainstem with the first entering steelhead near the town of Alsea. Casting spinners, drifting bait or using a bobber and jig can be effective.

• Open for hatchery steelhead Jan 1 through Apr. 30 and Nov. 1 through Dec. 31.

• No fishing from a floating device upstream from Mill Creek.

### SALMON RIVER: Chinook

The Salmon River and bay is open for Chinook salmon. The run is near the end but a few fish are still entering the system.

Trolling herring in the lower bay is an effective technique. Eggs and bobber can be productive in the upper bay and river as the season progresses.

Parking can be limited at Knight Park during the fall salmon return. Anglers are reminded that from Knight Park boat ramp to Sulphur Creek through Dec. 31, angling is restricted to single point hook metal lures, fly angling, or salmon

See **FISHING 3B**

## Siuslaw News

148 Maple St.  
Florence, OR  
97439

541-997-3441  
[www.thesiuslawnews.com](http://www.thesiuslawnews.com)



Find us on Facebook

2840 Rhododendron Dr., Florence, Oregon. 97439  
541-997-4277

Shelter Hours: Mon, Tue, Th, Fri, Sat: 11am - 4pm.  
Sun: 1pm - 4pm • Closed Wed.

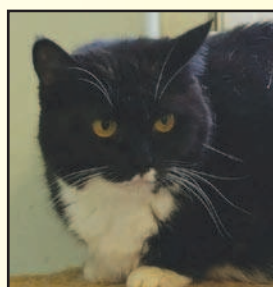
<http://www.oregoncoasthumanesociety.org>



## Looking for Love



This is *Isadora*, a quiet and well-mannered six-year-old lady. She thought she hit the jackpot in the spring of 2015 when a wonderful lady in a retirement community adopted her. Unfortunately her adopter's health failed and she was back at our shelter a year later. Won't you give her another chance at her forever home? We think she's "Is-A-Dorable"!



is on a special diet that is easily found in pet supply stores. Won't you consider giving Ivanhoe his forever home?

*Ivanhoe* is a very handsome gentleman. He has always been a very sweet and affectionate boy. Ivanhoe was born in our shelter, so he has never known anything beyond the shelter walls. He would love to come home with you and be your big, orange couch potato. Ivanhoe