

crossword fun

**Grey's Anatomy**

Thursday at 8 p.m. on **KATU, KEZI**

A consultant's arrival can be worrisome, as the doctors learn in the new episode "Why Try to Change Me Now." The more intrusive the newcomer is, particularly in the operating room, the worse the situation gets. Amelia and Owen (Caterina Scorsone, Kevin McKidd) can't keep their troubles confined to home. Debbie Allen, also an executive producer and frequent director of this show, returns as Catherine. Ellen Pompeo and Justin Chambers also star.



**Last Man Standing**

Friday at 8 p.m. on **KATU, KEZI**

Eve's (Kaitlyn Dever) gap-year break from education prompts Mike (Tim Allen) to show her just how tough life can be, but she surprises him with her reaction in the new episode "A New Place for One of Our People." Kyle (Christoph Sanders) gets inventive with his wedding gift for Mandy (Molly Ephraim), and technology plays a big role in his intended plans. Nancy Travis, Amanda Fuller, Jordan Masterson and Hector Elizondo also star.



**The Mistletoe Promise**

Saturday at 8 p.m. on **HALL**

After a chance meeting, Elise Donner and Nicholas Derr (Jaime King, Luke Macfarlane) discover that, while they may be strangers, they share disdain for the Christmas season. Dreading the prospect of several weeks of enforced faux cheer, the pair agree to offer mutual support as needed. As they spend more time together, however, Elise and Nicholas find their relationship is not merely one of convenience in this new 2016 romance based on a book by Richard Paul Evans.



The identity of the featured celebrity is found within the answers in the puzzle. In order to take the TV Challenge, unscramble the letters noted with asterisks within the puzzle.

Across

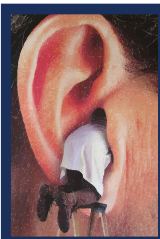
1. Hanks and Welling
5. Early "Tonight Show" host
9. "\_\_\_ Beach" (1988-91)
10. Actor Edward James \_\_\_
12. Catholic or Episcopal
13. Chocolate-covered caramel candy
16. "\_\_\_ Age: The Meltdown"; 2006 animated film
17. Initials for Paul Simon's partner
18. "Caught on \_\_\_ With Nick Cannon"
20. J-M connection
21. Word after Rose, Sugar and Peach
23. Actress Rudolph
25. Actor Nicholas \_\_\_
26. Joan of \_\_\_; film role for Ingrid Bergman
27. Five hundred six
28. Dr. Topher \_\_\_; role on "The Night Shift"

Down

29. Taxi alternative
30. Rowers' needs
32. Prefix for read or run
33. Number of seasons for "Frasier"
38. Acuff's initials
39. ... FDR, HST, DDE, JFK, LBJ, RMN, \_\_\_ ...
41. In just \_\_\_; very soon
42. Email provider for millions
43. Wading bird
45. "For Whom the Bell \_\_\_"
47. Word in the title of a New Year's Eve song
48. Man whose brother killed him

4. Gilbert, for one
5. "\_\_\_ Little Rich Girl"; Shirley Temple movie
6. Actor Molinaro
7. "What \_\_\_ \_\_\_, chopped liver?"
8. Actor on "NCIS" (2)
9. Grouch
11. \_\_\_ Ward
14. Initials for Felix's roommate on "The Odd Couple"
15. Sabrina \_\_\_ Beauf
18. Role on "Modern Family"
19. "World's largest bookstore"
22. The Carpenters' "\_\_\_ Only Just Begun"
24. Opera solo
29. Egg on
31. Mineo's namesakes
34. "The \_\_\_ Show With Stephen Colbert"
35. Scrooge, for short
36. "Star Wars: Episode \_\_\_ - Return of the Jedi"
37. Singer James
40. Recipe verb
42. Schooner drink, perhaps
44. Suffix for light or length
46. Initials for actor Bean

Solution  
Mimi Kennedy



**Best For Hearing**

WHEN EXPERIENCE COUNTS

We go to *EXTREMES* to solve your hearing problems!

2285 Highway 101  
Florence, OR 97439

(541) 997-8866

BestForHearing.com



AMERICAN  
OWNED & OPERATED