

Wandering Wheel Film Festival returns to Florence

Wandering Reel Traveling Film Festival makes its return to Florence with a collection of films sure to stir the consciousness of the local community.

In this collection of award-winning short films entitled: Generation Juxtaposition, young and old come together in this program that juxtaposes the wise nature of the elderly with the spirited vulnerability of youth.

And oftentimes, vice versa.

Film goes get two chances to catch the program at City Lights Cinemas, 1930 Highway 101, on Tuesday, Oct. 25. The first showing will be at noon, followed by an evening screening at 6 p.m.

Each screening will be followed by a Q&A discussion with festival director Michael Harrington.

For more information and the complete list of films, visit www.wanderingreel.org.

Shorewood to host second annual veterans fundraiser

Shorewood Senior Living, 1451 Spruce St., will be having a veterans fundraiser Friday, Nov. 4, from 10 a.m. to 1 p.m.

Last year, the Shorewood's event raised more than \$4,000 thanks to the generous vendors and residents of Florence.

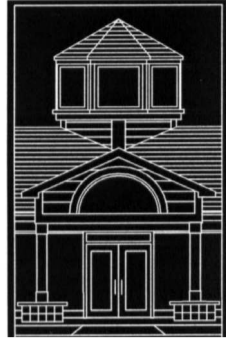
All funds raised were donated to American Legion Post 59 and Florence Area Veterans Relief Agency (FAVRA), to be used for our local veterans.

This year, Shorewood would like to beat that amount. For every veteran that walks through the door, Shorewood and local sponsors will donate \$25 to the local Veterans of Foreign Wars post #3232.

More than 160 veterans attended last year's event.

The free event is open to the public and will include barbecue, refreshments, a 50/50 raffle, military vehicles and a special musical performance.

Library Tidings



News about the Siuslaw Public Library

Library Tidings, a regular feature of the Siuslaw News, features news about upcoming Siuslaw Public Library programs for adults and children, new books and videos, and other library news of interest to the community. Library Tidings by Kevin Mittge

A Truck Full of Money

By Tracy Kidder
Book Review

Tracy Kidder is known for his contemporary nonfiction narrative classics such as "Mountains Beyond Measure" and "Home Town."

His latest book, "A Truck Full of Money," turns his attention to Paul English, the co-founder of the travel website Kayak.com. Even though he suffers from bipolar disorder, he is one of the world's greatest living computer scientists.

He has been called the "Pied Piper" of geeks, using his energy, optimism, kindness and own special abilities to bring together a variety of minds to tackle computer and Internet problems.

After earning a "truck full of money" when he sold Kayak, English's first thought was how to give it away. His next thought was "What next?" as he moves on to his next Internet creation.

A biography of a fascinating man, an exciting industry and science, and written by a remarkable writer, A Truck Full of Money will appeal to many readers.

Ned Hickson to speak at library today

Author and Siuslaw News editor Ned Hickson will be speaking today, Oct. 12, beginning at 1 p.m. at the library.

Hickson, a nationally syndicated humor columnist and author of "Humor at the Speed of Life," has a new book out, "Pearls of Writing Wisdom: From 16 shucking years as a columnist."

Join Ned for a discussion of his two books and tips for writers and aspiring writers.

Free storytelling workshop

There are still openings for the Storytelling Workshop that will be offered by the Portland Story Theater on Saturday, Oct. 22, from 2 to 4 p.m.

They will be teaching "intentional storytelling," where people will learn how to tell stories improvisationally by being resourceful and using the power of spontaneity.

Workshop size is limited to 25 participants, so pre-registration is required.

Stop by the Reference Desk at the library or call 541-997-3132 to register.

Urban Storytellers to perform

Portland Story Theater will be performing its Urban Tellers program on Saturday, Oct. 22, at 7 p.m. in the library's Bromley Room.

Urban Tellers is a part of the phenomenon that has been seen all around the country: real, true stories told on stage in front of a live audience.

For more than 12 years, Portland Story Theater has been leading the way to create a unique fusion of wit and bare-bone emotion expressed on stage.

These touring story shows are filled with personal stories and bring the culture of community to life. The space is intimate and relaxed with just the storyteller and you.

Portland Story Theater was founded by Lawrence Howard and Lynne Duddy, and they will be joined by Beth Rogers, Penny Walter and Howard Bulick.

Both this performance and the earlier workshop are sponsored by generous grants from the Autzen, Kinsmen and Miller Foundations and are free and open to the general public (18 or older).

COAST RADIO'S Original Great Pumpkin Giveaway

**THURSDAY
OCT. 20TH
at
Old School
Furniture/
Florence
Saw Shop**

**Voice Your Opinion! Write to:
EDITOR@THESIUSLAWNEWS.COM**

Medicare annual enrollment begins Saturday

Annual open enrollment for Medicare starts next week, and Oregon's Senior Health Insurance Benefits Assistance (SHIBA) Program is available to help.

Medicare is health insurance for people 65 years or older or younger than 65 with Social Security Disability Income.

People living in Oregon who are 65 years or older may be eligible to sign up and find

health insurance that best meets their needs. Medicare covers many medical costs, including visits to the doctor, prescription medications and preventive care, such as mammograms, colonoscopies, diabetes and blood pressure screenings.

Medicare annual enrollment runs Oct. 15 through Dec. 7. Any Medicare Advantage (MA) or prescription drug plan (Part D) changes must be made between these dates so that coverage begins without interruption on Jan. 1, 2017.

Those who are late to enroll may face a lifetime of premium penalties.

"It is important to compare Medicare Advantage and prescription drug plans every year," SHIBA Program Coordinator Lisa Emerson said. "Plans change year to year, as do people's individual health care needs. People could potentially save money by shopping for a new plan."

SHIBA provides free insurance counseling to explain how the Medicare program works, additional insurance options that work with Medicare, and help with reducing out-of-pocket costs.

SHIBA staff members, along with over 200 certified counselors, serve many of Oregon's more than 760,000 Medicare beneficiaries to help them understand their Medicare benefits and enrollment options.

Free, unbiased, one-on-one assistance is available by calling 1-800-722-4134 (toll-free) or visiting OregonSHIBA.org.

SHIBA counselors help beneficiaries compare plans and enroll by using the plan finder tool found online at www.medicare.gov/find-a-plan.

Beneficiaries and their families can also choose to use this tool to compare plans and enroll on their own. Tips from SHIBA to prepare for Medicare Open Enrollment: Review your plan notice. Be sure to read any notices from your Medicare plan about changes for next year, especially your Annual Notice of Change letter.

Think about what matters most to you. Medicare health and drug plans change each year and so can your health needs. Do you need a new primary care doctor? Does your network include the specialist you want for an upcoming surgery? Is your new medication covered by your current plan? Does another plan offer the same value at a lower cost?

Take stock of your health status and determine if you need to make a change. Find out if you qualify for help paying for your Medicare.

Learn about programs in your state to help with the costs of Medicare premiums, your Medicare Part A (hospital insurance) and Medicare Part B (medical insurance) deductibles, co-insurance and co-payments, and Medicare prescription drug coverage costs.

You can do this by visiting Medicare.gov or making an appointment with a local certified counselor.

Tips from SHIBA when comparing health insurance plans:

- Find your insurance cards. You may need your red, white and blue Medicare card to review benefit details or enroll in a new plan. If you have a

Medicare Advantage or prescription drug plan, you may also need that card.

- Update your list of prescription drugs. Check with your doctor to make sure you understand each prescription. Is a generic available? Can you eliminate unneeded medications? Based on your list, do you have the right plan?

- Use the Medicare.gov plan finder. The plan finder uses your prescription list to compare prescription drug and Medicare Advantage health plans in your area. Not all companies cover the same drugs so it's important to have a complete list of your medications and dosages when using this tool.

- Contact your doctor, hospital, and pharmacy before making changes. Not all health and drug plans contract or work with the same providers. If you switch plans, make sure you understand which providers you can see for the best price.

- Apply for help with drug costs. If you have limited income and assets, you may qualify for extra help with prescription drug costs. SHIBA counselors can help you apply for this benefit through Social Security.

SHIBA also publishes an annual Medicare guide, which will be available online this month and in print in mid-November.

To meet with a counselor, contact the toll-free SHIBA Helpline at 1-800-722-4134. You will be asked to enter your ZIP code to be connected to a program in your area.

Visit www.OregonSHIBA.org to find a copy of the 2017 Oregon Guide to Medicare Health Plans or to find a free Medicare 101 class in your area.

New help for Medicare costs!

Premium assistance (Part B)

To qualify, monthly gross income less than:

Single
\$1,337
(no resource limits)

Couple
\$1,803
(no resource limits)

Prescription cost assistance (Part D)

To qualify, monthly gross income less than:

Single
\$1,485
(savings and other resources are less than \$13,640)

Couple
\$2,003
(savings and other resources are less than \$27,250)

**Call Oregon Medicare Savings Connect:
Toll-free 1-855-447-0155**

M-F, 9am-5pm medicaresavings@multco.us www.multco.us/medicaresavings

This publication was produced by the State of Oregon with financial assistance through a grant from the Administration for Community Living. These comments do not necessarily represent the policy of the U.S. Department of Health and Human Services and the grantee should not assume endorsement by the Federal Government.

PacificSource Medicare Advantage Plans

Attend one of our free seminars to learn more.

Florence – Florence Events Center
715 Quince Street
Thursday, October 20, 10:00 a.m.

855-265-5969 priority code: 403 | 800-735-2900 (TTY)
Medicare.PacificSource.com

For accommodation of persons with special needs at sales meetings call 855-265-5969 or 711 TTY. PacificSource Community Health Plans is an HMO/PPO plan with a Medicare contract. Enrollment in PacificSource Medicare depends on contract renewal. A salesperson will be present with information and applications. You must continue to pay your Medicare Part B premium. Limitations, copays and restrictions may apply. Benefits and premium may change on January 1 of each year. Y0021_327MED_2017 CC Event Flyer CMS Accepted 09182016

Deadlines for press releases and news items are Mondays and Thursdays at noon.

pressreleases@thesiuslawnews.com

MOOD INDIGO

Sat, Oct 15, 2:00 pm
Florence Events Center
Tickets: 541.997.1994

Merrill Lynch

COLLIS WEALTH MANAGEMENT GROUP

The Eye Center
John H. Haines, MD
Kerri A. Kastrup, MD

theshedd.org/JazzKings