

# THE RECORD

## POLICE LOG

### Florence Police

Sept. 8

Theft from vehicle was reported in the 1600 block of Maple Street.

Fraud was reported in the 2000 block of Highway 101.

Theft was reported in the 1700 block of 20th Street.

Fight was reported in the 1800 block of Oak Street.

Trespass was reported in the 1600 block of Maple Street and the 1500 block of Airport Road.

Dispute was reported in the 1200 block of 20th Street.

Illegal camping, lodging was reported in the 900 block of Tamarack Street.

Hit-and-run accident was reported in the 2400 block of 16th Street.

Sept. 9

Accident, with unknown injury, was reported at milepost 184 on Highway 101.

Child abuse was reported in the 2100 block of 41st Street.

Dispute was reported in the 87100 block of Munsel Lake Road.

Illegal camping, lodging was reported in the 500 block of Rhododendron Drive.

Theft was reported in the 1700 block of 43rd Street, the 800 block of Highway 101 and the 300 block of Kingwood Street.

Sept. 10

Theft was reported in the

block of 4700 block of Highway 101, the 1500 block of Ninth Street, the 1900 block of 28th Place and the 4900 block of Highway 101.

Animal abuse was reported on Nopal Street.

Menacing was reported in the 4700 block of Highway 101.

Assault was reported in the 500 block of Ivy Street.

DUII was reported in the 4700 block of Highway 101.

Sept. 11

Dispute was reported at Harbor Vista Park and the 1800 block of Highway 101.

Accident between a vehicle and bicycle was reported at milepost 21 on Highway 126.

Fight was reported in Tye Campground.

Assault was reported in the 1400 block of Bay Street.

Trespass was reported in the 2200 block of 19th Street.

Accident, without injury, was reported on Rhododendron Drive.

Sept. 12

Disorderly was reported in the 5900 block of E. Glenada Road.

## IMPOUNDMENT



13249

A male Yorkie #13249 has been impounded at the Oregon Coast Humane Society. Call 541-997-4277 or stop by the shelter at 2840 Rhododendron Drive to claim.

Visit OCHS on the web at [florencehumane.org](http://florencehumane.org).

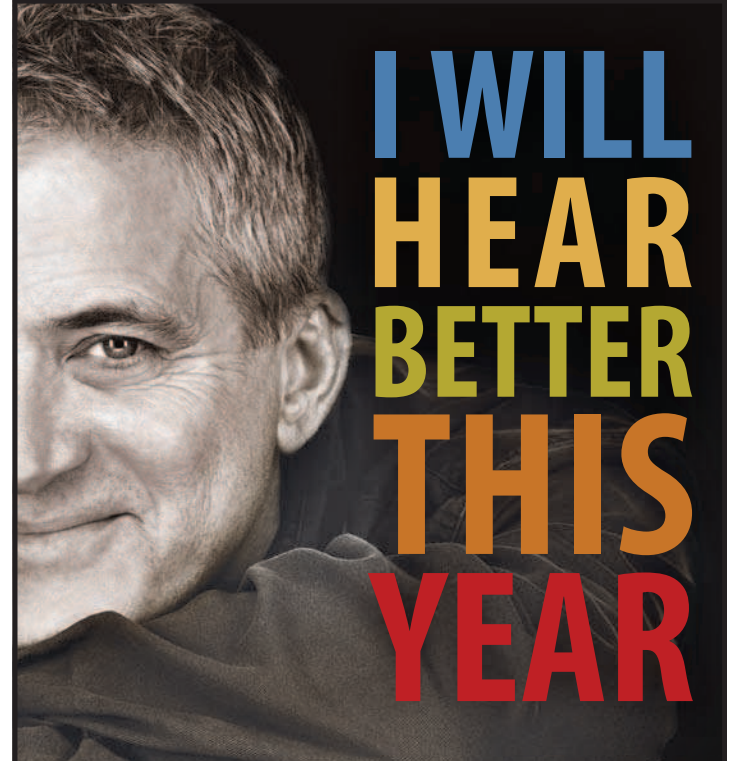
## Western Lane Ambulance District Ambulance Runs Aug. 22-27

| Date    | Time | Area                            | Type    |
|---------|------|---------------------------------|---------|
| 8/22/16 | 0752 | Saltaire Street                 | Medical |
| 8/22/16 | 0938 | Transfer to McKenzie-Willamette | Medical |
| 8/22/16 | 1022 | 43rd Ave                        | Medical |
| 8/22/16 | 1156 | Wild Wind Street                | Medical |
| 8/22/16 | 1233 | Ninth Street                    | Trauma  |
| 8/22/16 | 1249 | Highway 126                     | Medical |
| 8/22/16 | 1302 | Ninth Street                    | Medical |
| 8/22/16 | 1321 | Kingwood Street                 | Medical |
| 8/22/16 | 1332 | Highway 36                      | Trauma  |
| 8/22/16 | 1547 | Transfer to PeaceHealth         | Medical |
| 8/22/16 | 1700 | Transfer to Spruce Point        | Medical |
| 8/22/16 | 1752 | East Mapleton Road              | Medical |
| 8/22/16 | 2006 | 21st Street                     | Medical |
| 8/22/16 | 2212 | Transfer to RiverBend           | Medical |
| 8/23/16 | 0214 | Ninth Street                    | Medical |
| 8/23/16 | 0320 | Rhododendron Drive              | Medical |
| 8/23/16 | 0627 | Transfer to RiverBend           | Medical |
| 8/23/16 | 0728 | Ninth Street                    | Medical |
| 8/23/16 | 0837 | Twin Tree Court                 | Medical |
| 8/23/16 | 1322 | 21st Street                     | Medical |
| 8/23/16 | 1337 | Highway 101                     | Trauma  |
| 8/23/16 | 1401 | Highway 101                     | Medical |
| 8/23/16 | 1429 | Siltoos Station Road            | Medical |
| 8/23/16 | 1435 | Shore Crest Drive               | Medical |
| 8/24/16 | 0330 | Rhododendron Drive              | Medical |
| 8/24/16 | 1040 | Ninth Street                    | Medical |
| 8/24/16 | 1259 | Ninth Street                    | Medical |
| 8/24/16 | 1446 | Transfer via Reach Flight       | Trauma  |
| 8/24/16 | 2227 | 45th Street                     | Medical |
| 8/25/16 | 0417 | 34th Street                     | Medical |
| 8/25/16 | 0851 | Outer Drive                     | Medical |
| 8/25/16 | 1010 | Mitchell Loop Road              | Medical |
| 8/25/16 | 1324 | Highway 101                     | Medical |
| 8/25/16 | 1540 | Transfer to PeaceHealth         | Medical |
| 8/25/16 | 1818 | Siltoos Station Road            | Medical |
| 8/25/16 | 0725 | Twin Tree Court                 | Trauma  |
| 8/26/16 | 0731 | Ninth Street                    | Medical |
| 8/26/16 | 0922 | North Fork Road                 | Medical |
| 8/26/16 | 0949 | Sailors Ravine Court            | Medical |
| 8/26/16 | 1125 | Transfer to RiverBend           | Medical |
| 8/26/16 | 1230 | Highway 101                     | Medical |
| 8/27/16 | 0825 | Outer Drive                     | Medical |
| 8/27/16 | 1048 | Upas Street                     | Medical |

## BIRTH

**FISHER**—Liam Dennis Fisher, a boy weighing 7 lbs., 2.5 ozs., was born to Trinity Marie Ramos and Michael Allen Fisher of Florence on Sept. 14, 2016, at 8:25 a.m., at PeaceHealth Peace Harbor Medical Center.

**Deadlines for press releases and news items are Mondays and Thursdays at noon.**  
[pressreleases@thesiuslawnews.com](mailto:pressreleases@thesiuslawnews.com)



- Full Diagnostic Hearing Testing
- Hearing Aid Fitting, Repair, and Service
- The Only Doctors of Audiology in Florence

Call Today to Schedule Your Appointment  
**541.991.4475**



Scott C. Anderson, Au.D.  
Steven G. Anderson, Au.D.

**Florence**  
1525 12th St, Ste 2  
**HEARING ASSOCIATES**  
of Florence

[HearingAssociatesOfFlorence.com](http://HearingAssociatesOfFlorence.com) AudigyCertified™

## WEATHER DATA

| DATE     | HIGH | LOW | RAIN |
|----------|------|-----|------|
| Sept. 13 | 79   | 46  | 0.00 |
| Sept. 14 | 60   | 50  | 0.00 |
| Sept. 15 | 65   | 46  | 0.00 |
| Sept. 16 | 63   | 40  | 0.00 |
| Sept. 17 | 62   | 53  | 0.19 |
| Sept. 18 | 64   | 44  | 0.58 |
| Sept. 19 | 64   | 51  | 0.00 |

**Rainfall** Week: 0.77"  
Month: 1.38" Year: 42.24"

Courtesy of Roger Cunningham

FATCAT PRODUCTIONS  
IN COOPERATION WITH  
THE OREGON COAST HUMANE SOCIETY  
PRESENTS

**SYLVIA**  
A play by A.R.Gurney

A romantic comedy about a marriage and a dog

"I can only call it one of the most involving, beautiful, funny, touching and profound plays I have ever seen..." — NY Daily News.

**CLASS ACT THEATRE**  
509 KINGWOOD ST, FLORENCE, OR 97439  
[www.catproductions.org](http://www.catproductions.org)

Presented by permission of Dramatist's Play Service

Sept. 23-25 & Sept. 30-Oct. 2  
Fri & Sat: 7pm  
Sun: 2:00  
Tickets: [catproductions.org](http://catproductions.org), 866-967-8167.  
Box Office 1 hr before  
\$18.00 General  
\$16.00 Seniors & Military

[www.TheSiuslawNews.com](http://www.TheSiuslawNews.com)

# Oktoberfest Florence

Saturday, October 1 • 11am - 8pm  
Florence Events Center



- German Food
- Traditional Music & Dancing
- Beer & Wine
- Happy Hour & Games

**PLUS!** The Famous Florence Wiener Dog Races!



**Admission Just \$7**

...and Special Guest  
**The T Club Band**  
5:30 pm - 8 pm

This group has been shaking dance floors from Ashland to Portland since the turn of the century

Corporate Underwriters



Distinguished Sponsors

101 Things To Do Magazine • Banner Bank • Beachcomber Pub & Grill • Bi-Mart  
Burns's Riverside Chapel • Coast Radio • Driftwood Shores • Fred Meyer • Lofy Construction  
Oregon Pacific Bank • PeaceHealth Peace Harbor Medical Center • Sea Lion Caves  
Shippin' Shack • Siuslaw News • Siuslaw Signs & Graphics • Spruce Point Assisted Living

[www.FlorenceChamber.com](http://www.FlorenceChamber.com) • 541-997-3128  
call for additional info. and event details

# Going Out Of Business SALE



**LANE INTERIORS**  
is slashing prices

**50% OFF**

to clear out inventory of

**ALL**  
**NEW • ANTIQUE • UNIQUE**  
Decorative Accessories and furnishings

Sept. 23-24 & Sept. 30-Oct. 1  
10 am - 6:00 pm

Stop by for Sandra's Complimentary  
Delicious Chocolate Chip Cookies

1361 1st Street  
(corner of 1st and Maple)

541-997-6436 • [laneinteriors.com](http://laneinteriors.com)

BLACK  
YELLOW  
MAGENTA  
CYAN