

COMMERCIAL / INCOME / MULTI-FAMILY PROPERTIES

\$399,000



2465 HWY 101 - KFC BUILDING

Excellent commercial building on the Highway in the middle of bustling business district. Formerly a KFC restaurant for many years. Ample paved parking, covered drive thru. Well maintained building throughout its life. Same owner since new. Ready for your next commercial venture. #11173 MLS#16105246

\$399,000



RE-DEVELOPMENT OPPORTUNITY

In the heart of Florence's business/commercial district. 130' Highway 101 frontage with older commercial building & 2 old, uninhabitable homes on Laurel Street behind. Many possibilities exist here...combination of commercial live/work space, multi-family, commercial/retail. A rare opportunity. #10723 MLS#13463033



\$399,000

DREAM A LITTLE DREAM

Opportunity for investors or entrepreneurs. Commercial building and land in prime location. 120 feet of Highway 101 frontage, ample parking and great visibility. Upgraded building with heat pump. Goal 1031 exchange property. Leased through Coastal Property Management and tenant attends to all interior maintenance. Solid tenant track record - in 2 of a 5 year lease. #10578 MLS#15263634



\$195,000

NEWER COMMERCIAL CONDOMINIUM IN OLD TOWN

Retail - Office - storefront. Excellent location - in the heart of Old town. Ground level, distinctive Pacific Northwest design and appeal. Includes ADA accessible rest-room and storage. Ready for your next business venture. Currently leased through May 2017. Lease can be continued upon mutual agreement or use the space for yourself! #10363 MLS#12161412

DEVELOPMENT PROPERTIES



Subject Property

\$795,000

FULL CITY BLOCK

Across the street from 9th Street entrance to Peace Harbor Hospital in Florence, Oregon. One full city block - perhaps one of the area's most significant undeveloped vacant large parcels in the city. #10415 MLS#12636020



\$285,000

DEVELOPMENT OPPORTUNITY

Development property in the heart of Florence. 3 1/2 acres next to Sandpines Golf Course. 37th & Oak access point. Heavily wooded and filled with native vegetation for privacy. Ready for your next development project. Additional acreage available. #10994 MLS#15426589



\$148,750

COMMERCIAL DIVERSITY

Calling all lawyers, stylists, accountants, artists, massage therapists, consultants, craftspeople, booksellers, dentists & dreamers! This appealing & affordable commercial space in the heart of Old Town is just that - adaptable for use. Start planning today. #10987 MLS#15528021

KLA-HA-NEE LOTS...FLORENCE'S ONLY OCEANFRONT GATED COMMUNITY

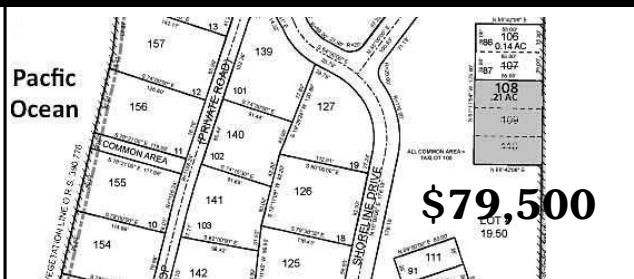
2 ADJACENT READY-TO-BUILD LOTS -STEPS TO BEACH-



\$77,500

KLA-HA-NEE LOT

Wonderful, private lot off of Shoreline Drive in Florence's only gated oceanfront community. One of 2 adjacent lots, approved and ready to build on. Just steps to the beach. Lot will be accessed via 1 shared driveway across common area (to be app'd by HOA) and installed by buyer when developing the lot(s). Trails cut in w/ all corners surveyed. Easy walking access thru dense native forest and vegetation. #11258 MLS#16659472



\$79,500

KLA-HA-NEE LOT

Wonderful, private lot off of Shoreline Drive in Florence's only gated oceanfront community. One of 2 adjacent lots, approved and ready to build on. Just steps to the beach. Lot will be accessed via 1 shared driveway across common area (to be app'd by HOA) and installed by buyer when developing the lot(s). Trails cut in w/ all corners surveyed. Easy walking access thru dense native forest and vegetation. #11259 MLS#16534934

FUTURE BUILDING SITE

\$38,000



OCEAN VIEWS

Gorgeous ocean views from 3 lots on Shoreline Vista in Florence's premier gated oceanfront community. Buy now and plan for your future. when the sewers are extended to Kla Ha Nee, the price will go up. #11172 MLS#16029477