

critics' corner

gameTime

crossword fun

Strong

Thursday at 8 p.m. on **KGW, KOBI**

"The Final Showdown" is exactly what this episode's title indicates, as the two remaining teams face off in the season finale — and if you think the challenges they've endured up to now have been tough, wait until you see what they have to contend with in the last three legs of their pursuit. It'll be worth it for the winners, though, in terms of both bank account and ego.



2016 Miss USA

Sunday at 7 p.m. on **KLSR**

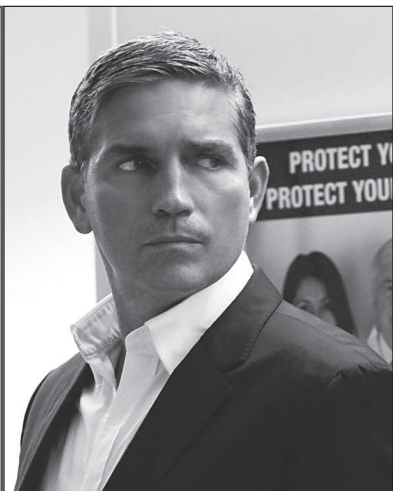
It's the crowning moment, literally: The exiting titleholder, Olivia Jordan of Oklahoma, places the glittery headwear atop her successor at the conclusion of this 65th annual competition. The event is staged at the T-Mobile Arena at Las Vegas' MGM Grand — and for the first time, there's a 52nd entrant alongside representatives from each state and the District of Columbia, determined through social-media voting.



Person of Interest

Tuesday at 10 p.m. on **KVAL**

This series has a President of the United States — and it's not the sitting one, nor anyone currently running for that office — in the new episode "Synecdoche." Played by guest star Joel Haberli, the chief executive is a person of interest investigated by Reese (Jim Caviezel), who has Secret Service agents to contend with. Finch (Michael Emerson) has other concerns that involve mounting an offense against Samaritan. Actor Tim Matheson directed the tale.



The identity of the featured celebrity is found within the answers in the puzzle. In order to take the TV Challenge, unscramble the letters noted with asterisks within the puzzle.

Across

1. Actor on "Blood & Oil" (2)
9. ___ Paulo
10. Bee's great-nephew
11. Old Olds
13. Last season for "JAG"
15. Actress Veronica
17. Lead role on "How to Get Away with Murder"
18. Setting for "The Waltons": abbr.
20. "Star Trek ___: The Voyage Home"; 1986 sequel
21. Know-it-all's problem
23. First name for a tyrant
24. ___ Berry
25. "A View ___ Kill"; 1985 James Bond film
26. Initials for a Beatle
29. Record album, for short

30. Crime drama series for Priyanka Chopra
34. "The ___ in Our Stars"; 2014 Shailene Woodley movie
36. "Studio 60 on the Sunset ___"
38. Skater Babilonia
39. Family restaurant chain
42. Actress Arden
43. "You, Me and the ___"

Down

1. Daniel ___ Kim
2. Mrs. Charlie Chaplin
3. ___ Reese; role on "Person of Interest"
4. Preminger's initials
5. "The ___-Lo Country"; 1998 Woody Harrelson film
6. Favorite drink of Radar on "M*A*S*H"

7. "Coffee, Tea ___ ___?"; 1973 TV movie
8. Letters before a maiden name
9. "60 Minutes" host (2)
12. Role on "Scandal" (2)
14. Explosive letters
16. "___ This Old House"
19. "Rock of ___"; 2012 film for Tom Cruise
20. "American ___"
22. "The Last Man ___ Earth"
23. Word in the title of Jerry Mathers' series
27. Star of "The King and I"
28. "___ of Valor"; 2012 Alex Veadov movie
30. Witty remark
31. Suffix for symptom or problem
32. 1965-68 Robert Culp series (2)
33. Unrefined minerals
35. Battery size
37. "___ Got a Secret"
40. Laughing syllable
41. "___' Man River"

Solution
Sean Murray



Campbell Productions

(541) 991-2920

Video Production & Duplication
Since 1975

Alan Campbell
Owner

Campbell@winfinity.com

HD Video

www.thesiuslawnews.com

E-EDITION • SPORTS • TOP STORIES • OBITUARIES • WEATHER • FORUMS • BLOGS