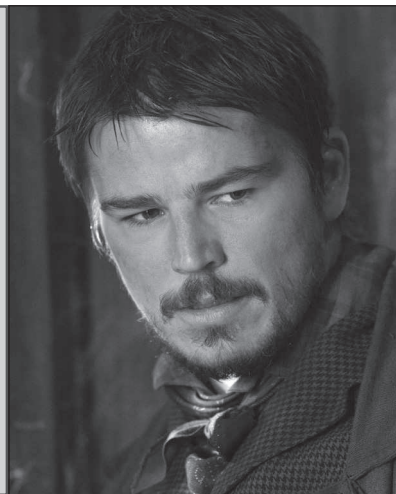


crossword fun

Penny Dreadful

Saturday at 10 p.m. on **SHO**

With Ethan, Sir Malcolm and Dr. Frankenstein (Josh Hartnett, Timothy Dalton and Harry Treadaway) now scattered around the world facing their own personal demons, a despondent Vanessa (Eva Green) turns to Dr. Lyle (Simon Russell Beale) for help in rejoining the world outside. He in turn directs her to Dr. Seward (former guest star, now series regular Patti LuPone), an American therapist who uses an unconventional approach to treat her new patient. Wes Studi also joins the regular cast in this Season 3 premiere, "The Day Tennyson Died."



Houdini & Doyle

Monday at 9 p.m. on **KLSR**

The Houdini is the iconic magician and the Doyle, the legendary novelist who created Sherlock Holmes in the premiere of an adventure-drama series that steers their talents to assist New Scotland Yard in solving crimes. Played by Michael Weston and Stephen Mangan, Harry Houdini and Arthur Conan Doyle aren't the most comfortable partners, but they supply support to Constable Adelaide Stratton (Rebecca Liddiard) starting in "The Maggie's Redress."



Person of Interest

Tuesday at 10 p.m. on **KVAL**

Toward the end of a television season when fans have wondered where this drama series has been, it returns at last — but not for long, since its fifth and final round only lasts into mid-June. "B.S.O.D." picks up where the show left off, with Reese and Finch (Jim Caviezel, Michael Emerson) trying to preserve what they can of The Machine before it's too late. Emerson's wife, "The Good Wife" Emmy winner Carrie Preston, reprises her earlier guest role.



The identity of the featured celebrity is found within the answers in the puzzle. In order to take the TV Challenge, unscramble the letters noted with asterisks within the puzzle.

Across

1. Actress ___ Harden of "Code Black"
8. Ward, for one
9. "The Blind ___"; 2009 Sandra Bullock film
10. Role on "NCIS: New Orleans" (2)
14. "Whose ___ Is It Anyway?"
15. Derek and Diddley
16. "The ___ Adventures of Old Christine"
17. "___ of Echoes"; 1999 Kevin Bacon movie
18. Number of seasons for "The Honeymooners"
19. Sandra and Ruby
20. Beverage containers

24. 466 years ago
27. "You ___ Live Twice"; James Bond film
28. Defunct airline
29. "A Nightmare on ___ Street"; Johnny Depp movie
32. Ending for gang or prank
33. Neighbor of the Simpsons (2)
36. Like the first schools we attend: abbr.
37. "Mr. Holland's ___"; 1995 Richard Dreyfuss film
38. "The Place ___ Pines"; 2012 movie for Ryan Gosling

Down

1. Villain

2. Modifies
3. "The ___ Patrol" (1966-68)
4. Deadly vipers
5. ___ Grissom; "CSI" role
6. "A Bell for ___"; 1945 Gene Tierney movie
7. Nation whose capital is Sana'a
8. Ill-will
11. Initials for actor Bean
12. "___ Ordinary Family"
13. Female farm animal
14. Psychedelic drug letters
20. Actor ___ Campanella
21. False
22. Actress Sharon
23. Neighbor of Israel: abbr.
24. Big Rock Candy, for one: abbr.
25. Nerd
26. Soup-server's need
29. Red Muppet
30. "___ Femme Nikita"
31. "The Mary Tyler Moore Show" setting: abbr.
34. "30 Rock" actress
35. Period

Solution
Jason Beghe





Campbell Productions

(541) 991-2920

Video Production & Duplication
Since 1975

Alan Campbell
Owner

Campbell@winfinity.com

HD Video

www.thesiuslawnews.com

E-EDITION • SPORTS • TOP STORIES • OBITUARIES • WEATHER • FORUMS • BLOGS