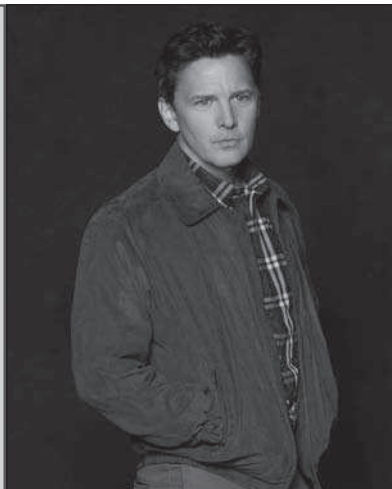


crossword fun

The Family

Thursday at 9 p.m. on **KATU, KEZI**

Since series creator Jenna Bans is a longtime associate of Shonda Rhimes, it's logical that her new series launches on the night the producer "owns." Normally to be seen on Sundays, the drama casts Joan Allen as the mayor of a Maine town where her kidnapped son (Liam James) returns, just as she declares her gubernatorial bid. Rupert Graves and Alison Pill ("The Newsroom") play other family members in the "Pilot," with Andrew McCarthy in an image-busting role.



Damien

Monday at 10:01 p.m. on **A&E**

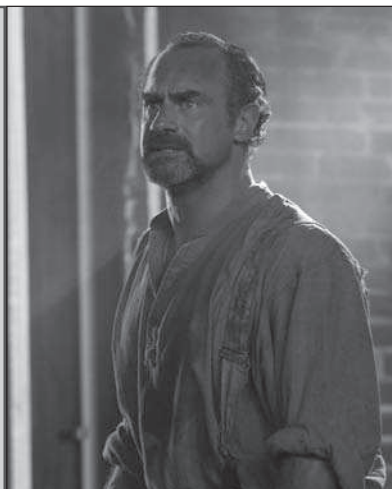
What ever became of that devilish youngster from the movie "The Omen" and its sequels? This new series from "The Walking Dead" producing alum Glen Mazzara provides answers, with Bradley James ("Homeland") cast as the adult Damien Thorn, a war photographer whose return from Syria to New York eventually causes him to confront his heritage. The premiere episode — "The Beast Rises" — also stars Barbara Hershey, Omid Abtahi and Scott Wilson.



Underground

Wednesday at 7 p.m., 8 p.m., 9 p.m., 10 p.m. on **WGN-A**

Long recounted through history lessons, the saga of the Underground Railroad and those who operated and benefited from it is dramatized in a new series, which counts singer John Legend among its executive producers. Not surprisingly, he has a pivotal role in the show's music. The ensemble cast includes Mykelti Williamson, "Law & Order: Special Victims Unit" alum Christopher Meloni, Reed Diamond, Aldis Hodge ("Leverage"), Jurnee Smollett-Bell and Marc Blucas.



The identity of the featured celebrity is found within the answers in the puzzle. In order to take the TV Challenge, unscramble the letters noted with asterisks within the puzzle.

Across

- 1. Series for Marcia Gay Harden (2)
- 8. African nation
- 9. Ceramic stewpot
- 10. Actor on "Chicago Med" (2)
- 14. Tel ___
- 15. Billy ___ Williams
- 16. "___ 2"; 2014 animated film sequel
- 17. Asian meal staple
- 18. "The Skeleton ___"; 2005 Kate Hudson movie
- 19. "It's ___ the Dog"
- 20. "Deuce Bigalow: ___ Gigolo"; 1999 Rob Schneider film
- 24. Setting for "Evita": abbr.
- 27. "Mayberry" resident

Down

- 28. Word of mild surprise
- 29. Marlo Thomas' alma mater, for short
- 32. Fraternity letters
- 33. Actor on "Marvels' Agents of S.H.I.E.L.D." (2)
- 36. Part of the title of Jon Cryer's recent series (2)
- 37. Dog food brand
- 38. Series for Connie Britton

- 6. Actor Gregg
- 7. Couric or Holmes
- 8. "Scary ___"; 2000 Anna Faris film
- 11. Former series for Josh Randall
- 12. Prefix for vision or coil
- 13. "___ Story"; 1995 blockbuster animated movie
- 14. "Million Dollar ___"; 2014 Jon Hamm film
- 20. "The ___ Instruments: City of Bones"; 2013 Lily Collins movie
- 21. "Jeff, Who Lives ___"; 2011 Jason Segel film
- 22. Simba and his kin
- 23. Curvy letter
- 24. Monogram for the telephone inventor
- 25. Showed on TV again
- 26. ___ Davis
- 29. "The Man From ___"; John Wayne movie
- 30. Tom Brokaw's state of birth: abbr.
- 31. Setting for "The Big Bang Theory": abbr.
- 34. Six-pointers, for short
- 35. "___ Abner"

Solution
Mariah Carey





Campbell Productions
(541) 991-2920

Video Production & Duplication
Since 1975

Alan Campbell
Owner

Campbell@winfinity.com

HD Video

www.thesiuslawnews.com

E-EDITION • SPORTS • TOP STORIES • OBITUARIES • WEATHER • FORUMS • BLOGS