

Siuslaw News Sports & Recreation

On the Bite

A WEEKLY FISHING REPORT FOR THE LOCAL REGION

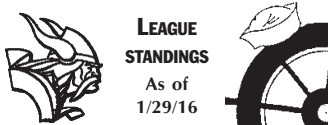
www.dfw.state.or.us/RR

MID COAST LAKES

The coho salmon fisheries in Siltcoos and Tahkenitch lakes are slow to fair. This time of year is typically the most productive. Recent rains and big tide should help to move new fish into the lakes.

The West Lake Boat Ramp at Siltcoos has been close for repairs but there is a neighboring private ramp that can be utilized. Look to fish near the lake outlet and by the major

See **FISHING 4B**



LEAGUE STANDINGS
As of 1/29/16

BASKETBALL

| FWL GIRLS | | MWL GIRLS | |
|------------|-----|-----------|-----|
| BROOKINGS | 4-0 | LOWELL | 8-1 |
| MARSHFIELD | 3-1 | SILETZ | 8-1 |
| DOUGLAS | 3-1 | T. LAKE | 7-2 |
| N. BEND | 1-3 | MCKENZIE | 6-3 |
| SIUSLAW | 1-3 | ALSEA | 3-6 |
| S. UMPQUA | 0-4 | MAPLETON | 2-7 |

| FWL BOYS | | FWL BOYS | |
|------------|-----|-----------|-----|
| MARSHFIELD | 4-0 | SILETZ | 7-0 |
| S. UMPQUA | 3-1 | LOWELL | 7-1 |
| BROOKINGS | 2-2 | T. LAKE | 5-2 |
| N. BEND | 2-2 | MOHAWK | 3-5 |
| SIUSLAW | 1-3 | EDDYVILLE | 3-6 |
| DOUGLAS | 0-4 | MAPLETON | 2-6 |

TIDE TABLE

Entrance Siuslaw River

| High Tide | Low Tide |
|----------------|---------------|
| Jan. 30 | |
| 4:04am / 6.9 | 10:31am / 2.4 |
| 4:10pm / 5.5 | 10:12pm / 2.1 |

| | |
|----------------|---------------|
| Jan. 31 | |
| 4:46am / 6.8 | 11:31am / 2.3 |
| 5:16pm / 5.1 | 10:57pm / 2.7 |

| | |
|---------------|---------------|
| Feb. 1 | |
| 5:33am / 6.8 | 12:36am / 2.1 |
| 6:34pm / 4.9 | 11:54pm / 3.2 |

| | |
|---------------|--------------|
| Feb. 2 | |
| 6:25am / 6.9 | 1:41am / 1.7 |
| 7:55pm / 5.0 | |

| | |
|---------------|---------------|
| Feb. 3 | |
| 8:14am / 7.3 | 1:010am / 3.5 |
| 9:58pm / 5.7 | 3:29pm / 0.6 |

| | |
|---------------|--------------|
| Feb. 4 | |
| 9:06am / 7.7 | 3:07am / 3.4 |
| 10:42pm / 6.1 | 4:14pm / 0.1 |

| | |
|---------------|---------------|
| Feb. 5 | |
| 2:51am / 7.0 | 8:550am / 2.3 |
| 2:31pm / 6.6 | 8:58pm / 1.0 |

SIUSLAW NEWS
148 Maple St.
Florence
541-997-3441

VIKS NAB DOUGLAS IN NAILBITER

BY NED HICKSON
Siuslaw News

SIUSLAW: 47 DOUGLAS: 45

It was a longtime coming, with the Viks getting close with near wins against Marshfield and Brookings in the last two weeks, but the Vikings put it all together Tuesday night on the road at Douglas.

Though Siuslaw hasn't fared well against a man-to-man in the past, the team's confidence gained in recent games translated into smarter passing and patience in its motion offense.

The Trojans led the entire first period, due mostly to their ability to drain the long 3-pointer, with 12 of their 20 points coming from beyond the arc.

Trailing 20-10 with 40 seconds remaining in the period, the Vikings got a boost from senior Preston Mitchell, who sank his own trey to keep Siuslaw within seven points heading into the second quarter.

Sophomore forward Jakob Hickson sank a quick bucket to begin the period, kicking off a 6-0 run that brought the Viks to within one point, 20-19, after an offensive rebound by sophomore post Trent Reavis.

With 3:00 remaining before the half, Douglas sank its first basket of the quar-

ter, with Viking sophomore forward Jared Brandt closing the gap to within two points, 22-20.

The Trojans were able to edge ahead on a basket and a pair of free throws to end the half and keep a narrow 26-20 lead.

Coming back from the break, Mitchell scored on a short jumper, only to have Douglas sink a 3-pointer to stay ahead 29-22. Reavis, who went on to score 12 points in the game, nabbed his second offensive rebound, bringing Siuslaw within five, 29-24.

Mitchell, who eventually closed the night with 23 points, drained a 3-pointer, then managed a steal and fastbreak layup to tie the game at 29.

As the Viks controlled the boards, limiting the Trojans to single shot attempts with rebounding from seniors Reese Siegel and Scott Gordon, as well as Brandt and Hickson, Siuslaw nabbed its first lead of the game on an offensive board from Reavis that made it 31-29.

Douglas answered at the other end to tie things up. Mitchell struck again with 30 seconds remaining, giving Siuslaw a 33-31 lead to start the final quarter.

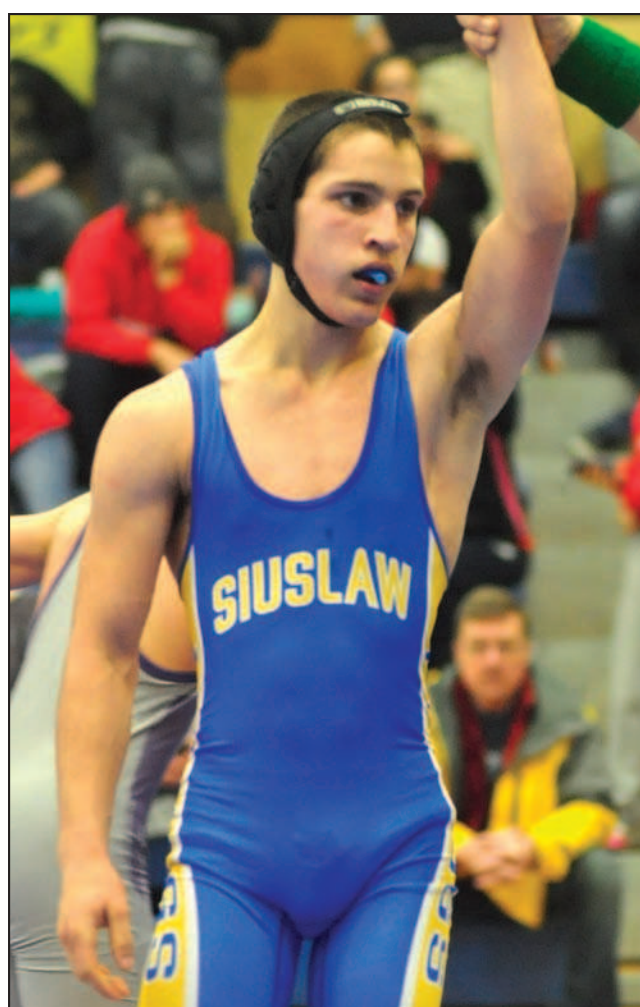
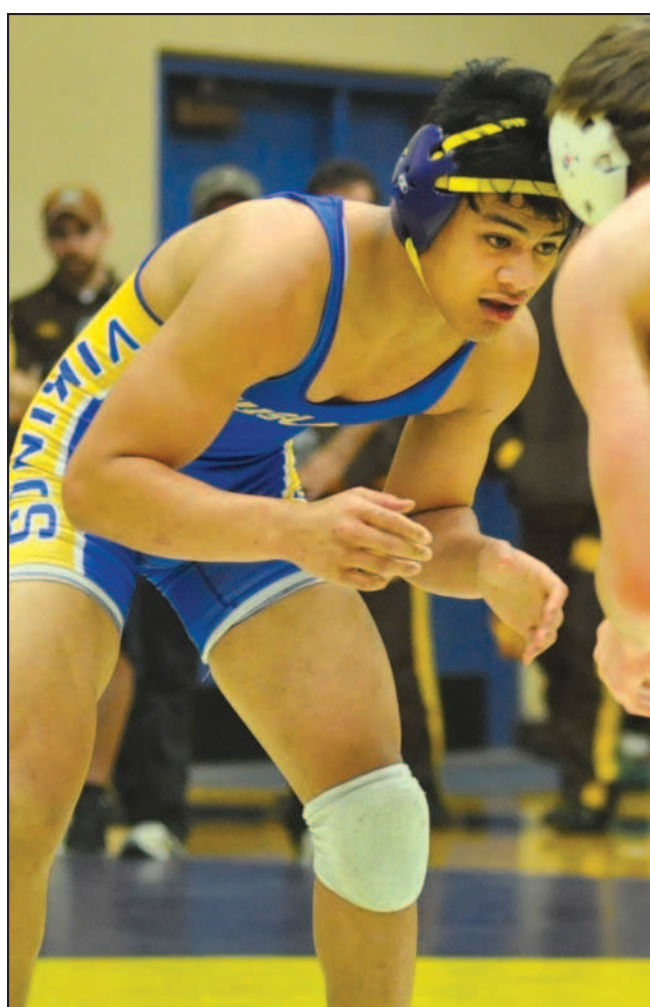
The Trojans went back to the outside, sinking a 3-pointer to move ahead by one point.



Siuslaw junior Brogan Cornish and senior Kenneth Thrall return to the court all smiles after a timeout.

See **VIKS 4B**

SIUSLAW SHOWS WELL AT SUTHERLIN



Siuslaw senior Talamoa Tupua (left) and sophomore Ricky Huff each took home tournament titles from Sutherlin.

BY NED HICKSON
Siuslaw News

Siuslaw senior 152-pounder Talamoa Tupua and sophomore 113-pounder Ricky Huff came away with tournament titles in their respective brackets during last weekend's Sutherlin Wrestling Classic to lead the Vikings to a second-place finish at the 12-team invitational.

In the title round for the 113-pound crown, it took Huff just 1 minute, 29

seconds to pin Trayson Weidman of cascade Christian. Huff, who was 2-0 on the day, won his previous match by major decision, 15-5, over Colton Ringen of league rival North Bend.

For Tupua, the 152-pound title came in a 11-6 decision over Coquille's Wyatt McCarthy.

Siuslaw also got scoring from 106-pound freshman Matthew Morales, who finished second in his division. Morales won by fall over Philomath's Hunter McCaskill but lost to North

Bend's Colton West by fall in 3:11.

Wrestling at 138 pounds, junior Scott Simmons also placed second after losing 11-7 to Coquille's Brady Jarrett.

The Viks got a third-place finish from senior Dylan Jennings at 220 pounds, along with fourth-place finishes from freshman Murray Bingham (126 pounds) and senior Kainan Lane (285 pounds).

See **SIUSLAW 4B**

OSU study focuses on commercial crabbing injuries

CORVALLIS — Commercial Dungeness crab fishing on the West Coast is one of the highest risk occupations in the United States, based on fatality rates. But nonfatal injuries in the fishery appear to go largely unreported, a new study from Oregon State University shows.

"While the fatality rates in the Dungeness crab fleet have been reported in the past, the incidence of nonfatal injuries have not been previously studied," said Laurel Kincl, an assistant

professor of environmental and occupational health and safety in the OSU College of Public Health and Human Sciences.

"The commercial Dungeness fishing fleet, which operates along the coast of Oregon, Washington and Northern California, is a vital economic commodity," she said. "Injuries can be life-threatening and life-altering, leading to disability, decreased quality of life and lost wages."

Understanding the type and nature of

fatalities and injuries, including describing and categorizing the types of injuries, is the first step in identifying safety issues and pinpointing areas for prevention, she said.

Kincl and a team of researchers examined 12 years of death and injury data, and found that 28 people died while commercially fishing for Dungeness crab from 2002-2014. In that same period, 45 injuries were

See **STUDY 3B**

Lady Viks unable to get drop on Douglas

BY NED HICKSON
Siuslaw News

SIUSLAW: 34 DOUGLAS: 78

Though the Vikings had three players score seven points and managed 11 steals, it wasn't enough to overtake Douglas Tuesday night.

Junior guard Destinie Tatum, senior post Taylor Dotson and freshman wing Annabel Tupua each had seven points, the Vikings only shot 25 percent against the Trojans, making just 11 of 44 attempts from the field.

Douglas, meanwhile, shot 62 percent to take an early lead and keep it through all four quarters.

From the charity line, the Viks had 28 attempts but sank only 13 buckets.

See **LADY VIKS 4B**

SPORTS

Calendar

Jan. 30
• SHS WRESTLING
AT DOUGLAS HS
8 A.M.

Feb. 2
• SHS GIRLS BB
HOST SWEET HOME
5:45 P.M.

• SHS BOYS BB
HOST SWEET HOME
7:15 P.M.

• MHS GIRLS BB
AT EDDYVILLE
5:30 P.M.

• MHS BOYS BB
AT EDDYVILLE
7 P.M.