

Salvation Army approaching goal in Florence area

The first Red Kettle Campaign of The Salvation Army in western Lane County has reached its half-way point as of last Saturday.

"We have a very ambitious goal to raise \$10,000 before the end of our campaign on Christmas Eve," says Volunteer Kettle Coordinator Janet Snow. "We are so appreciative of the tremendous community support we are receiving."

Snow and more than 50 volunteers have been "standing kettle" since Thanksgiving Day in six locations around the Florence area. Fred Meyer, BiMart, Grocery Outlet, Safeway and the Old Town Barber Shop on Bay Street have hosted the red kettles this year.

"We still need volunteers to finish our campaign," says Snow. "Every hour we have a volunteer at a red kettle we more than triple the dollars that people passing by give. People just love to hear someone say 'Merry Christmas' and 'God bless



COURTESY PHOTO

Volunteer Kettle Coordinator Janet Snow holds the first \$100 bill donated to a Red Kettle this year.

you,' as most of our volunteers do."

Florence Mayor Joe Henry and his wife Pam have donated

their time to being bell ringers this year, too.

"The Salvation Army is a respected organization and

the fact that all the monies raised in the Red Kettle Campaign will be used for services right here in western Lane County is a tremendous blessing to our community," Henry says. "People love to give to good causes that serve our immediate area."

Michael "Pops" Goodman of Pops Gingerbread Smokehouse in Mapleton, in addition to donating a dollar from every Carolina BBQ sandwich sold this Christmas season, is offering to give gift certificates for two such sandwiches to anyone who gives \$100 or more to The Salvation Army in western Lane County before the end of this year.

Donors will receive their

gift certificates with a thank you letter from The Salvation Army to be mailed out shortly after the new year begins.

In addition to the kettles, local donations can be mailed to a local post office box.

"Checks sent in are approaching \$2,000 now and all of the monies we raise this year will help create a new Agency Fund within the Western Lane County Community Foundation," says Snow.

Once an agency fund is established within the Foundation, it will provide a fixed percentage of the fund to The Salvation Army for services within the western Lane County area each year.

Bill Olson, director of gift

planning for The Salvation Army in Oregon and Idaho, lives in the Florence area.

He says, "We are very happy to announce that Michael Falter of City Lights Cinemas has donated the use of the Chapman theater on Sunday, Dec. 27, so we can thank our volunteers. That celebration may very well be a victory party if we can reach the \$10,000 goal set by Janet Snow and her team before Christmas Day."

Interested persons can donate by sending gifts to The Salvation Army — Western Lane County, P.O. Box 1041 Florence, OR 97439.

To volunteer for kettle duty, call Janet Snow, 559-289-3063.

Rotary's SMS 'Student of the Quarter'



COURTESY PHOTO

Rotary announced the Siuslaw Middle School (SMS) Student of the Quarter is Max Klump. Pictured are (from left): SMS teacher Pat Wondra, Siuslaw School District Superintendent Ethel Angal, student Max Klump and Rotary president Crystal Farnsworth.

Oregon Youth Authority to help families in need today

About five youth and a staff person from Camp Florence Youth Transitional Facility will be among those distributing holiday food boxes to needy families today, Dec. 19, as part of the Soroptimist of Florence's Christmas Basket program.

The youth from Oregon Youth Authority's Camp Florence will help set up the distribution site at Siuslaw Middle School and pass out

baskets on Saturday, as well as deliver baskets to people who are unable to leave their homes.

Event organizers anticipate that 425 households in Florence will receive food baskets, with turkeys included.

The youth will participate in the community program to help spread holiday cheer to those in need while also learning the importance of giving to others.

Premier Landscaping holiday light show continues nightly

More than 50,000 led lights, an hour of holiday music and more than 100 channels of synchronized special effects are all part of the annual free holiday light show at Premier Landscaping.

All broadcasts are on 97.9 FM every night from 5 to 10 p.m., allowing visitors to enjoy lights synced to music from their cars.

Come watch the dancing

favorites, four singing characters: Santa, Rudolf, a tree and a snowman.

The show includes eight RGB flood lights, a 50-foot-tall mega tree and more.

Premier Landscaping is at 812 Quince St. in Florence, one block before Highway 101.

Park in either the True-Value parking lot or behind Kari's Dunes Cafe for the best possible viewing.

GROCERY OUTLET bargain market

2066 Highway 101, Florence
541-997-0343



Woody Woodbury
Independent Owner/Operator
Florence Grocery Outlet

Produce • Dairy & Deli
Health & Beauty
Frozen Foods • Fresh Meat
Housewares • Beer & Wine
Organic & Natural Foods
and much more!

We have ample RV parking!



THE OREGON COAST'S PREMIER WINTER MUSIC EVENT!

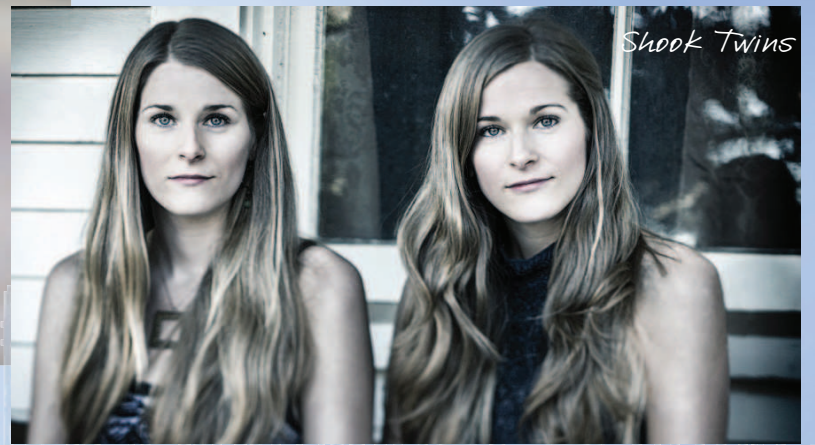
12 BANDS • 2 Days of Music & Fun!
JANUARY 16 & 17 • FLORENCE EVENTS CENTER



Jonathan Edwards

SATURDAY NIGHT HEADLINERS

Don't miss legendary singer/songwriter Jonathan Edwards and the rapidly rising indie-folk/pop Shook Twins!



Shook Twins

Friday BONUS!



Additional events at City Lights Cinema, the Florence Regional Arts Alliance gallery, and Silver Lining Boutique.

Saturday 11am-4pm



Billy Jones
Bob Haworth
Danny Barnes
Pretty Gritty
John Craigie



7pm
Jonathan Edwards & Shook Twins

Sunday 11am-4:30pm



Molly Hardin
Ian McFeron
Cabin Fever NW



True North
Crow and the Canyon

PLUS



...Artisan Fair and Pie Sale...
SATURDAY & SUNDAY 10 AM - 4 PM
30+ OUTSTANDING ARTISANS
Clay, Fabric, Fiber, Jewelry, Photography
FOOD & BEVERAGE TASTINGS



.....Kids' Concert.....
THE TRAIL BAND WILL TEACH AND ENTERTAIN LOCAL AREA SCHOOL KIDS ON THURSDAY, JANUARY 14TH.
By invitation only.

TICKETS • SCHEDULES • ARTIST PROFILES

www.WinterMusicFestival.org

541-997-1994 • www.eventcenter.org • Box Office: 715 Quince Street, Florence

