

DEVELOPMENT PROPERTIES...READY FOR YOUR NEXT NEW VENTURE



\$795,000

FULL CITY BLOCK

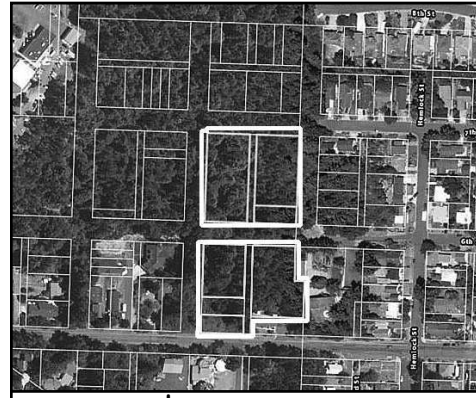
Across the street from 9th Street entrance to Peace Harbor Hospital in Florence, Oregon. One full city block – perhaps one of the area's most significant undeveloped vacant large parcels in the city. #10415 MLS#12636020



\$285,000

DEVELOPMENT OPPORTUNITY

Development property in the heart of Florence. 3 1/2 acres next to Sandpines Golf Course. 37th & Oak access point. Heavily wooded and filled with native vegetation for privacy. Ready for your next development project. #10994 MLS#15426589



\$275,000

832 - 6TH ST

Four tax lots near the hospital and historic Old Town totaling 2.76 acres just waiting to be developed. Use your imagination, check to see how many homes you can put here. All city services are available. #11064 MLS#15526798



\$189,000

32ND STREET

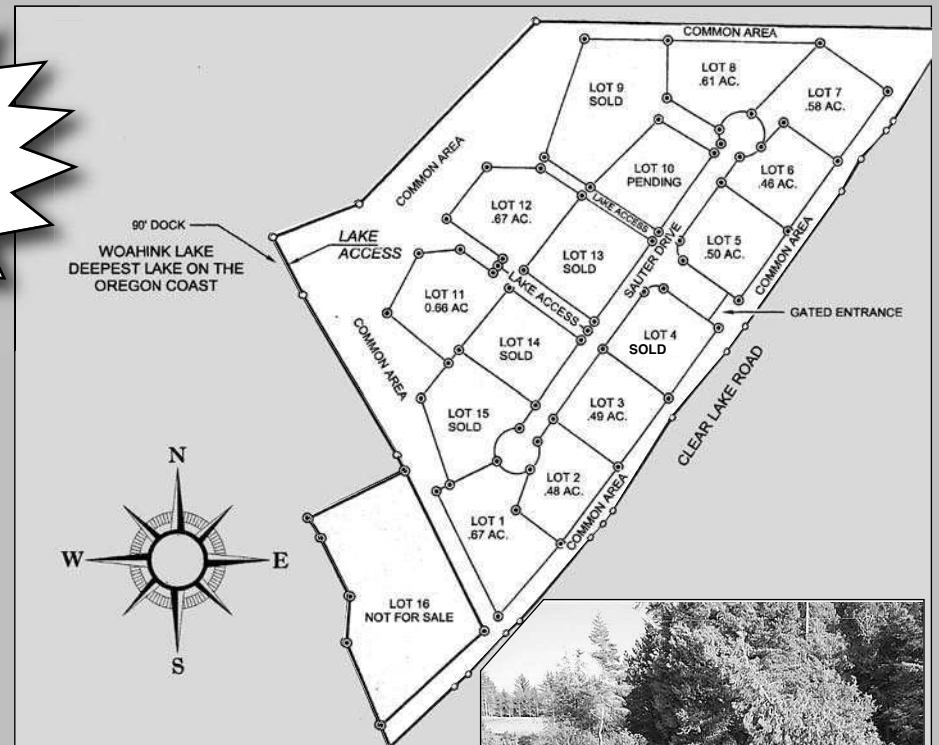
Good opportunity to purchase property in town. Possible owner financing with 1/3 down. Multi-family zoning provides for a wide variety of potential uses. #10998 MLS#15197252

GATED, PRIVATE, SUNSET COVE SUBDIVISION ON WOAHINK LAKE

Waterfront community on coastal Woahink Lake. Lots offer views of lake, sunsets, sand dunes and wildlife. 90 foot long community dock offers boat moorage and lake access. Located just minutes south of Florence. Close enough to the beaches to hear the surf. All underground utilities available. The marine climate insures moderate temperatures year-round. Lots vary in price from \$139,000 to \$229,000. Best value on Woahink Lake for water access lots.



Great Sun Exposure and West Facing Vistas



Eco-Friendly Advantex Septic Systems



Unique to region and adjacent to dunes recreation area. Woahink Lake offers:

- 800 Acres • 14 Miles of Shoreline • Swimming • Fishing • Boating • Scuba Dive Park
- Float Plane Accessibility • Deepest Lake on the Oregon Coast