

UCC donation fund at Oregon Pacific Bank

In response to the tragedy that took place on the Umpqua Community College campus Oct. 1, Oregon Pacific Bank has pledged support to the victims and their families through a donation of \$2,500 to the UCC Strong Fund.

The UCC Strong Fund is being managed by The Greater Douglas United Way, with all contributions being distributed 100 percent to the families who have been affected by this event. Distributions to the

families will be decided on and monitored by an advisory committee established for this purpose that consists of community leaders.

On behalf of its Roseburg branch and all of its employees, OPB offers its deepest sympathies to the victims' families and the entire community. OPB is proud to be part of the Roseburg community and is committed to standing strong with UCC for the time of healing that lies ahead.

WLCF grant applications now available



COURTESY PHOTO

2015 Western Lane Community Foundation Grant recipients

Western Lane Community Foundation has announced that its annual Discretionary Grant Program is accepting applications for the 2016 grant cycle.

Grants are awarded to local

nonprofit organizations for projects and programs in the areas of education, medicine and science, the arts and social and civic services.

Money given each year

varies. In February 2015, the grant program distributed more than \$90,000 in grants to 37 nonprofit recipients covering most of western Lane County.

Information, guidelines, and

applications can be downloaded at www.wlcfonline.org, or by calling 541-997-1274.

Applications must be received no later than close of business Jan. 15.

FLORENCE HOUSEHOLD HAZARDOUS WASTE ROUND-UP

Some everyday items when disposed of improperly harm the quality of drinking water and cause other environmental damage. Keep your water supply safe and healthful—take a moment to gather your household hazardous waste and put it in its place.

FRIDAY, OCT. 23 • 12-5
SATURDAY, OCT. 24 • 8-2

FLORENCE TRANSFER SITE
2820 N. Rhododendron Drive

BRING:

- Paint
- Household cleaners
- Lawn and garden chemicals
- Car care products
- Arts and crafts products
- Other household hazardous waste

Limit is 35 gallons of waste in total from each household. Check labels for words like flammable, corrosive, poison, caution, and danger. For your safety it is always best to carry these items in a separate compartment (like the trunk of your car) with secured lids to eliminate spills in transport.

DON'T BRING:

- Empty containers
- Drums
- Radioactive waste
- Asbestos
- Explosives or electronics

For information about disposal of radioactive waste, aerosols and explosives, call Lane County Waste Management Division at 541-862-2828. Up to seven (7) Covered Electronic Devices (CEDs) can be recycled for free at any one time at these 6 Lane County Transfer Stations: Glenwood, Cottage Grove, Florence, Oakridge, Veneta, and Vida during normal operating hours. Also, Lane County accepts sharp, oil, antifreeze and batteries of all types year-round at all refuse deposit sites.

Year-Round Collection Sites—Paint, Electronics, and Fluorescent Lamps
Paint, Electronics, and Compact Fluorescent Bulbs (and tubes up to 4 feet) are accepted year-round at various locations in Lane County through on-going collection programs. Check out the websites below to find a location near you or call 541-862-4120 for more information.

PaintCare www.paintcare.org
Oregon E-Cycles www.deq.state.or.us/efcycle • 1-888-5-RECYCLE (532-9253)
CFL Collection Sites—List of Participating Lighting and Hardware Stores www.lanecounty.org/lamps

SPONSORED BY LANE COUNTY & THE CITY OF FLORENCE

Call 541-997-8237 For More Information

NOTE: residential waste only—no commercial waste will be accepted.

FOLLOW US FOR THE LATEST NEWS

f /SIUSLAWNEWS | @SIUSLAWNEWS

House concert to offer intimate musical setting

Composer, Steinway artist and Pianist for Peace Louis Landon will be appearing in concert in Kathy Parsons' home in Florence, tomorrow, Oct. 22, at 7 p.m.

The concert will include original music from some of Landon's 12 CDs, plus some surprises.

Landon has been a professional musician his entire career and has toured with some of the biggest names in show business for more than 30 years.

He released his first solo piano album, "Unwind," in 2005, and recently released "Healing Hearts 2 — Solo Piano" to celebrate his business by the same name, which offers "mentoring, music and sound vibrations that are personalized to assist you in your soul's



COURTESY PHOTO

Composer and pianist Louis Landon will perform in Florence tomorrow, Oct. 22.

journey."

An exceptionally versatile artist with roots in classical, jazz, new age and pop music,

Landon's musical voice is uniquely his own. He has three missions in life: to create a more loving and peaceful

world by writing, recording and performing music from the heart; to inspire people to live joyously and passionately; and to heal and awaken people through music and mentoring.

Landon tours all over the country performing both solo and as part of the Whisperings Solo Piano Radio group.

Interviews with Landon and reviews of all of his piano albums are available at www.MainlyPiano.com or www.LouisLandon.com

There is a suggested donation of \$15 at the door for the concert.

Reservations are required and can be made by calling Parsons at 541-999-9720 or email kathypiano@gmail.com.

The address and directions will be given when reservations are made. CDs and songbooks will be available for sale and for autographing.

Coos Bay to host State of the Coast

COOS BAY — The annual State of the Coast conference, sponsored by Oregon Sea Grant, will be held Saturday, Oct. 24, at Southwestern Oregon Community College's Hales Center.

The event is designed to bring coastal and noncoastal Oregonians — including scientists, business and community leaders, fishermen, resource managers, teachers, students, recreationists and conservationists — together to learn, network, and talk about Oregon's marine environment.

Registration in advance is recommended as space is limited. Registration, which is \$35

for the general public and \$25 for students, includes lunch, a reception and refreshments.

Doors open at 8 a.m. and the conference begins at 9 a.m.

For more information and to register, visit www.stateofthecoast.com.

Oregon Sea Grant is a coastal science, outreach and education program based at Oregon State University. The conference will explore several marine-related issues, including changing ocean conditions such as "The Blob" — a huge patch of unusually warm water in the Pacific Ocean; innovations in fishing, new approaches to ocean conservation,

marine debris, water quality, a potential Cascadia Subduction Zone earthquake and others.

The conference will include talks, displays and hands-on activities.

Keynote speaker Wallace J. Nichols, author of the book, "Blue Mind: the Surprising Science that Shows How Being Near, In, On or Under Water Can Make You Happier, Healthier, More Connected and Better at What You Do," will discuss some of the themes in his book.

His talk will weave in neuroscience, psychology, biology and ecosystem analysis, as well as personal stories.

OREGON Stove Works & Spas

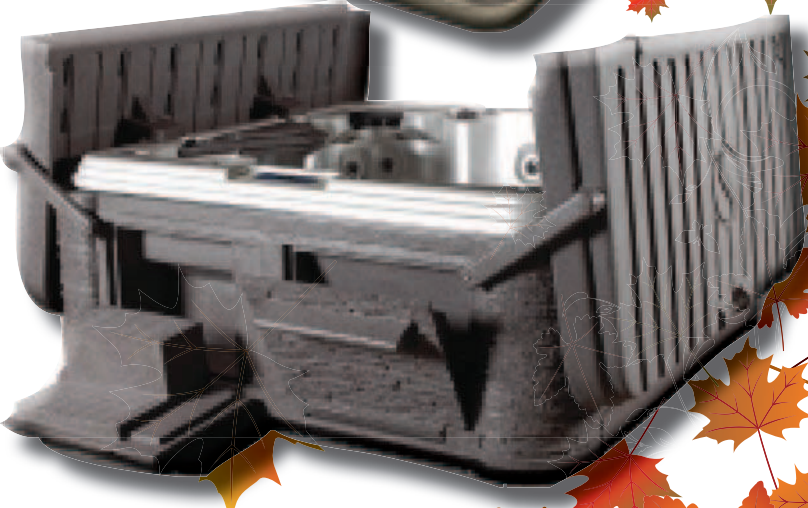
We Add *Comfort and Convenience* To Your Home

Find us in Florence
2107 Highway 101 • 541-590-2077

PARKING LOT SALE

Save \$500 to \$5,000 on ALL SPAS!

FEATURING STRONG SPAS



FRIDAY, SATURDAY & SUNDAY
OCTOBER 23, 24 & 25 • 10AM TO 6PM



CONCEAL CARRY PERMIT CLASS
Oregon-Utah
Valid in 35 States

Thursday, October 29th
1pm or 6pm
Walk-ins Welcome

Florence Event Center, 715 Quince St.
OR/Utah—valid in WA \$80
or Oregon only \$45

FIREARMTrainingNW.com ~ FIREARMTrainingNW@gmail.com

360-921-2071

VOICE YOUR OPINION!

Write a Letter to the Editor today. Email Editor@TheSiuslawNews.com.

BLACK
YELLOW
MAGENTA
CYAN