

Siuslaw News Sports & Recreation

SPORTS Calendar

Aug. 5

• FLORENCE
SOFTBALL
AT MILLER PARK
5:30 AND 7 P.M.

Aug. 10-13

• VIK FOOTBALL
CAMP
AT SHS
GRADES 2-4,
1 TO 2 P.M.
GRADES 5-8,
3 TO 5 P.M.
FROSH/SOPH,
6 TO 8 P.M.

Aug. 15

• X-WEST
SANDBOARD
COMPETITION
AT SAND MASTER
PARK
2 TO 5 P.M.

Aug. 22

• SIUSLAW OPEN
GOLF TOURNEY
AT SANDPINES
9 A.M.

SIUSLAW CELEBRATES ATHLETIC LEGACY



PHOTOS BY NED HICKSON/SIUSLAW NEWS

Clockwise from top: Jim Archer receives a standing ovation as this year's "Viking Spirit" inductee into the Siuslaw Athletics Hall of Fame; members of the 1988 state championship cheerleading team are introduced by then-coach Nancy Grey; Collin Cram (2004) talks about how the support of coaches and family helped make him into the person he is today.

"School records are hard to come by at Siuslaw" — 2015 Hall of Fame inductee John LaDuke

In the history of Oregon 4A high school track and field, no school has scored more points at state meets than Siuslaw. So it was only fitting when 1960 graduate John LaDuke stepped to the podium as the first Viking athlete to be inducted into the Siuslaw Athletics Hall of Fame for the Class of 2015.

"School records are hard to come by at Siuslaw," LaDuke said, noting that the top mark in the long (broad) jump has only been improved by 7.75 inches over the last 55 years. "I think that says a lot about the level of competitive spirit at our school."

LaDuke, who was the first in Siuslaw history to win back-to-back long jump state titles, was one of seven individuals and three teams recognized during last Friday's induction ceremony at the Florence Events Center. It was an evening of smiles and welcomed embraces spanning more than five decades of athletic

achievement still living vibrantly in the eyes of inductees, their family and past classmates.

The evening's emcee, Bob Sneddon, opened the ceremony by naming some of the past athletes inducted over the last four years since the Hall of Fame was established in 2011.

"Several are here tonight, some traveling quite a distance to be here for teammates," said Sneddon. "Siuslaw's school spirit is alive and well."

As a testimony to that spirit, when 148-lb. 2A state champion wrestler Ron Bly (1965) stepped up to the stage, presenter and classmate Fred Allen was unable to hide his emotion.

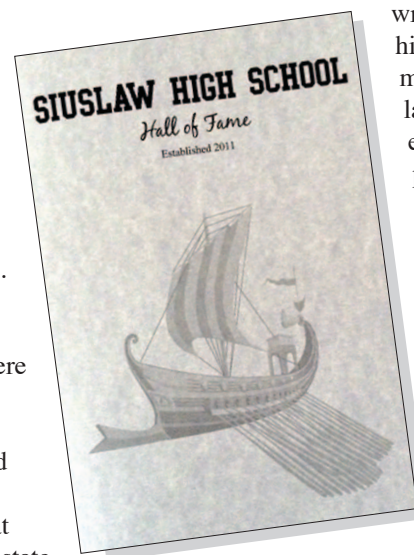
"My wife knew this would happen," joked a misty-eyed Allen. "She told me 'Don't forget to breathe.'"

Past Siuslaw teacher Dan Rankin then read a letter written to Bly by his 1965 classmates, congratulating him and expressing their pride in his achievement.

"One thing that guided us kids in the 1950s and 1960s was sports," said Bly. "It was the glue that held our class and the community

together. It's a common thread that runs through all of us — and still does."

The theme of community was also a common thread running through all



See HOF 3B

On the Bite

A WEEKLY FISHING REPORT FOR THE LOCAL REGION

www.dfw.state.or.us/RR

MID COAST LAKES
Fishing for the various warm water fish species is fair to good during the summer months. There are numerous lakes in the Florence area that can provide good opportunity and have boat and bank access.

SIUSLAW RIVER:
Cutthroat trout

The cutthroat trout fishery is slow to fair. Fishing during the early mornings or in the larger tributaries is the most productive. River conditions are very low and warm for this time of year. Bait is not allowed above the head of tide but small spinners, spoons and fly fishing can be very productive.

ALSEA RIVER:
Cutthroat trout

The cutthroat trout fishery is fair in the mainstem and in some of the large tributaries. With the low and warm river conditions the best opportunities will be in the early morning when water temperatures are the coolest. Small spinners are typically

See FISHING 4B

Local photog chosen in ODFW contest

SALEM — From salmon fishing on a foggy coastal river, to chukar hunting in the John Day River canyon, to watching a sandhill crane take flight, the winning photographs in the Oregon Department of Fish and Wildlife's photo contest confirm that Oregonians love the outdoors.

Eighty photos met the contest's eligibility requirements and from them winners were selected in five categories: fishing, hunting, crabbing, clamming and wildlife viewing.

Each winner will receive a \$50 gift card to Cabela's.

The winning photos and several runner-up photos can be seen on the ODFW website. In the future, these photos and others also may be showcased on ODFW's website, in promotional materials and on social media channels.

In the Wildlife Viewing category, Florence resident and photographer Jane Pittenger, won for a bird's-

See PHOTOG 4B

TIDE TABLE

Entrance Siuslaw River

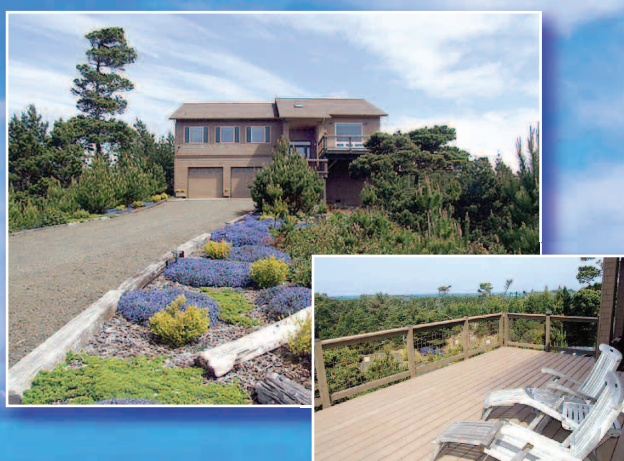
High Tide	Low Tide
Aug. 5 4:17am / 6.3 4:53pm / 7.5	10:27am / 0.3 11:26pm / 0.5
Aug. 6 5:23am / 5.7 5:45pm / 7.4	11:19am / 1.1
Aug. 7 6:38am / 5.2 6:43pm / 7.3	12:34am / 0.5 12:17pm / 1.7
Aug. 8 8:01am / 5.0 7:45am / 7.2	1:46am / 0.3 1:25pm / 2.3
Aug. 9 9:21am / 5.1 8:47pm / 7.2	2:56am / 0.1 2:37pm / 2.6
Aug. 10 10:28am / 5.4 9:45pm / 7.2	3:58am / -0.2 3:44pm / 2.6
Aug. 11 11:21am / 5.7 10:38pm / 7.3	4:51am / -0.5 4:43pm / 2.4

SIUSLAW NEWS

148 Maple St.
Florence
541-997-3441



Lynnette Wikstrom
Broker
Cell: 541.999.0786



lynnette@cbcoast.com

Beautiful Custom Home with Ocean Views!

Rows of windows... show stunning ocean views from kitchen, dining and living rooms. Vaulted pine ceilings, custom hickory cabinets, travertine floors, stonework, 3 zoned heating system, plus many more custom accessories make this home a "MUST SEE!" Private location with RV hook-up and garden, plus out of tsunami zone.

\$599,000

CBC#10819 MLS#14177924

100 Hwy. 101, Florence, OR • 541.997.7777

"We're next to the Bridge."

