

Learn advantages of grass-fed meats

Join Calvin on Saturday, June 20, at 3 p.m., at Real Food Co-op to learn more about the whys and hows of local pasture raised meats.

Calvin will talk about why it is important to eat meats that are pasture-raised on smaller farms with no antibiotics and hormones. He will discuss the nutritional differences of these meats compared to those commonly found in most grocery stores. Learn more about farming practices of big meat producers compared to those of small local farms and how they affect our health and our environment.

Calvin will also show how to prepare grass-fed meats for different meals, including

organ meats such as heart and liver.

It has been found that cooking grass-fed meats for longer periods of time at lower temperatures makes them tender and juicy.

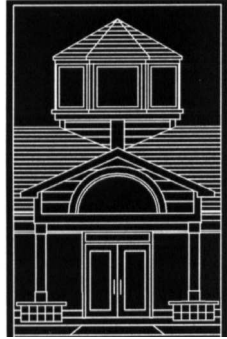
Anyone interested in learning the advantages of pasture-raised meats can come to the Real Food Co-op to find out more.

The co-op is located at 1379 B Rhododendron Drive and is open to the public Monday through Saturday, 10 a.m. to 6 p.m.

Call 541-997-3396 to find out more information.

The Co-op supports local meat producers who raise their animals humanely and without antibiotics and growth hormones.

Library Tidings



News about the Siuslaw Public Library

Library Tidings, a regular feature of the Siuslaw News, features news about upcoming Siuslaw Public Library programs for adults and children, new books and videos, and other library news of interest to the community.

Library Tidings by Kevin Mittge

The White Magic Five and Dime

By Steve Hockensmith and Lisa Falco

Book review by Susie Voth

My first encounter with author Steve Hockensmith was his "Holmes on the Range" series, two cowhand brothers of the Old West solving mysteries in the Sherlock Holmes style.

Many tongue in cheek moments, a few belly laughs and I became a Hockensmith fan. That said, when I spied "The White Magic Five and Dime," written by Hockensmith, on the 14-day shelf, I had to check it out.

Alanis McLachlan trudges through her days as a telemarketer. Life isn't exciting but then it isn't dangerous either. Alanis had her fill of danger in her previous life with her con-artist mother 20 years ago.

Imagine her surprise when she discovers that her estranged mother has left her an inheritance — The White Magic Five and Dime. That isn't all Alanis's mother left her; she left her a mystery. The mystery of who killed Athena Passalis and why?

Well, to Alanis the why is easy — her mother probably conned someone out of something pre-

cious: money or jewelry perhaps.

Although Alanis felt she did not owe her mother tears of grief, she did feel she owed her justice.

This book is a romp. It bounces from the present in Berdache, Ariz., to the past. We meet interesting characters like Biddle (only in flashbacks and italic print), Clarice (an inherited roommate) and Josh Logan (tall, dark, handsome and Berdache's only police detective).

However, my favorite character is Miss Chance, the author of "Infinite Roads to Knowing," a how-to book of tarot reading.

Miss Chance is snarky and a hoot. Her tarot cards are warped, oftentimes hilarious. This aspect of the book is the work of co-author Lisa Falco, a tarot enthusiast since age 8.

This is a fun, fast, engaging read.

Two exciting programs this week

Tomorrow, June 18, don't forget Bob DuBose will be speaking at the library about his experiences in the U.S. Foreign Service at 1 p.m.

DuBose, who worked for the Foreign Service from 1964 to 2000, served in Rwanda, Nigeria, Sweden, Ireland, Jamaica and Geneva, Switzerland, among

other places.

Don't miss this exciting chance to learn about one of the little known, but one of the most important agencies of the United States government.

Also, on Saturday, June 20, beginning at noon, Siuslaw News editor Ryan Cronk will be discussing journalism and answering questions prior to the viewing of a movie about journalism in the United States.

The movie is a dramatization of the story of Stephen Glass, a writer at the New Republic, and his exposure for journalistic fraud.

Endowment books hit library shelves

Following yesterday's presentation of the 2015 Endowment Books, patrons will find a large number of them on display in the library, either on the center display book shelf or on the new shelves. A booklist of selected (but not all) titles is also available.

It's easy to get a library card, which is free to residents of the district. Cards can be obtained at either the main branch in Florence or the Mapleton Branch.

Yard Debris Disposal Next Date is June 20th 9am to 2pm

at the Kingwood entrance to the airport, located at Kingwood & 27th St.

COST

- Pickup load \$10
- Small Utility Trailer (Single Axle) \$10
- Medium Utility Trailer (10-12 ft) \$15
- Large Utility Trailer (12-18ft) \$20
- Greater than 20 cubic yards \$20 +\$5/yard over

- 2015 Collection Dates:
- July 18
 - August 15
 - September 19
 - October 17

Bring:

- Tree Clippings
- Leaves
- Grass Clippings
- Weeds
- Prunings
- Brush

DO NOT Bring your:

- Food & Household waste
- Animal Waste
- Plastics
- Construction Debris
- Hazardous Waste

For questions, please contact the City of Florence Public Works Department at 541-997-4106

Durst, Lehman to speak at City Club Friday

Bill Durst and Mary Lehman will be talking about their experiences with NATO and United Nations at City Club of Florence on Friday, June 19.

Lehman was involved in lobbying for ending nuclear weapons testing between 1986 and 1992.

She has worked as a political activist and environmental activist most of her life.

In Florence, her most recent work has been with seniors in need of care management and advocacy.

Durst has worked with small and major corporations dealing with government agencies, such as Hughes Aircraft Company based in London for a NATO air traffic control system spanning nine countries.

From that position he

became the first non-engineer for that Hughes Division to be assigned as a project manager.

After retirement, he was on the city council of Depoe Bay and in Florence as a member of the core groups founding Backstreet Gallery and KXCR Community Radio, as well as a member of the steering committee for Continuing Learning

Experience Florence at LCC.

The City Club of Florence program begins at noon at Ocean Dunes Golf Links, 3345 Munsell Lake Road.

Meetings are open to the public and a limited lunch menu is available for purchase prior to the program.

For more information call Roger Johnson at 541-902-5135.

CROW awards \$4,500 in summer theater camp scholarships

CROW (Children's Repository of Oregon Workshops)

announced that over \$4,500 in scholarship funds will be awarded to local youth to participate in CROW's 2015 Summer Youth Theatre camp program.

These scholarships will benefit approximately 20 local theater students who would not otherwise be able to afford to attend the two-week programs, which will be held three times at the Florence Playhouse.

The summer camps are the major educational compo-

nent to the CROW theatre program, during which, students learn the key skills required to audition and perform in a main stage show.

In order to obtain a scholarship, applicants were required to submit answers to several essay questions on various topics such as what drives their desire to be involved in the performing arts.

"Once again, we were impressed by the well-written applications, letters of recom-

mendation and touching personal narratives we received via the scholarship applications," said CROW Artistic Director Melanie Heard. "So many local families have overcome tremendous obstacles such as financial difficulties, the passing of loved ones, enormous medical bills, sudden job loss and so much more. We feel very blessed to have the funds to provide to these kids, so that they can attend camps without adding additional stress to their families."

Heard pointed out that none of the scholarship funds would be possible without the support of CROW's audience members, donors, sponsors, and supporters.

"We are fortunate to live in such a vibrant, artistic community that truly understands the importance of quality arts education," she said.

CROW is a 501(c)(3) non-profit organization, headquartered in Florence, with an educational philosophy of "The sky's the limit."

CROW practices what it preaches, which is evidenced by its professional-caliber youth theatre productions.

Local audiences may have enjoyed last April's production of "Once Upon A Mattress" at the Florence Events Center.

CROW is already in the planning stages for an upcoming Spring 2016 musical, the title of which will be revealed on July 31 at 3 p.m. at the Florence Playhouse at the end-of-camp showcase for "Games, Games, Games! Acting and Improvisational Camp."

The showcase and "reveal" is free to the public, although seating is limited and first come, first served.

If you would like more information about CROW, including ways that you can donate to help make many kids' dreams come true, please contact Heard at 541-999-8641 or visit www.crowkids.com.

Your #1 Local Yard, Garden, and Landscape Experts!

Father's Day Sale!



Laurel Bay's Anniversary Sale:

Roman Stack Ashlar Block Wall Systems **Now 15% off**
All Pavers and Stepping Stones **Save an additional 10% off**
Rhododendrons & Azaleas **Now 25% off**

Plant a Tree For Dad!

Plant a Raywood ash tree for gorgeous shades of purple and red in the fall!
All large potted trees (this week only) **10 to 40% off!**

Special Price:

Arborvitae and English Laurels (limited to stock on hand) **\$5.00 off**
All 4" perennials and annuals **Buy 3 get 1 FREE!**

Just in!

Keep your garden healthy!
Beneficial nematodes and ladybugs on sale now!
Colorful outdoor garden furniture and decor
New evergreens perfect for bonsai projects

Lisa's Avant Gardener Tips of the Week



- Prune lilacs, azaleas, and rhododendrons after blooming. Remember to only cut some of the branches on rhododendrons and lilacs as these plants bloom on second year wood.
- Apply beneficial nematodes for root weevil problems on azaleas.
- Put down bark mulch to conserve water in beds for summer.

"We're glad to get you growing!"

LAUREL BAY GARDENS

Award-winning Landscaping Service

Patios • Water Features • Fire Pits
Outdoor Lighting • Irrigation Systems
Home & Garden Décor

10% Senior Discount Every Tuesday

NURSERY • LANDSCAPING • GARDEN CENTER

88493 Hwy. 101 Florence
Open 7 days • Just 2 min. N. of Fred Meyer

997-5973

www.LaurelBayGardens.com
Find us on Facebook

LEE OMLID ATTORNEY

LIVING TRUSTS

No charge for initial consultation

WILLS • PROBATE • LIVING TRUST REVISIONS



40 Years Lane County
Legal Experience
10 Year Coast Resident

216 Nopal Street (Old Town)

997-9983

Can't understand all their technical mumbo jumbo?

We'll be nice and clear.



Gail Leslie, Au. D.

Sandi Ybarra, Au. D.,
Doctors of Audiology

Call to schedule a consultation.
You'll find we're expert listeners.

FLORENCE: 541-997-7617
1525 12th Street, Suite 2

EUGENE: 541-686-3505 VOICE / TTD
401 East 10th Avenue, Suite 110

www.hearingassociates.net



Hearing ASSOCIATES
Hearing is believing