

THE RECORD

OBITUARIES

COTTER—Mary Elizabeth Cotter, 92, passed away March 13, 2015, in Astoria.



Mary Cotter

She was born in Bandon to parents Thomas Harrison Scott and Laurabelle (Chamberlain) Scott.

Mary was married to Arnold Max Eaker and had a son, Tom Eaker, who died in 1988.

She later married Emery Louis Cotter, who died in 1994, and they had a son, John Cotter.

Her grandson Mitchell Cotter died in 2005.

Surviving her are: her grandsons, Danny and Tracy Eaker, granddaughter Brenda Brady and their families.

Also surviving her is a granddaughter, Melinda Cotter (Cook) and her family; three nieces: Ruth Pratt, Carolyn Ketchum and Rose Mentzer and their families.

Mary lived primarily in Bandon, Walton and Seaside.

She loved mushroom hunting, gardening, her airdales and Southern gospel music.

She will be greatly missed by her family and friends.

REITZ—Edward L. Reitz, 80, of Florence, passed away June 9, 2015.

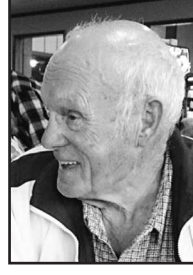
He was born Jan. 11, 1935, in Salem, Ore., to Edgar Brown Reitz and Violet May Garrison.

He graduated from Salem High School in 1954.

He was then a short-trip truck driver in Salem before retiring in 1997.

He moved to Florence in 2005 from Keizer.

He enjoyed walking his dog, Tootsie, on the beach and sand dunes, attending rodeos, traveling, camping and meeting new people.



Edward Reitz

He was preceded in death by his first wife, Patricia J. Hilderbrande, in 2007; and his daughter Cheryl Lynn in 1967.

He is survived by his wife and loving partner Mary Jane; his brother, Bob, of Salem; and two nephews.

He is also survived by Mary's family, who he "married" at their wedding: daughters Laurie Roberts of Christmas Valley, and Leslie Hanson of Salem; three grand-

sons and three great-grandsons in Eugene.

Graveside services will be held this Saturday, June 20, at 1 p.m., at Restlawn Memory Gardens, 201 Oak Grove Road in Salem.

Family and friends are welcome to share their memories.

A gathering will be held at 2:30 p.m. at Lum Yuen's restaurant, 3190 Portland Road in Salem.

SHEPHERD—Janet L. Shepherd, 73, died June 14, 2015.

She was born March 14, 1942.

Memorial services will be held at 1 p.m. Saturday, June 20, at St. Timothy's Episcopal Church, 3295 Ladd Ave. NE in Salem, Ore.

Assisting the family is Virgil T. Golden Funeral Service.

Yard debris burning season ended Monday

Monday, June 15, marked the closing day for backyard burning for most Lane County residents until fall.

The season, which closes in the summer because of fire danger, will remain closed until Oct. 1.

Lane Regional Air Protection Agency (LRAPA's) open burning season normally runs from Oct. 1 through June 15.

However, fire conditions have pushed back the start of open burning season in October. Last year, open burning season was postponed until Oct. 15 due to dry weather conditions and heightened fire safety concerns.

LRAPA works with the Lane County Fire Defense Board to notify the public when delays are announced.

"Annually, LRAPA receives around 300 complaints regarding open burning," said Jo Niehaus, LRAPA spokesperson. "These complaints range

from neighbors burning prohibited materials like garbage to real concerns about out-of-control burn piles.

"Backyard burning in conditions with dry weather and high temperatures increase risks of causing wildfires that can cause damage to properties and destroy homes."

Residents are encouraged to contact their local fire departments if they have questions about burning in their areas.

During the closed season, yard debris may be disposed of at one of several local yard debris and wood recycling centers, such as Lane Forest Products, Rexius Forest By-Products or Lane County's

Glenwood or Florence transfer stations (dump sites).

In addition, both Eugene and Springfield residents and those living within the urban growth boundaries of the cities have curbside yard debris pickup options available with their garbage service.

Composting and chipping are encouraged.

LRAPA also recommends these alternative methods year round to help reduce air pollution from burn piles.

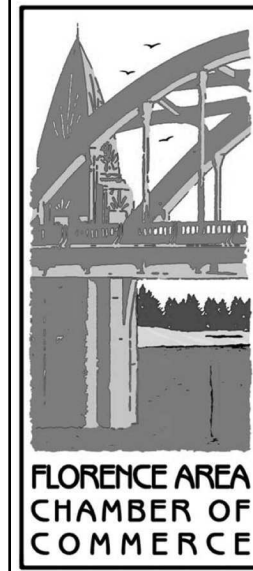
Residents who burn during the closed season are subject to fines ranging from \$50 to \$2,500 or more.

The average residential

open burning fine runs about \$300.

LRAPA closes the season in cooperation with local fire departments. The season opens in the fall after the high fire danger passes.

For more information, visit www.lrapa.org.



Florence Chamber Business After Hours

Hosted by:

BANNER BANK

777 Highway 101, Florence

Thursday, June 18th

5:30-7:00 pm

Join staff and customers of Banner Bank and learn about the new bank from the same friendly staff you've always enjoyed! Food & beverages will be served.

Florence Area Chamber of Commerce

541-997-3128

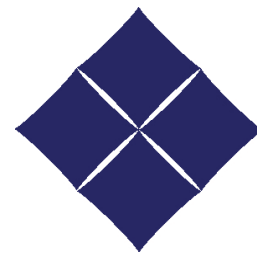
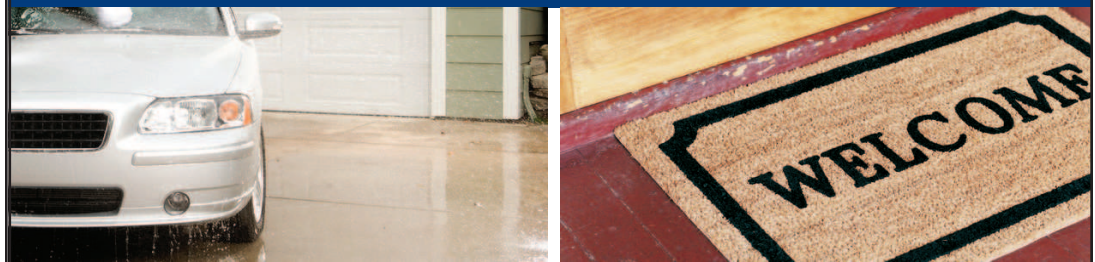
www.florencechamber.com

Come See What We See!
Florence, Oregon

VOICE YOUR OPINION!

Write a Letter to the Editor today. Email Editor@TheSiuslawNews.com.

Insurance you can trust, from an agent you know.



KEEP YOUR INSURANCE LOCAL WITH HELP FROM ABEL INSURANCE
875 HWY 101
FLORENCE, OR 97439
541-997-3466
ABEL@ABELINSURANCEAGENCY.COM

- AUTO
- HOME
- CLASSIC CAR
- MOTORCYCLE
- RV
- BOAT
- CONDO
- RENTERS
- LANDLORD PROTECTION
- UMBRELLA

Safeco InsuranceTM
A Liberty Mutual Company

Safeco Insurance, with a principal place of business in Boston, Massachusetts. ©2013 Liberty Mutual Insurance

CITY LIGHTS CINEMAS

NOW PLAYING JUNE 19 - 25

NEW THIS WEEK:
INSIDE OUT (PG) - New from Pixar! "Sparkling visuals, first-rate voice performances, thrilling adventures and unforgettable moments."
CONTINUING:
JURASSIC WORLD (PG-13) - Run for your lives! The park is open.
SPY (R) "An uproarious blast of globe-trotting action-comedy delirium."
SPECIAL EVENTS:
A VIEW FROM THE BRIDGE - Sat & Wed - National Theatre Live
IRIS - Sun - True Story Encore
THE SEARCH FOR FREEDOM - Tue - True Story Tuesdays
DRIFT / THIS IS OUR WATERSHED - Wed - Short films and panel discussion on aerial spraying. \$5/\$7
AN EVENING OF WORLD MUSIC AND DANCE - Thu - \$10 Members/\$12

Times, tickets, and trailers at CITYLIGHTSCINEMAS.COM
 1930 Highway 101 • Florence, OR 97439 • movie line: 541-305-0014

I WORK WE SUCCEED

Vickie

"I like this job. They are nice and let me do my job."
- Vickie, employee, Eugene Water & Electric Board

Promoting community jobs for people with developmental disabilities

Read more about Vickie's success story:
IWorkWeSucceed.org

DHS
Oregon Department of Human Services
EMPLOYMENT FIRST

How do you know if your bank is local?

Oregon Pacific Bank MEMBER FDIC

Just ask to speak to the CEO. My door is always open!

Ron Green | President/CEO of Oregon Pacific Bank | Direct line: (541) 902-9800 | ron.green@opbc.com

CYAN MAGENTA YELLOW BLACK