

## ASK A MASTER RECYCLER



# The inside scoop on recycling do's and don'ts

SUSY LACER, MASTER RECYCLER  
A MONTHLY COLUMN OF RECYCLING INFORMATION  
PROVIDED BY FLORENCE MASTER RECYCLERS  
For the Siuslaw News

Q. I want to do my part and recycle everything I can, but it seems like the rules keep changing! What things can, and can't, go in my curbside recyclables container?

A. Thank you for asking this important question! It is confusing, and you're right — what is recyclable in our area does change over time, as the recycling industry develops.

Florence currently has two trash haulers, also known as your garbage service; both offer curbside recycling for residential, commercial and multi-family locations.

Both of these haulers have a detailed list of what materials they accept curbside. In case you're wondering, the reason the lists aren't identical is because the commingled items for each of these companies go to a different Materials Recovery Facility.

If you don't have a copy of the list from your provider, just ask — they will be happy to supply one, as well

as answer any specific questions you may have. Keep reading for an overview of curbside recycling for each local provider.

Central Coast Disposal accepts all Plastic bottles, tubs and trays, greater than 4oz., that are labeled #1-5 and #7; rinse all containers and discard all lids.

They accept aluminum and tin food cans, foil and food trays; clean all items thoroughly.

For Paper products, they accept computer paper, junk mail, colored paper, magazines, catalogs, newspaper (including glossy inserts), paper bags, gift-wrap, paperboard (like cereal, soap or shoe boxes), and milk cartons; no food residue allowed.

Corrugated cardboard is also accepted; flatten all boxes.

All of the preceding items can go into the commingled curbside recycling bin. In a separate container, Central Coast Disposal accepts unbroken brown, green and clear

glass bottles and jars; rinse the jars/bottles and discard the lids, labels are okay to leave on.

Again in a separate curbside container, they will also pick up lead acid car batteries as long as they are not leaking, along with motor oil and antifreeze; place each of these in a plastic bottle with a screw top lid. Central Coast Disposal does not accept any styrofoam, plastic bags, plastic film, paper plates/ cups, paper towels/ tissue, or foil paper, in curbside recycling.

County Transfer and Recycling accepts Plastic bottles, jars and jugs; #1-7 labeled bottleneck plastics; plastic dairy tubs (yogurt, margarine); and prescription vials. Aluminum foil or baking pans, and aluminum, steel and tin cans are also accepted.

For paper products, Country Transfer and Recycling accepts office paper, clean paper and mail, catalogs and phone books, newspaper, paperback books, cereal and paper food boxes (liners removed), shoe boxes, milk cartons and juice boxes, and shredded paper (placed in a clear plastic bag).

Corrugated cardboard is also accepted. All of the preceding items

can go into the same commingled curbside bin. In a separate container they accept green, brown and clear glass, as well as motor oil in a leak-proof container.

County Transfer and Recycling does not accept Styrofoam containers or pellets, plastic bags, plastic take-out containers, plastic trays (such as bakery or meat), plastic cups/ plates, plastic utensils, toxic containers (such as antifreeze or oil), greasy or sharp scrap metal, food-soiled paper or boxes, paper towels/ napkins, paper plates, disposable diapers or rags, ceramics or dishes, light bulbs, mirrors or window glass, food scraps, needles or syringes, or hazardous materials, in curbside recycling.

Finally, for area residents who do not have curbside recycling, the Florence Transfer Station now offers commingled recycling for plastic bottles and jars, aluminum foil and cans, tin cans, mixed paper, newspaper, and aseptic (such as juice) cartons and milk cartons.

This commingled bin is in addition to the many other recyclable items accepted at the Transfer Station.

Visit [www.lanecounty.org/recycle](http://www.lanecounty.org/recycle) and click on 16 Disposal Sites for

local details, or ask staff at the site for a free 2015 Handy Home Recycle Poster with simple yes/no instructions on what is and is not recyclable at the Florence Transfer Station.

Q. Are the Florence Master Recyclers going to be involved in the Rhododendron Festival this year?

A. Yes. On Sunday, May 17, local Master Recyclers will have a float in the Grand Floral Parade, decorated with recycled and reusable materials. In addition, they will be performing as the Second Hand Band featuring instruments created from recycled and reusable items.

*Florence Master Recyclers are part of the Lane County Master Recycler Program, a service of the County's Public Works Waste Management Division. The mission of the MR program is to bridge the gap between awareness and action by motivating people to reduce solid waste at home, work and play.*

*This monthly column, written for the Siuslaw News, answers commonly asked recycling questions. Follow Master Recyclers of Florence on Facebook.*

## Third trimester property tax payments due soon

Splitting your property tax payment into trimesters this year? If so, your third trimester payment is due Friday, May 15.

To avoid a penalty, payments must be submitted or postmarked on or before May 15.

The assessor's office offers the following tips to avoid incurring a penalty:

- Live in a rural area?

Mail your payment early. Post offices in rural areas often bring mail to a central location for postmarking.

Payments submitted on May 15 may not be postmarked the

same day.

- Using your financial institution's bill pay service? These services often take a day or more for your payment to be submitted.

- Pay in person at the Tax Payment Counter on the lower level of the Public Service Building in Eugene at 125 East 8th Ave.

The Tax Payment Counter will be open during normal hours, Monday through Thursday from 10 a.m. to 3 p.m. and will open for an extra day on Friday, May 15 from 10

a.m. to 3 p.m.

- Pay online.

Individual property account information is available online.

Taxpayers can view any tax balance, make a payment, find current and prior year tax statements, and review appraisal information through the Assessment and Taxation website at [www.lanecounty.org/at](http://www.lanecounty.org/at).

Property tax payments can be made using a MasterCard, Visa, or e-check only through the Lane County Assessment

and Taxation website (not in person, via mail, or over the phone).

A bank processing fee will be assessed for the service. Lane County does not retain any portion of this fee.

As a reminder, interest is calculated on past due amounts one day following the due date of each installment.

If you have any questions about your account, call our Public Information Line at (541) 682-4321 between 10 a.m. and 3 p.m., Monday through Thursday.

## Upcoming FRAA Art Fest featured in Oregon Coast Magazine

Florence Regional Arts Alliance (FRAA) and its upcoming Rhody Days Arts Festival is featured in the May/June edition of Oregon Coast Magazine, as is artwork of local artists.

The Arts Festival will be held Saturday, May 16, from 11 a.m. to 5 p.m., and Sunday, May 17, from 10 a.m. to 4 p.m., at the Florence Events Center.

"The art festival is an eclectic show and sale of unique works of art and fine craftsmanship by both local artisans, as well as those from all over Oregon," said Claudia Brown, festival coordinator.

Admission is free, and 10 percent of the artisan sales go toward funding the FRAA Art Center.

"FRAA has a mission to support all of the arts, enrich cul-



COURTESY PHOTO

This oil painting by FRAA artist Claudia Ignatieff is featured in the May/June issue of Oregon Coast Magazine.

tural life, and stimulate the economic vitality in the Florence

area through the arts" said Harlen Springer, FRAA Board

president.

The Alliance supports art education classes for adults and youth, provides space for Artists in Residence, organizes special arts events, promotes Florence as an arts community, and works to bring more art to the area with grant funding.

The Oregon Coast Magazine article displayed an oil painting of a humpback whale by artist Claudia Ignatieff, and an oil painting of a bear by artist Ron Hildenbrand.

Artist John Leasure was also pictured, teaching his Saturday morning oil painting class at the FRAA Art Center.

The FRAA Center is located at 4969 Highway 101, in Munsel Lake Plaza No. 4.

For more information, visit [www.fraaoregon.org](http://www.fraaoregon.org).

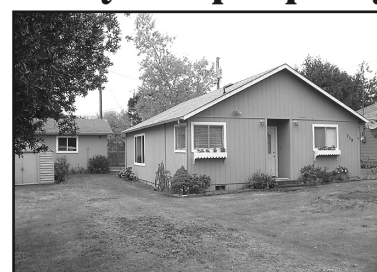
## Let me Showcase your property.



**Chris Bunch**  
Principal Broker /  
Property Manager  
541-997-8877



1749 Highway 101 • 541-997-1200



739 Kingwood St – Cute, move in ready, in-town home with open floor plan, living room with slider, master bedroom with large closets, washer, dryer and newer appliances included. Oversized garage and RV parking with hookups. \$138,000. #2441-15490110



## When Your illness, aches and injuries won't wait for an appointment

Our Walk-in Clinic is here for you, providing high quality care when you need prompt medical attention for non life-threatening conditions.

Check-In: Monday-Friday 6:45 am-6:30 pm  
Saturday 7:45 am-5:30 pm



380 Ninth St.,  
Florence, OR 97439  
541-997-7134

[www.peacehealth.org/phmg/florence](http://www.peacehealth.org/phmg/florence)

## Denture Services, Inc. COMPLETE DENTURE SERVICE



William A. Foster, L.D.  
Denture wearer

Sherry  
Office Manager

## FREE CONSULTATIONS

- Dentures
- Relines
- Partial
- Repairs
- Implant Retained Dentures

**William A. Foster, L.D.**  
"Locally Owned and Operated"  
Serving the Central Oregon Coast  
Emergency Appointments Available

**Denture Services, Inc.**  
524 Laurel Street, Florence  
**541-997-6054**

**Voice Your Opinion! Write to:**  
[EDITOR@THESIUSLAWNEWS.COM](mailto:EDITOR@THESIUSLAWNEWS.COM)

DEADLINE FOR PRESS RELEASES IS EVERY MONDAY AND THURSDAY BY NOON. EMAIL [PRESSRELEASES@THESIUSLAWNEWS.COM](mailto:PRESSRELEASES@THESIUSLAWNEWS.COM).

**Simplify your financial life. Let's talk.**

**Andy Baber, AAMS®**  
Financial Advisor

1010 Highway 101  
Florence, OR 97439  
541-997-8755  
[www.edwardjones.com](http://www.edwardjones.com)

**Edward Jones**  
MAKING SENSE OF INVESTING

Member SIPC

Care to hear a little secret?



Gail Leslie, Au. D.

Sandi Ybarra, Au. D.,  
Doctors of Audiology

Not all hearing aids sound the same.

Call to schedule a consultation. You'll find we're expert listeners.

FLORENCE: 541-997-7617  
1525 12th Street, Suite 2

EUGENE: 541-686-3505 VOICE / TDD  
401 East 10th Avenue, Suite 110

[www.hearingassociates.net](http://www.hearingassociates.net)



**HEARING ASSOCIATES**  
Hearing is believing