



Siuslaw News

WEDNESDAY

WWW.THESIUSLAWNEWS.COM

SERVING THE COMMUNITIES OF FLORENCE • DUNES CITY • WESTLAKE • MAPLETON • SWISSHOME • DEADWOOD • YACHTS AND ALL POINTS BETWEEN

125TH YEAR • ISSUE No. 36

MAY 6 • 2015

\$ 1.00

ROCK AROUND THE COURT TONIGHT

2015 Rhododendron Scholarship Showcase presented at FEC

By CHANTELLE MEYER
Siuslaw News



Princes Joseph Dotson, Keoni Castro, Trey Cornish and Jonathan Griffes



COURTESY PHOTOS

Princesses Kennedy Roylance, Trista Lane, Courtney King, Bailey Wells and Natalie Madden

Senior Court

Princess Ariana Galvan Mendez, Mapleton Elementary third grader,

said, "I always wanted to be a Rhody princess my whole life."

Fifth-grade Princess Elizabeth Perez, Siuslaw Elementary, said, "I know that

the Rhody Junior Court is a very important group in the community. I hope to help the community, just like the princesses have done in the past."

There are many reasons to join the court, and students had to apply and explain why they should be chosen.

"I want to be a princess because I like being nice and helping people," said Siuslaw Elementary first-grade Princess Olivia Moore.

"It would be something that I could be proud of," said Siuslaw Elementary second-grade Princess Adelaide Ficcadenti. "Also, princesses make people smile. I love making people smile."

See COURT 9A

OPB to close Safeway branch

Main branch to extend hours, add Saturday banking to compensate

By JACK DAVIS
Siuslaw News

Florence-area customers of Oregon Pacific Bank (OPB) recently received letters announcing the pending closure of the bank's Safeway branch, at 700 Highway 101, on July 31.

On Saturday, Aug. 1, the main OPB branch, at 1355 Highway 101, will begin Saturday banking from 9 a.m. to 1 p.m. and will extend weekday business hours to 6 p.m., Monday through Friday.

The Safeway branch has been in operation since June 1, 1995.

"We have been monitoring activities in the Safeway branch for better than two years," OPB President Ron Green said. "What drove this decision was technology."

According to Green, online banking, mobile banking and ATM machines are how many people now get their account information and services from banks. He said this has driven the number of transactions down at the Safeway branch.

"Virtually 100 percent of all new account, lending and wealth management services are administered from our Florence branch," Green said.

In addition, the bank's lease was expiring and Safeway wanted OPB to sign another 10-year lease.

"Given that this is a duplication of services we offer right down the street, we felt that it wasn't cost effective for the bank," Green explained. "We look at our clients, our staff, our shareholders and our community and we make business decisions based on what the impact is on all four."

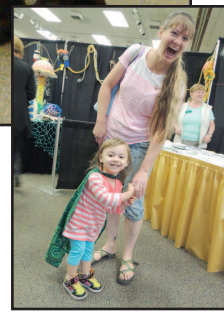
"Clearly, when we are paying to operate a branch that is essentially doing the same thing a few blocks down the street; that was redundancy we needed to eliminate."

See BANK 9A

FLORENCE GREEN FAIR



PHOTOS BY RYAN CRONK & JACK DAVIS/SIUSLAW NEWS



LIVE GREEN

More than two dozen vendors filled the Florence Events Center last Saturday, sharing environmentally friendly products, advice and ideas with hundreds of visitors during the sixth annual Florence Green Fair. New to this year's event was the Kids Zone, featuring interactive craft projects and a planting station just for youth. Rhody Court royalty helped out with the event, and JR Beaver from the U.S. Forest Service made a special guest appearance. More photos will soon be posted online at www.TheSiuslawNews.com.

See BUDS 9A

Marijuana business expands to Florence

Buds4U to open city's first medical marijuana dispensary

By CHANTELLE MEYER
Siuslaw News

The City of Florence could have its first operational medical marijuana facility as early as May 12.

At the Planning Commission's recent meeting, commissioners approved a conditional use permit for Buds4U to operate a medical marijuana facility at 1480 Rhododendron Drive. Buds4U also operates at 10692 Highway 126 Suite No. 2 in Mapleton.

According to Oregon Health Authority (OHA), "A medical marijuana dispensary is a facility, registered by OHA, that is allowed to receive marijuana or immature marijuana plants and transfer that marijuana to a patient or a patient's caregiver with an Oregon Medical Marijuana Program card."

City staff and the Planning Commission defined several conditions for Buds4U's Florence permit.

Dustin Foskett, who applied for Buds4U, responded to each condition, including agreeing to the planting of trees and shrubs, the addition of a curb and defining the driveway and parking.

Buds4U is only waiting on a permit from OHA to begin dispensing on or after Tuesday, May 12.

Foskett, who describes himself as a "local boy," also addressed the Planning Commission and the audience with an opening statement.

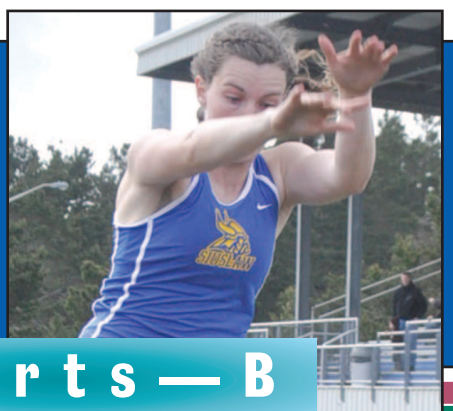
"I felt that as a local boy I should address the public, the local community, with any concerns," he said.

"It is the position of Buds4U that the business of the medical marijuana facility is providing multiple social benefits to the local community," he said. "These benefits have to do with, but are not limited to, safeguarding minors from acquiring marijuana illegally, providing medical alternatives to our community and contributing to the end of marijuana prohibition."

| INSIDE WEDNESDAY | | |
|------------------|----|---------|
| Classifieds | B8 | Police |
| Library Tidings | A5 | Sports |
| Obituaries | A6 | Tides |
| Opinion | A4 | Weather |
| | | A2 |



| Your Weather | | | |
|--------------|--------------|--------------|--------------|
| TODAY | THURSDAY | FRIDAY | SATURDAY |
| | | | |
| Cloudy | Partly Sunny | Partly Sunny | Mostly Sunny |
| 56 43 | 59 45 | 62 46 | 63 48 |



Sports — B