

# ACREAGE...THE PRIVACY AND SPACE YOU DESIRE



**\$299,900**

### PRIVACY NEAR BEACH

The minute you drive up the private paved road, you will fall in love with it. Sitting on 4.19 acres with 1814 sq ft of living area, this 1995 built home pays attention to detail. Windows everywhere give you views of the delightful outdoors with its many trails, wooded privacy & artist studio. Inside the 3 bedroom, 2 bath home are wood floors, granite kitchen counters, sun room off dining room & a great entertaining area. #10963 MLS#15543921



**\$205,000**

### SECLUDED HOME ON 2 PLUS ACRES

Ideal for RV enthusiasts. Close to dunes, fishing & coastal activities. Quality, well maintained home; Berber carpet, Quadra-fire EPA certified woodstove, jetted tub in master. Covered deck off kitchen. RV Hook-up, circle drive around house for easy RV & truck/boat trailer maneuvering. Well built storage building w/electricity. Must see! #10901 MLS#14190980



**\$269,000**

### LAKEFRONT CABIN ON SILTCOOS LAKE!

Remodeled lakefront cabin! 3+ acres of privacy on Miller Arm. Great location with close boat access from Nightingale's Fishing Camp. Remodeled & updated while retaining fir floors & wood ceilings. Clear story windows brighten warm interior. Cook's kitchen & fully furnished. Great dock for relaxing & fishing, includes boat. Call for a short boat ride! #10691 MLS#13656572



**\$425,000**

### BEAUTIFUL 6.1 ACRES LOCATED NEAR TOWN

Three bedrooms, 1.5 baths, 1404 sq. ft. home with large deck, 2-car garage, pellet stove. Munsel Creek runs through property for a park-like setting. Located in Urban Growth Boundary, buyer to check on development potential. #10269 MLS#11017001



**\$59,900**

### LARGE LOT IN HECETA SOUTH

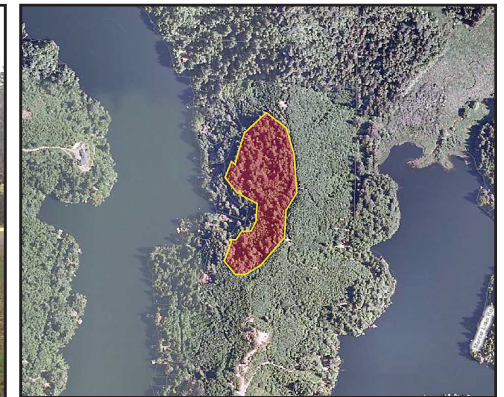
Large beach area parcel, 1.56 acres, in Heceta South subdivision. #10913 MLS#14608663



**\$179,000**

### GREAT INVESTMENT PROPERTY

Great rental property on 1.42 acres in Westlake. 1940's home with 3 bedrooms, 1 bath. Rental income is \$850/month. #10965 MLS#15066856



**\$199,000**

### MERCER LAKE VIEW ACREAGE

Overlooking Dahlin arm. Eleven+ wooded acres, rustic and private, yet close to town. Two possible building sites, according to owner, plus value in timber. #10517 MLS#12351604



**\$190,000**

### CLOSE IN COUNTRY LIVING!

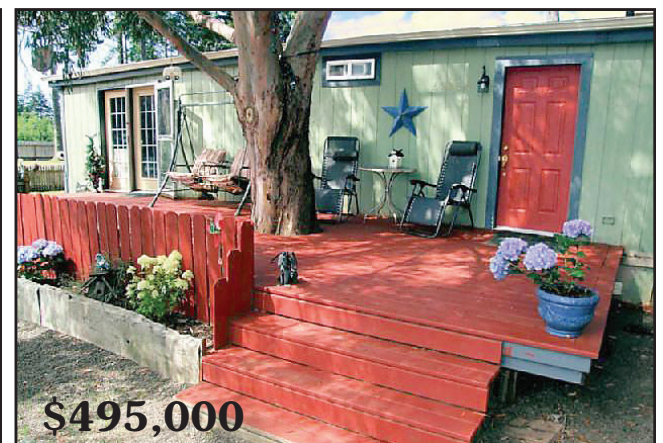
Small close-in acreage with a fruit orchard and room to garden. Oversize detached garage with his and her offices or craft rooms. Extra RV tent for outside storage. #10966 MLS#15699398



**\$285,000**

### 9347 HWY 126 - MAPLETON

Charming 1900 home in tiernan with 15.84 acres. There are 4 bedrooms and 3 baths on 2 levels in this quaint 1,920 sq. ft. home. Garage was converted to living quarters where owners live. Great property for a great price! #10900 MLS#14105436



**\$495,000**

### SPACIOUS & COMFORTABLE ON 6.2 ACRES

HUGE BACKYARD! Mostly level, landscaped yard with trees & lovely shaded areas. Beautiful setting is currently location of "Pitch & Putt", 9-hole golf course/recreation facility. Priced is for land & improvements only. Business included at no charge. Enjoy life on the Oregon Coast with or without a nice seasonal business to run. Who could ask for anything more?! #10880 MLS#14160742