

WATERFRONT / WATER VIEW LOTS – READY FOR YOUR DREAM HOME

\$120,000



LOT 80 SHORELINE DRIVE

Beautiful riverfront / ocean view lot located in upscale neighborhood of fine homes. Shelter Cove gated community in the heart of Florence. Protective covenants. Build your dream home with a fabulous view. 0.76 of an acre. #10188 MLS#11631654

\$325,000



LOT ON CLOUD NINE ROAD

“Woods on Woahink” - waterfront lots on Woahink Lake. Very private 1.24 acre wooded lot on end-of-road cul-de-sac. This is one of the very last building sites available on the lake. Build your dream home among the old growth trees. Swim, boat, or just watch the sunset from your own dock. #9362 MLS#9058374

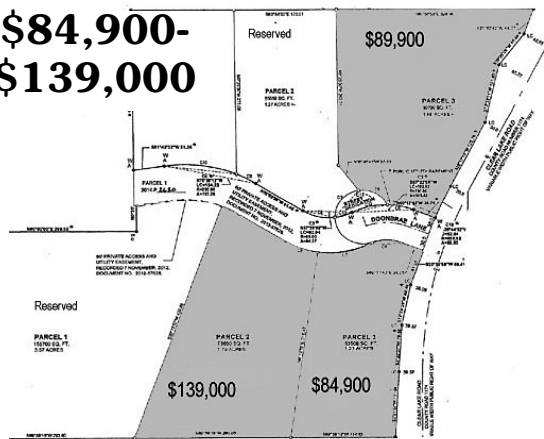
\$145,000



LAKE VIEWS & WOODED PRIVACY ON 1 ACRE

One acre lot very near Woahink Lake. All underground utilities, lake water lines in, septic approved. Excellent neighborhood of finely crafted, newer homes. Good views of Woahink Lake and nice canopy of trees for privacy. #10909 MLS#14491387

**\$84,900-
\$139,000**



WOODED HOMESITES NEAR SOUTH LAKES

Exciting new offering: 3 heavily wooded home sites varying from 1.2 to 1.8 acres. Underground utilities, water, paved roadway and septic approved. Stick-built homes only with tree preservation setbacks. Offered with possible owner financing makes this a great opportunity to build now or later. #10923-5/MLS-multiple

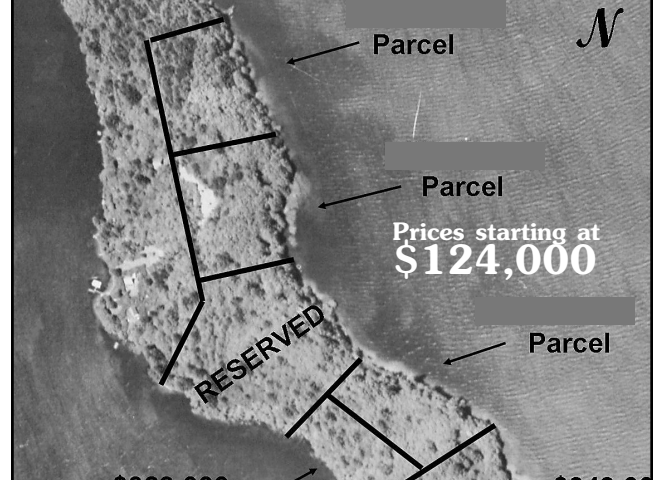
\$125,000



RARE LOT – READY TO BUILD

This lot is elevated above the shoreline to give perfect panoramic views. Architect plans for 3300 sq. ft. home are available for inspection and were approved by Home Owners Association and Lane County in 2007. #10194 MLS#11516115

Parcel
Parcel
Prices starting at
\$124,000
Parcel



FOUR SPECTACULAR LAKEFRONT PARCELS

on Booth Island in Siltcoos lake, ranging in size from 2.6 to 4.6 acres. “Escape the Ordinary” in a park-like setting that can not be duplicated! Trades considered. 4 parcels to choose from.

\$405,000



COLD SPRINGS LANE

One of the last great waterfront lots on Woahink Lake. Views of lake, dunes and sunsets. Use of the new community dock adjacent at Sunset Cove. Located on the end of very private street in residential Dunes City. The vegetation is trimmed to allow easy foot access for review of potential building sites. All services are available and the lot is ready for the home of your dreams. #9638 MLS#7095345

\$139,000-\$229,000



SUNSET COVE SUBDIVISION

Now is the time to own your piece of the Oregon Coast. Planned, private, secured & buildable lots with lake frontage & views of the dunes & sunsets. Lots of common areas including a long dock with boat moorage. Boating, swimming, fishing & relaxation in your backyard. #10369

\$299,000



“ESCAPE THE ORDINARY”

Booth Island, a pristine Island in Siltcoos Lake, located south of Florence. This is the ultimate island retreat. Green & solar! Private location, just minutes to the ocean, rivers & dunes. Invest now in waterfront property at lower prices and consider building later. #10169 MLS#11460050