

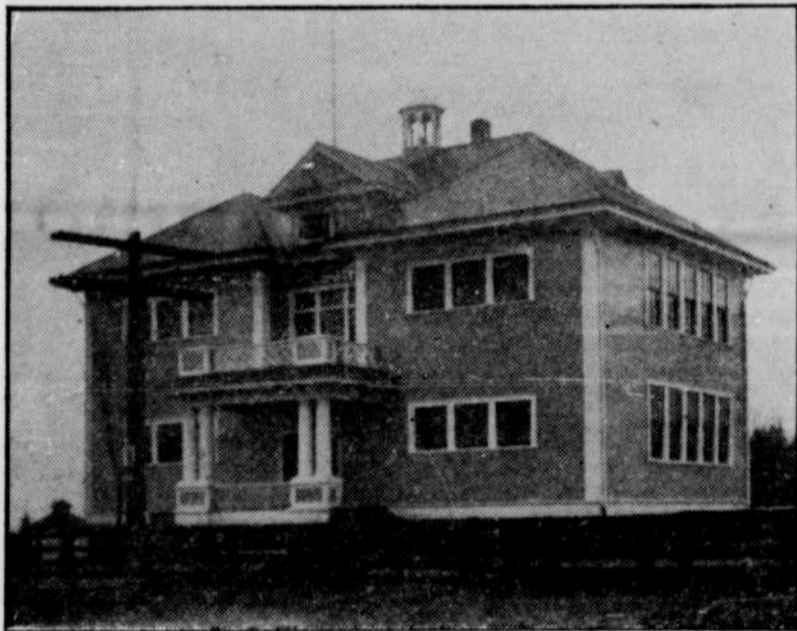
BORING

A Thriving Town on the O. W. P.

Boring is a thriving village 21 miles east from Portland, and 9 miles southeast from Gresham on the summit of the O. W. P. line. It is the center of a large farming, dairying and lumber industries. Three-fourths of a mile from here is the large 400-acre dairy farm of the Damascus Creamery, with its fine herd of cattle and large barns. R. L. Sabin has just finished one of the finest barns in Clackamas county for the housing of cattle, it having cost \$3500. Milk and cream in large quantities are shipped from here on the morning express. The milk wagons coming from miles around before daybreak to enable them to get their milk to Portland in the early part of the day. The soil here is specially adapted to fruit and vegetables. Many cars of the finest potatoes grown in the state are shipped from here annually. This is also the railroad point for everything east to Mount Hood, a stream of teams coming and going all day bringing ties, lumber, wood and potatoes, and hauling back mer-

logs per day, which are sent to the Portland mills. The Unique Brick company also has a large brick plant about one mile north from Boring, where a fine quality of brick clay is found. This is also the transfer point for resorts at the foot of Mount Hood. Through stages leave here every morning for Welches. During the summer months auto stages are run to take care of heavy travel. This district is advancing very rapidly. Several large tracts are being cleared and placed on the market. The 100-acre farm of Mr. Ellis, west of here, is being cut into five- and ten-acre tracts. Mrs. A. Vester has placed 160 acres adjoining Coolridge homes addition to Boring on the market. It has been cut into ten-acre tracts and named Fairmount Orchards. Several homes have been built the past few months. J. W. Roots has also built a \$2500 addition to his store building, giving an up-to-date general store. The Boring postoffice has grown very rapidly, having three rural routes, covering a large territory, and a Star route, being the distributing office,

of A. The O. W. P. has a steam plant here which is used for furnishing power in an emergency. The railway company is also making arrangements for the erection of a new depot. During 1910 there were over 946 cars of wood, 723 cars of ties and eleven cars of potatoes shipped from Boring, and over 50 cars of feed shipped in, and over 2000 tons of merchandise. Wm. Morand.



Powell Valley Public School

chandise and feed for the merchants at Sandy and points beyond. Boring is the principal tie and wood shipping point on the O. W. P. line. Several cars of ties and wood are shipped every day. It is no unusual sight to see from 15 to 20 cars waiting to be loaded with ties, and the same number of wood cars. The Olson Lumber company, the Strauss Lumber company, The S. P. H. company, the Firwood Mills and Jønsrud Bros., using this as their shipping point. The loading and inspection of the ties is done under the supervision of F. M. Morgan. Several carloads of feed are shipped in here every month for the use of teams and the dairyman. Three-fourths mile to the north are located the camps of the Bramhall Logging company. They have a spur track running back two miles into a fine belt of saw timber and operate their cars with a steam engine. They also have several Donkey engines and employ about 40 men, loading five to six cars of

supplying mail for Sandy, Bullrun, Dover, Cherryville, Brightwood, Marmot Rowe and Welches. It is also an international money order office. It has recently been moved into new quarters, giving the patrons an up-to-date office, with Amy L. Morand and Wm. A. Morand as postmistress and assistant. David Wolfe, R. D. Carrier No. 1, Wm. E. Child, R. D. Carrier No. 2, and Sarah E. Frank, R. D. Carrier No. 3. We also have a good school, with Miss Hansen and Miss Lovelace teaching 80 pupils; a Methodist church, Rev. A. B. Calder, minister; and several business firms—J. W. Roots & Co., general merchandise; S. E. Cord, grocer; L. Ritzer, confectionery and cigars; M. A. Humfleet, confectionery and bakery; E. F. Donahue, livery and stage line; R. S. Smith, blacksmith; Pearl Wallace, barber; and the Boring Hotel. Several lodges have been organized, Boring Assembly, 270, United Artisans, which has a good membership, and Boring Camp 7713, M. W.

R. E. JARL

Dealer in General Merchandise
Dry Goods, Groceries

WEAR
American
Gentlemen's
SHOES

BOOTS and SHOES

WEAR
American
Lady's
SHOES

FLOUR and FEED
BUILDERS' SUPPLIES

KELSO, - OREGON

J. W. ROOTS & CO.

General Merchandise

DRY GOODS, BOOTS and SHOES, BEDDING
FLOUR, FEED, SAND, GRAVEL
SHINGLES, PAINT

Boring, Oregon

R. S. SMITH

GENERAL
BLACKSMITHING

Repair and Wood Work

EXPERT HORSESHOER

Customary Prices

BORING, - OREGON

Stage leaves Sandy for Boring at 5:45 a.m. and 2 p.m. Leaves Boring for Sandy at 8:03 a.m. and 4 p.m. At Sandy makes connections with the Salmon and Welches Mail Stage, also makes connections with Aschoffs.

BORING - SANDY STAGE LINE

First-Class Livery and Feed
Stables at Boring and Sandy

Transportation of all kinds
of Baggage to Sandy and
interior points

For further information phone or write

E. F. DONAHUE, Prop.
Boring, - - - Oregon