

**Alfalfa Growing.**

The introduction of the alfalfa plant was a boon to the stock grower. Along all the creeks and wherever water can be obtained the land is put to alfalfa which produces an immense yield of choice feed especially for cattle and sheep. In favored sections three crops are cut in a single season and the yield is from two to six tons to the acre. On the hill and plateau lands rye, barley and wheat hay is grown which also yields well. This hay is usually stacked in long ricks in the open air. Many of these stacks can be seen that have stood for two or three years, showing that the stockmen always keep well supplied with feed.

While agriculture is encroaching rap

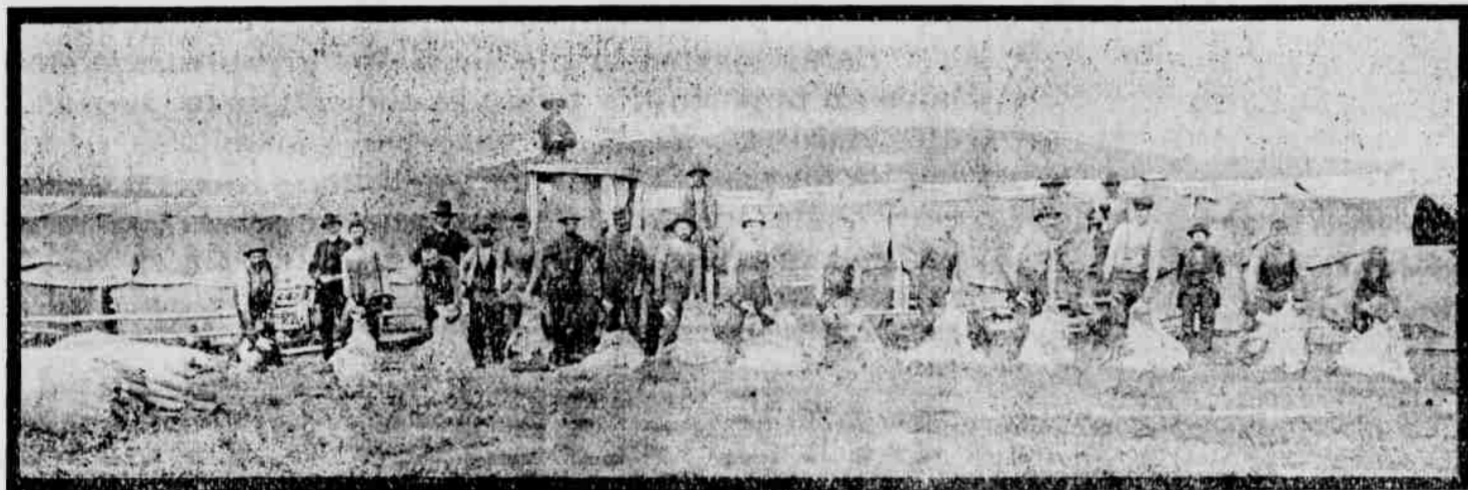
only being outlashed by Umatilla and Sherman counties. This wheat is grown in a sparsely settled country and only the choice wheat lands are yet in cultivation.

The wheat district proper is in southwestern portion of the county, extending from Hardman in the foot hills of the Western spur of the Blue Mountains to Douglas in the extreme western portion of the county, comprising a comparatively narrow belt of plateau lands, taking in the Eight Mile, Gooseberry, Lone, Douglas, and Lexington districts.

For the crop of 1902, the wheat acreage was greater than ever known in the history of the county, and consequently the crop of the past year was the greatest ever harvested. The average yield

of land. This I got from the government. Three years ago I bargained for another half section, giving 3000 bushels of wheat for it. I sowed the land and raised the wheat in two years."

Other instances of this kind could be related. During the past six months there have been many real estate transfers in Morrow county. Most of the lands sold have been wheat lands in the lone and Douglas wheat districts. The purchasers have been principally from Sherman county. Sherman is a great wheat country, and the fertile plains that are producing immense crops are now worth \$20 per acre. Morrow county has the same character of soil, and apparently just as good land, but the records show prices of from only \$6 to \$8



idly upon the stockmen's territory, the fact that there is such a large amount of tributary range land and a large amount of the foot hill lands that are too rough for cultivation, the stock business will be an industry of great importance in Morrow county for many years to come. On the rough lands and hills which seem to be barren, bunch grass thrives and these hills furnish good pasture for thousands of hoofs.

Stock countries everywhere are prosperous, for the contraction of ranges by

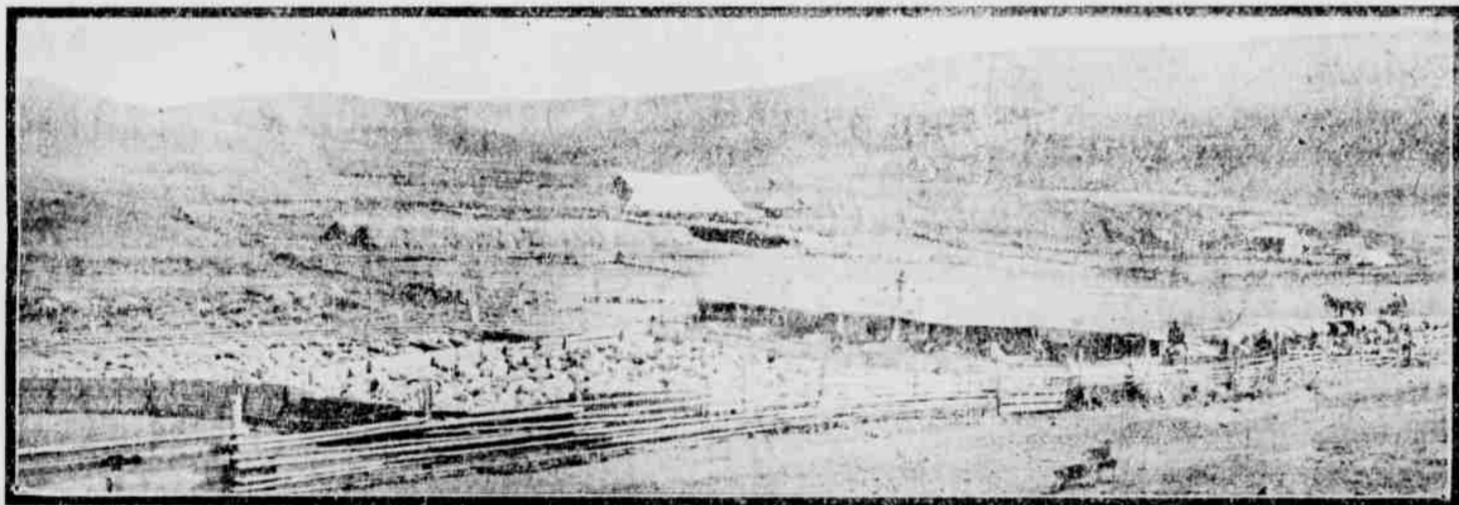
was a little below the average, making about 15 bushels to the acre.

Farming here has not yet reached a high standard. Very few, if any farms are in a high state of cultivation. The tendency is to get over large tracts with as little expense as possible. Summer-fallow is worked little if any, and as it has been remarked, in plowing in some places only the high places are hit. Some of the stubble ground is sown without plowing and scratched in with a spring tooth harrow. But good crops

per acre for the choice tracts that have changed hands in Morrow. The shrewd Sherman county buyers are taking advantage of this condition of affairs. Some of this land that was purchased in large tracts has already been cut up into small farms and sold for \$10 per acre. Morrow county land values will keep on increasing until the real value is reached and be on an equality with other good wheat producing sections of the state.

**Soil Very Fertile.**

The soil here being mixed with a vol-



the advent of settlers cuts down the supply which causes a demand at prices that are profitable to the man who has stock to sell. While the grower makes money, it is also necessary for him to pay out much money in conducting the business.

**Stock Growing Distributes Money.**

Many men are employed in taking care of the stock, putting up feed and the necessary details connected with each branch of the industry. For this work, growers are able and pay good wages. For sheep herding, men are paid from \$35 to \$40 per month in the summer and from \$30 to \$35 in the winter. This is about the average, however, some herders are paid more.

The sheep shearing season which commences during the latter part of April and ends in the latter part of May, furnishes employment for a number of people. Shearing is skilled labor. Prices paid for shearing are from six to seven cents per head. Good shearers turn off from 75 to 100 head per day. With some picked crews with favorable conditions 100 sheep per day is the minimum. These men make from \$5 to \$8 per day during the shearing season.

With the large number of stock handled and the great amount of wool shipped it would appear that Morrow county is only a stock country. The county is not only a good stock country but a great agricultural country as well.

**Great Wheat Country.**

For the year 1902, Morrow county produced 1,200,000 bushels of wheat. A great many people even in this county do not realize that of the many wheat producing counties of the state of Oregon, Morrow stands third in the list,

are grown.

**Easy Farming.**

The character of the soil makes farming easy. The soil is loose and light and easy to plow. The same amount of labor here will cultivate a larger area than in most farming districts. The soil certainly contains great wheat producing qualities. During the past year, volunteer wheat, that is, wheat that was scattered upon the ground, produced as high as 18 bushels to the acre without any cultivation or a dollars expense, except that of harvesting.

About 1,000,000 bushels of the crop of 1902 was exported, the local demand requiring about 250,000 bushels. The bulk of this crop was sold early in the fall at an average of about 52 cents per bushel, which brought a fair return of profit. Farmers state that wheat can be grown here at a small profit at 50 cents per bushel.

**Increasing Land Values.**

It having been thoroughly demonstrated that this is a great wheat country has had a tendency to greatly increase land values within the past two years. Less than five years ago, land was sold at from \$200 to \$400 per quarter section, and buyers were not numerous at these prices. Today this land is worth from \$800 to \$1500 per quarter.

The following news item clipped from the regular issue of the GAZETTE of October 23, will give an idea as to the increase in land values:

"County Commissioner E. C. Ashbaugh has sold his fine wheat farm of 640 acres in Eight Mile, to F. P. Vaughn for \$6000. In speaking of the sale, Mr. Ashbaugh said: "I landed in Eight Mile 14 years ago with 25 cents in my pocket. Land at that time in this district had little or no value. I traded a \$3000 case for a man's right on 320 acres

of land is loose and light and very rich, containing grain producing qualities. Farming operations have proven that the soil improves with cultivation.

**W. T. HATTEN**

Has opened a new Blacksmith shop opposite the city feed yard.

**GENERAL BLACKSMITH**

Having had years of experience, my work speaks for itself, and I expect to stand on my merits as a workman.

**HORSESHOEING AND WOOD WORK.**

I mak a specialty of shoeing horses, any and all kinds, from fresh off the range to work horses, roadsters and racers. My shoes are carefully shaped and fitted to the horse's foot.

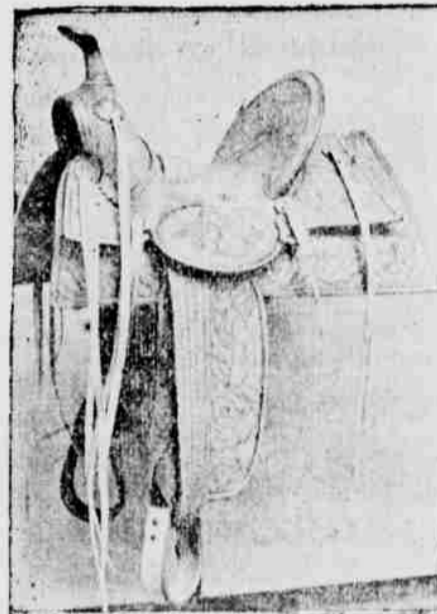
Repair Work a Specialty.

**D. W. Hornor.**

Inventor and Maker of the Celebrated

**Heppner Saddle**

Being an old range rider, I learned the trade from actual experience as a cowboy. My saddles are made from the best material that money can buy, and built by the most skilled workmen



**Twenty-Five Years Experience in Saddle Making**

My trade extends all over the United States, especially in Wyoming, Montana, North Dakota, Nebraska and N. W. territory. No catalogue.

Drop a Card for Photographs.

When cultivated and exposed to the action of the elements the original character of the soil changes and becomes more productive. This soil has a wonderful faculty of holding moisture.

Hands Paid High Wages. Natural conditions here are favorable to grow wheat cheaply with the exception of hired help. For the past year hands have been very scarce, and while

In connection with this Hotel is the :: :: ::

**PALACE : BAR**

The finest Establishment of the kind to be found in Heppner. A full line of :: :: :: ::

**Wines, Liquors and Cigars**

kept constantly on hand. Sample them and be convinced. :: :: :: ::

**Old Liquors a Specialty**

**Palace Hotel.**

PHIL METSCHAN, JR., Prop

Why not patronize the best and help support a business that will help you. Heppner enjoys the distinction of supporting the

**Largest Hotel of any Town of its Size in the West. . .**

We have had a good patronage the past five months and will continue to make improvements in the future. We have recently ordered a lot of new

**MATTRESSES AND FURNITURE**

and will not have an undesirable room in the house. The tables of the Palace Hotel were never better.

**"Courtesy" is our Motto**

and we will take pleasure in administering to the comfort of our guests.