

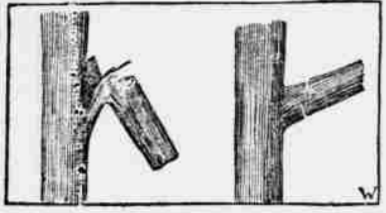
FARM AND GARDEN

CORRECT PRUNING.

The Right and Wrong Way Illustrated and Described.

The question frequently arises when to prune. Among the earlier horticulturists this question was often answered as follows: Prune when your knife is sharp. This is a comparatively safe method to follow with some plants, but where the problem involves the management of extensive commercial plantations it is not so easy to prune in this miscellaneous fashion, remarks New England Homestead. The work must necessarily be done at some particular season and carried on in a systematic manner after some definite plan.

With most orchardists and gardeners pruning can best be done during the winter or early spring months, and where the object is the removal of small branches this season is undoubtedly quite as satisfactory as any other. In fact, pruning during late



PROPER AND IMPROPER PRUNING.

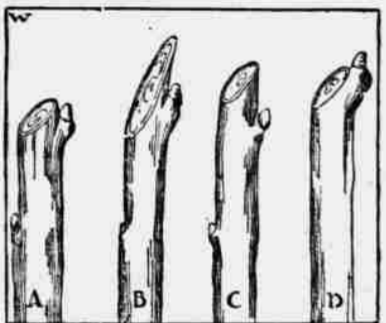
spring, about the time or just previous to the beginning of growth, is particularly advantageous with the peach, because at that season, as a rule, all injury to the animal growth from winter killing will be apparent, and the pruner can take advantage of this to remove all dead or injured branches and at the same time modify his plan so as to leave a maximum quantity of wood in order to secure a profitable crop of fruit, which might not be possible were the usual practice of removing half the annual growth followed in such seasons.

With apple and pear, which suffer less from winter killing, the annual pruning can as well be done in March in the north as at any other season. With the grape, however, which is likely to produce a heavy flow of sap if the pruning is delayed until late in the season, it is undoubtedly best to do the pruning during the late fall and early winter months.

When the pruning involves the removal of annual growth rather than large branches, the cut should invariably be made immediately above a bud, as shown in the first figure at A. Never cut as indicated at B, C and D. All wounds that are made should be left smooth—that is, if it is necessary to use a saw in removing a large branch the cut surface should be left smooth and clean, particularly around the edges.

To obtain best results in removing large branches two cuts should be made—that is, the branch should be sawed off eighteen or twenty inches above the point of its origin to prevent splitting down and tearing off a considerable portion of the bark. After the weight of the branch has been lessened by cutting away the main part a second cut can be made and the stub held in position until the cut is completed. This prevents the splitting down and tearing of the bark which are likely to result from the careless removal of large branches.

The evil results of splitting can be overcome frequently by cutting first on



WRONG AND RIGHT WAY.

the under side of the limb and then upon the upper side, as shown in the second figure, so that the breaking of the tissue occurs near the middle of the wound instead of at one side. When this is the case, tearing and splitting seldom occur.

Farmers' Institutes.

Not the least of the benefits of farmers' institutes is that they are teaching farmers to think when standing on their feet and facing an audience. The old-fashioned farmer felt bungling and awkward in public. He could sit and see holes in the other fellow's argument, but he became speedily a victim of stage fright when he arose to express his own views. — Iowa Homestead.

Burn the Branches.

Never leave prunings of trees and bushes lying round. Burn them in the garden fire, and you will know then that all the insects upon them are destroyed. The wood ash, too, is an excellent fertilizer for every crop grown, but especially useful for tomatoes and all fruits.—Gardening.

The San Jose Louse.

The scale under which the louse hides is impervious to most insecticides, and during a certain season the louse can crawl about or be carried from place to place by birds, heavy winds, etc. Strong, healthy trees soon succumb to the attacks.—Farm Journal.

The Shepherd And His Flock.

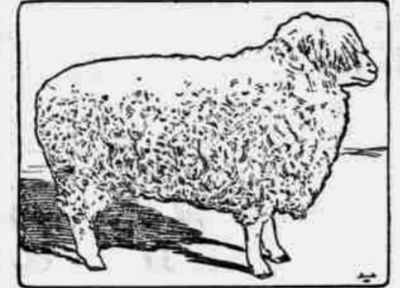
After the first lambs get started a place can be fixed where the mothers and lambs can run together and use the small pens for the new arrivals. This arrangement makes it very convenient for feeding grain and roots to the ewes and in such quantities as they seem to need them, writes a Michigan breeder in American Agriculturist. The best of clover hay should be supplied at this time, and the little lambs soon learn to nibble the heads and leaves, which will help them. If a creep hole is furnished for the lambs to run through into an adjoining stall or room, they will enjoy a play there and can be coaxed to eat some grain, like a little bran and middlings, put in a trough high enough so they can reach it, but not run over it and get dirt in it. As a lamb abhors filth and will not eat if there is any near his feed, the trough should be cleaned at least once a day and a fresh supply furnished. The grain fed the lambs will relieve the ewes to a considerable extent and help to give the lambs a good start in life.

When lambs come during a cold snap, if the ewe and lamb are put in the small pen and a false covering put up just above the sheep's back when she is standing up to keep the cold air from coming on it from above, it will soon warm up and come out all right. If the lamb can be made comfortable until it gets dry, it will not be likely to succumb to the cold.

It is a good plan to partition off some little pens four or five feet square on one side of the shed and as the lambs arrive put the mother and lamb in them, which will prevent the flock running over the little fellows when small. When in the small pen, one can help the lamb to get his first meals, if necessary, much easier than if running in with the flock. If young ewes are inclined to disown their lambs, they are pretty sure to become attached to them after being confined with them a few days. When the ewes have been well fed and the milk starts at the proper time, they enjoy having the udder relieved occasionally, and the maternal feelings seem to assert themselves very readily.

Sheep Are Money Makers.

My experience is that you can carry more sheep, more pounds of sheep, to the acre by 25 to 30 per cent than you



CHAMPION COTSWOLD RAM.

can of any other class of stock—that is, when they are living on the pasture alone, says a writer in American Cultivator. Lots of farmers will have all the cattle and horses on the pasture that the pasture is able to carry, and then they will put on a flock of twenty-five or thirty ewes and lambs, and of course these sheep are going to eat close.

Sheep naturally do bite close, and the cattle will have the pasture in such a condition that the sheep are compelled to bite close, and then, of course, you will have a short pasture. But if you will take twenty acres and put cattle on ten acres of it and stock the other ten acres with sheep and stock both fields up to their full limit you will find that you can carry from 25 to 30 per cent more live weight of sheep on the ten acres than you will cattle. I have proved that several times, and I think any sheep man who has tried it will bear me out.

Another advantage is that they will eat down the weeds that are a nuisance to this country. Although they do not destroy the weeds entirely, they prevent them from going to seed. You can never see any burdocks growing in a field where there is a flock of sheep, and other weeds are destroyed, and that is a considerable advantage in favor of the sheep. Then the sheep are valuable in manuring the field, which will not be done so thoroughly by any other class of stock.

The illustration shows the champion Cotswold ram at the recent International Live Stock exposition.

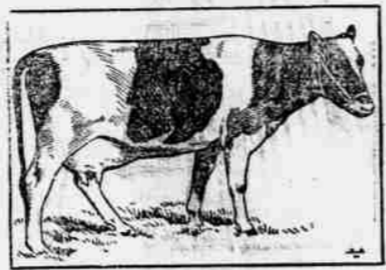
Weighing the Live Stock.

It is a common thing nowadays to find platform scales on the farm. A few years ago only those men who fed stock extensively or bought a great deal of grain had them. On many a farm now the scale is not used as much as it should be. It makes no difference whether you are feeding beef or hogs, you ought to use your farm scale. Have it arranged so that it is not difficult to run the stock over it. Then weigh up the individuals regularly, so that you can find out the effect of your feeding. If your hogs are getting a good feed of grain and milk and make slight gains, the scales will tell you that. If the young stock are not increasing as they should, the scale will do another bit of detective work. The importance of all these things can hardly be estimated. It is folly to continue to feed thirty cent corn to hogs or cattle when it is not giving you the best returns in growth. It is entirely possible that less corn fed differently would do better. Think about this, says Kimball's Dairy Farmer, and see if there is not a great deal of truth in it.

THE DAILY

I think if all milkers would take a little trouble to do a little thinking, a little sound reasoning and investigate matters a little they would probably find that sore teats is a common cause for a kicking cow, especially so with young cows, and instead of using the much talked of straps or ropes buckled around the body I should advise them to use our remedy (which has proved successful without a single exception), and that is simply clean lard, writes a dairyman in Iowa Homestead.

About fifteen or twenty minutes before the cow is milked the first time the lard should be applied to the teats, and when through milking wipe the teats perfectly dry with a dry soft cloth and apply the lard again. This was usually found necessary for about five or six milkings. Many milkers



KATY GERBEN.

have the bad habit of wetting their fingers when milking, and when the teats of young cows are left in this condition, especially in the winter time, they get sore, while hard heels or takes away the soreness that is so natural, considering that many milkers have tough, hard hands and considering that the teats are not accustomed to the milking process.

A Holstein's Great Record.

The Nebraska Agricultural college reports the work of the Holstein Katy Gerben, which has lately made a new yearly record of milk production over any cow of any breed classed as a three-year-old. She was culled Dec. 7, 1902, and dropped her first calf Dec. 20, 1904. In ten months she produced 335.45 pounds of butter. She came fresh again Jan. 13, 1906, and in 305 days produced 723.85 pounds of butter. She gained during the year 128 pounds in live weight. Katy is now four years and two months old and has to her credit one two-year-old heifer, which has been fresh three months and is producing ten pounds of butter per week; also another yearling heifer, which will be fresh in August, 1907. Katy has produced in two years 29,541 pounds of milk and 1,119.3 pounds of butter. Katy Gerben's net earnings last year were \$156.17, the total food cost being \$71.43, while the value of whole and skim milk produced was \$227.60.

Mix Thoroughly.

A great many people make mistakes in attempting to test a cow for butter fat. I have been connected with a cooperative creamery all my life, and we used to have a great many complaints about the test. People complained the creamery did not give them as good tests as they should have had; that their cows tested more. When you follow these complaints, you will find in nearly every instance they come from the fact that the farmer does not take a correct sample of milk to take the test from. When you milk a cow, as soon as you are through, if you take a small dipper and a sample of milk from the top of the pail, that milk is richer than from the bottom of the pail, because the cream has been gradually rising from the time you began to milk until you got through. A man doing that must not expect that his test will correspond with the test of the creamery. He should have two pails when he gets through milking. Pour the milk from one pail to another, back and forth, holding it as high as possible; then take a sample at once. By doing that you will get a fairly accurate sample.—Colon C. Little.

Best Cows Are Cheapest.

The high priced cow is not so expensive as she seems in view of what she produces. The average cow produces milk or butter to the value of \$52.50, and she costs \$51 a year, reckoning that the manure she produces offsets the care of her. This shows that the cow does not do a great deal toward raising the mortgage on the farm. Assuming that it costs no more to keep a good cow than a poor one, the figures will show that the good cow is relatively cheaper. The average cow will produce 5,000 pounds of milk a year, while a choice cow will produce as high as 10,000, meaning a profit of \$225, against the almost even balance sheet of the average cow, while Pieterje II, a Holstein, has a record of 30,000 pounds of milk a year, which would make a profit of \$1,050.—Professor F. S. Cooley, Hampshire County, Mass.

The Head of the Herd.

The selection of an animal to head the herd is a matter of the greatest importance. To the professional breeder who has made his herd and knows the strong and weak points of his animals we give no advice. A man who has sufficient skill to breed a herd of females to uniformity knows better than any one else their weakness which he wishes to correct. He also knows how to select a mate for them which is strong where they are weak, but he has to take the chances of that mate transmitting the desired improvement without interfering with the good qualities already prevailing in the herd.

SEA SUPERSTITIONS.

Signs and Tokens That Sway the Men Who Work Aboard Ship.

There is a general idea that the sailor labors under more than the one superstition popular tradition assigns to each individual. Mr. J. D. J. Kelley, although he declares that "tars" are no more superstitious than any of their equals in training and opportunities, cites in "The Ship's Company" many of the signs and tokens in which those "who go down to the sea in ships" put their faith.

In the past superstition was a part of every ship. It entered into its keel, climbed to its flags, ran at its launching, controlled its crew and cargo, evoked portents and governed its ventures and arrivals.

A bit of stolen wood was always mortised into the keel to make a ship sail fast. A silver coin was placed in the mainmast step to insure lucky ventures. The modern christening by the wine bottle arose from the ancient libations poured on the deck by priests.

On a sailing ship lawyers, women and the clergy are looked upon with disfavor, as they are supposed to bring ill luck. Every black cat that comes on board "carries a gale in her tail." Whistling is much against the prophecies of sea life. If one whistles for a breeze he is only too apt to bring a tornado.

Ship bells are blessed, and to this day, if a mistake is made in striking one, it is immediately struck backward to break the spell. The belief in the desertion of a sinking ship by rats is founded on reason, for rats like to be dry footed, and when a vessel is unsafe it becomes leaky under deck and too wet for the creatures' comfort.

Figureheads were first images of gods, then of saints and sea heroes. Chinese junks bear two glaring eyes on their bows, for: "No have two eyes, how can see? No see, how can go?"

Caustic Judge Hawkins.

Judge Hawkins once had to sentence an old swindler and gave him seven years. The man in the dock squirmed and whined, "Oh, my Lord, I'll never live half the time!" Hawkins took another look at him and answered, "I don't think it is at all desirable that you should."

The formality of asking a newly convicted prisoner if he had anything to say why sentence should not be passed upon him brought another characteristic retort from the judge. A prisoner in these circumstances usually either says nothing or curses at large in his rage, but one of them struck a theatrical posture and with his right hand in the air shouted: "May the Almighty strike me dead if I don't speak the truth! I am innocent of this crime!" Judge Hawkins said nothing for about a minute, when, after glancing at the clock, he culminated in his most impressive tones, "Since the Almighty has not thought fit to intervene, I will now proceed to pass sentence."—Westminster Gazette.

A Neglected Shoe.

"I was telling a friend of mine the other day," said the broker, "about a fellow I know of who lost one of his hands when he was a boy. He is quite a bit of a 'dandy' and visits a manicure regularly twice a week. Every new place he goes into he has a terrible scrap with the proprietor trying to get half rates."

"I have always considered the joke a pretty good one, but the friend I was telling it to went me one better. He came back at me with the story of a chap who has only one leg and never gets but one of his shoes shined. He wears a cork leg, and beyond a slight limp no one would ever know of his affliction. It is a mystery to all his friends why he never has the shoe on the artificial foot polished."—New York Globe.

No Growing Pains.

An eminent specialist claims that there is no such thing as "growing pains." We have been taught that when a child has stinging pains in the limbs, shoulders or other parts of the body it is an indication that the body is growing, and therefore most parents welcome the news of such suffering in children. The physician referred to above claims that growing pains are muscular rheumatism and should have immediate attention. Something is wrong, and steps should be taken at once to learn why the child's blood is not in perfect condition.—Health.

He Knew.

She was a Sunday school teacher, and of course she tried to make everything good. She spied a lot of urchins going bathing one Sunday afternoon, and so she tackled them. "Do you know where little boys go to who bathe on Sunday?" said she. "Yes," said one little arab, blacker than all the rest. "It's farther up the canal side. But you can't go. Girls ain't allowed."—Strand Magazine.

GODPARENTS.

Origin of the Custom of Having Sponsors at Baptism.

The names of godfather and godmother are from the Anglo-Saxon, and they are applied to those who act and speak for a child in the rite of Christian baptism. The Latin name for the same office—sponsor—having been incorporated in the English language, is even more often used than the Saxon appellatives. It signifies a bondsman or surety.

The first appointment of sponsors in the early church occurred about 154 A. D., and the selection was the act of a Roman bishop, whose object was to provide for the Christian upbringing of a child, both of whose parents had perished in persecution. From that time on the custom of having sponsors at the baptism of children grew on the plea that their parents might be cut off by some fierce attack on the small company of Christian believers, until it came to be retained after the period of persecution as a part of the baptismal rite.

A rule adopted by a church council in 813 A. D., forbidding parents to act as sponsors for a child is supposed to have for its purpose the securing for a child a Christian guardian should one or both of the parents die, for it was held that the parents were, per se, the child's natural sponsors and bound, by their very act of bringing him to the baptismal font, to rear him in the faith.

Another church rule adopted by the council of Trent in 1545, limiting the number of sponsors to two for each child, is said to have owed its origin to the fact that the choice of sponsors had come to be made largely to secure gifts and favors, a dozen or more friends, present or absent, being recorded as sponsors in many instances, a custom that simply converted the office into a farce.

The duties of a sponsor as defined in the church catechism are to pledge the child to—first, a renunciation of the evil works of the world, the flesh and the devil; second, belief in the Christian faith, and, third, to a life lived in accordance with God's holy will and commandments. An active interest in the child's Christian welfare was at one time expected of its godparents, but little is looked for now beyond a kindly interest, more or less perfunctory, in his (or her) well being.—Housekeeper.

Secret of Happiness.

We each of us possess within ourselves the true source of happiness. Enjoyment is contained in our imagination, not in the book we read; in our appreciation of beauty, not in the picture; our musical culture, not in the instrument played. Our enjoyment of nature does not depend upon the charm of our surroundings, but upon ourselves. Some men will find more joy in the prairie than others in the Alps; some more joy in the desert than others in the flowers and forests of fertile lands. Is it the rich, the powerful, the popular that obtain the greatest happiness? We look about us and we know that this is not true, though we act as if it were. Blessed are the poor in spirit. This we know is true, though we act as if it were not. No one is truly happy who has not happiness as a well of water springing up within himself into everlasting life.

Answers.

Two young society women were in an outboard Sutter street car. It stopped at Leavenworth.

"Oh, there come Tom and Ed! I guess they've had luncheon at the Palace. They've got on the front end. I don't want to speak to Ed. What can I do if he should come back this way?"

"Hyde!" shouted the conductor as the car sped along.

"What's the matter? Don't you like him any more?"

"I never did, but I expected he'd ask me to the auto show, and he pretended he wasn't going, and I just knew he'd be there. What do you suppose he was doing by his lonesome?"

"Larkin!" yelled the conductor, loud above the down grade whirr of wheels.—San Francisco Chronicle.

Heating Water in a Paper Bag.

"I had no hot water for shaving at the little country hotel and accordingly heated some in a paper bag."

"Heated water in a paper bag?"

"Sure!"

"How can that be done?"

"You take a stout paper bag—or an envelope will do as well—fill it with water and hold it over a gas flame or a lamp. The water heats readily. The paper doesn't burn because it is wet, and wet paper is a singularly tough and noncombustible substance."

"Many and many a time have I heated over the gas jet an envelope or a paper bag of hot water for my shaving, and not once have I had an accident!"

Additional Local.

W. R. Hall of Buena Vista was an over Sunday visitor in Corvallis.

Mrs. J. W. Howard and son Joe have been visiting Dallas friends the past few days.

Rev. and Mrs. T. S. Handsaker returned Friday from a brief visit to Forest Grove.

Roy Clark of OAC returned Sunday from a two days' visit with his parents in Portland.

F. S. True has been confined to his bed the past few days with illness, but is slowly improving.

President Gatch and Professor Horner of OAC spent Sunday at Newport, returning yesterday.

R. L. Smith and T. C. Sparkman will sell real estate under the name of "The Santiam Land Co.," with office at Lebanon. 48tf

Born, May 6, 1907, to Don C. Ray and wife of Grass Valley, California, a daughter. Don will be remembered as an old OAC boy.

Mrs. Sleeth, state organizer of the W. C. T. U., left Saturday for Bellefontaine to organize a society there, if possible, and get the ladies interested in W. C. T. U. work.

With John Rodgers, Mary Slocum, Jeremiah Snowgrass, Jim Cummings, Sue Rodgers, The Benton County Sheriff, and all the rest of the fun making characters to entertain, you will laugh and you will cry, at the opera house on Wednesday night.

The W. H. M. S. of the Methodist church served a luncheon in the church basement all yesterday afternoon and evening, to raise funds for their work. Sauswiches and coffee, cake and ice cream were the items of interest on the menu, and several dollars were taken in by the workers.

There will be a union Christian Endeavor "Seattle Rally" at the Congregational church, Thursday evening at 8 o'clock. The meeting will be addressed by Rev. D. A. Thompson of Portland. Special musical selections will be featured and a reception will follow the program. It is hoped every Endeavorer will be present, and all friends of the cause are cordially invited to be present and help make the evening a rousing success.

The OAC baseball nine returned Sunday from Eugene, where they were defeated Saturday afternoon by the U. of O. nine in a score of 9 to 3. The field at Eugene was in very bad shape for playing, and the OAC men feel confident that in the return game which will be played in this city in the course of a couple of weeks they will make a far different showing. Those who played the game for OAC, Saturday, were: Pitcher, Looney; catcher, Wolfe; 1st base, Beatty; 2nd base, Swann; 3rd base, Jones (captain); short stop, Kruse; left field, Bilyeu; center field, Moore; right field, Todd; Sals, Murray and Pendergrass. M. M. Long of this city officiated as umpire, and Coach McReynolds of course accompanied his men on the trip.

Albany has taken up the matter of cleaning up and beautifying the cemetery at that place, and the example is one that should be followed by Corvallis and a good many other towns throughout the Valley. The citizens of that city are to engage a man to clean the cemetery thoroughly and that is what is needed in our own Crystal Lake and other silent cities. To have the poison oak and other weeds and grass mowed down in our cemeteries several times during the coming summer would be but a small item of expense, and that it should by all means be done just before Memorial day cannot be denied. A little exhibition of public spirit along this line would certainly be appreciated generally, to say nothing of showing more respect for those who are sleeping in these neglected grounds.

THE SHEPHERD

If the ewe's udder is caked, foment it with hot water containing a slight infusion of opium.

There's nothing like mother's milk for the lamb, but when the mother is short the milk of a "fresh" cow is the next best thing.

Save some of the best ewe lambs for your own flock. Those from good, twin bearing stock are best.

Keep the sheep pens dry with plenty of litter. Put in fresh, clean straw often. Keep the pens level. Rake them over if they become tramped and unevenly packed, says the Farm Journal.

Do not allow the wool to become damp. It takes a long time to dry and may cause colds and pneumonia.

The success with the early lambs depends upon the capacity of the mothers to supply milk. To insure this they must be fed on the proper variety of food.

The only safe place for newborn lambs is where the cold cannot chill them. After they are a few days old they will endure almost as much as the old sheep. It is wonderful how fast they grow sturdy and able to resist the cold.

A sprinkling of oilmeal is a good aid to digestion.

Quietness is best for the ewe that has just lambed.

The most profitable flock is one where no ewes are kept that are over six years old unless there may be some wonderfully prolific ewes and some that are extra good.