

LOCAL AND PERSONAL

Merry Christmas!

Take THE GAZETTE for all the local news.

President Gatch goes to Newport this week for his annual holiday outing.

Mrs. N. C. Brown left Saturday for Dallas to spend Christmas with friends.

County Assessor Davis arrived home Thursday evening from a few days visit with Eugene friends.

Mrs. D. D. Berman and daughter, Miss Ethel, went to Albany Thursday for a visit with friends.

Claud Gatch and family, of Salem, are spending Christmas with President Gatch and family, in this city.

Mrs. Nancy Beal, of Portland, is the guest of Mr. and Mrs. E. W. Strong over Christmas. She arrived Friday.

Ben Jones passed through Corvallis Friday enroute to his home at Toledo, from a business trip to Portland.

Alva Miner and family left Wednesday for Crabtree, Linn county, for a two week's visit with Mrs. Miner's parents.

Mrs. T. T. Vincent left Friday for a two week's visit with her daughter, Mrs. Ida Mathany, at Centralia, Wash.

Among out-of-town Christmas shoppers on Corvallis streets Friday were noticed ex-Asst. Howard, Tom Read and Hollis King and family, all of Kings Valley.

Con Gerhaid has been confined to his home with illness the past week. The store has been in the hands of Misses Mae and Kate Gerhaid.

The transcript on appeal in the case of the State versus Mike Kline, was sent to the supreme court at Salem by County Clerk Moses, Friday.

Ralph Vincent and family were in Corvallis, Friday, on their way to Washington county to spend the holidays with Mrs. Vincent's relatives.

Miss Mattie Strong who is attending St. Mary Academy, came up from Portland Friday night for a holiday visit at the home of her parents, Mr. and Mrs. E. W. Strong.

Mrs. Julia Paul arrived in Corvallis from Portland, Thursday, to spend the holidays with relatives. Her husband, Prof. G. Lester Paul, who is teaching in the Western Academy of Music, Portland, was expected to arrive a day or two later.

Henry Ambler has been heard from as a chicken fancier the past week. In the Albany poultry show he exhibited some of his favorite birds, the Golden Wyandottes, and carried off first prize on cockerel and second on pullet. Mr. Ambler expects to engage in fancy poultry raising to a considerable extent.

The latest real estate transfers filed for record are: Evan McLennon to Ella Taylor, 1-2 lots Co. add., \$1; W. A. Wells and wife to Robt. J. Watts, 2 lots Avery & Beach's add., \$600; Mary C. Bryson to Emily C. Pernot, 2 1/2 lots, Co. add., \$925; H. A. Cleek and wife to Adolph Leader, 4 lots, Avery and Well's add., \$189.

The Christmas vacation began for the public school teachers and scholars at the close of the Xmas exercises Friday afternoon. In various rooms of the public school building there were elaborate decorations, and programs of recitations, songs and readings were given by the pupils. There were many friends, parents and visiting children present to listen to the exercises, and the afternoon was a happy one for all concerned.

The law plainly states that all jurors and witnesses before the circuit court must go before the county clerk between the time of adjournment of the circuit court and the next session of the county court and put in their time bill. If this is not done said jurors and witnesses will not receive any compensation for their attendance at the circuit court. Clerk Moses desires that those who were in attendance at the last session of the circuit court give attention to this matter.

The machinery is now daily expected to arrive from Portland for the saw mills on Beayer creek, recently purchased by G. W. Gove, a recent arrival from Washington. This was formerly the Gleason mill, and Mr. Gove and sons will refurnish the plant and operate a large mill there. The Goves purchased 570 acres of land in the vicinity, and have demonstrated their intentions to remain and engage extensively in business in Benton.

W. A. Brown and wife, of Halsey, were Corvallis visitors Friday.

Fred, Bert and Wilbur Croft are spending Christmas with their sister at Shedd.

Kigneur Buick, an OAC student, is visiting friends in Linn county during the holidays.

Miss Mary Elgin is the guest of Miss Margaret McCormick, at Lebanon. She will remain over the holidays.

Walter Hubbard, of Dallas, and Mrs. Ed De Armond of Suver are over-Christmas guests of Mrs. C. E. Cummings.

Mrs. William Robinett, of Halsey, returned home Saturday, after a visit at the home of her sister, Mrs. B. A. Cathey.

Merwin McMains went over to Toledo, Friday. He expects to hold a case in the office of the Lincoln County Leader.

During the holidays when looking for amusement be sure to remember the "Missouri Girl" on Wednesday evening.

C. B. King and family, who are visiting here from Couer'd Alene, Idaho, visited relatives at Toledo the last of the week. They return home shortly after the holidays.

A freight car got wrecked Friday evening on the East Side near Oregon City and passengers and mail for Corvallis, due on the regular 8 o'clock train from Albany did not arrive until about 12 o'clock (midnight).

A true story of the simple people who inhabit that part of Missouri where the Ozark mountains rear their wooded heads, is that of the "Missouri Girl," appearing at the Opera House Wednesday evening.

In order to fittingly observe Christmas Day we went to press Saturday evening. Monday (Christmas) was our regular press day and we were obliged to ante-date the paper in order to get our holiday. We think ourselves entitled to one day in the year, at any rate we hope all our readers such a merry time of it that they will not be critical about this issue.

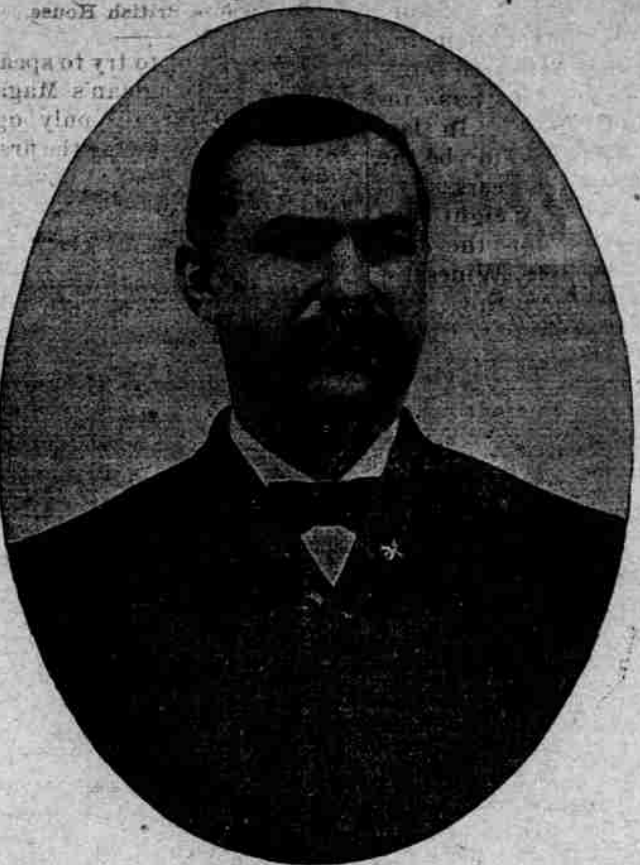
We are informed that in various sections of the county there is a tendency to enter into walnut culture. The prevailing opinion is that English walnuts will do splendidly in this section and many hundreds of trees will have been planted before another year rolls around. Should the culture of this crop prove profitable it will be a big thing for Benton county.

Thomas Horning and family were in Corvallis the last of the week on their way home to Toledo. They had been to Portland to bring home the daughter, Miss Maud, who for many weeks has been under treatment in a hospital. The young lady underwent an operation for a diseased condition of the bone of one limb, and it will be many weeks before she will be able to walk.

In spite of the fact that a series of fairs had already been given this month by the various churches in the city, the Methodist sale at Farmer's hotel Tuesday, concluding with a chicken pie supper from 5 to 9 p. m. Wednesday was well patronized, and in every respect a success. The young girls of the Intermediate League sold home-made candies, and from this source, the sale of articles and the supper, the total receipts amounted to something over \$100.

There is probably no place of business in Corvallis that is more rushed just now than the commission house of Smith & Boulden. From Monday until Friday of last week the shipments by this firm ran as follows: Chickens, 420, amounting to 1825 pounds; turkeys, 300, weight 3300 pounds; geese, 111, weight, 944 pounds; hogs, 10, weight, 1075 pounds; veal 3, weight 276 pounds. Total weight of shipments 8421 pounds, representing about \$700 in cash. Two day loads left the establishment Tuesday, two on Wednesday and two on Thursday.

Among those from the East who recently settled in Benton as a direct result of advertising done by the Citizens' League, is Ralph Nelson, who is well pleased with Benton and his new residence. He is from North Dakota, and 16 other families are in communication with Mr. Nelson, with a view to locating in this section. A fact of interest in connection with the work of the League is that \$200,000 has been brought into Benton since last spring, as a direct result of about 25 small advertisements carried during the summer in eastern newspapers. This sum represents the capital invested in Benton real estate and deposited in Benton banks by these homeseekers who state their attention was directed to Benton through the medium of advertising matter. The ads. cost the League about \$150.



We wish you all a Merry Christmas

S. L. KLINE

Proprietor

The People's Store

Established 1864

Corvallis, Oregon

ANNOUNCEMENT
Our 36th Annual Clearance Sale begins Tuesday, December 26, and as usual, will continue for 30 days, during which time we will sell without reserve every article in the store. Prices will appear in the next issue of this paper.

Watch for it. Wait for it.

S. L. KLINE, The People's Store.

CORVALLIS, ORE.
Established 1864

AS USUAL, MAIL ORDERS WILL CONTINUE TO HAVE OUR PROMPT ATTENTION

The Pianola Piano
A Piano That Will Give You Ten Times More Actual Pleasure Than Any Piano You Have Ever Owned.

There are two accepted ways of playing the piano today:
1. By hand.
2. By the Pianola.
Both of these methods are united in the Pianola. You can turn from one method to the other INSTANTANEOUSLY. The Pianola is built into the piano itself, so that there is nothing to move up to or away from the keyboard. Both piano and Pianola are just as effective as though in separate instruments.
Never has a piano been presented to the public which has met with such a remarkable and enthusiastic reception as the Pianola Piano. Its great success was to be expected, for it represents the logical development of the piano. It enables everyone to obtain from a piano ALL the musical enjoyment the instrument is capable of. In the light of this important improvement in piano construction, all previous pianos seem incomplete. Hence the Pianola Piano has become universally known as "The First Complete Piano."
Pianos of all makes taken in exchange for the Pianola Piano. Grands and uprights in excellent condition and bearing the names of the highest grade manufacturers, are every day being received in part payment. That people everywhere should part with instruments which they have hitherto valued highly, is impressive evidence of the position that the Pianola Piano has attained among music lovers. It is THE piano of the day.
If you have a piano from which you derive comparatively little musical enjoyment why not exchange it for this new type of piano, which will be a daily source of pleasure for every member of the family? Write for terms on which such exchange will be made.
Pianola Pianos are sold only by Eilers Piano House, Portland, Ore., and through its many stores and representatives.
The people of this vicinity will undoubtedly be pleased to know that any further information concerning the Pianola Piano, Pianos, Organs, etc., can be obtained from Professor Taillander, director of the piano department of Corvallis Agricultural College, and can be seen at his residence on College Hill on Saturday and every evening of the week. A telephone call will bring him to your house, Ind. 185.

Eilers Piano House, Special Representative

Our Big Stock Reducing Cash Sale is Still On

The first day's sales weighed in cash just ten pounds, and every customer went out of our store more than pleased with their bargains.

Our ladies', misses' and children's shoes ranging in price from \$1.40 to \$4 that have not only been going out in pairs, but in half dozen lots, at

96 cents the pair
are the talk of the town.

Come early; you can't avoid the rush, but you can come before your sizes are all gone.

Every bolt of goods in the domestic department has been given 15 day's notice to get out of the store at prices that is doing the business.

Everything in the house reduced (excepting groceries) for cash.

F. L. Miller